

NTN-BCA® Adapter Bearings Intro

NTN-BCA® 200 & 300 Series Adapter & Hex Bore Bearings

NTN-BCA®'s wide, narrow, and setscrew adapter, and hex bore bearings incorporate VANGUARD® seals and one-piece molded retainers as standard features. All VANGUARD® seal designs consist of nitrile rubber which is bonded during the molding process to a heavy gauge steel trash guard. The molded seal lips offer the maximum potential for consistency and accuracy insuring the highest level of sealing effectiveness. Each seal lip contacts the precision ground inner ring land which is manufactured to very restrictive surface finish and size requirements. This ensures that the seal lip interference is correctly maintained at the interface with the inner ring while eliminating any potential for lip wear and abrasion.

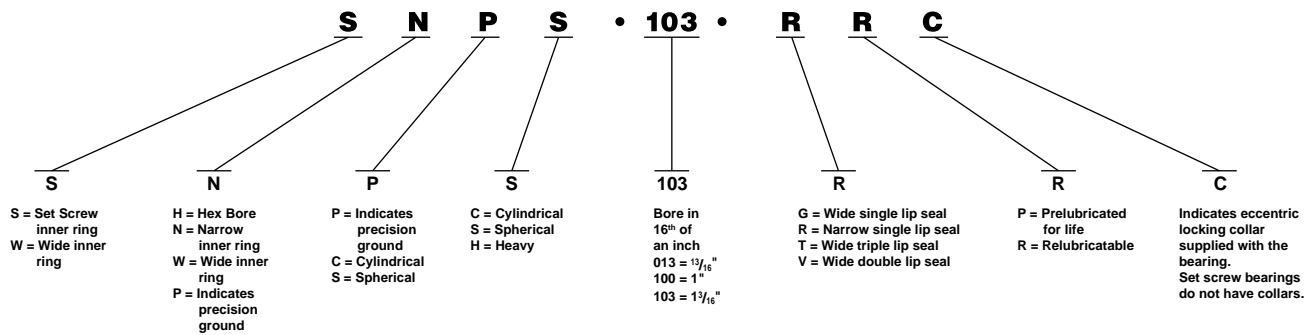
The one-piece molded nylon retainer is a component that outperforms conventional retainers by significant margins. Due to the flexibility of this material, retainers molded from nylon are able to accommodate misalignment in a wide range of agricultural and industrial applications.

The recently introduced heavy series incorporates many unique features to provide superior performance in a wide range of industrial applications. Completely developed with maximized components, the heavy series (based on the 300 series Conrad bearing) is capable of high speed and high tem-

perature service in virtually any environment. Assembled with low drag P.T.F.E. seals, two piece riveted steel retainer, and prefilled with a high temperature, long life lubricant, this series offers the economics of a universal design within a compact integral package. Testing has proven this seal construction surpasses the sealing effectiveness of clamped style rubber seals and exceeds by a wide margin non-contact seal configurations. The highest quality materials coupled with advanced manufacturing capability insures that the precision requirements of each component are met permitting continuous high speed service without excessive vibration. Cylindrical outer rings and non-sealed bearings are available upon request.

Adapter bearing rings and balls are manufactured from the highest quality bearing materials available. Stringent processes and controls insure that components are always produced to the necessary requirements for long term satisfactory performance of the finished assembly. The completed product has been designed from the ground up to provide superior maintenance-free operation, but is also available with provisions for relubrication should that option be a requirement. Extensive testing and many years of successful field performance have proven that NTN-BCA® Adapter Bearings are more than equal to the task in demanding industrial and agricultural applications.

Adapter Bearing Numbering System



NPC & NPS Type — Pre-lubricated Extended Inner Ring

NTN-BCA® narrow series locking collar bearings have an inner ring that extends on the locking side and is flush on the opposite side. This design offers a cost effective option for light to medium load applications and is particularly well suited to situations in which limited space is available. Designed for shaft mounting using a "slip fit", to achieve optimum performance the shaft diameter should be maintained with .001" of the normal size. NP series bearings are typically supplied with an eccentric locking collar. All bearings and collars conform to the standards for this product as established by ANSI/ABMA standard 15.

For additional information on the Vanguard® Seals featured on these bearings, refer to the Engineering Information Section 9.3 — Seals for Ag and Other Harsh Environment Bearings.

WPC Type — Wide Inner Ring Cylindrical Outer Ring, Pre-lubricated

NTN-BCA® wide series bearings are manufactured with an inner ring that extends equally on both sides of the bearing. The additional shaft support afforded by the wider ring promotes exceptional performance in more heavily loaded and higher speed applications. The extra width also permits the use of seals that extend past the outer ring face resulting in a larger internal cavity for a greater initial pack of lubricant. WP series are supplied with a mating eccentric locking collar. All bearings and collars in this series conform to the standards for this product as published in ANSI/ABMA standard 15.

Note that the term "Cylindrical" as it applies to these WPC bearings refers to the outer surface of the outer ring, which is flat, thus creating a cylindrical outer ring profile, making these bear-

NTN-BCA® Adapter Bearings Intro

ings most appropriate in mounting situations where the shaft is truly perpendicular to the bearing housing. (In mounting situations where the shaft may not necessarily be perpendicular to the bearing housing, refer to the WPS bearing section of this catalog, which features similar bearings having a spherical outer ring profile.)

For additional information on the Vanguard® Seals featured on these bearings, refer to the Engineering Information Section 9.3 — Seals for Ag and Other Harsh Environment Bearings.

WPS Type — Wide Inner Ring Spherical Outer Ring, Pre-lubricated

NTN-BCA® wide series bearings are manufactured with an inner ring that extends equally on both sides of the bearing. The additional shaft support afforded by the wider ring promotes exceptional performance in more heavily loaded and higher speed applications. The extra width also permits the use of seals that extend past the outer ring face resulting in a larger internal cavity for a greater initial pack of lubricant. WP series are supplied with a mating eccentric locking collar. All bearings and collars in this series conform to the standards for this product as published in ANSI/ABMA standard 15.

Note that the term “Spherical” as it applies to these WPS bearings refers to the outer surface of the outer ring, which has a convex curvature, thus creating a spherical outer ring profile, making these bearings most appropriate in mounting situations where the shaft may not necessarily be perpendicular to the bearing housing. (In mounting situations where the shaft is truly perpendicular to the bearing housing, refer to the WPC bearing section of this catalog, which features similar bearings having a cylindrical outer ring profile.)

For additional information on the Vanguard® Seals featured on these bearings, refer to the Engineering Information Section 9.3 — Seals for Ag and Other Harsh Environment Bearings.

WPSH Type — Heavy Series Wide Inner Ring

NTN-BCA® wide heavy series bearing are manufactured with an inner ring that extends equally on both sides. This provides additional shaft support for exceptional performance in more heavily loaded and high speed applications. The extra inner ring width also permits the use of advanced technology P.T.F.E. seal designs. This seal material exhibits superior performance in hostile environments, when exposed to extremes of temperature, and in high speed rotational service. Complemented with a high temperature, moisture resistant lubricant and two-piece riveted steel retainer, the WPSH series is suitable for use in a wide spectrum of applications.

The WPSH wide inner ring heavy series is based upon the 300 series Conrad bearing. This insures dynamic and static capacity levels that are compatible with the demands of rigorous industrial applications. All sizes are available in sealed and open configurations with spherical outer rings or assembled in an aligning ring as a replacement for popular oil lubricated fixed and floating units. Cylindrical sealed and open designs are available upon request.

WPSH-AC Series Heavy Series — Wide Inner Ring With External Aligning Ring

NTN-BCA® heavy series with external aligning ring consists of the high temperature high speed heavy series bearing and a precision external ring that permits initial bearing alignment and assembly of the bearing unit into a cylindrical housing bore. Because this external aligning ring is specially ground and closely fitted to each bearing outer ring, it will not fit interchangeably with another bearing. Through use of properly designed and dimensioned housing components, the WPSH-AC bearing is able to float axially to accommodate thermal shaft expansion or contraction. Primarily selected as a replacement bearing for PWOL series cast iron assemblies, and equivalent competitive units, the WPSH-AC aligning ring bearing assembly offers a precision high performance option for the most rigorous of applications.

HP Type — Hex Bore Cylindrical Outer Ring, Pre-lubricated

Hex bore adapter bearings are a popular selection in moderately loaded, low speed applications for agricultural equipment. Commercial hex shafting is used to simplify bearing installation and eliminates the need for a locking device on the bearing. Locating the bearing axially on the shaft is accomplished by spacing components adjacent to the bearing.

Like the WPC Type bearings (which see), the Cylindrical versions of these bearings feature an outer ring with a cylindrical profile, making them especially appropriate in mounting situations where the shaft is truly perpendicular to the bearing housing. The Spherical versions of these bearings, like the WPS Type bearings (which see), feature an outer ring with a spherical profile, making them especially appropriate in mounting situations where the shaft may not necessarily be perpendicular to the bearing housing.

For additional information on the Vanguard® Seals featured on these bearings, refer to the Engineering Information Section 9.3 — Seals for Ag and Other Harsh Environment Bearings.

SNP Type — Narrow Set Screw Adapter Bearings

NTN-BCA®'s narrow inner ring set screw bearings are primarily intended for use in power transmission housings. They have spherical outer ring ODs, and are manufactured with a grease groove and hole, permitting re-lubrication when necessary. The inner ring is equipped with two set screws which provide a simple positive system for securing the inner ring to the shaft. This compact design offers an economical option for light to moderate duty service. The two positive contact land riding Vanguard® Seals afford excellent protection for the internal surfaces and permit use of these bearings in moderately hostile environments. Each ring and rolling element is precision finished to exacting tolerances to enhance performance and minimize noise and vibration.

NTN-BCA[®] Adapter Bearings Intro

Limiting Rotational Speeds Limiting Speeds For Seals On Adapter Bearings

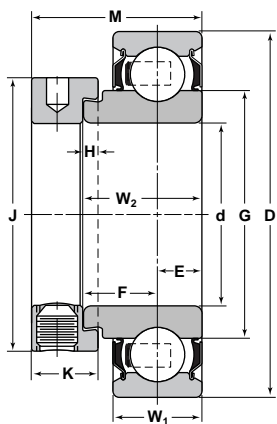
The following table highlights the limiting speed factor in RPMs for seals on narrow, wide and hex bore adapter bearings by bore size:

Adapter Bearing Bore Size	Outer Ring Series	Single Lip Seal	Double Lip Seal	Triple Lip Seal
inches			lbs	
$\frac{1}{2} - \frac{5}{8}$	203	5000	—	—
$\frac{3}{4} - \frac{7}{8}$	204	4000	4000	—
$1\frac{5}{16} - 1\frac{1}{8}$	205	3000	2250	1500
$1\frac{3}{16} - 1\frac{5}{16}$	206	2500	1750	1000
$1\frac{3}{8} - 1\frac{1}{2}$	207	2250	1500	900
$1\frac{9}{16} - 1\frac{5}{8}$	208	2250	1500	900
$1\frac{11}{16} - 1\frac{7}{8}$	209	2000	1100	600
$1\frac{15}{16} - 2$	210	2000	1000	500
$2\frac{3}{16} - 2\frac{1}{4}$	211	1800	800	400
$2\frac{7}{16}$	212	1800	600	200

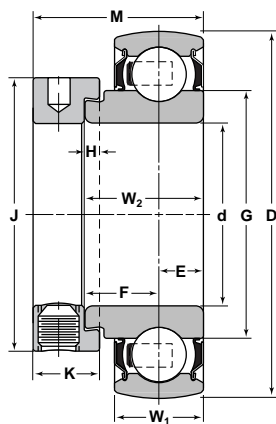
It is also important to note that the limiting temperature for adapter bearing seals is 200°F. Exceeding this temperature will cause grease breakdown and premature failure.



NPC & NPS Type—Pre-lubricated Extended Inner Ring

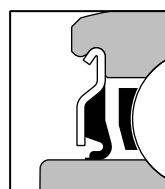


CYLINDRICAL O.D.

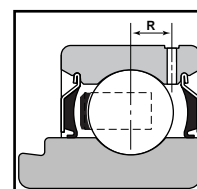


SPHERICAL O.D.

VANGUARD® "R" SEAL SINGLE LIP



RELUBE DIMENSION

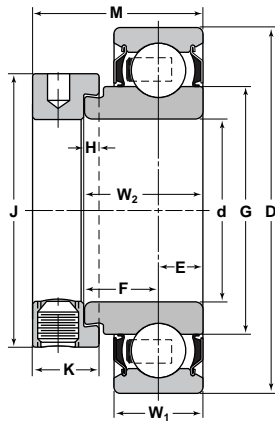


Bearing Number ❶		Basic Outer Ring	Bore d	Outside Diameter D	Ring Widths		E
Cylindrical Outside Diameter	Spherical Outside Diameter				Inner W ₂	Outer W ₁	
Inch/mm							
NPC-008-RPC	NPS-008-RPC	203	1/2	1.5748 40	.7500	.5118 13	.2559
§ NPC-009-RPC	§ NPS-009-RPC	203	9/16	1.5748 40	.7500	.5118 13	.2559
NPC-010-RPC	NPS-010-RPC	203	5/8	1.5748 40	.7500	.5118 13	.2559
NPC-012-RPC	NPS-012-RPC	204	3/4	1.8504 47	.8437	.5906 15	.2953
§ NPC-013-RPC	§ NPS-013-RPS	205	13/16	2.0472 52	.8437	.5906 15	.2953
NPC-014-RPC	NPS-014-RPS	205	7/8	2.0472 52	.8437	.5906 15	.2953
NPC-015-RPC	NPS-015-RPC	205	15/16	2.0472 52	.8437	.5906 15	.2953
NPC-100-RPC	NPS-100-RPC	205	1	2.0472 52	.8437	.5906 15	.2953
§ NPC-101-RPC	NPS-101-RPC	206	1 1/16	2.4409 62	.9375	.7087 18	.3543
NPC-102-RPC	NPS-102-RPC	206	1 1/8	2.4409 62	.9375	.7087 18	.3543
NPC-103-RPC	NPS-103-RPC	206	1 3/16	2.4409 62	.9375	.7087 18	.3543
NPC-103-RP2C	NPS-103-RP2C	206	1 1/4	2.4409 62	.9375	.7087 18	.3543
NPC-104-RPC	NPS-104-RPC	207	1 1/4	2.8346 72	1.0000	.7480 19	.3740
§ NPC-105-RPC	NPS-105-RPC	207	1 5/16	2.8346 72	1.0000	.7480 19	.3740
NPC-106-RPC	NPS-106-RPC	207	1 3/8	2.8346 72	1.0000	.7480 19	.3740
NPC-107-RPC	NPS-107-RPC	207	1 7/16	2.8346 72	1.0000	.7480 19	.3740
NPC-108-RPC	NPS-108-RPC	208	1 1/2	3.1496 80	1.1875	.8661 22	.4330
§ NPC-109-RPC	§ NPS-109-RPC	208	1 9/16	3.1496 80	1.1875	.8661 22	.4330

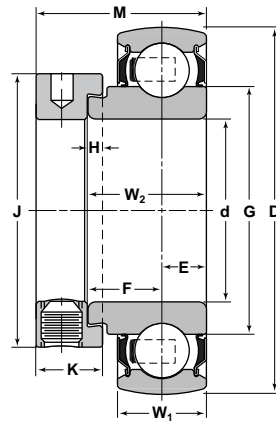
❶ ALSO AVAILABLE LESS LOCKING COLLAR BY OMITTING "C" SUFFIX

§ NOT NECESSARILY A STOCK ITEM – CHECK FOR AVAILABILITY

NPC & NPS Type—Pre-lubricated Extended Inner Ring Continued

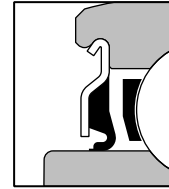


CYLINDRICAL O.D.

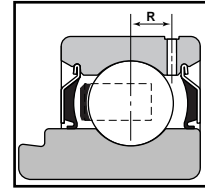


SPHERICAL O.D.

VANGUARD® "R" SEAL
SINGLE LIP



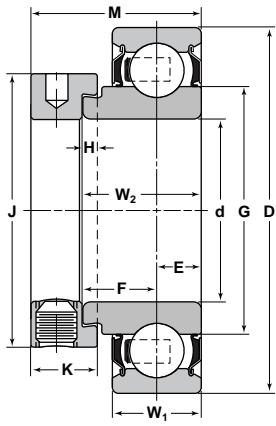
RELUBE
DIMENSION



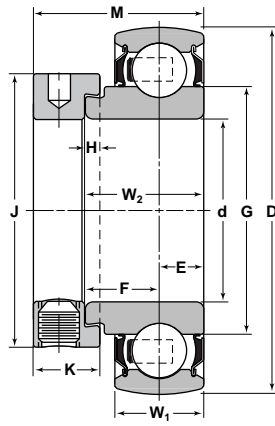
F	G	H	J	K	M	Basic Load Ratings		Collar Number
						Dynamic C	Static C ₀	
Inch/mm						lbs/N		
.4941	.957	5/32	1 1/8	17/32	1 1/8	2150 9550	1070 4760	C-008
.4941	.957	5/32	1 1/8	17/32	1 1/8	2150 9550	1070 4760	§ C-009
.4941	.957	5/32	1 1/8	17/32	1 1/8	2150 9550	1070 4760	C-010
.5484	1.134	5/32	1 5/16	17/32	1 7/32	2880 12790	1480 6580	C-012
.5484	1.331	5/32	1 1/2	17/32	1 7/32	3150 14010	1760 7830	§ C-013
.5484	1.331	5/32	1 1/2	17/32	1 7/32	3150 14010	1760 7830	C-014
.5484	1.331	5/32	1 1/2	17/32	1 7/32	3150 14010	1760 7830	C-015
.5484	1.331	5/32	1 1/2	17/32	1 7/32	3150 14010	1760 7830	C-100
.5832	1.584	5/32	1 3/4	5/8	1 13/32	4370 19450	2530 11260	C-101
.5832	1.584	5/32	1 3/4	5/8	1 13/32	4370 19450	2530 11260	C-102
.5832	1.584	5/32	1 3/4	5/8	1 13/32	4370 19450	2530 11260	C-103
.5832	1.584	5/32	1 3/4	5/8	1 13/32	4370 19450	2530 11260	C-103-2
.6260	1.894	5/32	2 1/8	11/16	1 17/32	5770 25670	3440 15300	C-104
.6260	1.894	5/32	2 1/8	11/16	1 17/32	5770 25670	3440 15300	C-105
.6260	1.894	5/32	2 1/8	11/16	1 17/32	5770 25670	3440 15300	C-106
.6260	1.894	5/32	2 1/8	11/16	1 17/32	5770 25670	3440 15300	C-107
.7545	2.084	3/16	2 3/8	23/32	1 23/32	6540 29110	4020 17900	C-108
.7545	2.084	3/16	2 3/8	23/32	1 23/32	6540 29110	4020 17900	§ C-109

❶ ALSO AVAILABLE LESS LOCKING COLLAR BY OMITTING "C" SUFFIX
 § NOT NECESSARILY A STOCK ITEM – CHECK FOR AVAILABILITY

NPC & NPS Type—Pre-lubricated Extended Inner Ring

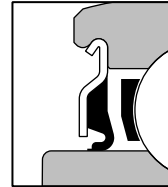


CYLINDRICAL O.D.

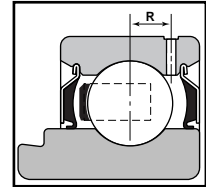


SPHERICAL O.D.

VANGUARD® "R" SEAL SINGLE LIP



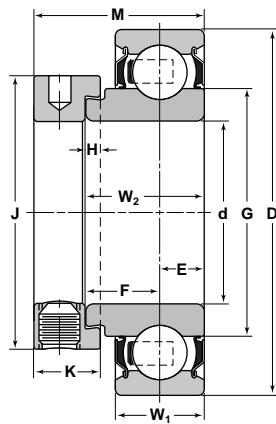
RELUBE DIMENSION



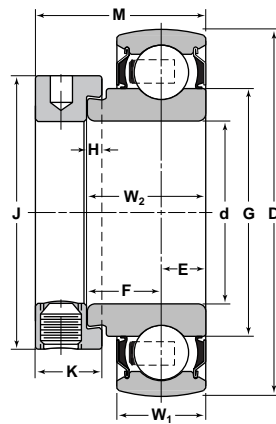
Bearing Number ❶		Basic Outer Ring	Bore	Outside Diameter	Ring Widths		E
Cylindrical Outside Diameter	Spherical Outside Diameter		d	D	Inner W ₂	Outer W ₁	
Inch/mm							
§ NPC-110-RPC	§ NPS-110-RPC	209	1 5/8	3.3465 85	1.1875	.8861 22	.4330
§ NPC-111-RPC	§ NPS-111-RPC	209	1 11/16	3.3465 85	1.1875	.8861 22	.4330
§ NPC-112-RPC	§ NPS-112-RPC	209	1 3/4	3.3465 85	1.1875	.8861 22	.4330
§ NPC-113-RPC	§ NPS-113-RPC	210	1 13/16	3.5433 90	1.1875	.8661 22	.4330
§ NPC-114-RPC	§ NPS-114-RPC	210	1 7/8	3.5433 90	1.1875	.8661 22	.4330
§ NPC-115-RPC	§ NPS-115-RPC	210	1 15/16	3.5433 90	1.1875	.8661 22	.4330
§ NPC-115-RP2C	§ NPS-115-RP2C	210	2	3.5433 90	1.1875	.8661 22	.4330

❶ ALSO AVAILABLE LESS LOCKING COLLAR BY OMITTING "C" SUFFIX
 § NOT NECESSARILY A STOCK ITEM – CHECK FOR AVAILABILITY

NPC & NPS Type—Pre-lubricated Extended Inner Ring Continued

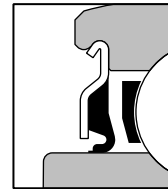


CYLINDRICAL O.D.

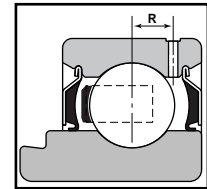


SPHERICAL O.D.

VANGUARD® "R" SEAL
SINGLE LIP



RELUBE
DIMENSION

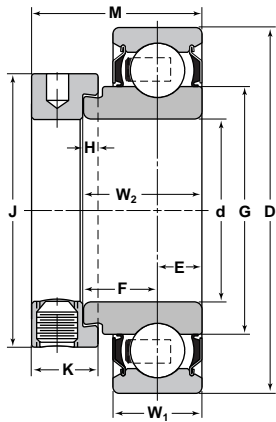


F	G	H	J	K	M	Basic Load Ratings		Collar Number
						Dynamic C	Static C ₀	
Inch/mm						lbs/N		
.7545	—	3/16	2 1/2	23/32	1 23/32	7020 31240	4570 20320	C-110
.7545	—	3/16	2 1/2	23/32	1 23/32	7020 31240	4570 20320	C-111
.7545	—	3/16	2 1/2	23/32	1 23/32	7020 31240	4570 20320	C-112
.7545	—	3/16	2 3/4	23/32	1 23/32	7890 35070	5210 23180	§ C-113
.7545	—	3/16	2 3/4	23/32	1 23/32	7890 35070	5210 23180	§ C-114
.7545	—	3/16	2 3/4	23/32	1 23/32	7890 35070	5210 23180	C-115
.7545	—	3/16	2 3/4	23/32	1 23/32	7890 35070	5210 23180	§ C-115-2

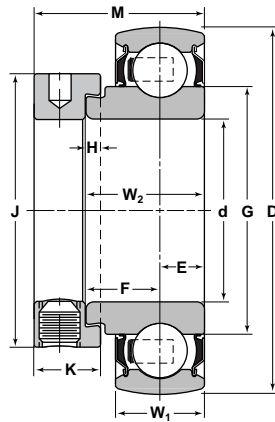
❶ ALSO AVAILABLE LESS LOCKING COLLAR BY OMITTING "C" SUFFIX

§ NOT NECESSARILY A STOCK ITEM – CHECK FOR AVAILABILITY

NPC & NPS Type—Re-lubricatable Extended Inner Ring

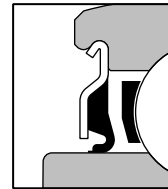


CYLINDRICAL O.D.

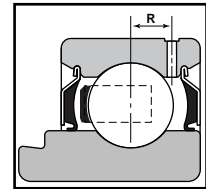


SPHERICAL O.D.

VANGUARD® "R" SEAL SINGLE LIP



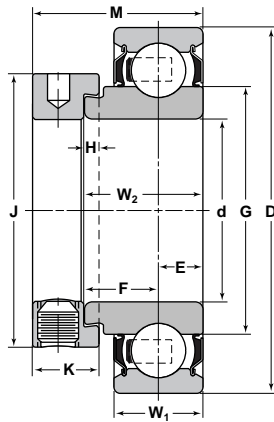
RELUBE DIMENSION



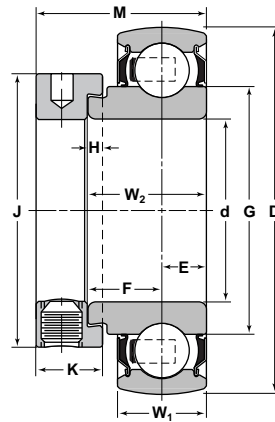
Bearing Number ①		Basic Outer Ring	Bore d	Outside Diameter D	Ring Widths		E	F
Cylindrical Outside Diameter	Spherical Outside Diameter				Inner W ₂	Outer W ₁		
Inch/mm								
§ NPC-008-RRC	NPS-008-RRC	203	1/2	1.5748 40	.7500	.5118 13	.2559	.4941
§ NPC-009-RRC	§ NPS-009-RRC	203	9/16	1.5748 40	.7500	.5118 13	.2559	.4941
§ NPC-010-RRC	NPS-010-RRC	203	5/8	1.5748 40	.7500	.5118 13	.2559	.4941
§ NPC-012-RRC	NPS-012-RRC	204	3/4	1.8504 47	.8437	.5906 15	.2953	.5484
§ NPC-013-RRC	§ NPS-013-RRS	205	13/16	2.0472 52	.8437	.5906 15	.2953	.5484
§ NPC-014-RRC	NPS-014-RRS	205	7/8	2.0472 52	.8437	.5906 15	.2953	.5484
§ NPC-015-RRC	NPS-015-RRC	205	15/16	2.0472 52	.8437	.5906 15	.2953	.5484
§ NPC-100-RRC	NPS-100-RRC	205	1	2.0472 52	.8437	.5906 15	.2953	.5484
§ NPC-101-RRC	NPS-101-RRC	206	1 1/16	2.4409 62	.9375	.7087 18	.3543	.5832
§ NPC-102-RRC	NPS-102-RRC	206	1 1/8	2.4409 62	.9375	.7087 18	.3543	.5832
§ NPC-103-RRC	NPS-103-RRC	206	1 3/16	2.4409 62	.9375	.7087 18	.3543	.5832
§ NPC-103-RR2C	NPS-103-RR2C	206	1 1/4	2.4409 62	.9375	.7087 18	.3543	.5832
§ NPC-104-RRC	NPS-104-RRC	207	1 1/4	2.8346 72	1.0000	.7480 19	.3740	.6260
§ NPC-105-RRC	NPS-105-RRC	207	1 5/16	2.8346 72	1.0000	.7480 19	.3740	.6260
§ NPC-106-RRC	NPS-106-RRC	207	1 3/8	2.8346 72	1.0000	.7480 19	.3740	.6260
§ NPC-107-RRC	NPS-107-RRC	207	1 7/16	2.8346 72	1.0000	.7480 19	.3740	.6260
§ NPC-108-RRC	NPS-108-RRC	208	1 1/2	3.1496 80	1.1875	.8661 22	.4330	.7545
§ NPC-109-RRC	§ NPS-109-RRC	208	1 9/16	3.1496 80	1.1875	.8661 22	.4330	.7545

① ALSO AVAILABLE LESS LOCKING COLLAR BY OMITTING "C" SUFFIX
 § NOT NECESSARILY A STOCK ITEM – CHECK FOR AVAILABILITY

NPC & NPS Type—Re-lubricatable Extended Inner Ring

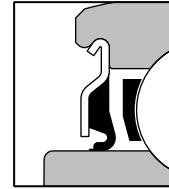


CYLINDRICAL O.D.

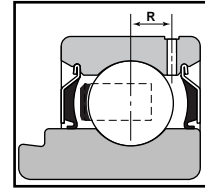


SPHERICAL O.D.

VANGUARD® "R" SEAL
SINGLE LIP



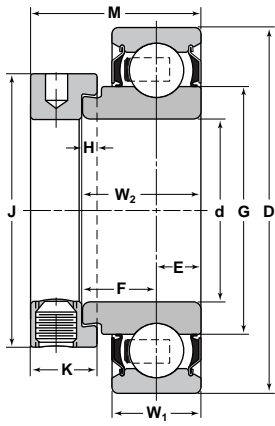
RELUBE
DIMENSION



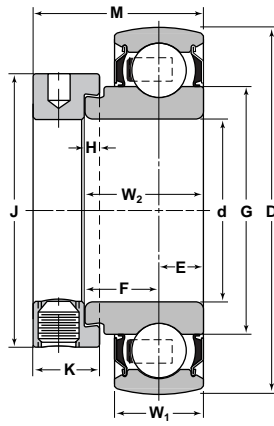
G	H	J	K	M	R	Basic Load Ratings		Collar Number
						Dynamic C	Static C ₀	
Inch/mm						lbs/N		
.957	5/32	1 1/8	17/32	1 1/8	.126	2150 9550	1070 4760	C-008
.957	5/32	1 1/8	17/32	1 1/8	.126	2150 9550	1070 4760	§ C-009
.957	5/32	1 1/8	17/32	1 1/8	.126	2150 9550	1070 4760	C-010
1.134	5/32	1 5/16	17/32	1 7/32	.152	2880 12790	1480 6580	C-012
1.331	5/32	1 1/2	17/32	1 7/32	.152	3150 14010	1760 7830	§ C-013
1.331	5/32	1 1/2	17/32	1 7/32	.152	3150 14010	1760 7830	C-014
1.331	5/32	1 1/2	17/32	1 7/32	.152	3150 14010	1760 7830	C-015
1.331	5/32	1 1/2	17/32	1 7/32	.152	3150 14010	1760 7830	C-100
1.584	5/32	1 3/4	5/8	1 13/32	.190	4370 19450	2530 11260	C-101
1.584	5/32	1 3/4	5/8	1 13/32	.190	4370 19450	2530 11260	C-102
1.584	5/32	1 3/4	5/8	1 13/32	.190	4370 19450	2530 11260	C-103
1.584	5/32	1 3/4	5/8	1 13/32	.190	4370 19450	2530 11260	C-103-2
1.894	5/32	2 1/8	11/16	1 17/32	.202	5770 25670	3440 15300	C-104
1.894	5/32	2 1/8	11/16	1 17/32	.202	5770 25670	3440 15300	C-105
1.894	5/32	2 1/8	11/16	1 17/32	.202	5770 25670	3440 15300	C-106
1.894	5/32	2 1/8	11/16	1 17/32	.202	5770 25670	3440 15300	C-107
2.084	3/16	2 3/8	23/32	1 23/32	.224	6540 29110	4020 17900	C-108
2.084	3/16	2 3/8	23/32	1 23/32	.224	6540 29110	4020 17900	§ C-109

❶ ALSO AVAILABLE LESS LOCKING COLLAR BY OMITTING "C" SUFFIX
 § NOT NECESSARILY A STOCK ITEM – CHECK FOR AVAILABILITY

NPC & NPS Type—Re-lubricatable Extended Inner Ring

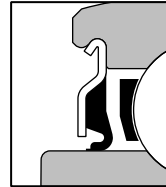


CYLINDRICAL O.D.

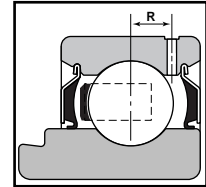


SPHERICAL O.D.

VANGUARD® "R" SEAL SINGLE LIP



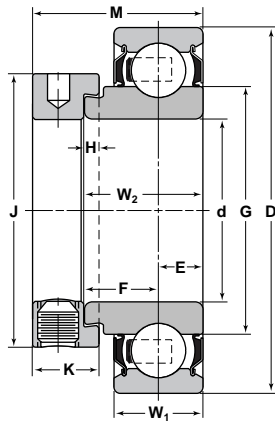
RELUBE DIMENSION



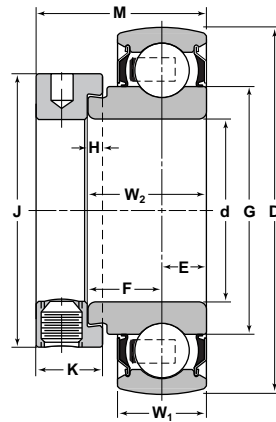
Bearing Number		Basic Outer Ring	Bore d	Outside Diameter D	Ring Widths		E	F
Cylindrical Outside Diameter	Spherical Outside Diameter				Inner W ₂	Outer W ₁		
Inch/mm								
§ NPC-110-RRC	§ NPS-110-RRC	209	1 5/8	3.3465 85	1.1875	.8861 22	.4330	.7545
§ NPC-111-RRC	§ NPS-111-RRC	209	1 11/16	3.3465 85	1.1875	.8861 22	.4330	.7545
§ NPC-112-RRC	§ NPS-112-RRC	209	1 3/4	3.3465 85	1.1875	.8861 22	.4330	.7545
§ NPC-113-RRC	§ NPS-113-RRC	210	1 13/16	3.5433 90	1.1875	.8661 22	.4330	.7545
§ NPC-114-RRC	§ NPS-114-RRC	210	1 7/8	3.5433 90	1.1875	.8661 22	.4330	.7545
§ NPC-115-RRC	§ NPS-115-RRC	210	1 15/16	3.5433 90	1.1875	.8661 22	.4330	.7545
§ NPC-115-RR2C	§ NPS-115-RR2C	210	2	3.5433 90	1.1875	.8661 22	.4330	.7545

- ⓘ ALSO AVAILABLE LESS LOCKING COLLAR BY OMITTING "C" SUFFIX
- § NOT NECESSARILY A STOCK ITEM – CHECK FOR AVAILABILITY

NPC & NPS Type—Re-lubricatable Extended Inner Ring

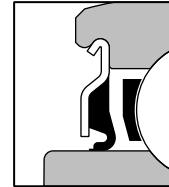


CYLINDRICAL O.D.

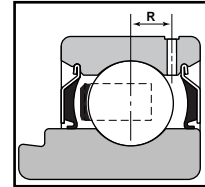


SPHERICAL O.D.

VANGUARD® "R" SEAL
SINGLE LIP



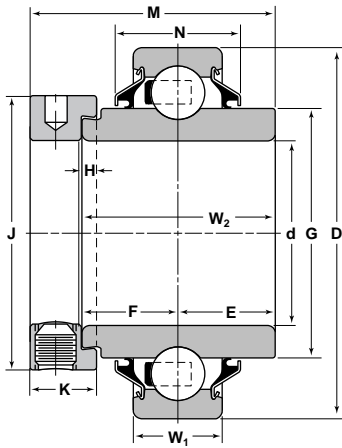
RELUBE
DIMENSION



G	H	J	K	M	R	Basic Load Ratings		Collar Number
						Dynamic C	Static C ₀	
Inch/mm						lbs/N		
—	3/16	2 1/2	23/32	1 23/32	.248	7020 31240	4570 20320	C-110
—	3/16	2 1/2	23/32	1 23/32	.248	7020 31240	4570 20320	C-111
—	3/16	2 1/2	23/32	1 23/32	.248	7020 31240	4570 20320	C-112
—	3/16	2 3/4	23/32	1 23/32	.248	7890 35070	5210 23180	§ C-113
—	3/16	2 3/4	23/32	1 23/32	.248	7890 35070	5210 23180	§ C-114
—	3/16	2 3/4	23/32	1 23/32	.248	7890 35070	5210 23180	C-115
—	3/16	2 3/4	23/32	1 23/32	.248	7890 35070	5210 23180	§ C-115-2

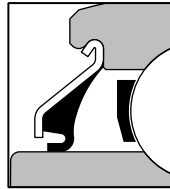
❶ ALSO AVAILABLE LESS LOCKING COLLAR BY OMITTING "C" SUFFIX
 § NOT NECESSARILY A STOCK ITEM – CHECK FOR AVAILABILITY

**WPC Type—Wide Inner Ring
Cylindrical Pre-lubricated**

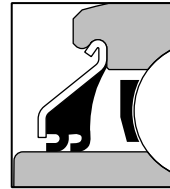


CYLINDRICAL O.D.

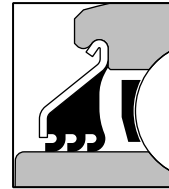
VANGUARD® "G" SEAL
SINGLE LIP



VANGUARD® "V" SEAL
DOUBLE LIP



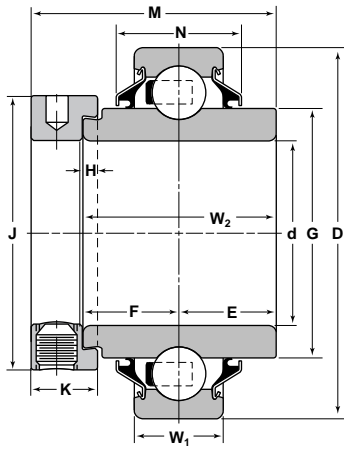
VANGUARD® "T" SEAL
TRIPLE LIP



Bearing Number with ❶			Basic Outer Ring	Bore d	Outside Diameter D	Ring Widths	
Vanguard Wide Single Lip Seal	Vanguard Wide Double Lip Seal	Vanguard Wide Triple Lip Seal				Inner W ₂	Outer W ₁
Inch/mm							
WPC-012-GPC			204	3/4	1.8504 47	1 11/32	.5512 14
§ WPC-013-GPC	§ WPC-013-VPC	§ WPC-013-TPC	205	13/16	2.0472 52	1 3/8	.5906 15
WPC-014-GPC	§ WPC-014-VPC	§ WPC-014-TPC	205	7/8	2.0472 52	1 3/8	.5906 15
§ WPC-015-GPC	§ WPC-015-VPC	§ WPC-015-TPC	205	15/16	2.0472 52	1 3/8	.5906 15
WPC-100-GPC	§ WPC-100-VPC	§ WPC-100-TPC	205	1	2.0472 52	1 3/8	.5906 15
§ WPC-101-GPC	§ WPC-101-VPC	§ WPC-101-TPC	206	1 1/16	2.4409 62	1 7/16	.6299 16
WPC-102-GPC	§ WPC-102-VPC	§ WPC-102-TPC	206	1 1/8	2.4409 62	1 7/16	.6299 16
WPC-103-GPC	§ WPC-103-VPC	§ WPC-103-TPC	206	1 3/16	2.4409 62	1 7/16	.6299 16
WPC-103-GP2C	§ WPC-103-VP2C	§ WPC-103-TP2C	206	1 1/4	2.4409 62	1 7/16	.6299 16
§ WPC-104-GPC	§ WPC-104-VPC	§ WPC-104-TPC	207	1 1/4	2.8346 72	1 31/64	.6693 17
§ WPC-105-GPC	§ WPC-105-VPC	§ WPC-105-TPC	207	1 5/16	2.8346 72	1 31/64	.6693 17
§ WPC-106-GPC	§ WPC-106-VPC	§ WPC-106-TPC	207	1 3/8	2.8346 72	1 31/64	.6693 17
WPC-107-GPC	§ WPC-107-VPC	§ WPC-107-TPC	207	1 7/16	2.8346 72	1 31/64	.6693 17
§ WPC-108-GPC	§ WPC-108-VPC	WPC-108-TPC	208	1 1/2	3.1496 80	1 11/16	.7087 18
§ WPC-109-GPC	§ WPC-109-VPC	§ WPC-109-TPC	208	1 9/16	3.1496 80	1 11/16	.7087 18
§ WPC-110-GPC		§ WPC-110-TPC	209	1 5/8	3.3465 85	1 11/16	.7480 19
§ WPC-111-GPC		§ WPC-111-TPC	209	1 11/16	3.3465 85	1 11/16	.7480 19
§ WPC-112-GPC		§ WPC-112-TPC	209	1 3/4	3.3465 85	1 11/16	.7480 19

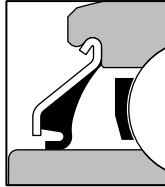
❶ ALSO AVAILABLE LESS LOCKING COLLAR BY OMITTING "C" SUFFIX.
§ NOT NECESSARILY A STOCK ITEM – CHECK FOR AVAILABILITY

WPC Type—Wide Inner Ring Cylindrical Pre-lubricated

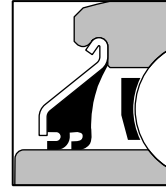


CYLINDRICAL O.D.

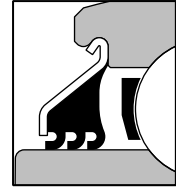
VANGUARD® "G" SEAL
SINGLE LIP



VANGUARD® "V" SEAL
DOUBLE LIP



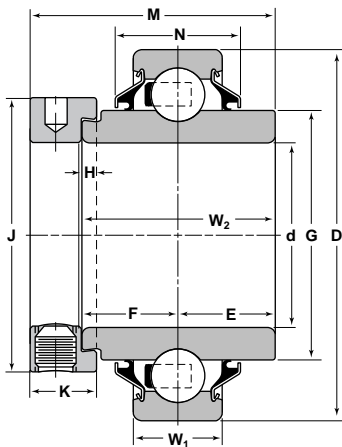
VANGUARD® "T" SEAL
TRIPLE LIP



E & F	G	H	J	K	M	N	Basic Load Ratings		Collar Number
							Dynamic C	Static C ₀	
Inch/mm							lbs/N		
$\frac{43}{64}$	1.134	$\frac{5}{32}$	$1 \frac{5}{16}$	$\frac{17}{32}$	$1 \frac{23}{32}$.760	2880 9550	1070 4760	C-012
$\frac{11}{16}$	1.331	$\frac{5}{32}$	$1 \frac{1}{2}$	$\frac{17}{32}$	$1 \frac{3}{4}$.787	3150 14010	1760 7830	§ C-013
$\frac{11}{16}$	1.331	$\frac{5}{32}$	$1 \frac{1}{2}$	$\frac{17}{32}$	$1 \frac{3}{4}$.787	3150 14010	1760 7830	C-014
$\frac{11}{16}$	1.331	$\frac{5}{32}$	$1 \frac{1}{2}$	$\frac{17}{32}$	$1 \frac{3}{4}$.787	3150 14010	1760 7830	C-015
$\frac{11}{16}$	1.331	$\frac{5}{32}$	$1 \frac{1}{2}$	$\frac{17}{32}$	$1 \frac{3}{4}$.787	3150 14010	1760 7830	C-100
$\frac{23}{32}$	1.589	$\frac{5}{32}$	$1 \frac{3}{4}$	$\frac{5}{8}$	$1 \frac{29}{32}$.876	4370 19450	2530 11260	C-101
$\frac{23}{32}$	1.589	$\frac{5}{32}$	$1 \frac{3}{4}$	$\frac{5}{8}$	$1 \frac{29}{32}$.876	4370 19450	2530 11260	C-102
$\frac{23}{32}$	1.589	$\frac{5}{32}$	$1 \frac{3}{4}$	$\frac{5}{8}$	$1 \frac{29}{32}$.876	4370 19450	2530 11260	C-103
$\frac{23}{32}$	1.589	$\frac{5}{32}$	$1 \frac{3}{4}$	$\frac{5}{8}$	$1 \frac{29}{32}$.876	4370 19450	2530 11260	C-103-2
$\frac{47}{64}$	1.847	$\frac{5}{32}$	$2 \frac{1}{8}$	$\frac{11}{16}$	$2 \frac{1}{64}$.912	5770 25670	3440 15300	C-104
$\frac{47}{64}$	1.847	$\frac{5}{32}$	$2 \frac{1}{8}$	$\frac{11}{16}$	$2 \frac{1}{64}$.912	5770 25670	3440 15300	C-105
$\frac{47}{64}$	1.847	$\frac{5}{32}$	$2 \frac{1}{8}$	$\frac{11}{16}$	$2 \frac{1}{64}$.912	5770 25670	3440 15300	C-106
$\frac{47}{64}$	1.847	$\frac{5}{32}$	$2 \frac{1}{8}$	$\frac{11}{16}$	$2 \frac{1}{64}$.912	5770 25670	3440 15300	C-107
$\frac{27}{32}$	2.084	$\frac{3}{16}$	$2 \frac{3}{8}$	$\frac{23}{32}$	$2 \frac{7}{32}$	1.000	6540 29110	4020 17900	C-108
$\frac{27}{32}$	2.084	$\frac{3}{16}$	$2 \frac{3}{8}$	$\frac{23}{32}$	$2 \frac{7}{32}$	1.000	6540 29110	4020 17900	§ C-109
$\frac{27}{32}$	2.280	$\frac{3}{16}$	$2 \frac{1}{2}$	$\frac{23}{32}$	$2 \frac{7}{32}$	1.100	7020 31240	4570 20320	C-110
$\frac{27}{32}$	2.280	$\frac{3}{16}$	$2 \frac{1}{2}$	$\frac{23}{32}$	$2 \frac{7}{32}$	1.100	7020 31240	4570 20320	C-111
$\frac{27}{32}$	2.280	$\frac{3}{16}$	$2 \frac{1}{2}$	$\frac{23}{32}$	$2 \frac{7}{32}$	1.100	7020 31240	4570 20320	C-112

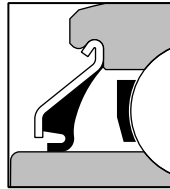
① ALSO AVAILABLE LESS LOCKING COLLAR BY OMITTING "C" SUFFIX.
§ NOT NECESSARILY A STOCK ITEM – CHECK FOR AVAILABILITY

WPC Type—Wide Inner Ring Cylindrical Pre-lubricated

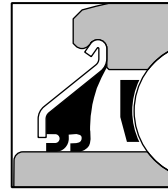


CYLINDRICAL O.D.

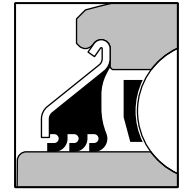
VANGUARD® "G" SEAL
SINGLE LIP



VANGUARD® "V" SEAL
DOUBLE LIP



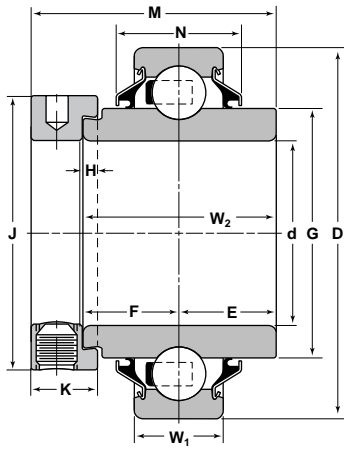
VANGUARD® "T" SEAL
TRIPLE LIP



Bearing Number with ❶			Basic Outer Ring	Bore d	Outside Diameter D	Ring Widths	
Vanguard Wide Single Lip Seal	Vanguard Wide Double Lip Seal	Vanguard Wide Triple Lip Seal				Inner W ₂	Outer W ₁
Inch/mm							
§ WPC-113-GPC		§ WPC-113-TPC	210	1 ¹³ / ₁₆	3.5433 90	1 ¹⁵ / ₁₆	.7874 20
§ WPC-114-GPC		§ WPC-114-TPC	210	1 ⁷ / ₈	3.5433 90	1 ¹⁵ / ₁₆	.7874 20
WPC-115-GPC		§ WPC-115-TPC	210	1 ¹⁵ / ₁₆	3.5433 90	1 ¹⁵ / ₁₆	.7874 20
§ WPC-115-GP2C		§ WPC-115-TP2C	210	2	3.5433 90	1 ¹⁵ / ₁₆	.7874 20
WPC-203-GPC			211	2 ³ / ₁₆	3.9370 100	2 ³ / ₁₆	.8268 21

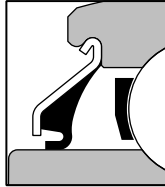
❶ ALSO AVAILABLE LESS LOCKING COLLAR BY OMITTING "C" SUFFIX.
§ NOT NECESSARILY A STOCK ITEM – CHECK FOR AVAILABILITY

WPC Type—Wide Inner Ring Cylindrical Pre-lubricated

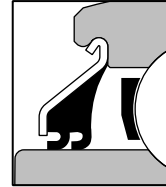


CYLINDRICAL O.D.

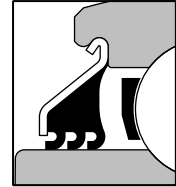
VANGUARD® "G" SEAL
SINGLE LIP



VANGUARD® "V" SEAL
DOUBLE LIP



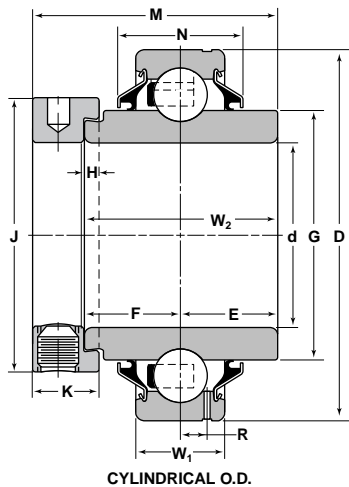
VANGUARD® "T" SEAL
TRIPLE LIP



E & F	G	H	J	K	M	N	Basic Load Ratings		Collar Number
							Dynamic C	Static C ₀	
Inch/mm							lbs/N		
$\frac{31}{32}$	2.473	$\frac{3}{16}$	$2 \frac{3}{4}$	$\frac{23}{32}$	$2 \frac{15}{32}$	1.119	7890 35070	5210 23180	§ C-113
$\frac{31}{32}$	2.473	$\frac{3}{16}$	$2 \frac{3}{4}$	$\frac{23}{32}$	$2 \frac{15}{32}$	1.119	7890 35070	5210 23180	§ C-114
$\frac{31}{32}$	2.473	$\frac{3}{16}$	$2 \frac{3}{4}$	$\frac{23}{32}$	$2 \frac{15}{32}$	1.119	7890 35070	5210 23180	C-115
$\frac{31}{32}$	2.473	$\frac{3}{16}$	$2 \frac{3}{4}$	$\frac{23}{32}$	$2 \frac{15}{32}$	1.119	7890 35070	5210 23180	§ C-115-2
$1 \frac{3}{32}$	2.762	$\frac{3}{16}$	3	$\frac{13}{16}$	$2 \frac{13}{16}$	1.220	9750 43380	6570 29220	C-203

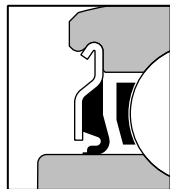
❶ ALSO AVAILABLE LESS LOCKING COLLAR BY OMITTING "C" SUFFIX.
 § NOT NECESSARILY A STOCK ITEM – CHECK FOR AVAILABILITY

**WPC Type—Wide Inner Ring
Cylindrical Re-lubricatable**

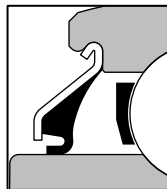


CYLINDRICAL O.D.

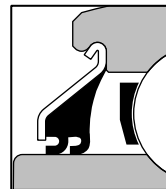
VANGUARD® "R" SEAL
SINGLE LIP



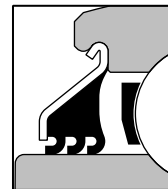
VANGUARD® "G" SEAL
SINGLE LIP



VANGUARD® "V" SEAL
DOUBLE LIP



VANGUARD® "T" SEAL
TRIPLE LIP

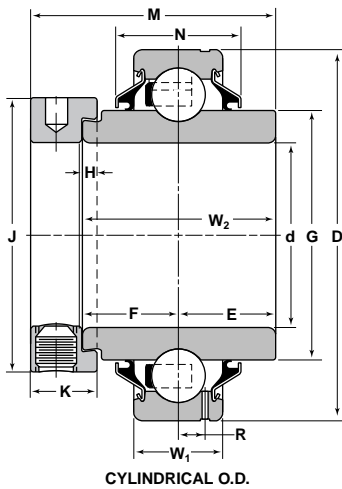


Bearing Number with ❶			Basic Outer Ring	Bore d	Outside Diameter D	Ring Widths		E & F
Vanguard Wide Single Lip Seal	Vanguard Wide Double Lip Seal	Vanguard Wide Triple Lip Seal				Inner W ₂	Outer W ₁	
Inch/mm								
§ WPC-012-GRC			204	3/4	1.8504 47	1 11/32	.5906 15	43/64
§ WPC-013-GRC	§ WPC-013-VRC	§ WPC-013-TRC	205	13/16	2.0472 52	1 3/8	.5906 15	11/16
§ WPC-014-GRC	§ WPC-014-VRC	§ WPC-014-TRC	205	7/8	2.0472 52	1 3/8	.5906 15	11/16
§ WPC-015-GRC	§ WPC-015-VRC	§ WPC-015-TRC	205	15/16	2.0472 52	1 3/8	.5906 15	11/16
§ WPC-100-GRC	§ WPC-100-VRC	WPC-100-TRC	205	1	2.0472 52	1 3/8	.5906 15	11/16
§ WPC-101-GRC	§ WPC-101-VRC	§ WPC-101-TRC	206	1 1/16	2.4409 62	1 7/16	.7087 18	23/32
§ WPC-102-GRC	§ WPC-102-VRC	§ WPC-102-TRC	206	1 1/8	2.4409 62	1 7/16	.7087 18	23/32
§ WPC-103-GRC	§ WPC-103-VRC	WPC-103-TRC	206	1 3/16	2.4409 62	1 7/16	.7087 18	23/32
§ WPC-103-GR2C	§ WPC-103-VR2C	§ WPC-103-TR2C	206	1 1/4	2.4409 62	1 7/16	.7087 18	23/32
§ WPC-104-GRC	§ WPC-104-VRC	WPC-104-TRC	207	1 1/4	2.8346 72	1 31/64	.7480 19	47/64
§ WPC-105-GRC	§ WPC-105-VRC	§ WPC-105-TRC	207	1 5/16	2.8346 72	1 31/64	.7480 19	47/64
§ WPC-106-GRC	§ WPC-106-VRC	§ WPC-106-TRC	207	1 3/8	2.8346 72	1 31/64	.7480 19	47/64
§ WPC-107-GRC	§ WPC-107-VRC	§ WPC-107-TRC	207	1 7/16	2.8346 72	1 31/64	.7480 19	47/64
§ WPC-108-GRC	§ WPC-108-VRC	§ WPC-108-TRC	208	1 1/2	3.1496 80	1 11/16	.8661 22	27/32
§ WPC-109-GRC	§ WPC-109-VRC	§ WPC-109-TRC	208	1 9/16	3.1496 80	1 11/16	.8661 22	27/32
§ WPC-110-GRC		§ WPC-110-TRC	209	1 5/8	3.3465 85	1 11/16	.8661 22	27/32
§ WPC-111-GRC		§ WPC-111-TRC	209	1 11/16	3.3465 85	1 11/16	.8661 22	27/32
§ WPC-112-GRC		§ WPC-112-TRC	209	1 3/4	3.3465 85	1 11/16	.8661 22	27/32

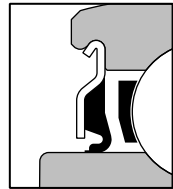
❶ ALSO AVAILABLE LESS LOCKING COLLAR BY OMITTING "C" SUFFIX.

§ NOT NECESSARILY A STOCK ITEM – CHECK FOR AVAILABILITY

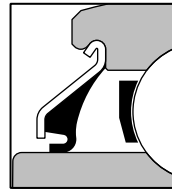
WPC Type—Wide Inner Ring Cylindrical Re-lubricatable



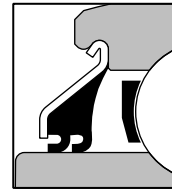
VANGUARD® "R" SEAL
SINGLE LIP



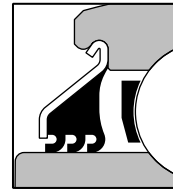
VANGUARD® "G" SEAL
SINGLE LIP



VANGUARD® "V" SEAL
DOUBLE LIP



VANGUARD® "T" SEAL
TRIPLE LIP

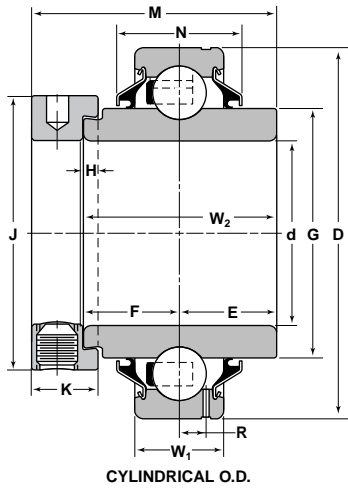


G	H	J	K	M	N	R	Basic Load Ratings		Collar Number
							Dynamic C	Static C ₀	
Inch/mm							lbs/N		
1.134	5/32	1 5/16	17/32	1 23/32	.760	.152	2880 9550	1070 4760	C-012
1.331	5/32	1 1/2	17/32	1 3/4	.787	.152	3150 14010	1760 7830	§ C-013
1.331	5/32	1 1/2	17/32	1 3/4	.787	.152	3150 14010	1760 7830	C-014
1.331	5/32	1 1/2	17/32	1 3/4	.787	.152	3150 14010	1760 7830	C-015
1.331	5/32	1 1/2	17/32	1 3/4	.787	.152	3150 14010	1760 7830	C-100
1.589	5/32	1 3/4	5/8	1 29/32	.876	.190	4370 19450	2530 11260	C-101
1.589	5/32	1 3/4	5/8	1 29/32	.876	.190	4370 19450	2530 11260	C-102
1.589	5/32	1 3/4	5/8	1 29/32	.876	.190	4370 19450	2530 11260	C-103
1.589	5/32	1 3/4	5/8	1 29/32	.876	.190	4370 19450	2530 11260	C-103-2
1.847	5/32	2 1/8	11/16	2 1/64	.912	.202	5770 25670	3440 15300	C-104
1.847	5/32	2 1/8	11/16	2 1/64	.912	.202	5770 25670	3440 15300	C-105
1.847	5/32	2 1/8	11/16	2 1/64	.912	.202	5770 25670	3440 15300	C-106
1.847	5/32	2 1/8	11/16	2 1/64	.912	.202	5770 25670	3440 15300	C-107
2.084	3/16	2 3/8	23/32	2 7/32	1.000	.224	6540 29110	4020 17900	C-108
2.084	3/16	2 3/8	23/32	2 7/32	1.000	.224	6540 29110	4020 17900	§ C-109
2.280	3/16	2 1/2	23/32	2 7/32	1.100	.248	7020 31240	4570 20320	C-110
2.280	3/16	2 1/2	23/32	2 7/32	1.100	.248	7020 31240	4570 20320	C-111
2.280	3/16	2 1/2	23/32	2 7/32	1.100	.248	7020 31240	4570 20320	C-112

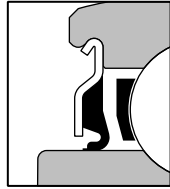
① ALSO AVAILABLE LESS LOCKING COLLAR BY OMITTING "C" SUFFIX.

§ NOT NECESSARILY A STOCK ITEM – CHECK FOR AVAILABILITY

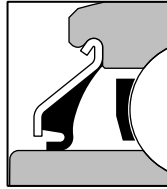
**WPC Type—Wide Inner Ring
Cylindrical Re-lubricatable**



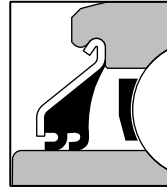
VANGUARD® "R" SEAL
SINGLE LIP



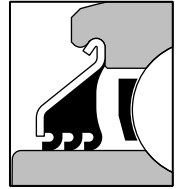
VANGUARD® "G" SEAL
SINGLE LIP



VANGUARD® "V" SEAL
DOUBLE LIP



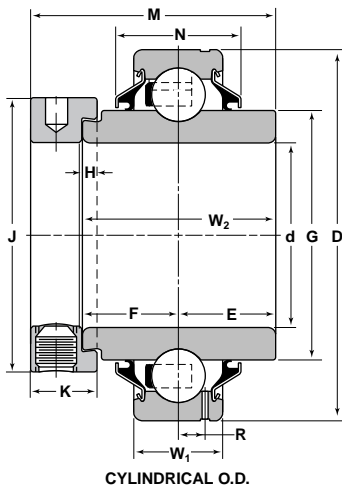
VANGUARD® "T" SEAL
TRIPLE LIP



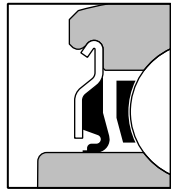
Bearing Number with ❶			Basic Outer Ring	Bore d	Outside Diameter D	Ring Widths		E & F
Vanguard Wide Single Lip Seal	Vanguard Wide Double Lip Seal	Vanguard Wide Triple Lip Seal				Inner W ₂	Outer W ₁	
Inch/mm								
§ WPC-113-GRC		§ WPC-113-TRC	210	1 13/16	3.5433 90	1 15/16	.8661 22	31/32
§ WPC-114-GRC		§ WPC-114-TRC	210	1 7/8	3.5433 90	1 15/16	.8661 22	31/32
WPC-115-GRC		WPC-115-TRC	210	1 15/16	3.5433 90	1 15/16	.8661 22	31/32
WPC-203-GRC			211	2 3/16	3.9370 100	2 3/16	.8268 21	1 3/32

❶ ALSO AVAILABLE LESS LOCKING COLLAR BY OMITTING "C" SUFFIX.
§ NOT NECESSARILY A STOCK ITEM – CHECK FOR AVAILABILITY

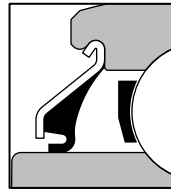
WPC Type—Wide Inner Ring Cylindrical Re-lubricatable



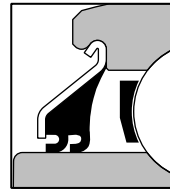
VANGUARD® "R" SEAL
SINGLE LIP



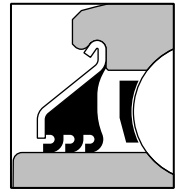
VANGUARD® "G" SEAL
SINGLE LIP



VANGUARD® "V" SEAL
DOUBLE LIP



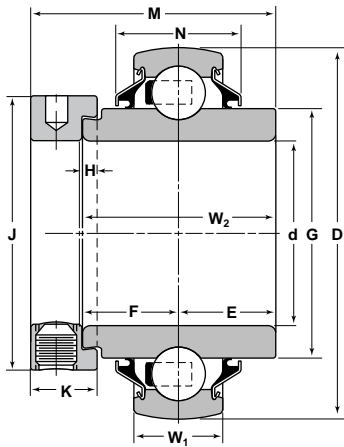
VANGUARD® "T" SEAL
TRIPLE LIP



G	H	J	K	M	N	R	Basic Load Ratings		Collar Number
							Dynamic C	Static C _o	
Inch/mm							lbs/N		
2.413	3/16	2 3/4	23/32	2 15/32	1.119	.248	7890 35070	5210 23180	§ C-113
2.413	3/16	2 3/4	23/32	2 15/32	1.119	.248	7890 35070	5210 23180	§ C-114
2.413	3/16	2 3/4	23/32	2 15/32	1.119	.248	7890 35070	5210 23180	C-115
2.762	3/16	3	13/16	2 13/16	1.220	.267	9750 43380	6570 29220	C-203

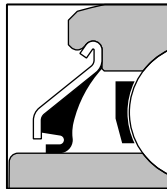
- ① ALSO AVAILABLE LESS LOCKING COLLAR BY OMITTING "C" SUFFIX.
- § NOT NECESSARILY A STOCK ITEM – CHECK FOR AVAILABILITY

**WPS Type—Wide Inner Ring
Spherical Pre-lubricated**

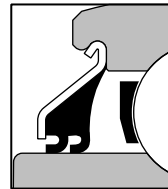


SPHERICAL O.D.

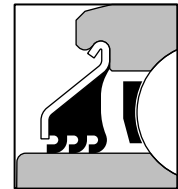
VANGUARD® "G" SEAL
SINGLE LIP



VANGUARD® "V" SEAL
DOUBLE LIP



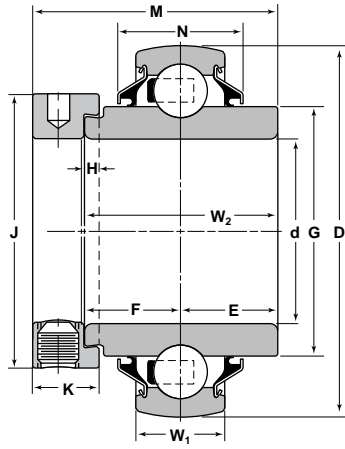
VANGUARD® "T" SEAL
TRIPLE LIP



Bearing Number with ❶			Basic Outer Ring	Bore d	Outside Diameter D	Ring Widths	
Vanguard Wide Single Lip Seal	Vanguard Wide Double Lip Seal	Vanguard Wide Triple Lip Seal				Inner W ₂	Outer W ₁
Inch/mm							
§ WPS-012-GPC			204	3/4	1.8504 47	1 11/32	.5512 14
§ WPS-013-GPC	§ WPS-013-VPC	§ WPS-013-TPC	205	13/16	2.0472 52	1 3/8	.5906 15
WPS-014-GPC	§ WPS-014-VPC	§ WPS-014-TPC	205	7/8	2.0472 52	1 3/8	.5906 15
§ WPS-015-GPC	§ WPS-015-VPC	§ WPS-015-TPC	205	15/16	2.0472 52	1 3/8	.5906 15
WPS-100-GPC	§ WPS-100-VPC	§ WPS-100-TPC	205	1	2.0472 52	1 3/8	.5906 15
§ WPS-101-GPC	§ WPS-101-VPC	§ WPS-101-TPC	206	1 1/16	2.4409 62	1 7/16	.6299 16
WPS-102-GPC	§ WPS-102-VPC	§ WPS-102-TPC	206	1 1/8	2.4409 62	1 7/16	.6299 16
§ WPS-103-GPC	§ WPS-103-VPC	§ WPS-103-TPC	206	1 3/16	2.4409 62	1 7/16	.6299 16
WPS-103-GP2C	§ WPS-103-VP2C	§ WPS-103-TP2C	206	1 1/4	2.4409 62	1 7/16	.6299 16
WPS-104-GPC	§ WPS-104-VPC	§ WPS-104-TPC	207	1 1/4	2.8346 72	1 31/64	.6693 17
§ WPS-105-GPC	§ WPS-105-VPC	§ WPS-105-TPC	207	1 5/16	2.8346 72	1 31/64	.6693 17
§ WPS-106-GPC	§ WPS-106-VPC	§ WPS-106-TPC	207	1 3/8	2.8346 72	1 31/64	.6693 17
WPS-107-GPC	§ WPS-107-VPC	§ WPS-107-TPC	207	1 7/16	2.8346 72	1 31/64	.6693 17
WPS-108-GPC	§ WPS-108-VPC	WPS-108-TPC	208	1 1/2	3.1496 80	1 11/16	.7087 18
§ WPS-109-GPC	§ WPS-109-VPC	§ WPS-109-TPC	208	1 9/16	3.1496 80	1 11/16	.7087 18
§ WPS-110-GPC		§ WPS-110-TPC	209	1 5/8	3.3465 85	1 11/16	.7480 19
§ WPS-111-GPC		§ WPS-111-TPC	209	1 11/16	3.3465 85	1 11/16	.7480 19
§ WPS-112-GPC		§ WPS-112-TPC	209	1 3/4	3.3465 85	1 11/16	.7480 19

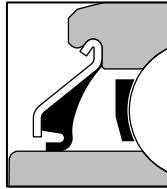
❶ ALSO AVAILABLE LESS LOCKING COLLAR BY OMITTING "C" SUFFIX.
§ NOT NECESSARILY A STOCK ITEM – CHECK FOR AVAILABILITY

WPS Type—Wide Inner Ring Spherical Pre-lubricated

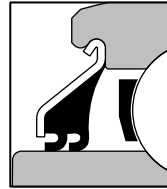


SPHERICAL O.D.

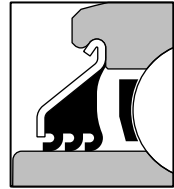
VANGUARD® "G" SEAL
SINGLE LIP



VANGUARD® "V" SEAL
DOUBLE LIP



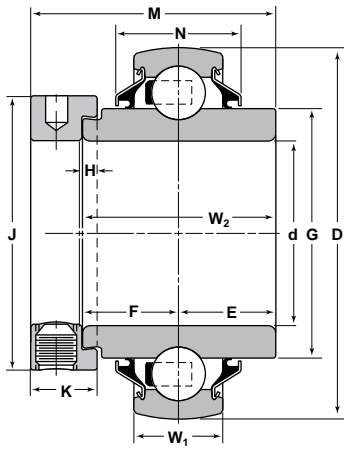
VANGUARD® "T" SEAL
TRIPLE LIP



E & F	G	H	J	K	M	N	Basic Load Ratings		Collar Number
							Dynamic C	Static C _o	
Inch/mm							lbs/N		
$\frac{43}{64}$	1.134	$\frac{5}{32}$	$1 \frac{5}{16}$	$\frac{17}{32}$	$1 \frac{23}{32}$.760	2880 9550	1070 4760	C-012
$\frac{11}{16}$	1.331	$\frac{5}{32}$	$1 \frac{1}{2}$	$\frac{17}{32}$	$1 \frac{3}{4}$.787	3150 14010	1760 7830	§ C-013
$\frac{11}{16}$	1.331	$\frac{5}{32}$	$1 \frac{1}{2}$	$\frac{17}{32}$	$1 \frac{3}{4}$.787	3150 14010	1760 7830	C-014
$\frac{1}{16}$	1.331	$\frac{5}{32}$	$1 \frac{1}{2}$	$\frac{17}{32}$	$1 \frac{3}{4}$.787	3150 14010	1760 7830	C-015
$\frac{1}{16}$	1.331	$\frac{5}{32}$	$1 \frac{1}{2}$	$\frac{17}{32}$	$1 \frac{3}{4}$.787	3150 14010	1760 7830	C-100
$\frac{23}{32}$	1.589	$\frac{5}{32}$	$1 \frac{3}{4}$	$\frac{5}{8}$	$1 \frac{29}{32}$.876	4370 19450	2530 11260	C-101
$\frac{23}{32}$	1.589	$\frac{5}{32}$	$1 \frac{3}{4}$	$\frac{5}{8}$	$1 \frac{29}{32}$.876	4370 19450	2530 11260	C-102
$\frac{23}{32}$	1.589	$\frac{5}{32}$	$1 \frac{3}{4}$	$\frac{5}{8}$	$1 \frac{29}{32}$.876	4370 19450	2530 11260	C-103
$\frac{23}{32}$	1.589	$\frac{5}{32}$	$1 \frac{3}{4}$	$\frac{5}{8}$	$1 \frac{29}{32}$.876	4370 19450	2530 11260	C-103-2
$\frac{47}{64}$	1.847	$\frac{5}{32}$	$2 \frac{1}{8}$	$\frac{11}{16}$	$2 \frac{1}{64}$.912	5770 25670	4330 15300	C-104
$\frac{47}{64}$	1.847	$\frac{5}{32}$	$2 \frac{1}{8}$	$\frac{11}{16}$	$2 \frac{1}{64}$.912	5770 25670	4330 15300	C-105
$\frac{47}{64}$	1.847	$\frac{5}{32}$	$2 \frac{1}{8}$	$\frac{11}{16}$	$2 \frac{1}{64}$.912	5770 25670	4330 15300	C-106
$\frac{47}{64}$	1.847	$\frac{5}{32}$	$2 \frac{1}{8}$	$\frac{11}{16}$	$2 \frac{1}{64}$.912	5770 25670	4330 15300	C-107
$\frac{27}{32}$	2.084	$\frac{3}{16}$	$2 \frac{3}{8}$	$\frac{23}{32}$	$2 \frac{7}{32}$	1.000	6540 29110	4020 17900	C-108
$\frac{27}{32}$	2.084	$\frac{3}{16}$	$2 \frac{3}{8}$	$\frac{23}{32}$	$2 \frac{7}{32}$	1.000	6540 29110	4020 17900	§ C-109
$\frac{27}{32}$	2.280	$\frac{3}{16}$	$2 \frac{1}{2}$	$\frac{23}{32}$	$2 \frac{7}{32}$	1.100	7020 31240	4570 20320	C-110
$\frac{27}{32}$	2.280	$\frac{3}{16}$	$2 \frac{1}{2}$	$\frac{23}{32}$	$2 \frac{7}{32}$	1.100	7020 31240	4570 20320	C-111
$\frac{27}{32}$	2.280	$\frac{3}{16}$	$2 \frac{1}{2}$	$\frac{23}{32}$	$2 \frac{7}{32}$	1.100	7020 31240	4570 20320	C-112

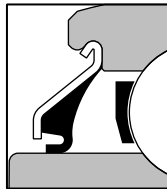
① ALSO AVAILABLE LESS LOCKING COLLAR BY OMITTING "C" SUFFIX.
§ NOT NECESSARILY A STOCK ITEM – CHECK FOR AVAILABILITY

**WPS Type—Wide Inner Ring
Spherical Pre-lubricated**

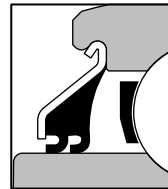


SPHERICAL O.D.

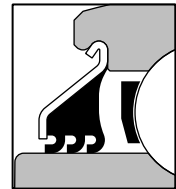
VANGUARD® "G" SEAL
SINGLE LIP



VANGUARD® "V" SEAL
DOUBLE LIP



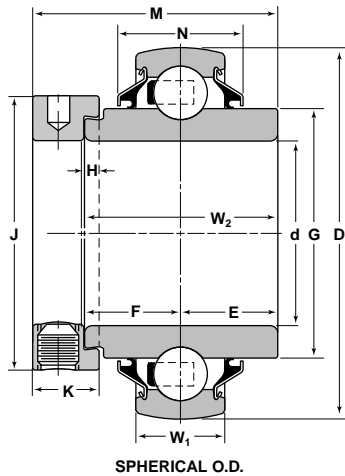
VANGUARD® "T" SEAL
TRIPLE LIP



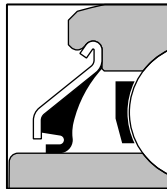
Bearing Number with ❶			Basic Outer Ring	Bore d	Outside Diameter D	Ring Widths	
Vanguard Wide Single Lip Seal	Vanguard Wide Double Lip Seal	Vanguard Wide Triple Lip Seal				Inner W ₂	Outer W ₁
Inch/mm							
§ WPS-113-GPC		§ WPS-113-TPC	210	1 13/16	3.5433 90	1 15/16	.7874 20
§ WPS-114-GPC		§ WPS-114-TPC	210	1 7/8	3.5433 90	1 15/16	.7874 20
§ WPS-115-GPC		§ WPS-115-TPC	210	1 15/16	3.5433 90	1 15/16	.7874 20
§ WPS-115-GP2C		§ WPS-115-TP2C	210	2	3.5433 90	1 15/16	.7874 20

❶ ALSO AVAILABLE LESS LOCKING COLLAR BY OMITTING "C" SUFFIX.
§ NOT NECESSARILY A STOCK ITEM – CHECK FOR AVAILABILITY

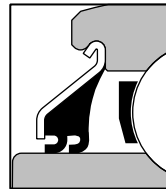
WPS Type—Wide Inner Ring Spherical Pre-lubricated



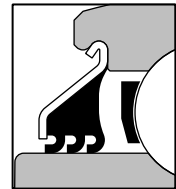
VANGUARD® "G" SEAL
SINGLE LIP



VANGUARD® "V" SEAL
DOUBLE LIP



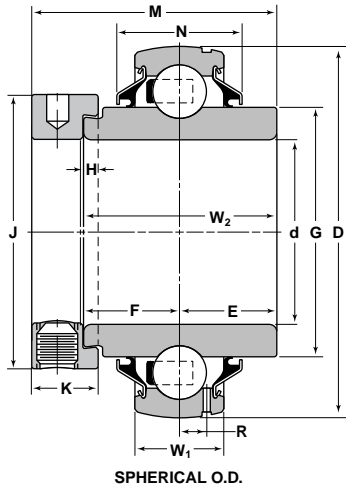
VANGUARD® "T" SEAL
TRIPLE LIP



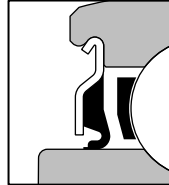
E & F	G	H	J	K	M	N	Basic Load Ratings		Collar Number
							Dynamic C	Static C ₀	
Inch/mm							lbs/N		
$3\frac{1}{32}$	2.473	$\frac{3}{16}$	$2\frac{3}{4}$	$2\frac{3}{32}$	$2\frac{15}{32}$	1.119	7890 35070	5210 23180	§ C-113
$3\frac{1}{32}$	2.473	$\frac{3}{16}$	$2\frac{3}{4}$	$2\frac{3}{32}$	$2\frac{15}{32}$	1.119	7890 35070	5210 23180	§ C-114
$3\frac{1}{32}$	2.473	$\frac{3}{16}$	$2\frac{3}{4}$	$2\frac{3}{32}$	$2\frac{15}{32}$	1.119	7890 35070	5210 23180	C-115
$3\frac{1}{32}$	2.473	$\frac{3}{16}$	$2\frac{3}{4}$	$2\frac{3}{32}$	$2\frac{15}{32}$	1.119	7890 35070	5210 23180	§ C-115-2

- ❶ ALSO AVAILABLE LESS LOCKING COLLAR BY OMITTING "C" SUFFIX.
- § NOT NECESSARILY A STOCK ITEM – CHECK FOR AVAILABILITY

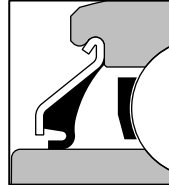
WPS Type—Wide Inner Ring
Spherical Re-lubricatable



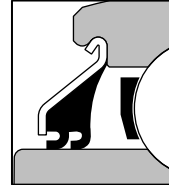
VANGUARD® "R" SEAL
SINGLE LIP



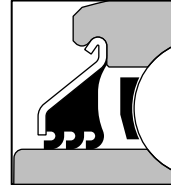
VANGUARD® "G" SEAL
SINGLE LIP



VANGUARD® "V" SEAL
DOUBLE LIP



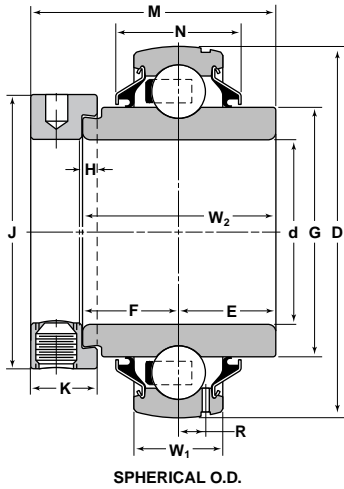
VANGUARD® "T" SEAL
TRIPLE LIP



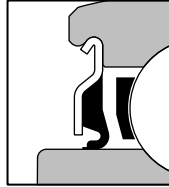
Bearing Number with ❶			Basic Outer Ring	Bore d	Outside Diameter D	Ring Widths		E & F
Vanguard Wide Single Lip Seal	Vanguard Wide Double Lip Seal	Vanguard Wide Triple Lip Seal				Inner W ₂	Outer W ₁	
Inch/mm								
§ WPS-012-GRC			204	3/4	1.8504 47	1 11/32	.5906 15	43/64
WPS-013-GRC	§ WPS-013-VRC	§ WPS-013-TRC	205	13/16	2.0472 52	1 3/8	.5906 15	11/16
WPS-014-GRC	§ WPS-014-VRC	§ WPS-014-TRC	205	7/8	2.0472 52	1 3/8	.5906 15	11/16
WPS-015-GRC	§ WPS-015-VRC	§ WPS-015-TRC	205	15/16	2.0472 52	1 3/8	.5906 15	11/16
WPS-100-GRC	§ WPS-100-VRC	WPS-100-TRC	205	1	2.0472 52	1 3/8	.5906 15	11/16
WPS-101-GRC	§ WPS-101-VRC	§ WPS-101-TRC	206	1 1/16	2.4409 62	1 7/16	.7087 18	23/32
WPS-102-GRC	§ WPS-102-VRC	§ WPS-102-TRC	206	1 1/8	2.4409 62	1 7/16	.7087 18	23/32
WPS-103-GRC	§ WPS-103-VRC	WPS-103-TRC	206	1 3/16	2.4409 62	1 7/16	.7087 18	23/32
WPS-103-GR2C	§ WPS-103-VR2C	WPS-103-TR2C	206	1 1/4	2.4409 62	1 7/16	.7087 18	23/32
WPS-104-GRC	§ WPS-104-VRC	WPS-104-TRC	207	1 1/4	2.8346 72	1 31/64	.7480 19	47/64
WPS-105-GRC	§ WPS-105-VRC	§ WPS-105-TRC	207	1 5/16	2.8346 72	1 31/64	.7480 19	47/64
WPS-106-GRC	§ WPS-106-VRC	§ WPS-106-TRC	207	1 3/8	2.8346 72	1 31/64	.7480 19	47/64
WPS-107-GRC	§ WPS-107-VRC	WPS-107-TRC	207	1 7/16	2.8346 72	1 31/64	.7480 19	47/64
WPS-108-GRC	§ WPS-108-VRC	WPS-108-TRC	208	1 1/2	3.1496 80	1 11/16	.8661 22	27/32
WPS-109-GRC	§ WPS-109-VRC	§ WPS-109-TRC	208	1 9/16	3.1496 80	1 11/16	.8661 22	27/32
WPS-110-GRC		§ WPS-110-TRC	209	1 5/8	3.3465 85	1 11/16	.8661 22	27/32
WPS-111-GRC		WPS-111-TRC	209	1 11/16	3.3465 85	1 11/16	.8661 22	27/32
WPS-112-GRC		WPS-112-TRC	209	1 3/4	3.3465 85	1 11/16	.8661 22	27/32

❶ ALSO AVAILABLE LESS LOCKING COLLAR BY OMITTING "C" SUFFIX.
§ NOT NECESSARILY A STOCK ITEM – CHECK FOR AVAILABILITY

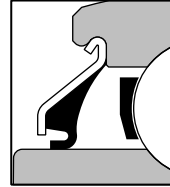
WPS Type—Wide Inner Ring Spherical Re-lubricatable



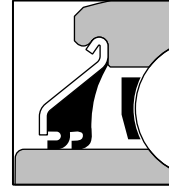
VANGUARD® "R" SEAL
SINGLE LIP



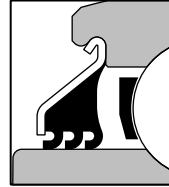
VANGUARD® "G" SEAL
SINGLE LIP



VANGUARD® "V" SEAL
DOUBLE LIP



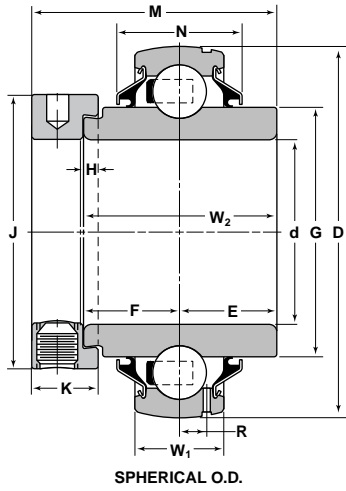
VANGUARD® "T" SEAL
TRIPLE LIP



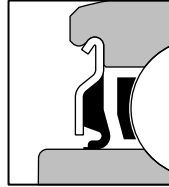
G	H	J	K	M	N	R	Basic Load Ratings		Collar Number
							Dynamic C	Static C ₀	
Inch/mm							lbs/N		
1.134	5/32	1 5/16	17/32	1 23/32	.760	.152	2880 9550	1070 4760	C-012
1.331	5/32	1 1/2	17/32	1 3/4	.787	.152	3150 14010	1760 7830	C-013
1.331	5/32	1 1/2	17/32	1 3/4	.787	.152	3150 14010	1760 7830	C-014
1.331	5/32	1 1/2	17/32	1 3/4	.787	.152	3150 14010	1760 7830	C-015
1.331	5/32	1 1/2	17/32	1 3/4	.787	.152	3150 14010	1760 7830	C-100
1.589	5/32	1 3/4	5/8	1 29/32	.876	.190	4370 19450	2530 11260	C-101
1.589	5/32	1 3/4	5/8	1 29/32	.876	.190	4370 19450	2530 11260	C-102
1.589	5/32	1 3/4	5/8	1 29/32	.876	.190	4370 19450	2530 11260	C-103
1.589	5/32	1 3/4	5/8	1 29/32	.876	.190	4370 19450	2530 11260	C-103-2
1.847	5/32	2 1/8	11/16	2 1/64	.912	.202	5770 25670	3440 15300	C-104
1.847	5/32	2 1/8	11/16	2 1/64	.912	.202	5770 25670	3440 15300	C-105
1.847	5/32	2 1/8	11/16	2 1/64	.912	.202	5770 25670	3440 15300	C-106
1.847	5/32	2 1/8	11/16	2 1/64	.912	.202	5770 25670	3440 15300	C-107
2.084	3/16	2 3/8	23/32	2 7/32	1.000	.224	6540 29110	4020 17900	C-108
2.084	3/16	2 3/8	23/32	2 7/32	1.000	.224	6540 29110	4020 17900	C-109
2.280	3/16	2 1/2	23/32	2 7/32	1.100	.248	7020 31240	4570 20320	C-110
2.280	3/16	2 1/2	23/32	2 7/32	1.100	.248	7020 31240	4570 20320	C-111
2.280	3/16	2 1/2	23/32	2 7/32	1.100	.248	7020 31240	4570 20320	C-112

① ALSO AVAILABLE LESS LOCKING COLLAR BY OMITTING "C" SUFFIX.
 § NOT NECESSARILY A STOCK ITEM – CHECK FOR AVAILABILITY

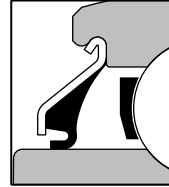
**WPS Type—Wide Inner Ring
Spherical Re-lubricatable**



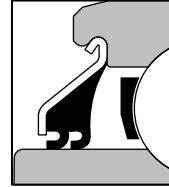
VANGUARD[®] "R" SEAL
SINGLE LIP



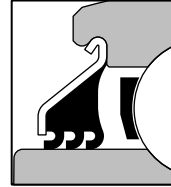
VANGUARD[®] "G" SEAL
SINGLE LIP



VANGUARD[®] "V" SEAL
DOUBLE LIP



VANGUARD[®] "T" SEAL
TRIPLE LIP

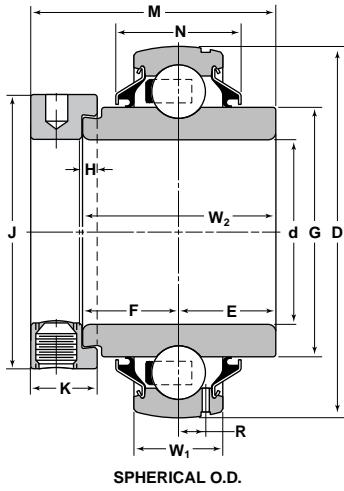


Bearing Number with ❶			Basic Outer Ring	Bore d	Outside Diameter D	Ring Widths		E & F
Vanguard Wide Single Lip Seal	Vanguard Wide Double Lip Seal	Vanguard Wide Triple Lip Seal				Inner W ₂	Outer W ₁	
Inch/mm								
WPS-113-GRC		§ WPS-113-TRC	210	1 13/16	3.5433 90	1 15/16	.8661 22	31/32
WPS-114-GRC		§ WPS-114-TRC	210	1 7/8	3.5433 90	1 15/16	.8661 22	31/32
WPS-115-GRC		WPS-115-TRC	210	1 15/16	3.5433 90	1 15/16	.8661 22	31/32
WPS-115-GR2C			210	2	3.5433 90	1 15/16	.8661 22	31/32
WPS-200-GRC		§ WPS-200-TRC	211	2	3.9370 100	2 3/16	.9843 25	1 3/32
WPS-203-GRC			211	2 3/16	3.9370 100	2 3/16	.9843 25	1 3/32
WPS-204-GRC			212	2 1/4	4.3307 110	2 7/16	1.0630 27	1 7/32
WPS-207-GRC			212	2 7/16	4.3307 110	2 7/16	1.0630 27	1 7/32

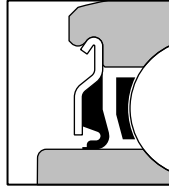
❶ ALSO AVAILABLE LESS LOCKING COLLAR BY OMITTING "C" SUFFIX.

§ NOT NECESSARILY A STOCK ITEM – CHECK FOR AVAILABILITY

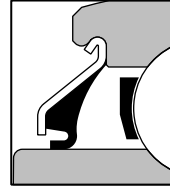
WPS Type—Wide Inner Ring Spherical Re-lubricatable



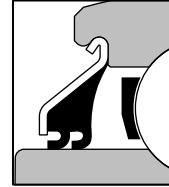
VANGUARD® "R" SEAL
SINGLE LIP



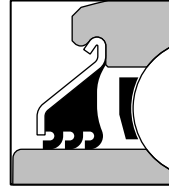
VANGUARD® "G" SEAL
SINGLE LIP



VANGUARD® "V" SEAL
DOUBLE LIP



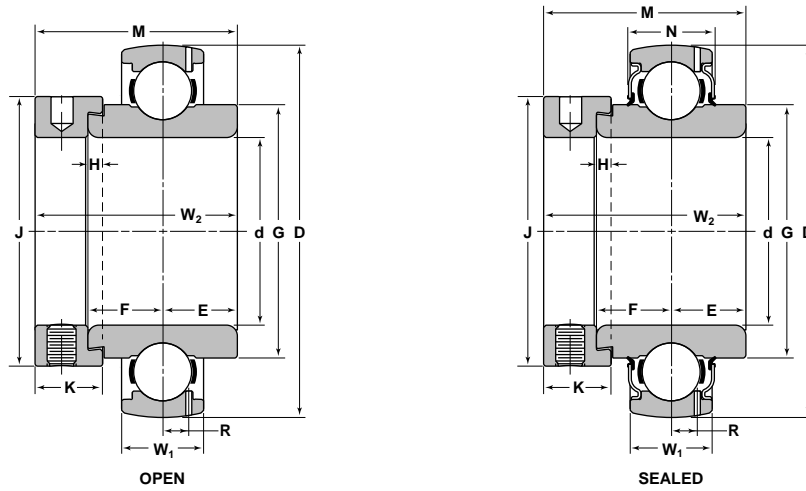
VANGUARD® "T" SEAL
TRIPLE LIP



G	H	J	K	M	N	R	Basic Load Ratings		Collar Number
							Dynamic C	Static C ₀	
Inch/mm							lbs/N		
2.413	3/16	2 3/4	23/32	2 15/32	1.119	.248	7890 35070	5210 23180	C-113
2.413	3/16	2 3/4	23/32	2 15/32	1.119	.248	7890 35070	5210 23180	C-114
2.413	3/16	2 3/4	23/32	2 15/32	1.119	.248	7890 35070	5210 23180	C-115
2.413	3/16	2 3/4	23/32	2 15/32	1.119	.248	7890 35070	5210 23180	C-115-2
2.762	3/16	3	13/16	2 13/16	1.220	.267	9750 43380	6570 29220	C-200
2.762	3/16	3	13/16	2 13/16	1.220	.267	9750 43380	6570 29220	C-203
3.049	1/4	3 5/16	7/8	3 1/16	1.220	.299	10740 47760	7400 32930	C-204
3.049	1/4	3 5/16	7/8	3 1/16	1.220	.299	10740 47760	7400 32930	C-207

- ① ALSO AVAILABLE LESS LOCKING COLLAR BY OMITTING "C" SUFFIX.
- § NOT NECESSARILY A STOCK ITEM – CHECK FOR AVAILABILITY

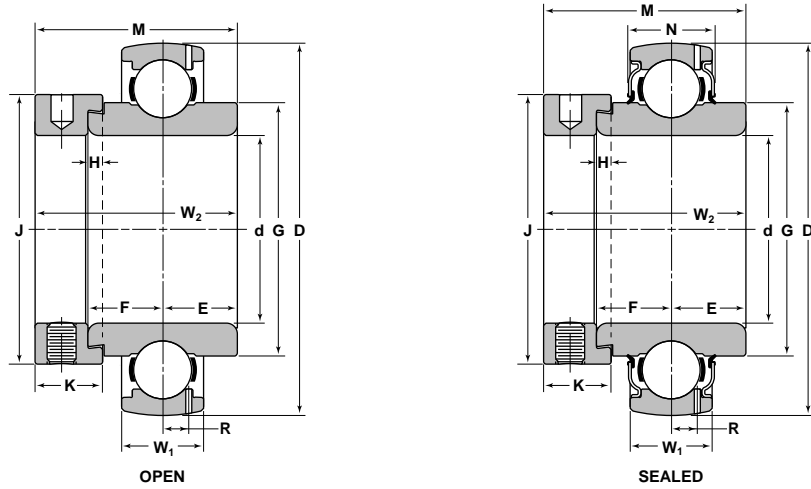
WPSH Type—Heavy Series Wide Inner Ring



Bearing Number		Basic Outer Ring	Bore d	Outside Diameter D	Ring Widths		E & F	G
Open	Sealed				Inner W ₂	Outer W ₁		
Inch								
§ WPSH-103-C	§ WPSH-103-RRC	306	1.1875	2.8346	1.4375	.7480	.688	1.718
§ WPSH-104-C	§ WPSH-104-RRC	307	1.2500	3.1496	1.5000	.8268	.719	2.138
§ WPSH-106-C	§ WPSH-106-RRC	307	1.3750	3.1496	1.5000	.8268	.719	2.138
§ WPSH-107-C	§ WPSH-107-RRC	307	1.4375	3.1496	1.5000	.8268	.719	2.138
§ WPSH-108-C	§ WPSH-108-RRC	308	1.5000	3.5433	1.6250	.9055	.781	2.138
§ WPSH-110-C	§ WPSH-110-RRC	309	1.6250	3.9370	1.6875	.9843	.781	2.471
§ WPSH-111-C	§ WPSH-111-RRC	309	1.6875	3.9370	1.6875	.9843	.781	2.471
§ WPSH-112-C	§ WPSH-112-RRC	309	1.7500	3.9370	1.6875	.9843	.781	2.471
§ WPSH-114-C	WPSH-114-RRC	310	1.8750	4.3307	1.9375	1.0630	.969	2.790
§ WPSH-115-C	WPSH-115-RRC	310	1.9375	4.3307	1.9375	1.0630	.969	2.790
§ WPSH-200-C	WPSH-200-RRC	311	2.0000	4.7244	2.1875	1.1417	1.094	2.947
§ WPSH-203-C	WPSH-203-RRC	311	2.1875	4.7244	2.1875	1.1417	1.094	2.947
§ WPSH-207-C	WPSH-207-RRC	312	2.4375	5.1181	2.4375	1.2200	1.219	3.205
§ WPSH-211-C	WPSH-211-RRC	314	2.6875	5.9055	2.6875	1.3780	1.344	3.721
§ WPSH-215-C	WPSH-215-RRC	315	2.9375	6.2992	2.9375	1.4570	1.469	3.979
§ WPSH-303-C	WPSH-303-RRC	316	3.1875	6.6929	3.1875	1.5354	1.594	4.251
§ WPSH-307-C	WPSH-307-RRC	318	3.4375	7.4803	3.4375	1.6930	1.719	4.767
§ WPSH-315-C	WPSH-315-RRC	320	3.9375	8.4646	3.9375	1.8504	1.969	5.339

§ NOT NECESSARILY A STOCK ITEM – CHECK FOR AVAILABILITY

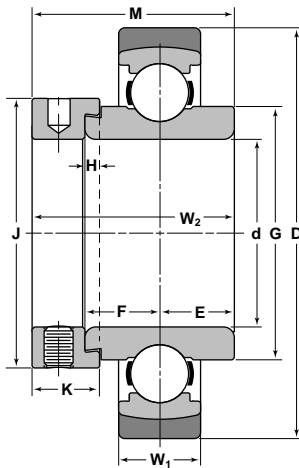
WPSH Type—Heavy Series Wide Inner Ring



H	J	K	M	N	R	Basic Load Ratings		Collar Number §
						Dynamic C	Static C ₀	
Inch						lbs/N		
.156	1.937	.687	1.969	.75	.252	5980 26590	3350 14890	CH-103
.156	2.187	.687	2.031	.83	.277	7480 33290	4290 19090	CH-104
.156	2.187	.687	2.031	.83	.277	7480 33290	4290 19090	CH-106
.156	2.187	.687	2.031	.83	.277	7480 33290	4290 19090	CH-107
.188	2.500	.812	2.250	.91	.310	9150 40720	5380 23950	CH-108
.188	2.750	.812	2.313	.98	.335	11860 52770	7120 31670	CH-110
.188	2.750	.812	2.313	.98	.335	11860 52770	7120 31670	CH-111
.188	2.750	.812	2.313	.98	.335	11860 52770	7120 31670	CH-112
.188	3.000	.875	2.625	1.17	.339	13900 61810	8510 37850	CH-114
.188	3.000	.875	2.625	1.17	.339	13900 61810	8510 37850	CH-115
.188	3.250	.875	2.875	1.36	.361	16070 71470	10020 44570	CH-200
.188	3.250	.875	2.875	1.36	.361	16070 71470	10020 44570	CH-203
.250	3.250	.938	3.125	1.44	.394	18380 81750	11660 51850	CH-207
.250	4.000	1.063	3.500	1.56	.454	23410 104130	15300 68040	CH-211
.250	4.875	1.250	3.938	1.63	.486	25500 113420	17300 76960	CH-215
.250	4.688	1.250	4.188	1.71	.520	27640 122940	19450 86500	CH-303
.312	5.250	1.438	4.563	1.87	.564	32060 142610	24110 107230	CH-307
.312	5.750	1.438	5.063	2.03	.640	38890 173000	31560 140400	CH-315

§ NOT NECESSARILY A STOCK ITEM – CHECK FOR AVAILABILITY

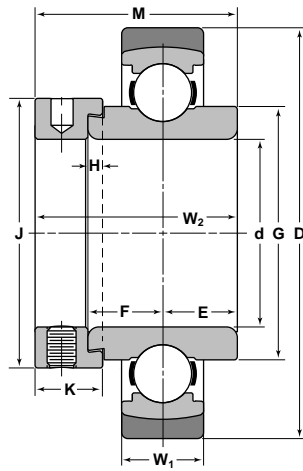
**WPSH-AC Type—Heavy Series
Wide Inner Ring With External Aligning Ring**



Bearing Number	Basic Outer Ring	Bore d	Outside Diameter D	Ring Widths		E & F	G
				Inner W ₂	Outer W ₁		
Inch							
WPSH-115-AC	310	1.9375	4.7244	1.9375	1.0630	.969	2.790
WPSH-203-AC	311	2.1875	5.1181	2.1875	1.1417	1.094	2.947
WPSH-207-AC	312	2.4375	5.7087	2.4375	1.2200	1.219	3.205
WPSH-211-AC	314	2.6875	6.4961	2.6875	1.3780	1.344	3.721
WPSH-215-AC	315	2.9375	6.8898	2.9375	1.4570	1.469	3.979
WPSH-303-AC	316	3.1875	7.4803	3.1875	1.5354	1.594	4.251
WPSH-307-AC	318	3.4375	8.2677	3.4375	1.6930	1.719	4.767
WPSH-315-AC	320	3.9375	9.2520	3.9375	1.8504	1.969	5.339

§ NOT NECESSARILY A STOCK ITEM – CHECK FOR AVAILABILITY

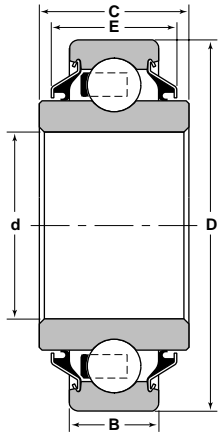
WPSH-AC Type—Heavy Series Wide Inner Ring With External Aligning Ring



H	J	K	M	Basic Load Ratings		Collar Number §
				Dynamic C	Static C ₀	
Inch				lbs/N		
.188	3.000	.875	2.625	13900 61810	8510 37850	CH-115
.188	3.250	.875	2.875	16070 71470	10020 44570	CH-203
.250	3.250	.938	3.125	18380 81750	11660 51850	CH-207
.250	4.000	1.063	3.500	23410 104130	15300 68040	CH-211
.250	4.875	1.250	3.939	25500 113420	17300 76960	CH-215
.250	4.688	1.250	4.188	27640 122940	19450 86500	CH-303
.312	5.250	1.438	4.563	32060 142610	24110 107230	CH-307
.312	5.750	1.438	5.063	38890 173000	31560 140400	CH-315

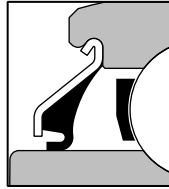
§ NOT NECESSARILY A STOCK ITEM – CHECK FOR AVAILABILITY

**HP Type—Hex Bore
Cylindrical Pre-lubricated**

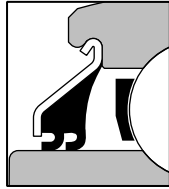


CYLINDRICAL O.D.
PRELUBRICATED

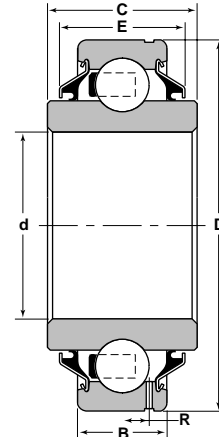
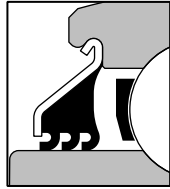
VANGUARD® "G" SEAL
SINGLE LIP



VANGUARD® "V" SEAL
DOUBLE LIP

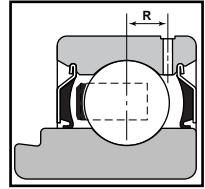


VANGUARD® "T" SEAL
TRIPLE LIP



CYLINDRICAL O.D.
RELUBRICATABLE

RELUBE
DIMENSION



Bearing Number with			Basic Outer Ring	Hex Bore		Outside Diameter D	Bore d
Vanguard Wide Single Lip Seal	Vanguard Wide Double Lip Seal	Vanguard Wide Triple Lip Seal		Shaft Size	Across Flats		
Inch/mm							
§ HPC-010-GP			204	5/8	.626	1.8504 47	.5512 14
HPC-011-GP			204	11/16	.688	1.8504 47	.5512 14
§ HPC-012-GP	§ HPC-012-VP		205	3/4	.751	2.0472 52	.5906 15
HPC-014-GP	§ HPC-014-VP		205	7/8	.876	2.0472 52	.5906 15
HPC-100-GP	§ HPC-100-VP	§ HPC-100-TP	206	1	1.001	2.4409 62	.6299 16
		HPC-100-TPB	206	1	1.001	2.4457 —	.6299 16
		HPC-100-TPD ①	206	1	1.001	2.4409 62	.6299 16
§ HPC-102-GP	§ HPC-102-VP	§ HPC-102-TP2	207	1 1/8	1.126	2.8346 72	.6693 17
		HPC-103-TP2	207	1 1/4	1.251	2.8346 72	.6693 17

① DELRIN SHIELD INCLUDED.

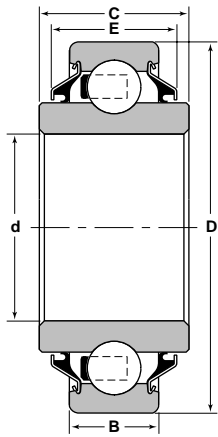
§ NOT NECESSARILY A STOCK ITEM – CHECK FOR AVAILABILITY

**HP Type—Hex Bore
Cylindrical Re-lubricatable**

Bearing Number with			Basic Outer Ring	Hex Bore		Outside Diameter D	Bore d
Vanguard Wide Single Lip Seal	Vanguard Wide Double Lip Seal	Vanguard Wide Triple Lip Seal		Shaft Size	Across Flats		
Inch/mm							
		§ HPC-100-TR	206	1	1.001	2.4409 62	.7087 18
		§ HPC-103-TR2	207	1 1/4	1.251	2.8346 72	.7480 19

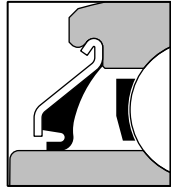
§ NOT NECESSARILY A STOCK ITEM – CHECK FOR AVAILABILITY

HP Type—Hex Bore Cylindrical Pre-lubricated

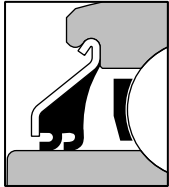


CYLINDRICAL O.D.
PRELUBRICATED

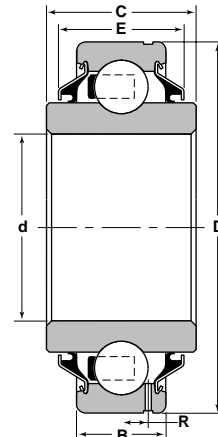
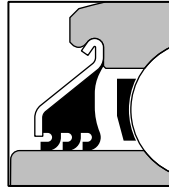
VANGUARD® "G" SEAL
SINGLE LIP



VANGUARD® "V" SEAL
DOUBLE LIP

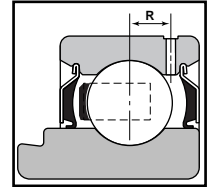


VANGUARD® "T" SEAL
TRIPLE LIP



CYLINDRICAL O.D.
RELUBRICATABLE

RELUBE
DIMENSION



C	D	E	Basic Load Ratings	
			Dynamic C	Static C ₀
Inch			lbs/N	
.8250	1.134	.760	2880 12790	1480 6580
.8250	1.134	.760	2880 12790	1480 6580
1.0000	1.331	.787	3150 14010	1760 7830
1.0000	1.331	.787	3150 14010	1760 7830
.9449	1.589	.876	4370 19450	2530 11260
.9449	1.589	.876	4370 19450	2530 11260
1.0600	1.589	1.060	4370 19450	2530 11260
1.4844	1.847	.912	5770 25670	3440 15300
1.4844	1.847	.912	5770 25670	3440 15300

① DELRIN SHIELD INCLUDED.

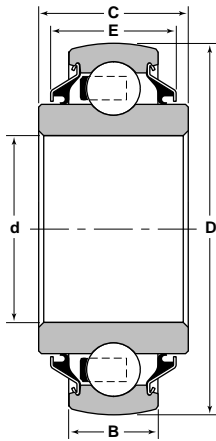
§ NOT NECESSARILY A STOCK ITEM – CHECK FOR AVAILABILITY

HP Type—Hex Bore Cylindrical Re-lubricatable

C	D	E	R	Basic Load Ratings	
				Dynamic C	Static C ₀
Inch				lbs/N	
.9449	1.589	.876	.190	4370 19450	2530 11260
1.4844	1.847	.912	.202	5770 25670	3440 15300

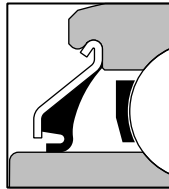
§ NOT NECESSARILY A STOCK ITEM – CHECK FOR AVAILABILITY

**HP Type—Hex Bore
Spherical Pre-lubricated**

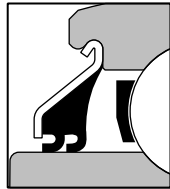


SPHERICAL O.D.
PRELUBRICATED

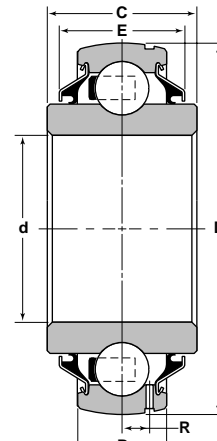
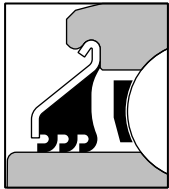
VANGUARD® "G" SEAL
SINGLE LIP



VANGUARD® "V" SEAL
DOUBLE LIP

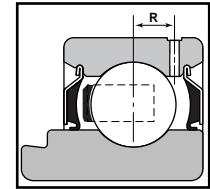


VANGUARD® "T" SEAL
TRIPLE LIP



SPHERICAL O.D.
RELUBRICATABLE

RELUBE
DIMENSION



Bearing Number with			Basic Outer Ring	Hex Bore		Outside Diameter D	Bore d
Vanguard Wide Single Lip Seal	Vanguard Wide Double Lip Seal	Vanguard Wide Triple Lip Seal		Shaft Size	Across Flats		
					Inch/mm		
§ HPS-010-GP			204	5/8	.626	1.8504 47	.5512 14
§ HPS-011-GP			204	11/16	.688	1.8504 47	.5512 14
HPS-011-GPA			204	11/16	.688	1.8504 47	.5512 14
§ HPS-012-GP	§ HPS-012-VP		205	3/4	.751	2.0472 52	.5906 15
HPS-014-GP	§ HPS-014-VP	§ HPS-014-TP	205	7/8	.876	2.0472 52	.5906 15
HPS-100-GP	§ HPS-100-VP	§ HPS-100-TP	206	1	1.001	2.4409 62	.6299 16
		HPS-100-TPD ①	206	1	1.001	2.4409 62	.6299 16
§ HPS-102-GP	HPS-102-VP		207	1 1/8	1.126	2.8346 72	.6693 17
HPS-104-GP		HPS-104-TP	208	1 1/4	1.251	3.1496 80	.7087 18
HPS-106-GP			208	1 3/8	1.376	3.1496 80	.8268 21
HPS-108-GPA			209	1 1/2	1.501	3.3465 85	.8661 22

① DELRIN SHIELD INCLUDED.

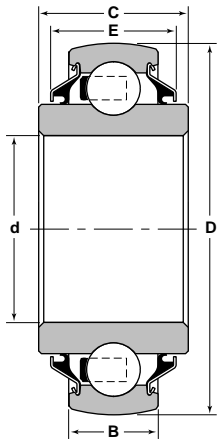
§ NOT NECESSARILY A STOCK ITEM – CHECK FOR AVAILABILITY

**HP Type—Hex Bore
Spherical Re-lubricatable**

Bearing Number with			Basic Outer Ring	Hex Bore		Outside Diameter D	Bore d
Vanguard Wide Single Lip Seal	Vanguard Wide Double Lip Seal	Vanguard Wide Triple Lip Seal		Shaft Size	Across Flats		
					Inch/mm		
		§ HPS-014-TR	205	7/8	.876	2.0472 52	.5906 15
§ HPS-100-GR		HPS-100-TR	206	1	1.001	2.4409 62	.7087 18
HPS-102-GR	HPS-102-VR	§ HPS-102-TR	207	1 1/8	1.126	2.8346 72	.7480 19
§ HPS-104-GR		§ HPS-104-TR	208	1 1/4	1.251	3.1496 80	.8661 22

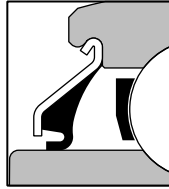
§ NOT NECESSARILY A STOCK ITEM – CHECK FOR AVAILABILITY

HP Type—Hex Bore Spherical Pre-lubricated

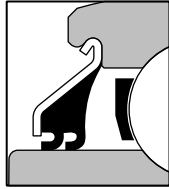


SPHERICAL O.D.
PRELUBRICATED

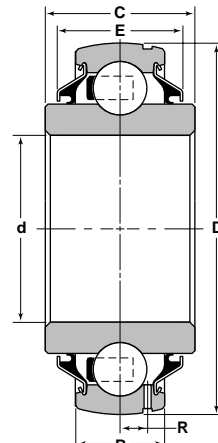
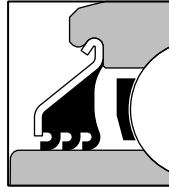
VANGUARD® "G" SEAL
SINGLE LIP



VANGUARD® "V" SEAL
DOUBLE LIP

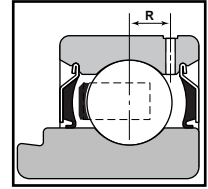


VANGUARD® "T" SEAL
TRIPLE LIP



SPHERICAL O.D.
RELUBRICATABLE

RELUBE
DIMENSION



C	D	E	Basic Load Ratings	
			Dynamic C	Static C ₀
Inch			lbs/N	
.8250	1.134	.760	2880 12790	1480 6580
.8250	1.134	.760	2880 12790	1480 6580
.8250	1.134	.760	2880 12790	1480 6580
1.0000	1.331	.787	3150 14010	1760 7830
1.0000	1.331	.780	3150 14010	1760 7830
.9449	1.589	.876	4370 19450	2530 11260
1.0600	1.583	1.060	4370 19450	2530 11260
1.4844	1.847	.912	5770 25670	3440 15300
1.4375	2.084	1.000	6540 29110	4020 17900
1.4375	2.084	.992	6540 29110	4020 17900
1.1811	2.280	1.102	7020 31240	4570 20320

① DELRIN SHIELD INCLUDED.

§ NOT NECESSARILY A STOCK ITEM – CHECK FOR AVAILABILITY

HP Type—Hex Bore Spherical Re-lubricatable

C	D	E	R	Basic Load Ratings	
				Dynamic C	Static C ₀
Inch				lbs/N	
1.0000	1.331	.688	.152	3150 14010	1760 7830
.9449	1.589	.876	.190	4370 19450	2530 11260
1.4844	1.847	.912	.202	5770 25670	3440 15300
1.4375	2.084	1.000	.224	6540 29110	4020 17900

§ NOT NECESSARILY A STOCK ITEM – CHECK FOR AVAILABILITY

Adapter & Hex Bore Bearing Specials

Bearing Number	Bore	Outside Diameter	Width	Special Features
	d	D	W	
Inch/mm				
§ NPC-008-RPAC	.5000	1.5738 40	.7500	Basic NPC-008-RPC with Seal on Collar Side Only.
§ HPC-011-GPB	.6880	1.8504 47	.8250	Basic HPC-011-GP with One Single-Lip Seal.
§ HPS-011-GPA	.6950	1.8504 47	.8250	Basic HPS-011-GP with Special .6950 Bore.
§ HEC-014-GP	.8751	2.0472 52	1.0000	Basic HPC-014-GP Economy Bearing Unground.
§ NPC-014-FPC	.8751	2.0472 52	1.2188	Basic NPC-014-RPC with Special "F" Seal.
§ HPC-100-GPA	.9975	2.4409 62	.9449	Basic HPC-100-GP with Special .9975 Bore.
HPC-103-GP2A	.9975	2.4409 62	.9843	Basic HPC-100-GP with Special .9975 Bore.
§ NPC-100-FPC	1.0001	2.0472 52	1.2188	Basic NPC-100-RPC with Special "F" Seal.
§ NPC-100-RPA	1.0001	2.0472 52	.8437	Basic NPC-100-RP with No Seal on Collar Side.
§ NPS-100-RPCF2	1.0001	3.7500 —	1.2188	Basic NPS-100-RPC, and 2-Bolt (52MST) Flanges.
§ NPS-100-RPNCF3	1.0001	3.7500 —	1.2188	Basic NPS-100-RPC, and 3-Bolt (52MS) Flanges.
§ NPS-100-RRA	1.0001	2.0472 52	.8437	Basic NPS-100-RR with Oil Hole on Opposite Side.
HPC-102-GPE	1.1260	2.8346 72	.9843	Basic HPC-102-GP with Special .9843 Width.
§ HPS-102GPA	1.1260	2.8346 72	.9843	Basic HPS-102-GP with Special .9843 I.R. Width.
WPC-102-C	1.1251	2.8346 72	1.9688	Basic WPS-102-C with 1.1251 Bore and Cylindrical O.D.
HPS-103-GP2	1.2510	2.8346 72	1.4844	Basic HPS-103-GP with Special 1.2510 Bore.
HPS-103-GP2A	1.2510	2.8346 72	.912	Basic HPS-103-GP with Special 1.2510 Bore.
HPS-103-TP2	1.2510	2.8346 72	1.4844	Basic HPS-103-GP2 with Triple-Lip Seal.
§ NPC-103-RP2A	1.2510	2.4409 62	.9375	Basic NPC-103-RP with No Seal on the Collar Side.
§ HPC-104-GPA	1.2510	3.1496 80	1.4375	Basic HPC-104-GP with 9-½ Ball Complement.
HPC-104-TPA	1.2510	3.1496 80	1.4375	Basic HPC-104-GP with Triple-Lip Seal.
HPS-104-TRA	1.2510	3.1496 80	1.4375	Basic HPC-104-GP with Triple-Lip Seal.
HPS-104-TRB	1.2510	3.1496 80	1.4375	Basic HPC-104-GP with Triple-Lip Seal.
WPS-106-GPEC	1.3751	2.8346 72	2.0156	Basic WPS-106-GPC with Carburized I.R.
§ NPS-107-RP2C	1.5001	2.8346 72	1.5938	Basic NPS-107-RPC with Special 1.5938 Overall Width, 1.595 Inner Ring, and .7120 Outer Ring Width.
§ WPS-107-GPA	1.4376	2.8346 72	1.4840	Basic WPS-107-GP with Single-Lip Seal on Collar Side.
§ WPS-107-GRCX	1.4376	2.8346 72	2.0156	Basic WPS-107-GRC with Class 0 Radial Clearance of .0002-.0008.
WPS-107-GTRAC	1.4376	2.8346 72	2.0156	Basic WPS-107-GRC with Triple-Lip Seal on Re-lube Side and Single-Lip on Opposite Side.

CONTACT YOUR NTN SALES REPRESENTATIVE FOR FURTHER INFORMATION ON SPECIALS.

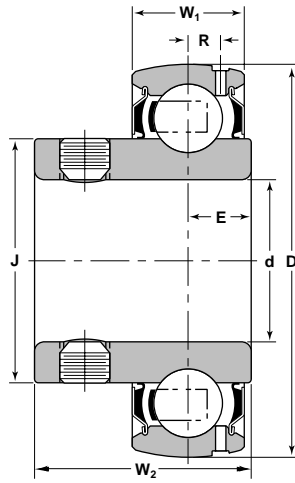
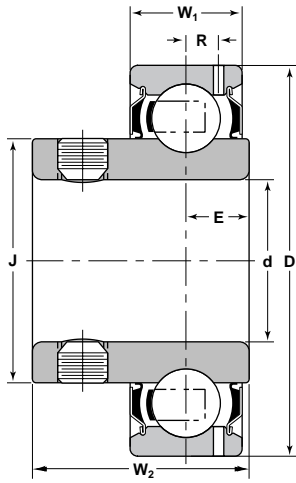
§ NOT NECESSARILY A STOCK ITEM – CHECK FOR AVAILABILITY

Adapter & Hex Bore Bearing Specials

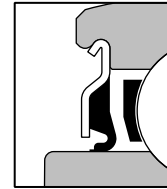
Bearing Number	Bore	Outside Diameter	Width	Special Features
	d	D	W	
Inch/mm				
HPS-108-GPB	1.5010	3.5433 90	1.1811	Basic HPS-108-GP with Special 3.5433 O.D.
HPS-108-GPH	1.5010	3.3465 85	1.1811	Basic HPS-108-GP with Special .7480 O.R. Width.
§ WPS-109-GPA	1.5626	3.1496 80	1.6875	Basic WPS-109-GP with One Single-Lip Seal.
§ HPS-112-TRA	1.7500	3.9370 100	2.1880	Basic HPS-112-GR with Triple-Lip Seal.
WPCH-114-C	1.8750	4.3307 110	2.6250	Basic WPSH-114-C with Cylindrical O.D.
§ NPC-115-GYPNC	1.9376	3.5433 90	1.7188	Basic NPC-115-RPC with Special 1.7188 Width.

CONTACT YOUR NTN SALES REPRESENTATIVE FOR FURTHER INFORMATION ON SPECIALS.
 § NOT NECESSARILY A STOCK ITEM – CHECK FOR AVAILABILITY

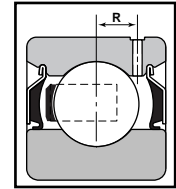
SNP—Narrow Set Screw Adapter Bearings



VANGUARD® "R" SEAL SINGLE LIP



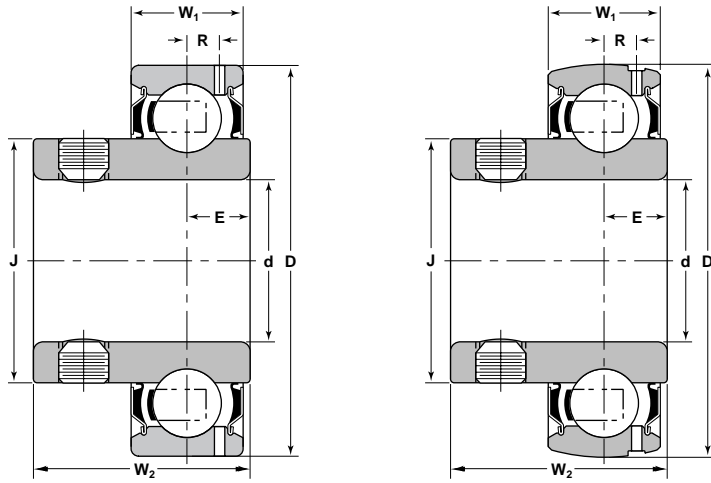
RELUBE DIMENSION



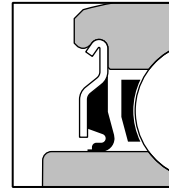
Bearing Number			Basic Outer Ring	Shaft Size B	Outside Diameter D	Ring Widths	
Spherical Relube	Cylindrical Relube	Spherical Prelube				Inner W ₂	Outer W ₁
Inch/mm							
SNPS-008-RR		§ SNPS-008-RP	203	1/2	1.5748 40	.9375	.5118
SNPS-010-RR	SNPC-010-RR		203	5/8	1.5748 40	.9375	.5118
SNPS-012-RR		§ SNPS-012-RP	204	3/4	1.8504 47	1.0625	.5906
SNPS-20-RR			204	20	1.8504 47	1.0625	.5906
SNPS-014-RR			205	7/8	2.0472 52	1.1909	.5906
SNPS-015-RR			205	15/16	2.0472 52	1.1909	.5906
SNPS-100-RR			205	1	2.0472 52	1.1909	.5906
SNPS-25-RR			205	25	2.0472 52	1.1909	.5906
SNPS-102-RR			206	1 1/8	2.4409 62	1.2810	.7087
SNPS-103-RR			206	1 3/16	2.4409 62	1.2810	.7087
SNPS-103-RR2		§ SNPS-103-RP2	206	1 1/4	2.4409 62	1.2810	.7087
SNPS-30-RR			206	30	2.4409 62	1.2810	.7087
SNPS-104-RR			207	1 1/4	2.8346 72	1.4440	.7480
SNPS-106-RR			207	1 3/8	2.8346 72	1.4440	.7480
SNPS-107-RR			207	1 7/16	2.8346 72	1.4440	.7480
SNPS-35-RR			207	35	2.8346 72	1.4440	.7480
SNPS-108-RR			208	1 1/2	3.1496 80	1.5380	.8661
SNPS-40-RR			208	40	3.1496 80	1.5380	.8661

§ NOT NECESSARILY A STOCK ITEM – CHECK FOR AVAILABILITY

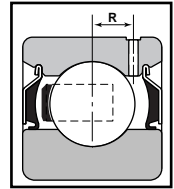
SNP—Narrow Set Screw Adapter Bearings



VANGUARD® "R" SEAL SINGLE LIP

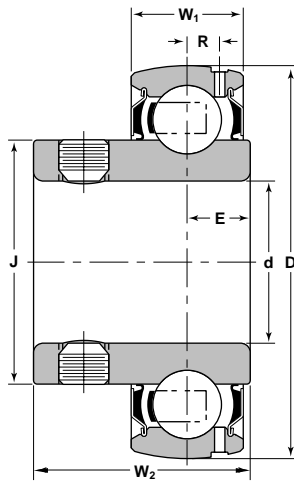
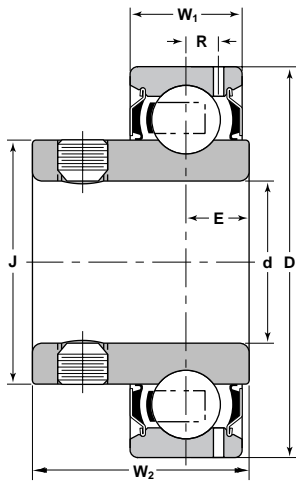


RELUBE DIMENSION

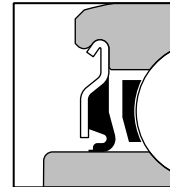


E	G	LE	Basic Load Ratings	
			Dynamic C	Static C ₀
Inch			lbs/N	
.313	.957	.126	2150 9550	1070 4760
.313	.957	.126	2150 9550	1070 4760
.350	1.134	.152	2880 12790	1480 6580
.350	1.134	.152	2880 12790	1480 6580
.348	1.331	.162	3150 14010	1760 7830
.348	1.331	.162	3150 14010	1760 7830
.348	1.331	.162	3150 14010	1760 7830
.348	1.331	.162	3150 14010	1760 7830
.380	1.589	.190	4370 19450	2530 11260
.380	1.589	.190	4370 19450	2530 11260
.380	1.589	.190	4370 19450	2530 11260
.380	1.589	.190	4370 19450	2530 11260
.427	1.847	.202	5770 25670	3440 15300
.427	1.847	.202	5770 25670	3440 15300
.427	1.847	.202	5770 25670	3440 15300
.427	1.847	.202	5770 25670	3440 15300
.458	2.084	.224	6540 29110	4020 17900
.458	2.084	.224	6540 29110	4020 17900

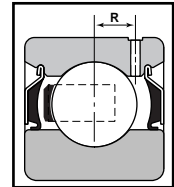
SNP—Set Screw Bearing Specials



VANGUARD[®] "R" SEAL SINGLE LIP



RELUBE DIMENSION



Bearing Number	Bore	Outside Diameter	Width	Special Features
	d	D	W	
Inch/mm				
§ SNPS-008-RRA	1/2	1.5748 40	.9375	Basic SNPS-008-RR with Relube Hole on Opposite Side.
§ SNPS-010-RRA	5/8	1.5748 40	.9375	Basic SNPS-010-RR with Relube Hole on Opposite Side.
§ SNPS-012-RRB	3/4	1.8504 47	1.0625	Basic SNPS-012-RR with Relube Hole on Opposite Side.
§ SNPS-100-RRA	1	2.0472 52	1.1909	Basic SNPS-100-RR with Special Shell "Aeroshell #22" Lubrication.

CONTACT YOUR NTN SALES REPRESENTATIVE FOR FURTHER INFORMATION ON SPECIALS.

§ NOT NECESSARILY A STOCK ITEM – CHECK FOR AVAILABILITY