

Agricultural Bearing Intro

Heavy Duty Disc Bearings

NTN-BCA® heavy duty disc bearings are equipped with rugged triple lip seals bonded to heavy gauge steel trash guard shields. These bearings are designed for applications which are exposed to severe contamination such as: Disc Harrows, Disc Hillers and Trenching Machinery. The shields are crimped into outer ring grooves having a saw tooth gripping (STG) surface which securely holds the seals in place.

The nylon case in disc bearings not only resists water, but also has the flexibility to tolerate misalignment. Specially selected bearing quality allow steel provides extra resistance to shock loads.

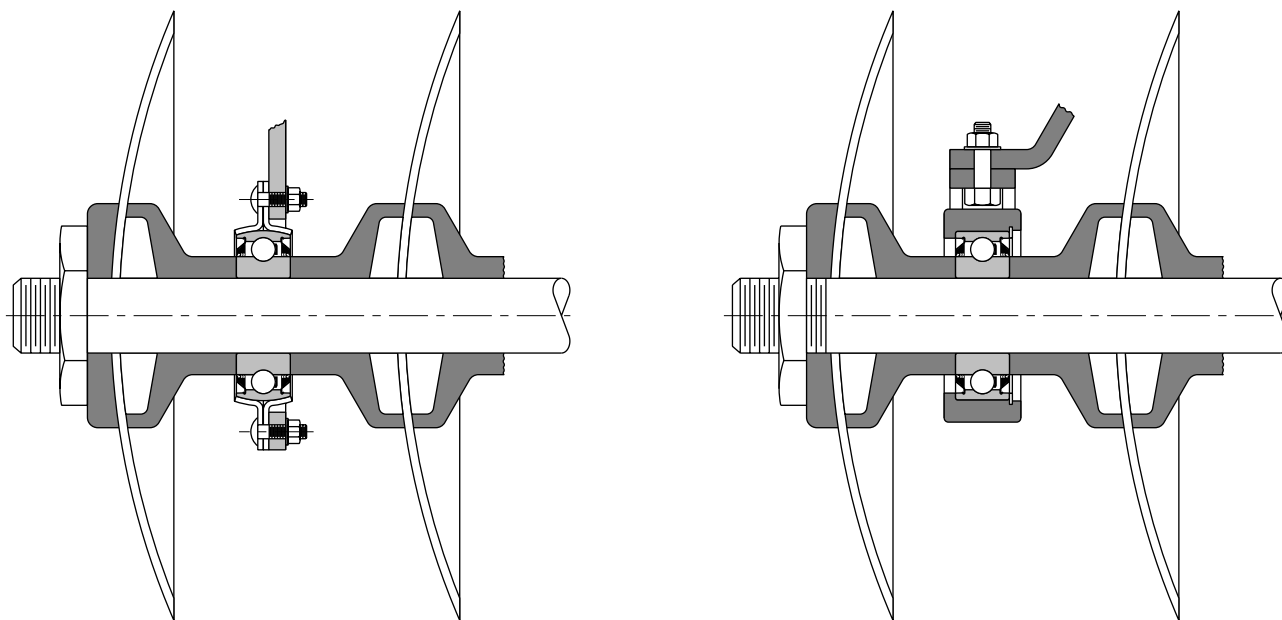
NTN-BCA® disc bearings are available with spherical or cylindrical outside diameters and with bores designed to accommodate either round or square shafting. Both re-lubricatable and non-re-lubricatable types are available.

Heavy duty disc bearings are sealed on both sides by a rugged Vanguard "T" triple lip seal. This triple lip seal has an extra thick outer lip for greater protection and longer life. The heavy duty trash guard is chemically treated to resist pitting and corrosion. The thick ring sections of these bearings are well suited to resist shock loads.

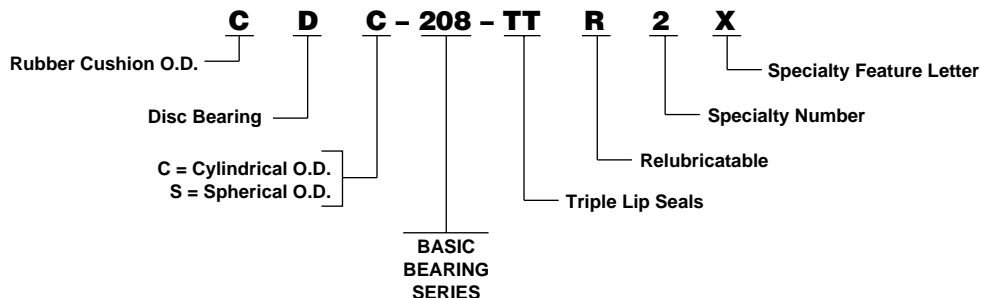
NTN-BCA® heavy duty disc bearings come in four styles: (see tables following)

1. Cylindrical – Round bore
2. Cylindrical – Square bore
3. Spherical O.D. – Round bore
4. Spherical O.D. – Square bore

Typical Disc Bearing Installations



Agricultural Numbering System



Agricultural Bearing Intro

Flanged Disc Units

Flanged disc harrow bearings units are integral assemblies specifically designed for the most severe tillage applications. Each configuration incorporates certain special dimensional attributes making the unit compatible in a variety of equipment designs. Inherent in most designs are two heavy gauge case hardened and zinc plated stampings which encapsulate the bearing with eight cold formed rivets for guaranteed integrity. Within the cavity two nitrile “O” rings are installed to exclude contaminants and provide a grease seal to ensure lubricant feeds directly into the bearing. The grease fitting is permanently retained in the stamping for easy access and maximum protection from the environment. The high performance NTN-BCA® disc bearing assembled into each unit has all the features detailed in the disc harrow bearing section. The complete unit provides the following beneficial application characteristics:

- Dynamic Alignment
- Positive Relubrication
- Close Clearance Shroud Protects Bearing
- Circumferentially Restrained Outer Ring
- High Performance NTN-BCA® Disc Harrow Bearing
- Plated Case Hardened Stampings
- Solid Rivet Retention of Stampings

CDS Series Rubber Mounted Disc Harrow Bearings

CDS series bearing assemblies consist of a heavy duty NTN-BCA® disc bearing and a special configuration separable rubber housing. These assemblies are designed for use in two-piece cast housings which when bolted together at mounting capture the bearing assembly in the appropriate position between each half. The extension on the rubber housing with the thru hole is intended to match up with a relubrication hole in one of the casting halves. Knurled surfaces on the O.D. of the outer ring are gripped by the rubber, which is compressed at mounting, to prevent outer ring movement thus assuring the relube hole in the outer ring stays in alignment with the rubber housing grease hole. This permits relubrication of the bearing through a grease fitting installed in the cast housing.

Cam Follower Bearings

NTN-BCA® Cam Follower bearings are designed as packaged units. Each unit includes a pre-lubricated bearing, seals, cam roller, and mounting stud, assembled and ready to install. In addition to substantial savings in installation time, these convenient units offer the important advantage of low initial cost.

Cam Followers are used principally on pick-up attachments for hay balers, forage harvesters, and combines. They are also suitable for use in roller type conveyors.

Cam Follower bearings are made to give outstanding performance under severe operating conditions. The thick-sectioned outer ring is case hardened to withstand the shock loads common to cam applications. The cam follower outside diameter is

slightly crowned to assure proper contact with the cam and to prevent corner-loading on the follower. A full complement of balls insures maximum load carrying capacity.

Each Cam Follower comes in one of seven different types. (see Type drawings, and the corresponding “Type” column in the table.)

Plunger Rollers

NTN-BCA® Plunger Rollers are pre-lubricated packaged units equipped with heavy duty seals and thick outer ring sections of hardened steel. Especially suitable for sliding heavy masses on rails, they find their principal application in hay baler plungers. An effective seal forms a triple barrier to exclude contaminants and to seal the lubricant within the bearing. This seal assures unusually long bearing life under the most severe conditions.

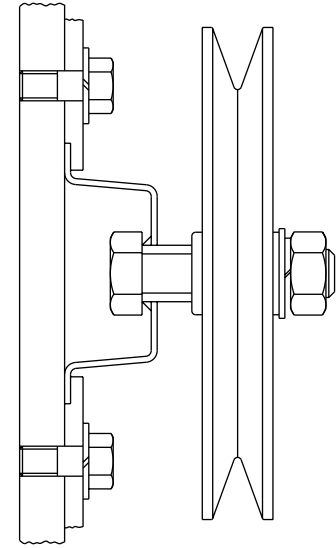
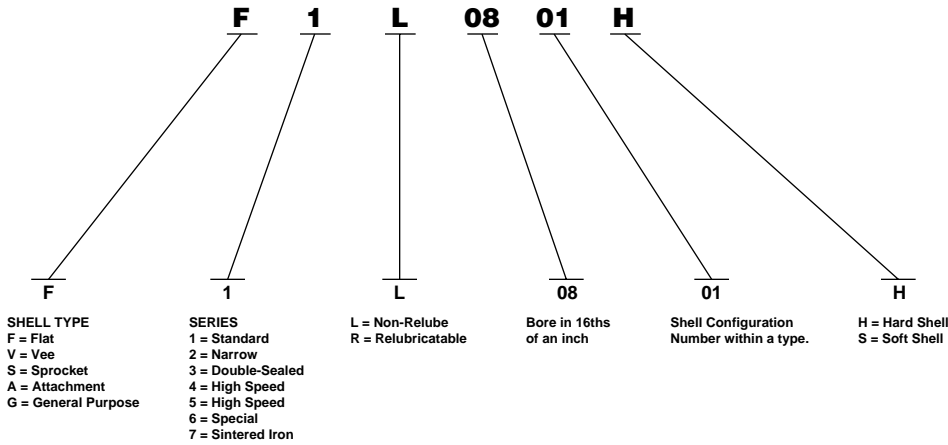
Each Plunger Roller comes in one of four different types. (see Type drawings, and the corresponding “Type” column in the table.)

Tine Bar Bearings

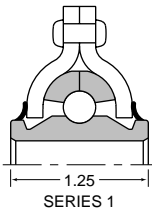
NTN-BCA® Tine Bar bearings are designed especially for use in hay rakes of the side delivery type. These bearings are constructed with hardened rings, a full complement of balls, and an integral stud. They have proved to be exceptionally durable under the severe service conditions encountered in hay raking operations. The synthetic rubber contact seal, an original NTN-BCA® development, exerts constant pressure on the shield regardless of bearing misalignment induced by operating conditions. This seal is very effective in preventing the escape of grease from the bearing and in preventing contaminants from entering the bearing. NTN-BCA® Tine Bar bearings are low cost, efficiently designed, extremely dependable package units and are used extensively by hay rake manufacturers.

Each Tine Bar Bearing comes in one of two different types. (see Type drawings, and the corresponding “Type” column in the table.)

Idler Pulleys Intro

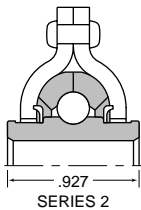


TYPICAL IDLER PULLEY INSTALLATION



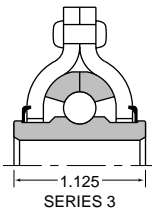
Series 1—Standard

Standard Series 1 inner ring width provides the necessary extension for most applications and eliminates the need for extra washers or spacers. Series 1 is available in all shell configurations and utilizes seals made of Buna N rubber. They are recommended as general purpose idlers.



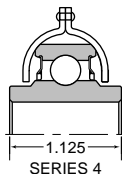
Series 2—Narrow

Narrow Series 2 is provided for those unusual cases that require an idler with a narrow inner ring. This series features internal seals made of tough, abrasion resistant plastic material which contact the idler shell and prevent entry of contaminants and foreign material.



Series 3—Double Sealed

Double Sealed Series 3 idlers have excellent sealing capacity provided by the two external seals. A tough, abrasion resistant plastic shield contacts the idler shell and protects the inner seal from dirt, foreign material and wrappage. The inner plastic seal prevents the entry of contaminants and retains the grease required for proper lubrication. This series is available in all shell configurations and is recommended for applications where the operating conditions are highly contaminating.



Series 4—High Speed

High Speed Series 4 idlers are provided for those applications that require a precision bearing for speeds greater than 1000 RPM. The series 4 bearing features Vanguard[®] "R" seals and a single piece fibron cage, plus fully ground races. Series 4 idlers are available in all of the shell configurations.

Idler Pulleys Intro

NTN-BCA® idlers are available in various shell configurations and sizes for use in combines, forage harvesters, hay balers, and many other farm implements.

Series 1, 2, and 3 idlers are limited to speeds under 1000 RPM and have the following features:

- Full complement of balls
- Heavy outer ring sections and stamped shells
- Relube or non-relubrication
- $\frac{7}{16}$ ", $\frac{1}{2}$ " or $\frac{5}{8}$ " bores
- Special sealing

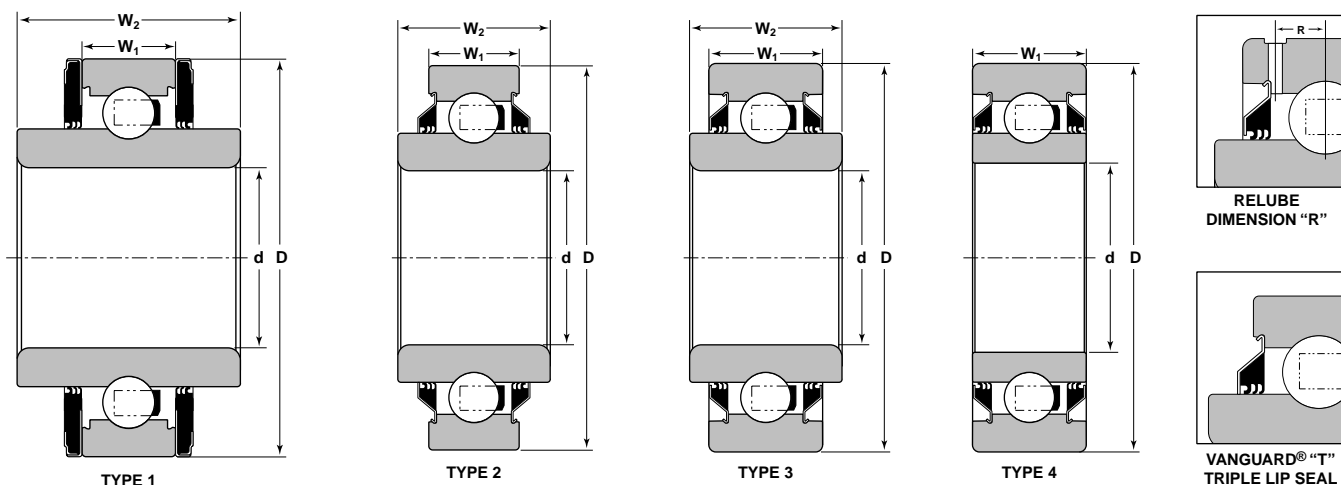
Series 4 idlers are used for higher speed applications and have the following features:

- Fibron cages
- Precision ground raceways
- Non-relubrication
- $\frac{7}{16}$ ", $\frac{1}{2}$ " or $\frac{5}{8}$ " bores
- Vanguard® single lip seals

Pulleys:

Flat	Sprocket	General Purpose
Vee	Attachment	Misc. Type

Heavy Duty Disc Bearings Cylindrical—Round Bore



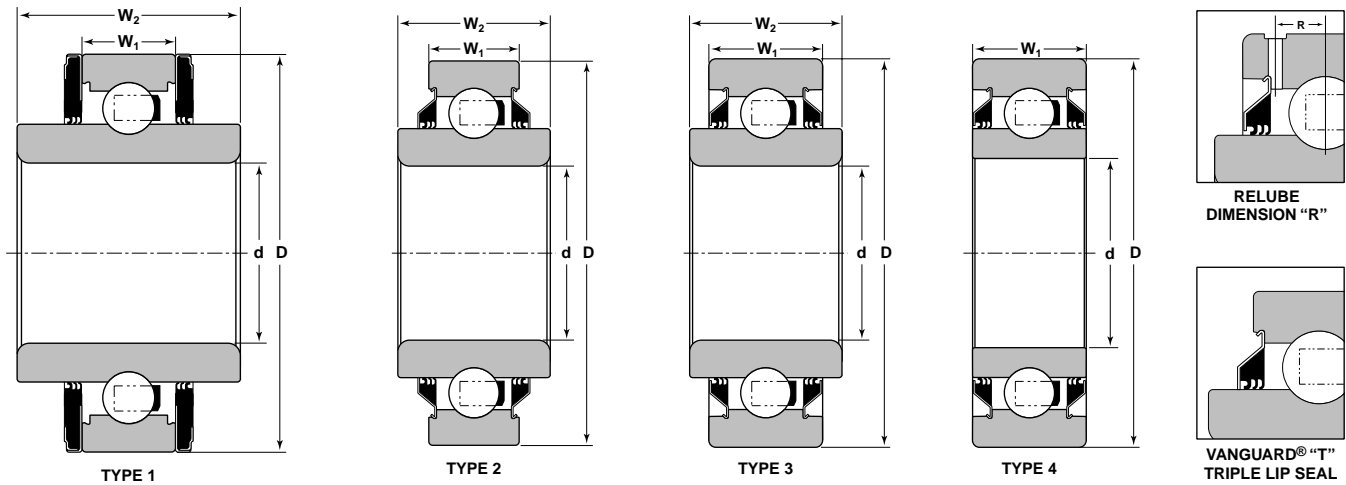
Bearing Number		Type	Round Bore	Outside Diameter	Ring Width		Relube Dimension R
Pre-lubricated	Relubricated		d	D	Inner W ₂	Outer W ₁	
			Inch		Inch/mm		
§ DC206T ①		2	1.1807 30	2.4409 62	.9449	.6299	—
	DC210TTR3	4	1.4060 90	3.5433	1.1875	1.1875	.248
DC208TT10		2	1.5000 80	3.1496	1.6875	.8268	—
DC210TT3A		4	1.5200 90	3.5433	1.1880	1.1880	—
DC208TTA		3	1.5250 80	3.1496	1.4375	1.1875	—
	§ DC209TTR10	3	1.7690 85	3.3465	1.6870	1.0930	.248
	DC211TTR21	3	1.7750 100	3.9370	1.7500	1.3125	.299
DC210 ②		1	1.9375 90	3.5433	1.9375	.7874	—
DC210TT		1	1.9375 90	3.5433	1.9375	1.3550	—
§ DC210TTA		3	1.9375 90	3.5433	1.9375	1.3550	—
DC210TT2		4	1.9375 90	3.5433	1.1875	1.1875	—
DC210TT3A		4	1.9375 90	3.5433	1.1875	1.1875	—
	DC210TTR7	3	1.9375 90	3.5433	1.9370	1.1880	.248
	DC210TTR9	2	1.9402 90	3.5433	1.4380	.9060	.248
DC211TT2	DC211TTR2	4	2.1874 100	3.9370	1.3125	1.3125	.299
	DC214TT2	1	2.6875 125	4.9213	2.6875	.9449	—
	DC214TTR3	3	2.6875 125	4.9213	2.6875	1.5625	.367
	DC214TTR2	4	2.7553 125	4.9213	1.5625	1.5625	.367
	§ DC214TTR2A	3	2.7580 125	4.9213	2.0000	1.5625	.367

① SEAL ON ONE SIDE ONLY

② OPEN BEARING WITHOUT SEALS

§ NOT NECESSARILY A STOCK ITEM – CHECK FOR AVAILABILITY

Heavy Duty Disc Bearings Cylindrical—Square Bore

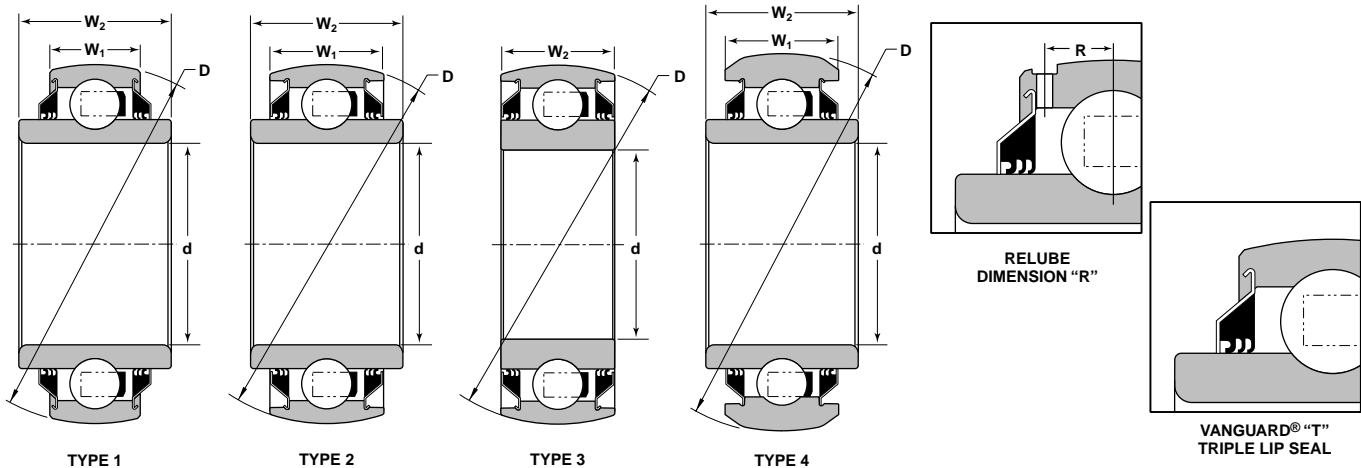


Bearing Number		Type	Square Bore	Outside Diameter	Ring Width		Relube Dimension R
Pre-lubricated	Relubricated		d	D	Inner W ₂	Outer W ₁	
			Inch				
§ DC208-2 ②		1	1	3.1496 80	1.6875	.7087	—
§ DC208TT2B		3	1	3.1496 80	1.6875	1.2790	—
DC208TT6		2	1	3.1496 80	1.4375	.7087	—
DC208 ②		1	1 1/8	3.1496 80	1.6875	.7087	—
§ DC208TTB		3	1 1/8	3.1496 80	1.6875	1.2790	—
DC208TT		3	1 1/8	3.1496 80	1.6875	1.2790	—
DC208TT5		2	1 1/8	3.1496 80	1.4375	.7087	—
DC208TT8		3	1 1/8	3.1496 80	1.4375	1.1875	—
	DC208TTR17	3	1 1/8	3.3755	1.4375	1.1880	.266
DC210TT4	DC210TTR4	4	1 1/8	3.5433 90	1.1875	1.1875	.248
	DC209TTR8	2	1 1/4	3.3465 85	1.4375	.8861	.248
DC211TT3	DC211TTR3	4	1 1/2	3.9370 100	1.3125	1.3125	.277
	DC211TTR3E	3	1 1/2	3.9370 100	1.7500	1.3125	.277
	DC211TTR4	3	1 1/2	3.9370 100	1.7500	1.3125	.277
DC211TT5		3	1 1/2	4.0000 —	1.7500	1.4380	—
DC212TT	§ DC212TTR	3	1 3/4	4.3307 110	2.0000	1.5060	.299
	DC212TTRA	3	1 3/4	4.3307 110	2.0000	1.5060	.299
	DC212TTR2	2	1 3/4	4.3307 110	2.0000	1.0630	.299
	DC216TTR2	2	2 1/4	5.5118 140	2.5000	1.1811	.357
	DC216TTR3	2	2 1/4	5.5118 140	2.5000	1.1811	.357

② OPEN BEARING WITHOUT SEALS

§ NOT NECESSARILY A STOCK ITEM – CHECK FOR AVAILABILITY

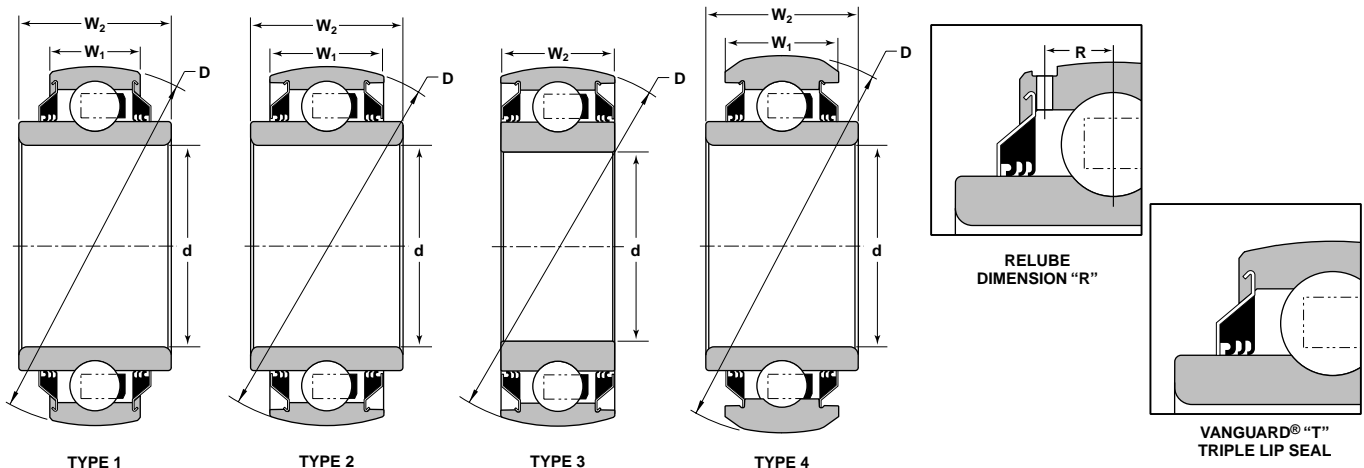
Heavy Duty Disc Bearings Spherical Outside Diameter—Round Bore



Bearing Number		Type	Round Bore	Outside Diameter	Ring Width		Relube Dimension R
Pre-lubricated	Relubricated		d	D	Inner W ₂	Outer W ₁	
			Inch	Inch/mm			
DS208TT14		4	.8820	3.4380	1.4375	1.1880	—
DS208TT4		3	1.1875	3.1496 80	1.1875	1.1875	—
DS208TT7		1	1.1875	3.1496 80	1.1875	.7087	—
DS208TT2A		2	1.5000	3.1496 80	1.6875	1.1875	—
§ DS208T3 ①		4	1.5250	3.4430	1.4375	1.1880	—
DS208TT3		4	1.5250	3.4430	1.4375	1.1880	—
DS209TT4	DS209TTR4	3	1.5250	3.3465 85	1.1875	1.1875	.248
§ DS209TT4A		1	1.5250	3.3465 85	1.1875	.7480	—
DS209TT6		4	1.5250	3.4430	1.1875	1.1875	—
DS209TT6S		4	1.5250	3.4430	1.1875	1.1875	—
DS209TT6M		4	1.5250	3.4430	1.1875	1.1875	—
	DS209TTR6JA	4	1.5250	3.4430	1.1875	1.1875	—
	DS209TTR6P	4	1.5250	3.4925	1.6875	1.2510	—
	§ DS209TTR9A	4	1.5250	3.4370	1.6870	1.2500	—
	DS209TTR12	1	1.7645	3.3465 85	1.6870	1.0420	—
	§ DS211TTR10A	4	1.7645	3.9710 100	2.1845	1.3095	—
	§ DS209TTR11B	4	1.7690	3.4370	1.6870	1.2500	—
DS209TT2	DS209TTR2	3	1.7712	3.3465 85	1.1875	1.1875	.248
	DS209TTR10	1	1.7710	3.3465 85	1.4375	.8661	.248
	DS210TTR5A	3	1.7750	3.5433 90	1.1875	1.1875	.248
DS210TT5	DS210TTR5R	3	1.7750	3.5433 90	1.1875	1.1875	.248
	DS211TTR13	1	1.7750	3.9370 100	1.3125	.9843	.277
§ DS211TT13A		1	1.7750	3.9370 100	1.3125	.8265	—
	§ DS211TTR21A	4	1.7750	3.9710	2.1870	1.3120	—

① SEAL ON ONE SIDE ONLY
 ② OPEN BEARING WITHOUT SEALS
 ③ CARTRIDGE SEAL
 § NOT NECESSARILY A STOCK ITEM – CHECK FOR AVAILABILITY

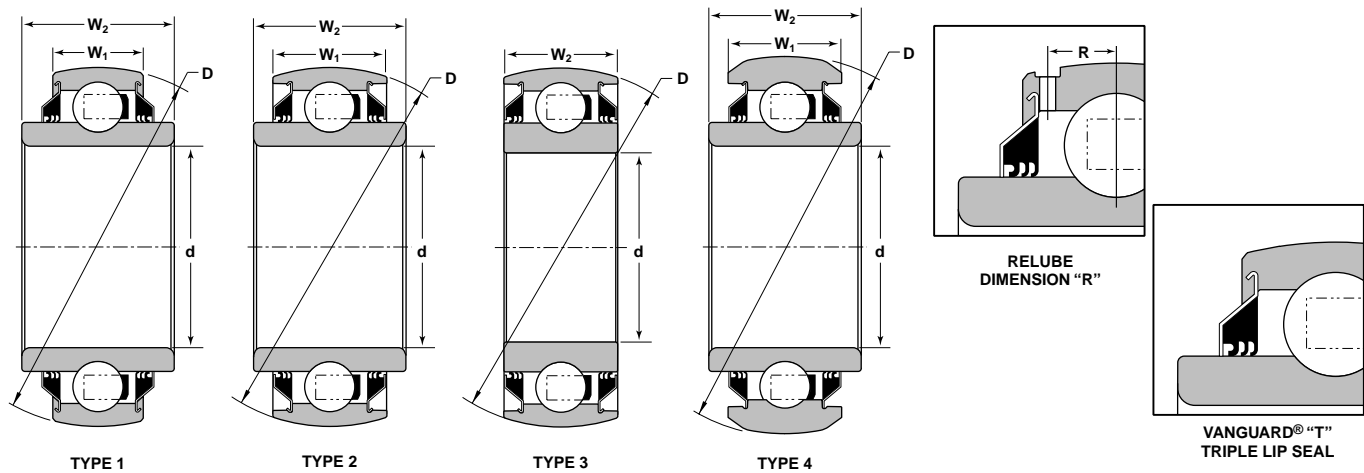
Heavy Duty Disc Bearings Spherical Outside Diameter—Round Bore Continued



Bearing Number		Type	Round Bore	Outside Diameter	Ring Width		Relube Dimension R
Pre-lubricated	Relubricated		d	D	Inner W ₂	Outer W ₁	
			Inch	Inch/mm			
	DS211TTR23	4	1.7750	3.9800	2.1250	1.3350	.166
DS210TT2	DS210TTR2	3	1.9375	3.5433	1.1875	1.1875	.248
DS210TT2B		3	1.9375	3.5433	1.1875	1.1875	.248
	§ DS211TTR3A	3	1.9374	3.9370	1.3155	1.3155	.292
	§ DS211TTR12 ②	4	1.9375	3.9710	2.1250	1.3120	—
	§ DS211TTR12A	4	1.9375	3.9710	2.1250	1.3120	—
	DS214TTR2	3	1.9375	4.9213	1.5625	1.5625	.377
	DS214TTR3	3	1.9375	4.9213	1.5625	1.5625	.377
	§ DS211TTR7A	4	1.9380	3.9710	2.1845	1.3120	.359
	DS211TTR14	1	2.0050	3.9370	1.3120	.9843	.277
	§ DS211TTR8	2	2.1874	3.9370	2.1870	1.4380	.330
	DS211TR8R	1	2.1874	3.9370	1.3125	.9843	.277
DS211TT2	DS211TTR2	3	2.1874	3.9370	1.3125	1.3125	.277
	§ DS211TTR11 ②	4	2.1875	3.9710	2.1870	1.3120	—
	§ DS211TTR11A	4	2.1874	3.9710	2.1870	1.3120	—
DS211TT4		4	2.1874	3.9370	2.1870	1.3120	—
	DS211TTR9	1	2.1880	3.9370	1.5625	.9843	.277
	DS214TTTRA	1	2.6875	4.9213	2.6875	1.1024	.367
	DS214TTR5	2	2.7553	4.9213	2.4380	1.5620	.377
DS214TT2		3	2.7580	4.9213	1.5625	1.5625	—
	DS216TTR3	1	3.0100	5.5118	2.5000	1.1811	.360

- ① SEAL ON ONE SIDE ONLY
- ② OPEN BEARING WITHOUT SEALS
- ③ CARTRIDGE SEAL
- § NOT NECESSARILY A STOCK ITEM – CHECK FOR AVAILABILITY

Heavy Duty Disc Bearings Spherical Outside Diameter—Square Bore

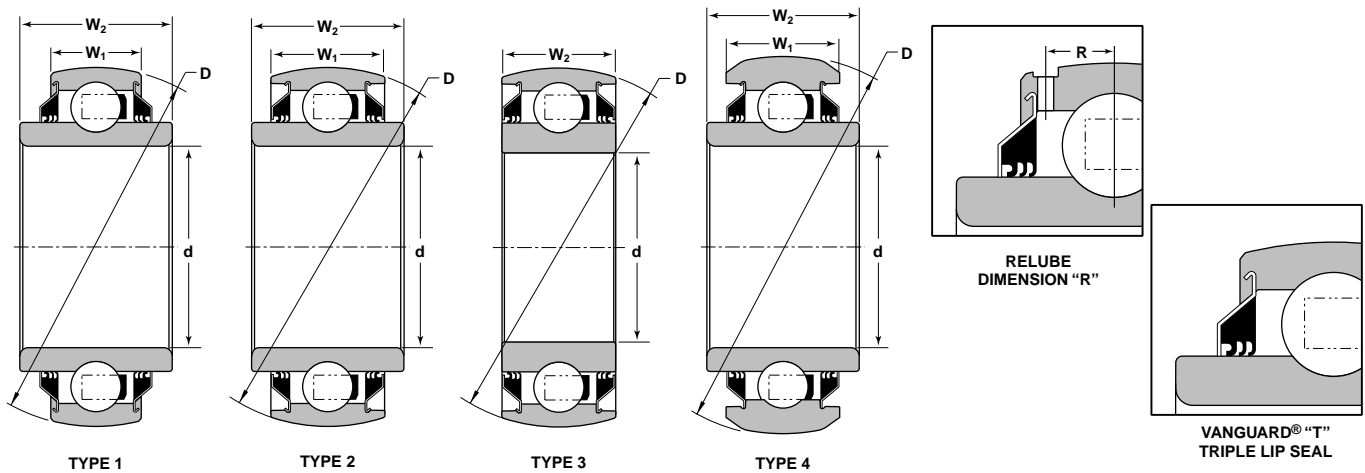


Bearing Number		Type	Square Bore	Outside Diameter	Ring Width		Relube Dimension R
Pre-lubricated	Relubricated		d	D	Inner W ₂	Outer W ₁	
			Inch/mm				
§ DS206GG		1	7/8	2.4409 62	.9449	.6299	—
DS208TT11		4	7/8	3.4430 —	1.4375	1.1875	—
§ DS208TT11A		4	7/8	3.4385 —	1.4375	1.1875	—
DS208TT13		1	7/8	3.1496 80	1.4375	.7087	—
§ DS208TT13B		1	7/8	3.1496 80	1.4375	.7087	—
§ DS209TT7K		4	1	3.4410 —	1.6870	1.3120	—
DS208TT6		1	1	3.1496 80	1.4375	.7087	—
	DS208TTR6	2	1	3.1496 80	1.4375	.9449	.224
DS208TT9		2	1	3.1496 80	1.4375	1.1875	—
DS208TT5		2	1 1/8	3.1496 80	1.4375	.7087	—
	DS208TTR5	2	1 1/8	3.1496 80	1.4375	.9449	.224
DS208TT8	DS208TTR8	2	1 1/8	3.1496 80	1.4375	1.1875	.224
	DS208TTR21	1	1 1/8	3.1496 80	1.4375	.8661	.224
DS208TT12		4	1 1/8	3.4430 —	1.4375	1.1875	—
DS208TT12A		4	1 1/8	3.4385 —	1.4375	1.1875	—
§ DS208TT12B		4	1 1/8	3.4430 —	1.4375	1.1875	—
§ DS209TT7M		4	1 1/8	3.4410 —	1.6870	1.3120	—
§ DS209TT7P		4	1 1/8	3.4410 —	1.4380	1.1880	—
	DS209TTR13	2	1 1/8	3.4370 —	1.6870	1.2500	.334
	DS209TTR13A	2	1 1/8	3.4370 —	1.6870	1.2500	.334
	§ DS209TTR15	2	1 1/8	3.4370 —	1.6870	1.2500	.334

⊗ CARTRIDGE SEAL

§ NOT NECESSARILY A STOCK ITEM – CHECK FOR AVAILABILITY

Heavy Duty Disc Bearings Spherical Outside Diameter—Square Bore Continued

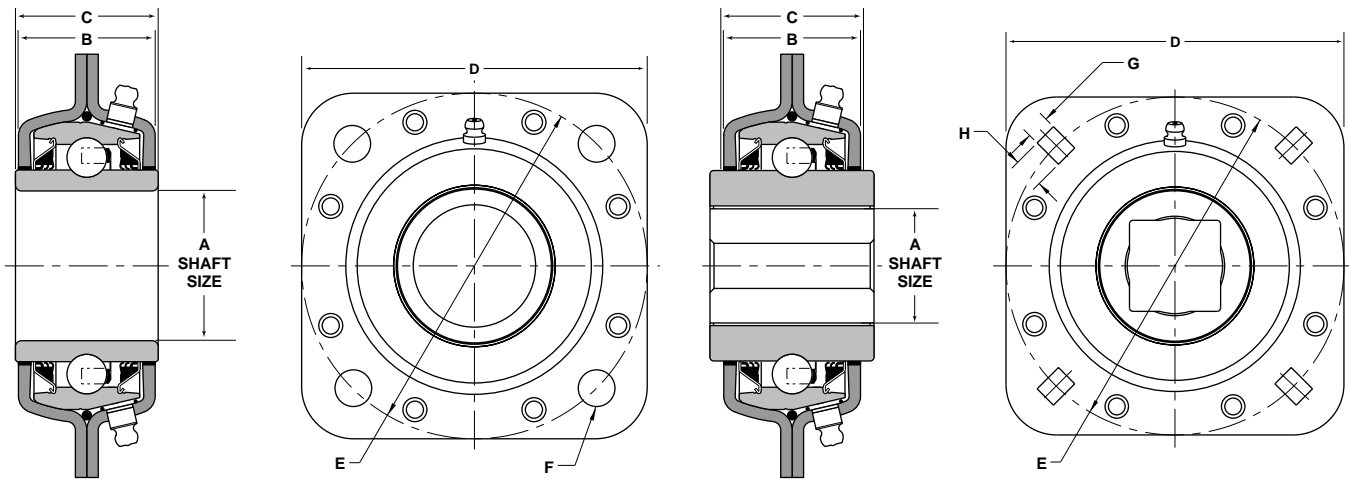


Bearing Number		Type	Square Bore	Outside Diameter	Ring Width		Relube Dimension R
Pre-lubricated	Relubricated		d	D	Inner W ₂	Outer W ₁	
			Inch/mm				
DS210TT4	DS210TTR4	3	1 1/8	3.5433 90	1.1875	1.1875	.248
DS211TT4A		3	1 1/8	3.5433 90	1.1875	1.1875	.248
DS210TT6		2	1 1/8	3.5433 90	1.4375	1.1875	—
	DS210TTR5	2	1 1/8	3.5433 90	1.7500	1.1875	.248
DS209TT5	DS209TTR5	2	1 1/4	3.3465 85	1.4375	1.1875	.248
	§ DS209TTR5B	2	1 1/4	3.3465 85	1.4375	1.1875	.248
§ DS209TT7		4	1 1/4	3.4430 —	1.4375	1.1875	—
§ DS209TT7J		4	1 1/4	3.4410 —	1.6870	1.3120	—
	DS209TTR8	1	1 1/4	3.3465 85	1.4375	.8661	.248
DS209TT8A	§ DS209TTR8A	1	1 1/4	3.3465 85	1.4375	.8661	.248
	§ DS209TTR14	4	1.2950	3.4370 —	1.6870	1.2500	—
DS211TT3	DS211TTR3	3	1 1/2	3.9370 100	1.3125	1.3125	.277
	§ DS211TTR3B	3	1 1/2	3.9370 100	1.3125	1.3125	.277
	DS211TTR20	2	1 1/2	3.9370 100	2.0000	1.4380	.330
	§ DS211TTR22	4	1 1/2	3.9370 100	2.0000	1.3120	.359
DS211TT6		4	1 1/2	4.1300 —	1.7500	1.4375	—
	§ DS211TTR24	4	1 5/8	3.9710 —	2.0000	1.3125	.359
	DS216TTR2	1	2 1/4	5.5118 140	2.5000	1.1811	.360

Ⓢ CARTRIDGE SEAL

§ NOT NECESSARILY A STOCK ITEM – CHECK FOR AVAILABILITY

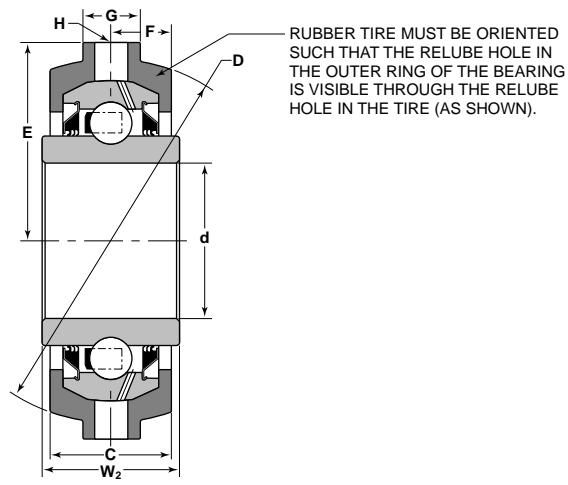
Flanged Disc Units



Bearing Number	Shaft Size	Housing Width	Inner Ring Width	Square	Bolt Circle Diameter	Bolt Hole Diameter	Bolt Hole Width	Bolt Hole Length
	A	B	C	D	E	F	G	H
Inch/mm								
FD209RJ	1 3/4 RD	1.6400	1.6870	5.0000	5.0000	.531	—	—
FD209RJA	1 3/4 RD	1.6400	1.6870	5.0000	5.0000	.531	—	—
FD209RE	1 1/2 RD	1.6400	1.6870	5.0000	5.0000	—	.531	.687
FD209RK	1 1/4 SQ	1.6400	1.6870	5.0000	5.0000	—	.531	.687
FD209RM	1 1/8 SQ	1.6400	1.6870	5.0000	5.0000	—	.531	.687
FD210R	1 1/8 SQ	1.7500	1.7500	5.0000	5.0000	.531	—	—
FD211RBA	2 3/16 RD	1.7990	2.1870	5.5000	5.5000	.531	—	—
FD211REA	1 3/4 RD	1.7990	2.1870	5.5000	5.5000	.531	—	—
FD211RJA	1 15/16 RDC	1.7990	2.1250	5.5000	5.5000	.531	—	—
FD211RKA	1 3/4 H	1.7990	2.1880	5.5000	5.5000	.531	—	—
§ FD211RKB	1 3/4 H	1.7990	2.1880	5.5000	5.5000	.531	—	—
FD211RM	1 1/2 SQ	1.7990	2.0000	5.5000	5.5000	—	.531	.687
FD211RP	40 SQ	1.7990	2.0060	5.5000	5.5000	.531	—	—

RD ROUND
 SQ SQUARE
 RDC ROUND with CAM
 H HEX
 § NOT NECESSARILY A STOCK ITEM – CHECK FOR AVAILABILITY

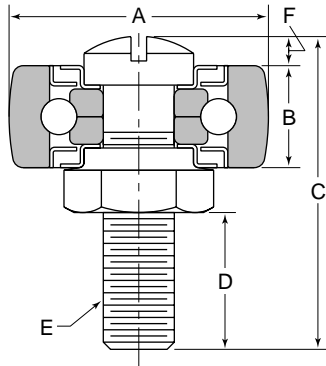
CDS Series Rubber Mounted Disc Harrow Bearings



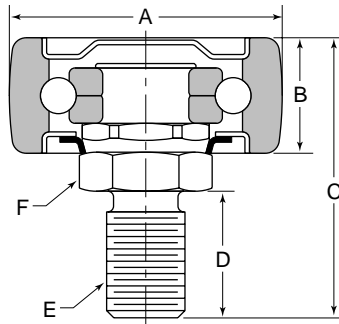
Size	Bore	Inner Ring Width	Housing Width	Housing O.D.	Housing Relube Hole Radius	Relube Hole Center Distance	Housing Relube Hole Width	Housing Relube Hole Diameter	Bearing Insert
	d	W ₂	C	D	E	F	G	H	
	Inch								
CDS209TTR6P	1.5000	1.6875	1.5650	4.0000	2.1520	.7800	.7500	.5000	DS209TTR6P
CDS211TTR23	1.7500	2.1250	1.7920	4.4380	2.3750	.8940	.7500	.5000	DS211TTR23
CDS211TTR25	1.7800	2.1250	1.7690	4.4380	2.3750	.8800	.7500	.5000	DS211TTR25

Cam Follower Types

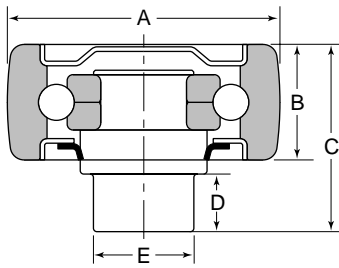
TYPE 2



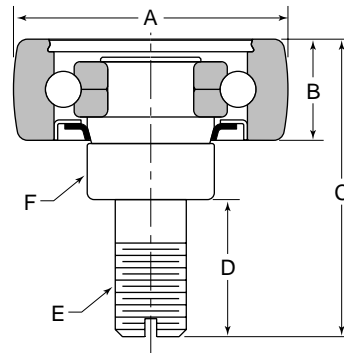
TYPE 3



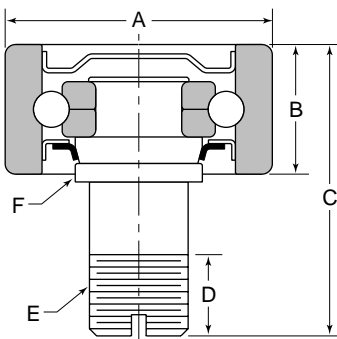
TYPE 4



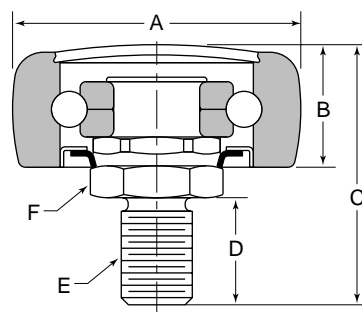
TYPE 5



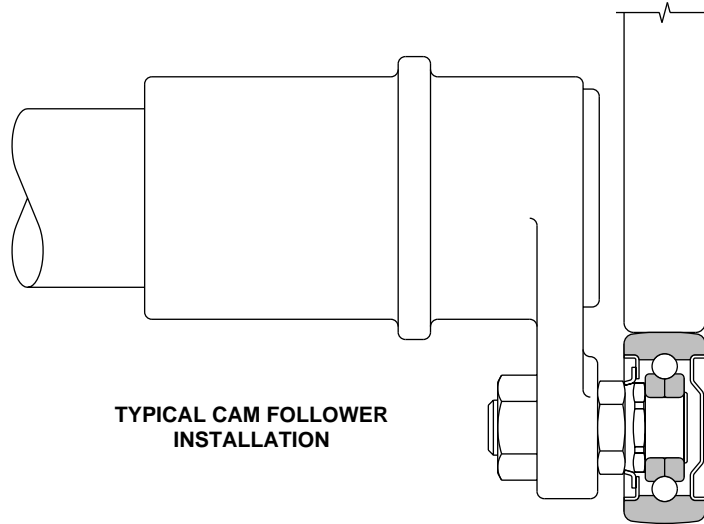
TYPE 6



TYPE 7



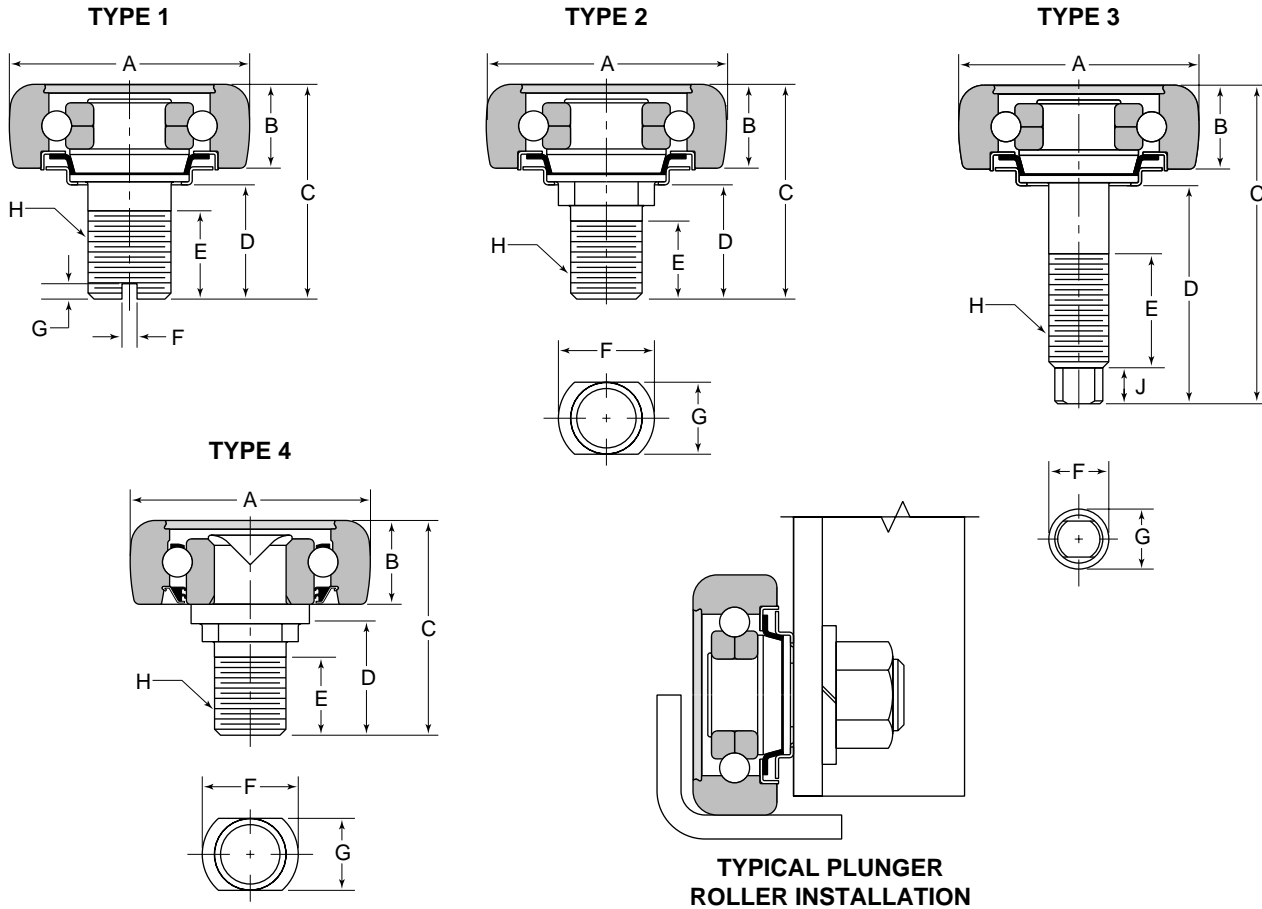
Cam Follower Bearings



Part Number	Type	Outside Diameter A	Outer Ring Width B	Overall Length C	Stud Length D	Stud Dimensions	
						Thread Size E	Type F
Inch							
CF108S4F6	3	1 1/2	5/8	1 13/32	25/32	3/8 24 UNF2A	1/2 HEX
§ CF108S7F7	5	1 1/2	5/8	2 1/16	15/16	7/16 20 UNF2A	1 1/16 RND
§ CF108S10F8	4	1 1/2	5/8	1 3/4	13/16	1/2 20 UNF2A	—
§ CF110S8F10	6	1 5/8	7/8	2 3/8	3/4	5/8 18 UNF2A	—
CF6032	2	1 1/4	5/8	1 5/8	3/4	3/8 24 UNF2A	3/16
§ CF6394	1	1 1/2	5/8	2	1 1/32	1/2 20 UNF2A	1/4
CF6416	3	1 1/4	5/8	1 5/8	3/4	3/8 24 UNF2A	1/2 HEX
§ CF6417	3	1 1/2	5/8	1 7/16	15/32	1/2 20 UNF2A	5/8 HEX
CF6522	2	1 1/4	5/8	2	1 1/8	3/8 24 UNF2A	3/16
§ CF6672	2	1 1/4	5/8	1 3/4	7/8	3/8 24 UNF2A	3/16
CF6888	4	1 3/4	3/4	1 23/32	3/4	.375-.378	—
CF7811E	3	1 1/2	5/8	2 1/32	1 1/16	1/2 20 UNF2A	5/8 HEX
CF7811	3	1 1/2	5/8	2 1/32	1 1/16	1/2 20 UNF2A	5/8 HEX
§ CF9727	7	1 3/4	3/4	2 1/8	1	1/2 20 UNF2A	5/8 HEX

§ NOT NECESSARILY A STOCK ITEM – CHECK FOR AVAILABILITY

Plunger Rollers

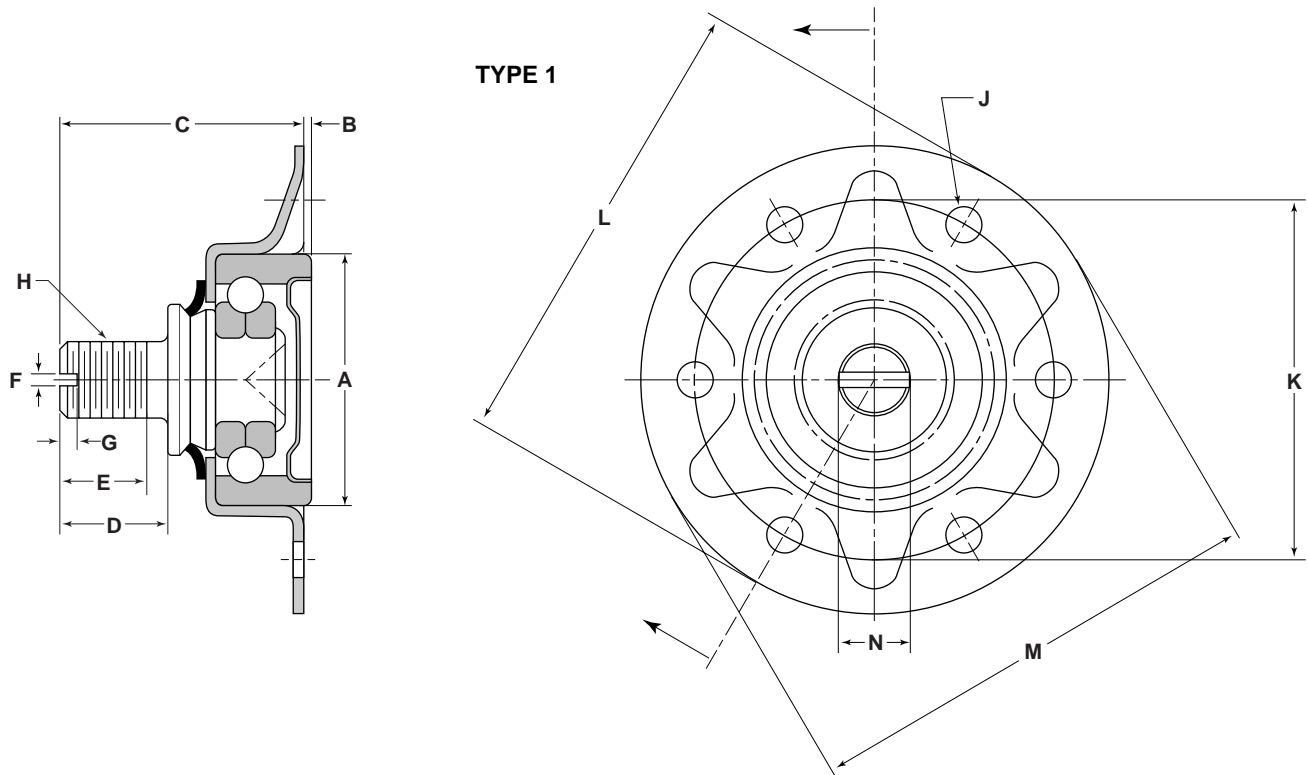


TYPICAL PLUNGER ROLLER INSTALLATION

Part Number	Type	Outside Diameter		Overall Length	Width		Thread Length	Stud Dia./ Slot Width	Stud Dimensions		Extension/ Rivet Hole
		A	B		Stud Length	D			Thread Size	H	
Inch											
6922RH	1	2.0472	0.700	2 17/32	1 3/8	3/4	0.090	1/8	5/8-18-UNF-2A	—	
6922LH	1	2.0472	0.700	2 17/32	1 3/8	3/4	0.090	1/8	5/8-18-UNF-2A (Left-Hand Thread)	—	
6977	1	2.0472	0.700	2 17/32	1 3/8	1 1/16	0.140	5/32	5/8-18-UNF-2A	—	
6901P	4	2.500	0.888	2 1/4	1 5/32	13/16	1.000	0.750	3/4-16-UNF-2A	—	
6901PA	4	2.500	0.888	2 1/4	1 5/32	13/16	1.000	0.750	3/4-16-UNF-2A	—	
6901PW	4	2.500	1.125	2 31/64	1 5/32	13/16	1.000	0.750	3/4-16-UNF-2A	—	
§ 6901M	2	2.500	0.888	2 1/4	1 5/32	13/16	1.000	0.795	M20X1.5-6G	—	
§ 6901S	2	2.500	0.888	2 1/4	1 3/16	13/16	1.000	0.750	3/4-16-UNF-2A	—	
PR6956	1	2.500	0.888	2 7/32	1 1/8	15/16	0.157	0.160	1-8-NC2	—	
§ PR7860	3	2.500	0.888	3 5/16	2 7/32	1 9/16	0.500	0.375	5/8-18-UNF-2A	3/8	
§ 9814	2	2.500	0.888	2 9/16	1 15/16	25/32	1.000	0.750	3/4-16-UNF-2A	—	
§ 9815	2	2.500	0.888	3	1 15/16	1	1.000	0.750	3/4-16-UNF-2A	—	

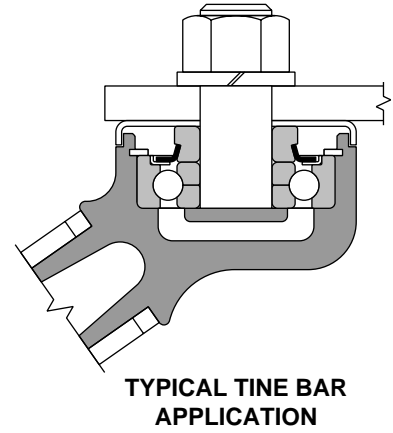
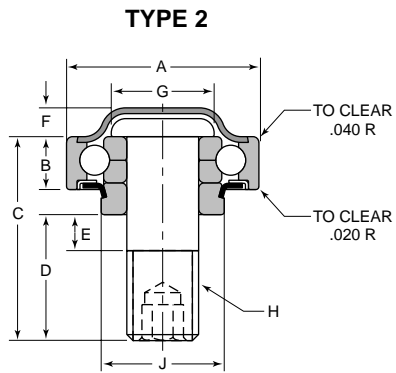
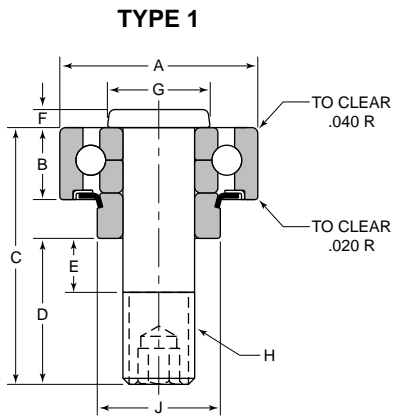
§ NOT NECESSARILY A STOCK ITEM – CHECK FOR AVAILABILITY

Disc Joints Bearings



Part Number	Type	Width		Width				Stud Dimensions			Outside Diameter			
		Outside Diameter A	O.R. Width B	Overall Length C	Stud Length D	Thread Length E	Stud Dia./ Slot Width F	Flat Slot Depth G	Thread Size H	Extension/ Rivet Hole J	Bolt Circle K	Rivet Holes L	Rib M	Flat N
7651B	1	2.0472	.020	2	7/8	11/16	—	—	5/8-18-UNF-2A	9/32	3	3 3/4	3 13/16	.500
7651RH	1	2.0472	.020	2	7/8	11/16	.090	1/8	5/8-18-UNF2A	9/32	3	3 3/4	3 13/16	—
8858RH	1	2.0472	.020	2.450	1 5/16	13/16	.090	1/8	1/8-13-NC-2A	9/32	3	3 3/4	3 13/16	—

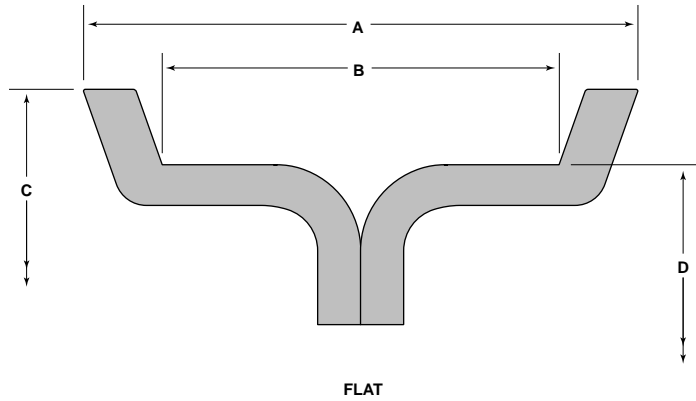
Tine Bar Bearings



Part Number	Type	Outside Diameter	Outer Ring Width	Overall Length	Stud Length	Unthreaded Length	Stickout	Stud Head Diameter	Thread Size	Collar O.D.
		A	B	C	D	E	F	G	H	J
Inch										
§ TB7890	1	1.8504 47	.551	2.125	1 5/16	3/8	.207	1.080	3/4-16-UNF-2A	1.225
7890A	1	1.8504 47	.551	2.350	1 19/64	9/16	.210	1.120	3/4-16-UNF-2A	1.225
§ 8821	2	1.8504 47	.551	2.125	1 5/16	3/8	.300	1.438	3/4-16-UNF-2A	1.225

§ NOT NECESSARILY A STOCK ITEM – CHECK FOR AVAILABILITY

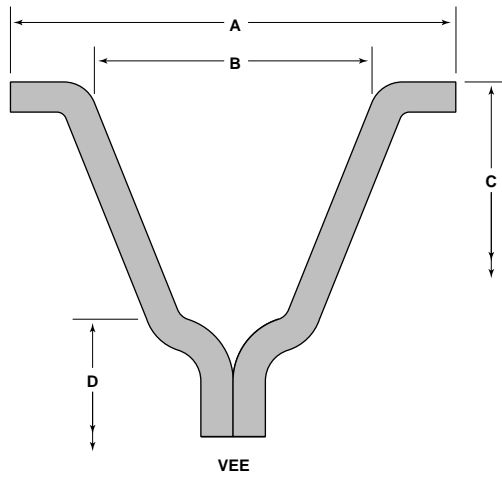
Idler Pulleys Flat



Part Number				Flange Outside Width	Flange Inside Width	Flange Outside Diameter	Pulley Outside Diameter	Shaft Size	Application	
§ Series 1		§ Series 2	§ Series 3	§ Series 4	A	B	C	D		
Old	New				Inch					
6361-S- $\frac{7}{16}$					1.0000	0.5625	3.2500	2.7500	0.4375	BELTS
P-6361	F1L-0801-H		F3L-0801-H	F4L-0801-H	1.0000	0.5625	3.2500	2.7500	0.5000	CHAINS/BELTS
6361- $\frac{5}{8}$	F1L-1001-H		F3L-1001-H	F4L-1001-H	1.0000	0.5625	3.2500	2.7500	0.6250	CHAINS/BELTS
6362-S					1.4063	1.0000	3.5000	2.7500	0.5000	BELTS
6362-S- $\frac{7}{16}$	F1L-0702-H		F3L-0702-H	F4L-0702-H	1.4063	1.0000	3.5000	2.7500	0.4375	CHAINS
P-6362	F1L-0802-H	F2L-0802-H	F3L-0802-H	F4L-0802-H	1.4063	1.0000	3.5000	2.7500	0.5000	CHAINS/BELTS
6362- $\frac{5}{8}$	F1L-1002-H	F2L-1002-H	F3L-1002-H	F4L-1002-H	1.4063	1.0000	3.5000	2.7500	0.6250	CHAINS
P-6364	F1L-0803-H	F2L-0803-H	F3L-0803-H	F4L-0803-H	1.8750	1.5000	3.5000	2.7500	0.5000	CHAINS/BELTS
		F2L-0804-H	F3L-0804-H	F4L-0804-H	2.3750	2.0000	4.0000	3.2500	0.6250	CHAINS/BELTS
P-6365	F1L-0805-S	F2L-0805-S			1.3750	1.0000	4.2500	4.0000	0.5000	BELTS
P-6365- $\frac{5}{8}$	F1L-1005-S	F2L-1005-S			1.4375	1.1250	4.5000	4.0000	0.6250	CHAINS/BELTS
6364- $\frac{5}{8}$	F1L-1003-H	F2L-1003-H	F3L-1003-H	F4L-1003-H	1.8750	1.2500	3.5000	2.7500	0.6250	CHAINS
6432- $\frac{7}{16}$	F1L-0706-S	F2L-0706-S		F4L-0706-S	1.3750	0.8750	5.8750	5.0000	0.4375	CHAINS/BELTS
P-6432	F1L-0806-S	F2L-0806-S		F4L-0806-S	1.3750	0.8750	5.8750	5.0000	0.5000	BELTS
		F1L-1006-S			1.3750	0.8750	5.8750	5.0000	0.6250	BELTS
P-6435	F1L-0807-S	F2L-0807-S			1.8750	1.3125	5.8750	5.0000	0.5000	BELTS
P-6442	F1L-0808-S	F2L-0808-S		F4L-0808-S	1.3750	1.1250	5.3750	5.0000	0.5000	BELTS
6442- $\frac{5}{8}$	F1L-1008-S	F2L-1008-S		F4L-1008-S	1.3750	1.1250	5.4375	5.0000	0.6250	CHAINS/BELTS
6477- $\frac{7}{16}$	F1L-0709-S	F2L-0709-S		F4L-0709-S	1.5000	1.0000	6.7500	6.0000	0.4374	CHAINS/BELTS
P-6477	F1L-0809-S	F2L-0809-S		F4L-0809-S	1.5000	1.0000	6.7500	6.0000	0.5000	BELTS
	F2L-0809-A				1.3125	1.0000	6.7500	6.0000	0.5000	CHAINS/BELTS
6477- $\frac{5}{8}$	F1L-1009-S	F2L-1009-S		F4L-1009-S	1.5000	1.0000	6.7500	6.0000	0.6250	CHAINS/BELTS
	F2L-1009-A				1.3125	1.0000	6.7500	6.0000	0.6250	CHAINS/BELTS

FOR RE-LUBRICATABLE IDLER, SUBSTITUTE AN "R" FOR THE "L" IN THE PART NUMBER. CHECK FOR AVAILABILITY.
 FOR A $\frac{3}{8}$ " BORE SUBSTITUTE "06" FOR "08"; FOR A $\frac{7}{8}$ " BORE SUBSTITUTE "07" FOR "08" AND FOR A $\frac{5}{8}$ " BORE SUBSTITUTE "10" FOR "08".
 § NOT NECESSARILY A STOCK ITEM – CHECK FOR AVAILABILITY

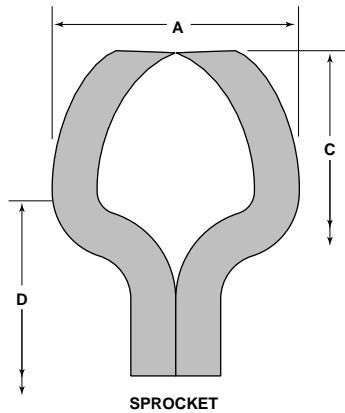
**Idler Pulleys
Vee**



Part Number					Flange Outside Width	Flange Inside Width	Flange Outside Diameter	Pulley Outside Diameter	Shaft Size	Application	
§ Series 1		§ Series 2	§ Series 3	§ Series 4	A	B	C	D			
Old	New				Inch						
PV-6363	V1L-0801-S	V2L-0801-S	V6L-0801-S	V4L-0801-S	1.0000	.6563	5.6250	4.2500	.5000	V BELTS	
6363- ⁵ / ₈	V1L-1001-S	V2L-1001-S		V4L-1001-S	1.0313	.6563	5.6250	4.2500	.6250	V BELTS	
6696- ⁷ / ₁₆	V1L-0702-S	V2L-0702-S		V4L-0702-S	1.1250	.8750	5.7500	3.6250	.4375	V BELTS	
PV-6696	V1L-0802-S	V2L-0802-S		V4L-0802-S	1.1250	.8750	5.7500	3.6250	.5000	V BELTS	
						1.2500	.6563	5.6250	4.2500	.5000	V BELTS
PV-6404	V1L-0803-S	V2L-0803-S		V4L-0803-S	.7500	.5000	4.5000	3.6250	.5000	V BELTS	
PV-7603	V1L-0804-S	V2L-0804-S		V4L-0804-S	.8750	.6563	3.5000	2.7500	.5000	V BELTS	

FOR RE-LUBRICATABLE IDLER, SUBSTITUTE AN "R" FOR THE "L" IN THE PART NUMBER. CHECK FOR AVAILABILITY.
 FOR A ³/₈" BORE SUBSTITUTE "06" FOR "08"; FOR A ⁷/₈" BORE SUBSTITUTE "07" FOR "08" AND FOR A ⁵/₈" BORE SUBSTITUTE "10" FOR "08".
 § NOT NECESSARILY A STOCK ITEM - CHECK FOR AVAILABILITY

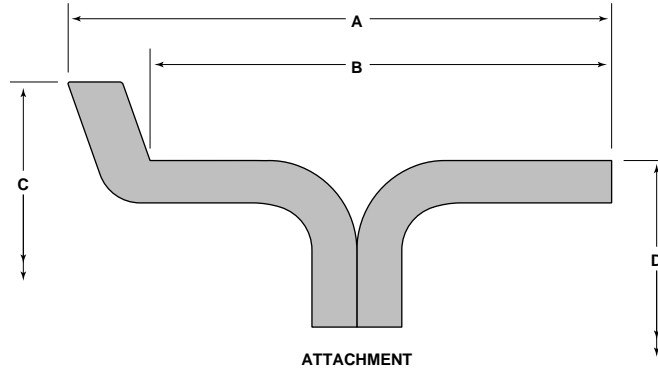
Idler Pulleys Sprocket



Part Number						Sprocket Outside Width A	Sprocket Outside Diameter C	Diameter to Max Width D	Shaft Size	Application
§ Series 1		§ Series 2	§ Series 3	§ Series 4	§ Series 6					
Old	New									
PS-6458	S1L-0801-H	S2L-0801-H	S3L-0801-H	S4L-0801-H		.2840	3.7770	3.2050	.5000	11T 1 EXT
PS-6461	S1L-0802-H	S2L-0802-H		S4L-0802-H		.3430	3.9200	3.2170	.5000	9T 1 ¼ EXT
PS-6503	S1L-0803-H	S2L-0803-H		S4L-0803-H		.4590	4.2210	3.4200	.5000	8T 1 ½ EXT
6503-B						.4590	4.2260	3.4200	.5000	8T 1 ½ EXT ZINC PLATED
6523-7/16	S1L-0705-H	S2L-0705-H	S3L-0705-H	S4L-0705-H		.4590	3.8540	3.1390	.4375	15T ¾ EXT
PS-6523	S1L-0805-H	S2L-0805-H	S3L-0805-H	S4L-0805-H		.4590	3.8540	3.1390	.5000	15T ¾ EXT
PS-6744	S1L-0806-H	S2L-0806-H	S3L-0806-H	S4L-0806-H		.3430	3.6250	3.0010	.5000	17T 5/8 EXT
6744-5/8	S1L-1006-H	S2L-1006-H	S3L-1006-H	S4L-1006-H		.3430	3.6250	3.0010	.6250	17T 5/8 EXT
		S2L-1003-H				.4590	4.2210	3.4200	.6250	8T ½ EXT
					S6L-1007-H	.4680	4.7530	3.6020	.6250	8T #555 ROLLER CHAIN

§ NOT NECESSARILY A STOCK ITEM – CHECK FOR AVAILABILITY

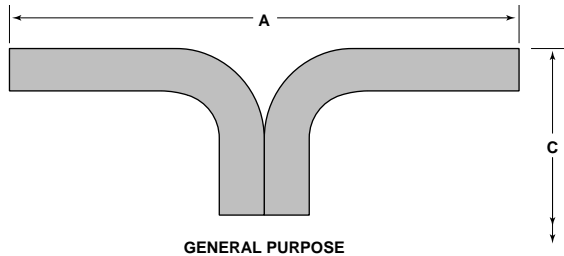
Idler Pulleys Attachment



Part Number					Flange Outside Width	Flange Inside Width	Flange Outside Diameter	Pulley Outside Diameter	Shaft Size	Application
§ Series 1		§ Series 2	§ Series 3	§ Series 4	A	B	C	D		
Old	New				Inch					
6367	A1L-0801-H	A2L-0801-H	A3L-0801-H	A4L-0801-H	1.6850	1.5000	3.5000	2.7500	.5000	CHAINS, ATTCH
6367- ⁷ / ₈	A1L-1001-H	A2L-1001-H	A3L-1001-H	A4L-1001-H	1.6875	1.5000	3.5000	2.7500	.6250	CHAINS

§ NOT NECESSARILY A STOCK ITEM – CHECK FOR AVAILABILITY

Idler Pulleys General Purpose



Part Number					Flange Outside Width A	Flange Outside Diameter C	Shaft Size	Application
§ Series 1		§ Series 2	§ Series 3	§ Series 4				
Old	New				Inch			
6693	G1L-0801-H	G2L-0801-H		G4L-0801-H	1.5000	2.7500	.5000	BELTS, CHAINS
6693- ⁵ / ₈					1.5000	2.7500	.6250	CHAINS
	G1L-0802-H	G2L-0802-H			1.0625	3.2500	.5000	BELTS, CHAINS

FOR RE-LUBRICATABLE IDLER, SUBSTITUTE AN "R" FOR THE "L" IN THE PART NUMBER. CHECK FOR AVAILABILITY.
 FOR A ³/₈" BORE SUBSTITUTE "06" FOR "08"; FOR A ⁷/₈" BORE SUBSTITUTE "07" FOR "08" AND FOR A ⁵/₈" BORE SUBSTITUTE "10" FOR "08".
 § NOT NECESSARILY A STOCK ITEM – CHECK FOR AVAILABILITY