

## Power Transmission Series Intro

NTN-BCA® cast iron pillow blocks and flanged housing units provide a compact one-piece ball bearing unit that can be mounted with a minimum of machining.

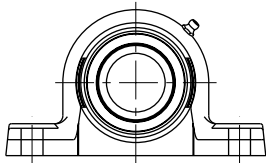
These units are designed for slip-fit mounting on standard diameter commercial steel shafting. The eccentric locking collar provides a simple and positive method of securing the bearing to the shaft.

The housing seat and corresponding bearing outside diameter have spherical surfaces for initial self-alignment. These units are furnished with a lubrication fitting and matching relube type bearing.

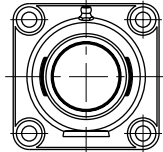
The Vanguard® seals are specifically designed for extremely

dirty conditions, and conditions where trash and wrapping are a problem. All Vanguard® seals are land-riding, trash-guarded, and corrosion resistant.

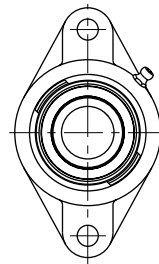
The (narrow single lip), Vanguard® “G” (wide single lip), Vanguard® “V” (wide double lip) and Vanguard® “T” (wide triple lip) seals are available in these units. The Vanguard® “R” single lip seal is designed for installations where space is limited and operating conditions are severe. The Vanguard® “G” seal allows maximum grease capacity for high speed applications. The Vanguard® “V” seal is designed for severe applications at moderate speeds. The Vanguard® “T” seal is designed for extremely severe applications at moderate speeds.



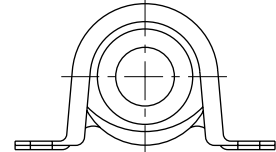
SERIES—PHV, PWG, PWT, PWV,  
PWRH, PWOL, SPNR



SERIES—FNR, FWG,  
FWT, FWV, FWRH,  
SAFNR

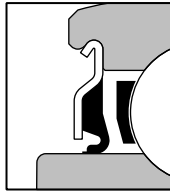


SERIES—TNR, TWG,  
TWT, TWV, SATNR

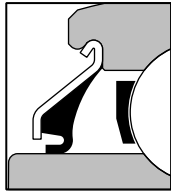


SERIES—SPB

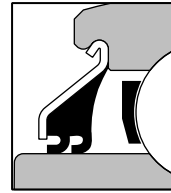
### Vanguard® Seals



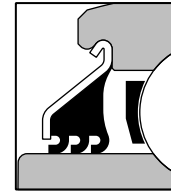
VANGUARD® “R” SEAL



VANGUARD® “G” SEAL



VANGUARD® “V” SEAL



VANGUARD® “T” SEAL

### PNR — Cast Iron Pillow Blocks Extended Inner Ring Bearings with Narrow Single Lip Seal

PNR series pillow block units are recommended for economical mounting in industrial and agricultural applications where normal loads are encountered. All units are ready for immediate installation and are re-lubricatable. These units are furnished with NTN-BCA® NPS series extended ring adapter bearings featuring the exclusive Vanguard® “R” seals.

### PWG — Cast Iron Pillow Blocks Wide Inner Ring Bearings with Vanguard® “G” Seal

PWG series pillow blocks provide a compact unit with NTN-BCA®’s HPS hex bore or WPS series wide inner ring bearings for added shaft support. These re-lubricatable units feature Vanguard® “G” seals, and are ready for immediate installation.

### PHV, PWV — Cast Iron Pillow Blocks Wide Inner Ring Bearings Vanguard® “V” Seal

PHV and PWV series pillow blocks provide a compact unit with NTN-BCA®’s HPS hex bore or WPS series wide inner ring bearings for added shaft support. These re-lubricatable units feature Vanguard® “V” seals, and are ready for immediate installation.

### PWT — Cast Iron Pillow Blocks Wide Inner Ring Bearings Vanguard® “T” Seal

PWT series pillow blocks provide a compact unit with NTN-BCA®’s HPS hex bore or WPS series wide inner ring bearings for added shaft support. These re-lubricatable units feature Vanguard® “T” seals, and are ready for immediate installation.

### PWOL — Fixed and Floating Heavy Series Pillow Block Units

NTN-BCA®’s PWOL series provides the ultimate in performance in the most demanding applications. The pillow block housing and end cover are precision machined from ductile iron castings. These components are manufactured to exacting standards of accuracy and assembled with an unsealed WPSH heavy series bearing which has been matched to an external aligning ring. This permits initial bearing alignment while providing the bearing with an axial float capability to accommodate any thermal shaft growth that may be encountered. All units come assembled with a removable spacer ring. The spacer ring is left out of the unit at installation to utilize the float feature and left in to obtain a “fixed” unit.

As supplied, the bearings are coated with a rust preventative. The unit, when installed, may be either grease or oil lubricated. High temperature packings are included for mounted at each

## Power Transmission Series Intro

end of the unit. They are retained by metal plates which may be mechanically adjusted to assure proper oil retention, seal out contaminants, and insure no excessive heat is generated.

The heavy series ball bearing assemblies are designed to provide extended service in the most rigorous applications.

### PWRH-R — Heavy Series Low Base-To-Center Pillow Block Units

NTN-BCA®'s PWRH-R pillow block series is a complete compact assembly designed for low base to center height requirements. The precision machined cast ductile housing into which a WPSH P.T.F.E. sealed bearing is carefully custom fitted provides a durable combination capable of operation in high temperature, high speed and heavily loaded applications. The housing is provided with a lubricating fitting which permits periodic replenishment of the lubricant as necessary.

### PWRH-RS — Heavy Series High Base-To-Center Pillow Block Units

NTN-BCA®'s PWRH-RS high base to center height pillow block units consist of a precision machined high strength ductile iron casting into which a P.T.F.E. sealed WPSH heavy series bearing is custom fitted. The assembly provides an exceptionally heavy duty unit suitable for use in hostile environments as well as in high temperature and high speed applications. Extended service life is achievable with the higher bearing capacity available from use of 300 series internal bearing design characteristics in conjunction with relubrication provisions in the housing which permit periodic replenishment of the lubricant necessary.

### FWG, FWV, FWT — 4-Bolt Cast Iron Flange Units Wide Inner Ring Bearings Vanguard® Wide Single, Double and Triple Lip Seals

FWG, FWV and FWT 4-bolt cast iron flanged units provide a compact, rigid unit with NTN-BCA®'s WPS series wide inner ring bearings for added shaft support. The wide inner ring bearings used in these units are available with Vanguard® "G" (wide single lip), Vanguard® "V" (wide double lip), or Vanguard® "T" (wide triple lip) seals.

### FWRH-R — Heavy Series Four Bolt Flanged Unit

NTN-BCA®'s FWRH-R series is a self-contained heavy duty precision assembly designed and developed for use in high speed and high temperature applications. The high strength ductile iron housing can withstand severe impact and sustained heavy loading without the potential for fracture. Assembled with a state-of-the-art precision WPSH P.T.F.E. sealed heavy series bearing, these flanged units offer the ultimate in load carrying capability and operational characteristics. The housing is provided with a lubrication fitting for periodic replenishment of the grease as necessary.

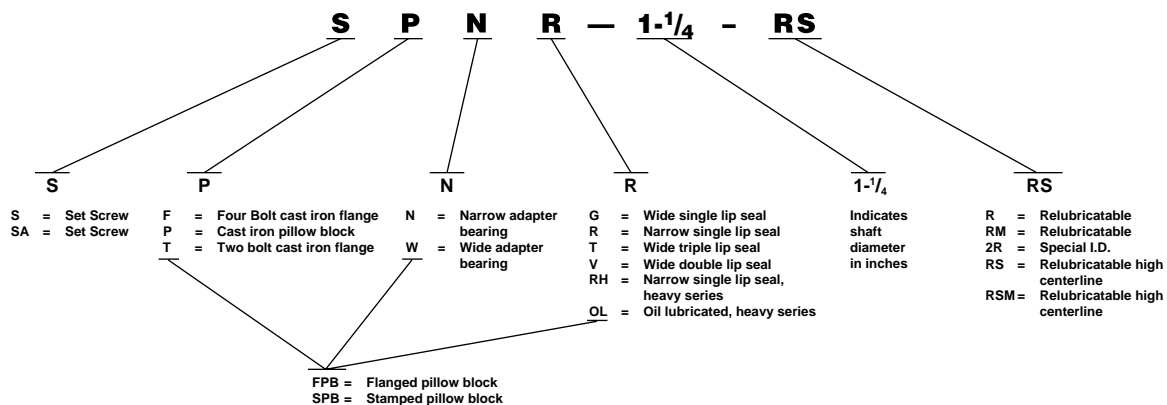
### TWG, TWV, TWT — 2-Bolt Cast Iron Flange Units Wide Inner Ring Bearings Vanguard® Wide Single, Double and Triple Lip Seals

TWG, TWV and TWT series 2-bolt cast iron flange units are similar to the TNR series except they are furnished with NTN-BCA® WPS series wide inner ring bearings for added shaft support. The wide inner ring bearings in these units are available with Vanguard® "G" (wide single lip), Vanguard® "V" (wide double lip), or Vanguard® "T" (wide triple lip) seals.

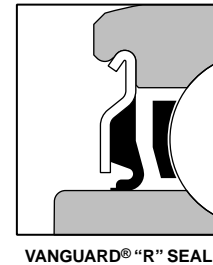
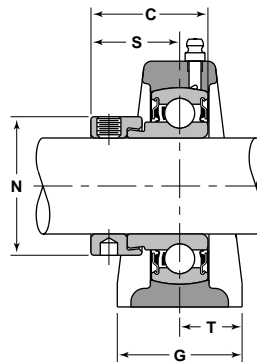
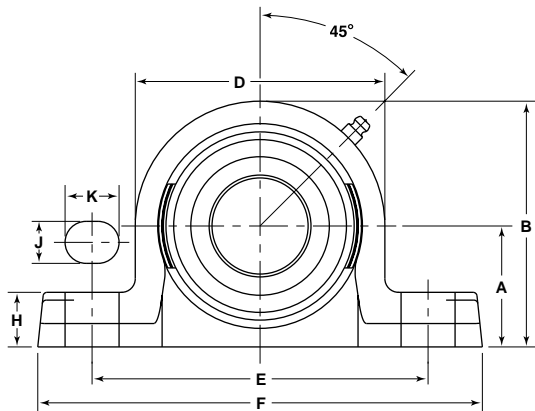
### NTN-BCA® Cast Iron Housings

Heavy section, full base support to provided added rigidity of mounting. Meets ABMA dimensional standards to ensure mounting compatibility. High Yield Strength Class 30 iron for increased life. Precision machined to exact tolerances for good bearing to housing fits. They come in eight styles: (see tables following)

1. Two Bolt Flange Housings
2. Four Bolt Flange Housings
3. Two Bolt Light Duty Flange Housing
4. Three Bolt Light Duty Flange Housing
5. Hanger Unit Housing
6. Take Up Housing
7. Stamped Steel Pillow Block Housings
8. Cast Iron Housings for Re-lubricatable Adapter Bearings



**PNR—Cast Iron Pillow Blocks  
Extended Inner Ring Bearings  
VANGUARD® Narrow Single Lip Seals**

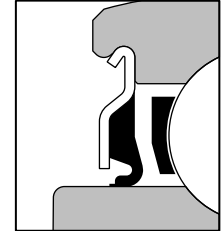
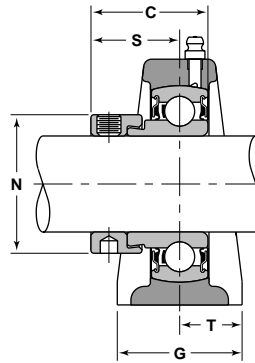
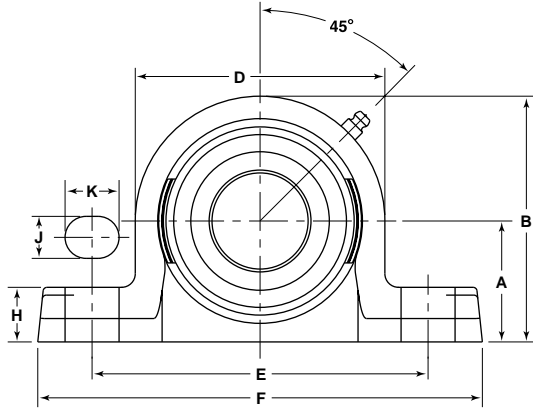


Unit Number	Shaft Diameter	Basic Outer Ring	A	A $\ominus$	B	B $\ominus$	C	D	E	F	G
PNR-1/2-R	1/2	203	1 1/16	1 3/16	2 1/8	2 1/4	1 1/8	2 1/8	3 1/2	4 3/4	1 1/4
§ PNR-9/16-R	9/16	203	1 1/16	1 3/16	2 1/8	2 1/4	1 1/8	2 1/8	3 1/2	4 3/4	1 1/4
PNR-5/8-R	5/8	203	1 1/16	1 3/16	2 1/8	2 1/4	1 1/8	2 1/8	3 1/2	4 3/4	1 1/4
PNR-3/4-R	3/4	204	1 1/4	1 5/16	2 1/2	2 9/16	1 7/32	2 1/2	3 7/8	5 1/4	1 1/2
PNR-13/16-R	13/16	205	1 5/16	1 7/16	2 11/16	2 13/16	1 7/32	2 3/4	4 1/8	5 1/2	1 5/8
PNR-15/16-R	15/16	205	1 5/16	1 7/16	2 11/16	2 13/16	1 7/32	2 3/4	4 1/8	5 1/2	1 5/8
PNR-7/8-R	7/8	205	1 5/16	1 7/16	2 11/16	2 13/16	1 7/32	2 3/4	4 1/8	5 1/2	1 5/8
PNR-1-R	1	205	1 5/16	1 7/16	2 11/16	2 13/16	1 7/32	2 3/4	4 1/8	5 1/2	1 5/8
PNR-1 1/16-R	1 1/16	206	1 9/16	1 11/16	3 5/32	3 9/32	1 13/32	3 3/16	4 3/4	6 5/16	1 3/4
PNR-1 1/8-R	1 1/8	206	1 9/16	1 11/16	3 5/32	3 9/32	1 13/32	3 3/16	4 3/4	6 5/16	1 3/4
PNR-1 3/16-R	1 3/16	206	1 9/16	1 11/16	3 5/32	3 9/32	1 13/32	3 3/16	4 3/4	6 5/16	1 3/4
PNR-1 1/4-2R	1 1/4	206	1 9/16	1 11/16	3 5/32	3 9/32	1 13/32	3 3/16	4 3/4	6 5/16	1 3/4
PNR-1 1/4-R	1 1/4	207	1 13/16	1 7/8	3 5/8	1 11/16	1 17/32	3 5/9	5	6 9/16	1 7/8
PNR-1 5/16-R	1 5/16	207	1 13/16	1 7/8	3 5/8	1 11/16	1 17/32	3 5/9	5	6 9/16	1 7/8
PNR-1 3/8-R	1 3/8	207	1 13/16	1 7/8	3 5/8	1 11/16	1 17/32	3 5/9	5	6 9/16	1 7/8
PNR-1 7/16-R	1 7/16	207	1 13/16	1 7/8	3 5/8	1 11/16	1 17/32	3 5/9	5	6 9/16	1 7/8
PNR-1 1/2-R	1 1/2	208	1 15/16	2	3 15/16	4	1 23/32	4	5 1/2	7 1/8	2
PNR-1 9/16-R	1 9/16	208	1 15/16	2	3 15/16	4	1 23/32	4	5 1/2	7 1/8	2

⊖ DIMENSIONS FOR HIGH CENTERLINE; ADD SUFFIX "S" TO UNIT NUMBER AND HOUSING NUMBER.

§ NOT NECESSARILY A STOCK ITEM – CHECK FOR AVAILABILITY.

# PNR—Cast Iron Pillow Blocks Extended Inner Ring Bearings VANGUARD® Narrow Single Lip Seals



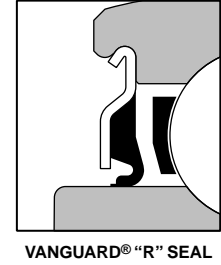
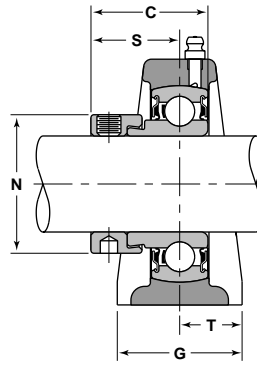
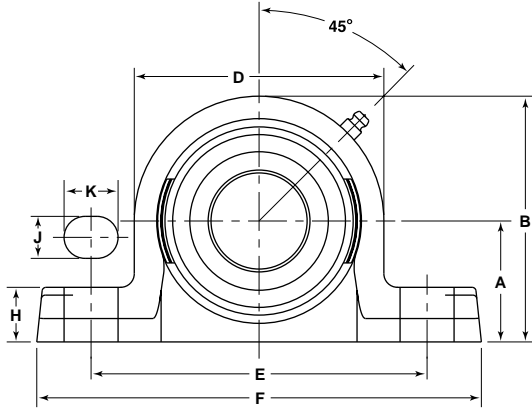
VANGUARD® "R" SEAL

H	J	K	N	S	T	Bolt Size	Basic Load Ratings		Bearing Number®	Housing Number	Collar Number
							Dynamic C	Static C <sub>0</sub>			
Inch							lbs/N				
1/2	7/16	9/16	1 1/8	7/8	5/8	3/8	2150 9550	1070 4760	NPS-008-RRC	P-40-R	C-008
1/2	7/16	9/16	1 1/8	7/8	5/8	3/8	2150 9550	1070 4760	NPS-009-RRC	P-40-R	C-009
1/2	7/16	9/16	1 1/8	7/8	5/8	3/8	2150 9550	1070 4760	NPS-010-RRC	P-40-R	C-010
9/16	7/16	5/8	1 5/16	59/64	3/4	3/8	2880 12790	1480 6580	NPS-012-RRC	P-47-R	C-012
5/8	7/16	5/8	1 1/2	59/64	13/16	3/8	3150 14010	1760 7830	NPS-013-RRC	P-52-R	C-013
5/8	7/16	5/8	1 1/2	59/64	13/16	3/8	3150 14010	1760 7830	NPS-015-RRC	P-52-R	C-015
5/8	7/16	5/8	1 1/2	59/64	13/16	3/8	3150 14010	1760 7830	NPS-014-RRC	P-52-R	C-014
5/8	7/16	5/8	1 1/2	59/64	13/16	3/8	3150 14010	1760 7830	NPS-100-RRC	P-52-R	C-100
3/4	9/16	3/4	1 3/4	1 3/64	7/8	1/2	4370 19450	2530 11260	NPS-101-RRC	P-62-R	C-101
3/4	9/16	3/4	1 3/4	1 3/64	7/8	1/2	4370 19450	2530 11260	NPS-102-RRC	P-62-R	C-102
3/4	9/16	3/4	1 3/4	1 3/64	7/8	1/2	4370 19450	2530 11260	NPS-103-RRC	P-62-R	C-103
3/4	9/16	3/4	1 3/4	1 3/64	7/8	1/2	4370 19450	2530 11260	NPS-103-RR2C	P-62-R	C-103-2
13/16	9/16	3/4	2 1/8	1 5/32	5/16	1/2	5770 25670	3440 15300	NPS-104-RRC	P-72-R	C-104
13/16	9/16	3/4	2 1/8	1 5/32	5/16	1/2	5770 25670	3440 15300	NPS-105-RRC	P-72-R	C-105
13/16	9/16	3/4	2 1/8	1 5/32	5/16	1/2	5770 25670	3440 15300	NPS-106-RRC	P-72-R	C-106
13/16	9/16	3/4	2 1/8	1 5/32	5/16	1/2	5770 25670	3440 15300	NPS-107-RRC	P-72-R	C-107
7/8	9/16	3/4	2 3/8	1 9/32	1	1/2	6540 29110	4020 17900	NPS-108-RRC	P-80-R	C-108
7/8	9/16	3/4	2 3/8	1 9/32	1	1/2	6540 29110	4020 17900	NPS-109-RRC	P-80-R	C-109

① DIMENSIONS FOR HIGH CENTERLINE; ADD SUFFIX "S" TO UNIT NUMBER AND HOUSING NUMBER.

§ NOT NECESSARILY A STOCK ITEM – CHECK FOR AVAILABILITY.

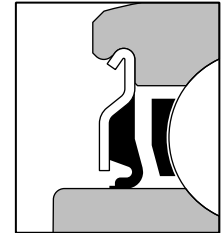
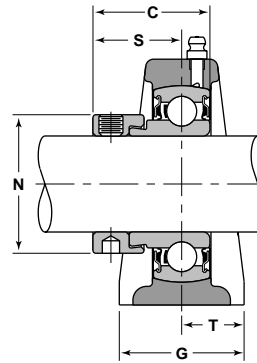
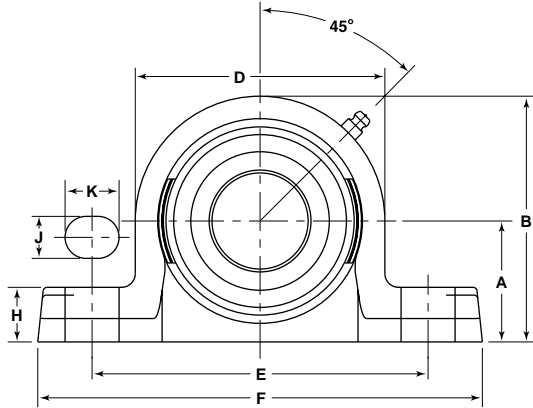
**PNR—Cast Iron Pillow Blocks  
Extended Inner Ring Bearings  
VANGUARD® Narrow Single Lip Seals**



Unit Number	Shaft Diameter	Basic Outer Ring	A	A $\ominus$	B	B $\ominus$	C	D	E	F	G
§ PNR-1 5/8-R	1 5/8	209	2 1/16	2 1/8	4 3/16	4 1/4	1 23/32	4 1/4	5 3/4	7 1/2	2 1/8
§ PNR-1 11/16-R	1 11/16	209	2 1/16	2 1/8	4 3/16	4 1/4	1 23/32	4 1/4	5 3/4	7 1/2	2 1/8
§ PNR-1 3/4-R	1 3/4	209	2 1/16	2 1/8	4 3/16	4 1/4	1 23/32	4 1/4	5 3/4	7 1/2	2 1/8
§ PNR-1 13/16-R	1 13/16	210	2 3/16	2 1/4	4 7/16	4 1/2	1 23/32	4 1/2	6 1/2	8	2 1/4
§ PNR-1 7/8-R	1 7/8	210	2 3/16	2 1/4	4 7/16	4 1/2	1 23/32	4 1/2	6 1/2	8	2 1/4
§ PNR-1 15/16-R	1 15/16	210	2 3/16	2 1/4	4 7/16	4 1/2	1 23/32	4 1/2	6 1/2	8	2 1/4
§ PNR-2-2R	2	210	2 3/16	2 1/4	4 7/16	4 1/2	1 23/32	4 1/2	6 1/2	8	2 1/4

⊖ DIMENSIONS FOR HIGH CENTERLINE; ADD SUFFIX "S" TO UNIT NUMBER AND HOUSING NUMBER.  
 § NOT NECESSARILY A STOCK ITEM – CHECK FOR AVAILABILITY.

## PNR—Cast Iron Pillow Blocks Extended Inner Ring Bearings VANGUARD® Narrow Single Lip Seals

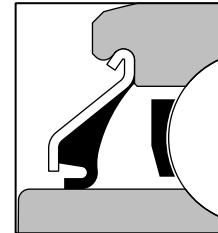
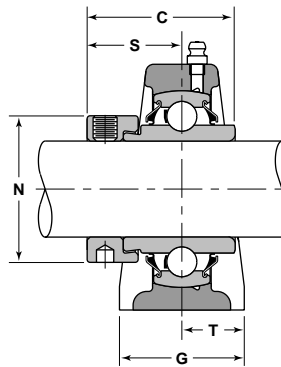
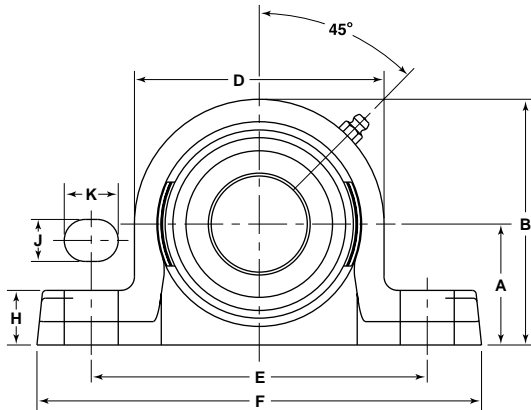


VANGUARD® "R" SEAL

H	J	K	N	S	T	Bolt Size	Basic Load Ratings		Bearing Number <sup>①</sup>	Housing Number	Collar Number
							Dynamic C	Static C <sub>0</sub>			
Inch							lbs/N				
15/16	9/16	3/4	2 1/2	1 9/32	1	1/2	7020 31240	4570 20320	NPS-110-RRC	P-85-R	C-110
15/16	9/16	3/4	2 1/2	1 9/32	1	1/2	7020 31240	4570 20320	NPS-111-RRC	P-85-R	C-111
15/16	9/16	3/4	2 1/2	1 9/32	1	1/2	7020 31240	4570 20320	NPS-112-RRC	P-85-R	C-112
1	9/16	3/4	3 3/4	1 9/32	1 3/32	1/2	7890 35070	5210 23180	NPS-113-RRC	P-90-R	C-113
1	9/16	3/4	3 3/4	1 9/32	1 3/32	1/2	7890 35070	5210 23180	NPS-114-RRC	P-90-R	C-114
1	9/16	3/4	3 3/4	1 9/32	1 3/32	1/2	7890 35070	5210 23180	NPS-115-RRC	P-90-R	C-115
1	9/16	3/4	3 3/4	1 9/32	1 3/32	1/2	7890 35070	5210 23180	NPS-115-RR2C	P-90-R	C-115-2

① DIMENSIONS FOR HIGH CENTERLINE; ADD SUFFIX "S" TO UNIT NUMBER AND HOUSING NUMBER.  
§ NOT NECESSARILY A STOCK ITEM – CHECK FOR AVAILABILITY.

**PWG—Cast Iron Pillow Blocks**  
**Wide Inner Ring Bearings**  
**VANGUARD® Wide Single, Double and Triple Lip Seals**



VANGUARD® "G" SEAL

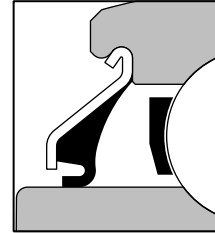
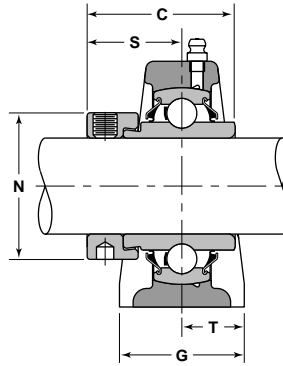
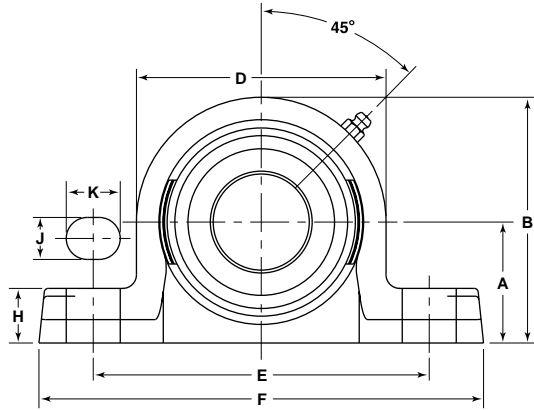
Unit With Vanguard "G" Seal	Shaft Diameter	Basic Outer Ring	A	A $\ominus$	B	B $\ominus$	C	D	E	F	G
PWG- $\frac{3}{4}$ -R	$\frac{3}{4}$	204	1 $\frac{1}{4}$	1 $\frac{5}{16}$	2 $\frac{1}{2}$	2 $\frac{9}{16}$	1 $\frac{23}{32}$	2 $\frac{1}{2}$	3 $\frac{7}{8}$	5 $\frac{1}{4}$	1 $\frac{1}{2}$
PWG- $\frac{13}{16}$ -R	$\frac{13}{16}$	205	1 $\frac{5}{16}$	1 $\frac{7}{16}$	2 $\frac{11}{16}$	2 $\frac{13}{16}$	1 $\frac{3}{4}$	2 $\frac{3}{4}$	4 $\frac{1}{8}$	5 $\frac{1}{2}$	1 $\frac{5}{8}$
PWG- $\frac{7}{8}$ -R	$\frac{7}{8}$	205	1 $\frac{5}{16}$	1 $\frac{7}{16}$	2 $\frac{11}{16}$	2 $\frac{13}{16}$	1 $\frac{3}{4}$	2 $\frac{3}{4}$	4 $\frac{1}{8}$	5 $\frac{1}{2}$	1 $\frac{5}{8}$
PWG- $\frac{15}{16}$ -R	$\frac{15}{16}$	205	1 $\frac{5}{16}$	1 $\frac{7}{16}$	2 $\frac{11}{16}$	2 $\frac{13}{16}$	1 $\frac{3}{4}$	2 $\frac{3}{4}$	4 $\frac{1}{8}$	5 $\frac{1}{2}$	1 $\frac{5}{8}$
PWG-1-R	1	205	1 $\frac{5}{16}$	1 $\frac{7}{16}$	2 $\frac{11}{16}$	2 $\frac{13}{16}$	1 $\frac{3}{4}$	2 $\frac{3}{4}$	4 $\frac{1}{8}$	5 $\frac{1}{2}$	1 $\frac{5}{8}$
PWG-1 $\frac{1}{16}$ -RM	1 $\frac{1}{16}$	206	1 $\frac{9}{16}$	1 $\frac{11}{16}$	3 $\frac{5}{32}$	3 $\frac{9}{32}$	1 $\frac{29}{32}$	3 $\frac{3}{16}$	4 $\frac{3}{4}$	6 $\frac{5}{16}$	1 $\frac{3}{4}$
PWG-1 $\frac{1}{8}$ -R	1 $\frac{1}{8}$	206	1 $\frac{9}{16}$	1 $\frac{11}{16}$	3 $\frac{5}{32}$	3 $\frac{9}{32}$	1 $\frac{29}{32}$	3 $\frac{3}{16}$	4 $\frac{3}{4}$	6 $\frac{5}{16}$	1 $\frac{3}{4}$
PWG-1 $\frac{3}{16}$ -RM	1 $\frac{3}{16}$	206	1 $\frac{9}{16}$	1 $\frac{11}{16}$	3 $\frac{5}{32}$	3 $\frac{9}{32}$	1 $\frac{29}{32}$	3 $\frac{3}{16}$	4 $\frac{3}{4}$	6 $\frac{5}{16}$	1 $\frac{3}{4}$
§ PWG-1 $\frac{1}{4}$ -2R	1 $\frac{1}{4}$	206	1 $\frac{9}{16}$	1 $\frac{11}{16}$	3 $\frac{5}{32}$	3 $\frac{9}{32}$	1 $\frac{29}{32}$	3 $\frac{3}{16}$	4 $\frac{3}{4}$	6 $\frac{5}{16}$	1 $\frac{3}{4}$
PWG-1 $\frac{1}{4}$ -R	1 $\frac{1}{4}$	207	1 $\frac{13}{16}$	1 $\frac{7}{8}$	3 $\frac{5}{8}$	3 $\frac{11}{16}$	2 $\frac{1}{64}$	3 $\frac{5}{8}$	5	6 $\frac{9}{16}$	1 $\frac{7}{8}$
PWG-1 $\frac{5}{16}$ -RM	1 $\frac{5}{16}$	207	1 $\frac{13}{16}$	1 $\frac{7}{8}$	3 $\frac{5}{8}$	3 $\frac{11}{16}$	2 $\frac{1}{64}$	3 $\frac{5}{8}$	5	6 $\frac{9}{16}$	1 $\frac{7}{8}$
PWG-1 $\frac{3}{8}$ -R	1 $\frac{3}{8}$	207	1 $\frac{13}{16}$	1 $\frac{7}{8}$	3 $\frac{5}{8}$	3 $\frac{11}{16}$	2 $\frac{1}{64}$	3 $\frac{5}{8}$	5	6 $\frac{9}{16}$	1 $\frac{7}{8}$
PWG-1 $\frac{7}{16}$ -R	1 $\frac{7}{16}$	207	1 $\frac{13}{16}$	1 $\frac{7}{8}$	3 $\frac{5}{8}$	3 $\frac{11}{16}$	2 $\frac{1}{64}$	3 $\frac{5}{8}$	5	6 $\frac{9}{16}$	1 $\frac{7}{8}$
PWG-1 $\frac{1}{2}$ -R	1 $\frac{1}{2}$	208	1 $\frac{15}{16}$	2	3 $\frac{15}{16}$	4	2 $\frac{7}{32}$	4	5 $\frac{1}{2}$	7 $\frac{1}{8}$	2
PWG-1 $\frac{9}{16}$ -R	1 $\frac{9}{16}$	208	1 $\frac{15}{16}$	2	3 $\frac{15}{16}$	4	2 $\frac{7}{32}$	4	5 $\frac{1}{2}$	7 $\frac{1}{8}$	2
PWG-1 $\frac{5}{8}$ -R	1 $\frac{5}{8}$	209	2 $\frac{1}{16}$	2 $\frac{1}{8}$	4 $\frac{3}{16}$	4 $\frac{1}{4}$	2 $\frac{7}{32}$	4 $\frac{1}{4}$	5 $\frac{3}{4}$	7 $\frac{1}{2}$	2 $\frac{1}{8}$
PWG-1 $\frac{11}{16}$ -R	1 $\frac{11}{16}$	209	2 $\frac{1}{16}$	2 $\frac{1}{8}$	4 $\frac{3}{16}$	4 $\frac{1}{4}$	2 $\frac{7}{32}$	4 $\frac{1}{4}$	5 $\frac{3}{4}$	7 $\frac{1}{2}$	2 $\frac{1}{8}$
PWG-1 $\frac{3}{4}$ -R	1 $\frac{3}{4}$	209	2 $\frac{1}{16}$	2 $\frac{1}{8}$	4 $\frac{3}{16}$	4 $\frac{1}{4}$	2 $\frac{7}{32}$	4 $\frac{1}{4}$	5 $\frac{3}{4}$	7 $\frac{1}{2}$	2 $\frac{1}{8}$

⊖ DIMENSIONS FOR HIGH CENTERLINE; ADD SUFFIX "S" TO UNIT NUMBER AND HOUSING NUMBER.

§ NOT NECESSARILY A STOCK ITEM – CHECK FOR AVAILABILITY.

# PWG—Cast Iron Pillow Blocks Wide Inner Ring Bearings

## VANGUARD® Wide Single, Double and Triple Lip Seals



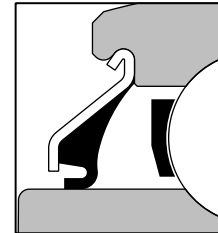
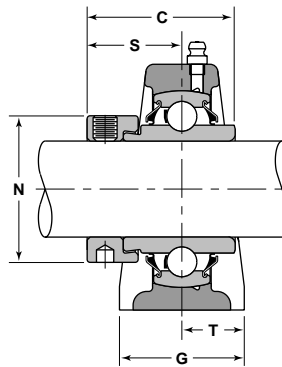
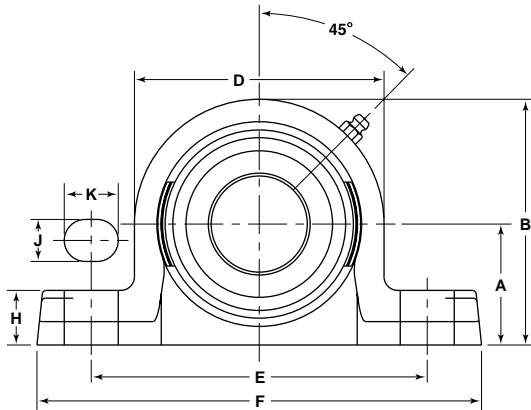
VANGUARD® "G" SEAL

H	J	K	N	S	T	Bolt Size	Basic Load Ratings		Bearing Number <sup>①</sup>	Housing Number	Collar Number
							Dynamic C	Static C <sub>0</sub>			
Inch							lbs/N				
9/16	7/16	5/8	1 5/16	1 3/64	3/4	3/8	2880 12790	1480 6580	WPS-0120GRC	P-47-R	C-012
5/8	7/16	5/8	1 1/2	1 1/16	13/16	3/8	3150 14010	1760 7830	WPS-013-GRC	P-52-R	C-013
5/8	7/16	5/8	1 1/2	1 1/16	13/16	3/8	3150 14010	1760 7830	WPS-014-GRC	P-52-R	C-014
5/8	7/16	5/8	1 1/2	1 1/16	13/16	3/8	3150 14010	1760 7830	WPS-015-GRC	P-52-R	C-015
5/8	7/16	5/8	1 1/2	1 1/16	13/16	3/8	3150 14010	1760 7830	WPS-100-GRC	P-52-R	C-100
3/4	9/16	3/4	1 3/4	1 3/16	7/8	1/2	4370 19450	2530 11260	WPS-101-GRC	P-62-R	C-101
3/4	9/16	3/4	1 3/4	1 3/16	7/8	1/2	4370 19450	2530 11260	WPS-102-GRC	P-62-R	C-102
3/4	9/16	3/4	1 3/4	1 3/16	7/8	1/2	4370 19450	2530 11260	WPS-103-GRC	P-62-R	C-103
3/4	9/16	3/4	1 3/4	1 3/16	7/8	1/2	4370 19450	2530 11260	WPS-103-GR2C	P-62-R	C-103-2
13/16	9/16	3/4	2 1/8	1 9/32	15/16	1/2	5770 25670	3440 15300	WPS-104-GRC	P-72-R	C-104
13/16	9/16	3/4	2 1/8	1 9/32	15/16	1/2	5770 25670	3440 15300	WPS-105-GRC	P-72-R	C-105
13/16	9/16	3/4	2 1/8	1 9/32	15/16	1/2	5770 25670	3440 15300	WPS-106-GRC	P-72-R	C-106
13/16	9/16	3/4	2 1/8	1 9/32	15/16	1/2	5770 25670	3440 15300	WPS-107-GRC	P-72-R	C-107
7/8	9/16	3/4	2 3/8	1 3/8	1	1/2	6540 29110	4020 17900	WPS-108-GRC	P-80-R	C-108
7/8	9/16	3/4	2 3/8	1 3/8	1	1/2	6540 29110	4020 17900	WPS-109-GRC	P-80-R	C-109
15/16	9/16	3/4	2 1/2	1 3/16	1 1/16	1/2	7020 31240	4570 20320	WPS-110-GRC	P-85-R	C-110
15/16	9/16	3/4	2 1/2	1 3/16	1 1/16	1/2	7020 31240	4570 20320	WPS-111-GRC	P-85-R	C-111
15/16	9/16	3/4	2 1/2	1 3/16	1 1/16	1/2	7020 31240	4570 20320	WPS-112-GRC	P-85-R	C-112

① DIMENSIONS FOR HIGH CENTERLINE; ADD SUFFIX "S" TO UNIT NUMBER AND HOUSING NUMBER.

§ NOT NECESSARILY A STOCK ITEM – CHECK FOR AVAILABILITY.

**PWG—Cast Iron Pillow Blocks  
Wide Inner Ring Bearings  
VANGUARD® Wide Single, Double and Triple Lip Seals**



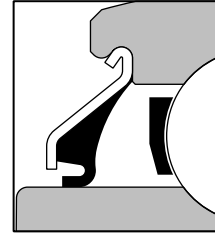
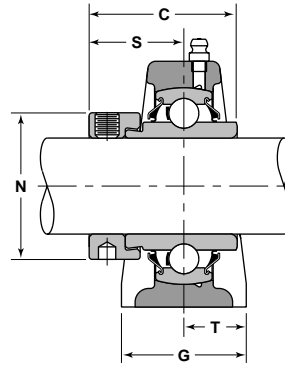
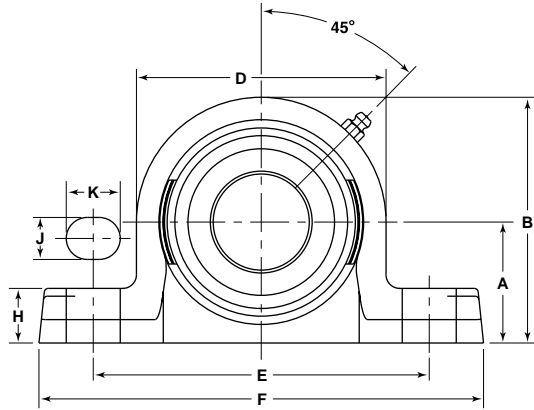
VANGUARD® "G" SEAL

Unit With Vanguard "G" Seal	Shaft Diameter	Basic Outer Ring	A	A $\text{⊕}$	B	B $\text{⊕}$	C	D	E	F	G
PWG-1 $1\frac{13}{16}$ -R	$1\frac{13}{16}$	210	$2\frac{3}{16}$	$2\frac{1}{4}$	$4\frac{7}{16}$	$4\frac{1}{2}$	$2\frac{15}{32}$	$4\frac{1}{2}$	$6\frac{1}{4}$	8	$2\frac{1}{4}$
PWG-1 $1\frac{7}{8}$ -R	$1\frac{7}{8}$	210	$2\frac{3}{16}$	$2\frac{1}{4}$	$4\frac{7}{16}$	$4\frac{1}{2}$	$2\frac{15}{32}$	$4\frac{1}{2}$	$6\frac{1}{4}$	8	$2\frac{1}{4}$
PWG-1 $1\frac{15}{16}$ -R	$1\frac{15}{16}$	210	$2\frac{3}{16}$	$2\frac{1}{4}$	$4\frac{7}{16}$	$4\frac{1}{2}$	$2\frac{15}{32}$	$4\frac{1}{2}$	$6\frac{1}{4}$	8	$2\frac{1}{4}$
§ PWG-2-2R	2	210	$2\frac{3}{16}$	$2\frac{1}{4}$	$4\frac{7}{16}$	$4\frac{1}{2}$	$2\frac{15}{32}$	$4\frac{1}{2}$	$6\frac{1}{4}$	8	$2\frac{1}{4}$
PWG-2-R	2	211	$2\frac{7}{16}$	$2\frac{1}{2}$	$4\frac{29}{32}$	$4\frac{31}{32}$	$2\frac{13}{16}$	$4\frac{15}{16}$	$7\frac{1}{8}$	$9\frac{1}{8}$	$2\frac{3}{8}$
§ PWG-2 $\frac{1}{8}$ -R	$2\frac{1}{8}$	211	$2\frac{7}{16}$	$2\frac{1}{2}$	$4\frac{29}{32}$	$4\frac{31}{32}$	$2\frac{13}{16}$	$4\frac{15}{16}$	$7\frac{1}{8}$	$9\frac{1}{8}$	$2\frac{3}{8}$
PWG-2 $\frac{3}{16}$ -R	$2\frac{3}{16}$	211	$2\frac{7}{16}$	$2\frac{1}{2}$	$4\frac{29}{32}$	$4\frac{31}{32}$	$2\frac{13}{16}$	$4\frac{15}{16}$	$7\frac{1}{8}$	$9\frac{1}{8}$	$2\frac{3}{8}$
PWG-2 $\frac{1}{4}$ -R	$2\frac{1}{4}$	212	$2\frac{11}{16}$	$2\frac{3}{4}$	$5\frac{3}{8}$	$5\frac{7}{16}$	$3\frac{1}{16}$	$5\frac{3}{8}$	$7\frac{1}{2}$	$9\frac{1}{2}$	$2\frac{1}{2}$
PWG-2 $\frac{7}{16}$ -R	$2\frac{7}{16}$	212	$2\frac{11}{16}$	$2\frac{3}{4}$	$5\frac{3}{8}$	$5\frac{7}{16}$	$3\frac{1}{16}$	$5\frac{3}{8}$	$7\frac{1}{2}$	$9\frac{1}{2}$	$2\frac{1}{2}$

⊕ DIMENSIONS FOR HIGH CENTERLINE; ADD SUFFIX "S" TO UNIT NUMBER AND HOUSING NUMBER.

§ NOT NECESSARILY A STOCK ITEM – CHECK FOR AVAILABILITY.

## PWG—Cast Iron Pillow Blocks Wide Inner Ring Bearings VANGUARD® Wide Single, Double and Triple Lip Seals



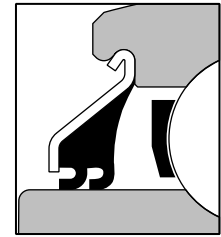
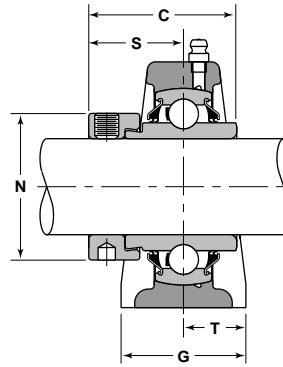
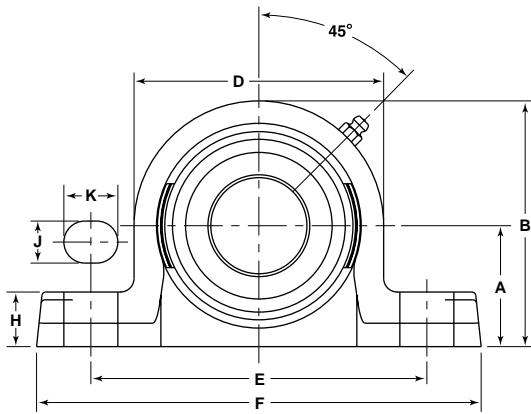
VANGUARD® "G" SEAL

H	J	K	N	S	T	Bolt Size	Basic Load Ratings		Bearing Number®	Housing Number	Collar Number
							Dynamic C	Static C <sub>0</sub>			
Inch							lbs/N				
1	9/16	3/4	3 3/4	1 1/2	1 1/8	1/2	7890 35070	5210 23180	WPS-113-GRC	P-90-R	C-113
1	9/16	3/4	3 3/4	1 1/2	1 1/8	1/2	7890 35070	5210 23180	WPS-114-GRC	P-90-R	C-114
1	9/16	3/4	3 3/4	1 1/2	1 1/8	1/2	7890 35070	5210 23180	WPS-115-GRC	P-90-R	C-115
1	9/16	3/4	3 3/4	1 1/2	1 1/8	1/2	7890 35070	5210 23180	WPS-115-GR2C	P-90-R	C-115-2
1 1/16	11/16	15/16	3	1 23/32	1 3/16	5/8	9750 43380	6570 29220	WPS-200-GRC	P-100-R	C-200
1 1/16	11/16	15/16	3	1 23/32	1 3/16	5/8	9750 43380	6570 29220	WPS-202-GRC	P-100-R	C-202
1 1/16	11/16	15/16	3	1 23/32	1 3/16	5/8	9750 43380	6570 29220	WPS-203-GRC	P-100-R	C-203
1 1/8	11/16	15/16	3 5/16	1 27/32	1 1/4	5/8	10740 47760	7400 32930	WPS-204-GRC	P-110-R	C-204
1 1/8	11/16	15/16	3 5/16	1 27/32	1 1/4	5/8	10740 47760	7400 32930	WPS-207-GRC	P-110-R	C-207

① DIMENSIONS FOR HIGH CENTERLINE; ADD SUFFIX "S" TO UNIT NUMBER AND HOUSING NUMBER.

§ NOT NECESSARILY A STOCK ITEM – CHECK FOR AVAILABILITY.

PHV & PWV—Cast Iron Pillow Blocks



VANGUARD® "V" SEAL

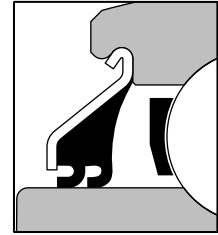
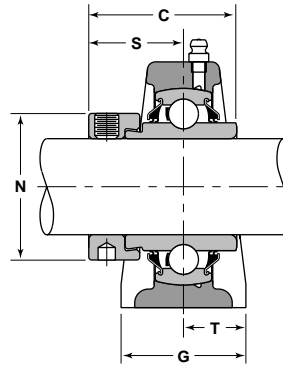
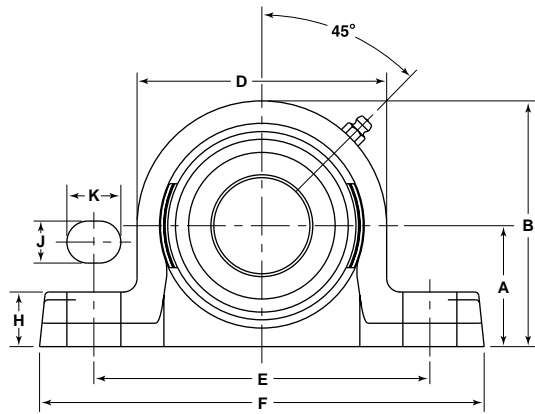
Unit With Vanguard "G" Seal	Shaft Diameter	Basic Outer Ring	A	A⊙	B	B⊙	C	D	E	F	G
§ PWV-3/4-R	3/4	204	1 1/4	1 5/16	2 1/2	2 9/16	1 23/32	2 1/2	3 7/8	5 1/4	1 1/2
§ PWV-13/16-R	13/16	205	1 5/16	1 7/16	2 11/16	2 13/16	1 3/4	2 3/4	4 1/8	5 1/2	1 5/8
§ PWV-7/8-R	7/8	205	1 5/16	1 7/16	2 11/16	2 13/16	1 3/4	2 3/4	4 1/8	5 1/2	1 5/8
§ PWV-15/16-R	15/16	205	1 5/16	1 7/16	2 11/16	2 13/16	1 3/4	2 3/4	4 1/8	5 1/2	1 5/8
§ PWV-1-R	1	205	1 5/16	1 7/16	2 11/16	2 13/16	1 3/4	2 3/4	4 1/8	5 1/2	1 5/8
§ PWV-1 1/16-RM	1 1/16	206	1 9/16	1 11/16	3 5/32	3 9/32	1 29/32	3 3/16	4 3/4	6 5/16	1 3/4
PHV-1 1/8-R ⊙	1 1/8	206	1 9/16	1 11/16	3 5/32	3 9/32	1 29/32	3 3/16	4 3/4	6 5/16	1 3/4
§ PWV-1 1/8-R	1 1/8	206	1 9/16	1 11/16	3 5/32	3 9/32	1 29/32	3 3/16	4 3/4	6 5/16	1 3/4
§ PWV-1 3/16-RM	1 3/16	206	1 9/16	1 11/16	3 5/32	3 9/32	1 29/32	3 3/16	4 3/4	6 5/16	1 3/4
§ PWV-1 1/4-2R	1 1/4	206	1 9/16	1 11/16	3 5/32	3 9/32	1 29/32	3 3/16	4 3/4	6 5/16	1 3/4
§ PWV-1 1/4-R	1 1/4	207	1 13/16	1 7/8	3 5/8	3 11/16	2 1/64	3 5/8	5	6 9/16	1 7/8
§ PWV-1 5/16-RM	1 5/16	207	1 13/16	1 7/8	3 5/8	3 11/16	2 1/64	3 5/8	5	6 9/16	1 7/8
§ PWV-1 3/8-R	1 3/8	207	1 13/16	1 7/8	3 5/8	3 11/16	2 1/64	3 5/8	5	6 9/16	1 7/8
§ PWV-1 7/16-R	1 7/16	207	1 13/16	1 7/8	3 5/8	3 11/16	2 1/64	3 5/8	5	6 9/16	1 7/8
§ PWV-1 1/2-R	1 1/2	208	1 15/16	2	3 15/16	4	2 7/32	4	5 1/2	7 1/8	2
§ PWV-1 9/16-R	1 9/16	208	1 15/16	2	3 15/16	4	2 7/32	4	5 1/2	7 1/8	2
§ PWV-1 5/8-R	1 5/8	209	2 1/16	2 1/8	4 3/16	4 1/4	2 7/32	4 1/4	5 3/4	7 1/2	2 1/8
§ PWV-1 11/16-R	1 11/16	209	2 1/16	2 1/8	4 3/16	4 1/4	2 7/32	4 1/4	5 3/4	7 1/2	2 1/8
§ PWV-1 3/4-R	1 3/4	209	2 1/16	2 1/8	4 3/16	4 1/4	2 7/32	4 1/4	5 3/4	7 1/2	2 1/8

⊙ DIMENSIONS FOR HIGH CENTERLINE; ADD SUFFIX "S" TO UNIT NUMBER AND HOUSING NUMBER.

⊙ HEX BORE, NO COLLAR REQUIRED.

§ NOT NECESSARILY A STOCK ITEM – CHECK FOR AVAILABILITY.

## PHV & PWV—Cast Iron Pillow Blocks



VANGUARD® "V" SEAL

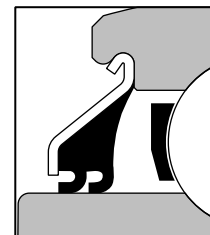
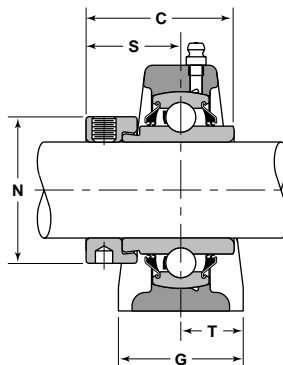
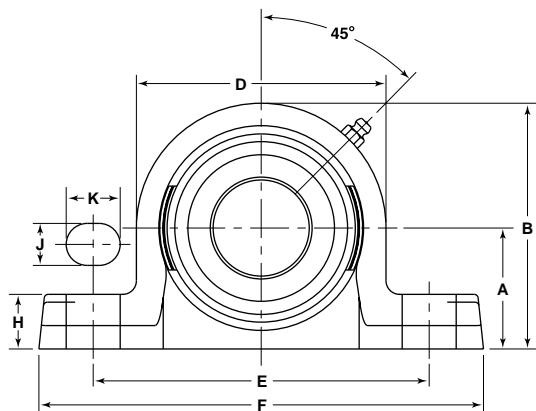
H	J	K	N	S	T	Bolt Size	Basic Load Ratings		Bearing Number <sup>Ⓜ</sup>	Housing Number	Collar Number
							Dynamic C	Static C <sub>0</sub>			
Inch							lbs/N				
9/16	9/16	5/8	1 5/16	1 3/64	3/4	3/8	2880 12790	1480 6580	WPS-012-VRC	P-47-R	C-012
5/8	7/16	5/8	1 1/2	1 1/16	13/16	3/8	3150 14010	1760 7830	WPS-013-VRC	P-52-R	C-013
5/8	7/16	5/8	1 1/2	1 1/16	13/16	3/8	3150 14010	1760 7830	WPS-014-VRC	P-52-R	C-014
5/8	7/16	5/8	1 1/2	1 1/16	13/16	3/8	3150 14010	1760 7830	WPS-015-VRC	P-52-R	C-015
5/8	7/16	5/8	1 1/2	1 1/16	13/16	3/8	3150 14010	1760 7830	WPS-100-VRC	P-52-R	C-100
3/4	9/16	3/4	1 3/4	1 3/16	7/8	1/2	4370 19450	2530 11260	WPS-101-VRC	P-62-R	C-101
3/4	9/16	3/4	1 3/4	1 3/16	7/8	1/2	4370 19450	2530 11260	HPS-102-VR	P-62-R	—
3/4	9/16	3/4	1 3/4	1 3/16	7/8	1/2	4370 19450	2530 11260	WPS-102-VRC	P-62-R	C-102
3/4	9/16	3/4	1 3/4	1 3/16	7/8	1/2	4370 19450	2530 11260	WPS-103-VRC	P-62-R	C-103
3/4	9/16	3/4	1 3/4	1 3/16	7/8	1/2	4370 19450	2530 11260	WPS-103-VR2C	P-62-R	C-103-2
13/16	9/16	3/4	2 1/8	1 9/32	15/16	1/2	5770 25670	3440 15300	WPS-104-VRC	P-72-R	C-104
13/16	9/16	3/4	2 1/8	1 9/32	15/16	1/2	5770 25670	3440 15300	WPS-105-VRC	P-72-R	C-105
13/16	9/16	3/4	2 1/8	1 9/32	15/16	1/2	5770 25670	3440 15300	WPS-106-VRC	P-72-R	C-106
13/16	9/16	3/4	2 1/8	1 9/32	15/16	1/2	5770 25670	3440 15300	WPS-107-VRC	P-72-R	C-107
7/8	9/16	3/4	2 3/8	1 3/8	1	1/2	6540 29110	4020 17900	WPS-108-VRC	P-80-R	C-108
7/8	9/16	3/4	2 3/8	1 3/8	1	1/2	6540 29110	4020 17900	WPS-109-VRC	P-80-R	C-109
15/16	9/16	3/4	2 1/2	1 3/8	1 1/16	1/2	7020 31240	4570 20320	WPS-110-VRC	P-85-R	C-110
15/16	9/16	3/4	2 1/2	1 3/8	1 1/16	1/2	7020 31240	4570 20320	WPS-111-VRC	P-85-R	C-111
15/16	9/16	3/4	2 1/2	1 3/8	1 1/16	1/2	7020 31240	4570 20320	WPS-112-VRC	P-85-R	C-112

Ⓛ DIMENSIONS FOR HIGH CENTERLINE; ADD SUFFIX "S" TO UNIT NUMBER AND HOUSING NUMBER.

Ⓜ HEX BORE, NO COLLAR REQUIRED.

§ NOT NECESSARILY A STOCK ITEM – CHECK FOR AVAILABILITY.

PHV & PWV—Cast Iron Pillow Blocks



VANGUARD® "V" SEAL

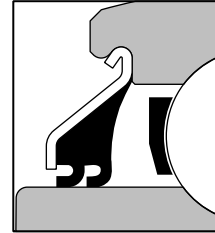
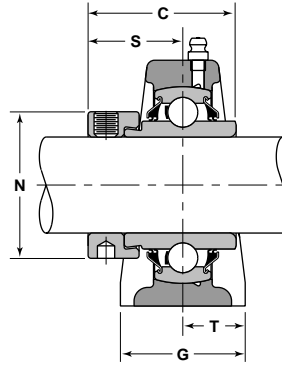
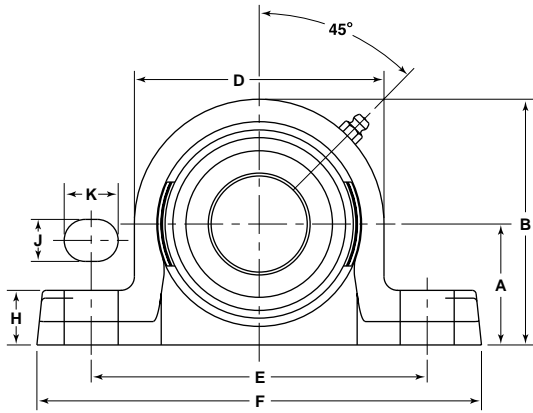
Unit With Vanguard "G" Seal	Shaft Diameter	Basic Outer Ring	A	A <sup>ⓐ</sup>	B	B <sup>ⓐ</sup>	C	D	E	F	G
§ PWV-1 1 <sup>3</sup> / <sub>16</sub> -R	1 1 <sup>3</sup> / <sub>16</sub>	210	2 3 <sup>3</sup> / <sub>16</sub>	2 1 <sup>4</sup> / <sub>4</sub>	4 7 <sup>1</sup> / <sub>16</sub>	4 1 <sup>2</sup> / <sub>2</sub>	2 15 <sup>5</sup> / <sub>32</sub>	4 1 <sup>2</sup> / <sub>2</sub>	6 1 <sup>4</sup> / <sub>4</sub>	8	2 1 <sup>4</sup> / <sub>4</sub>
§ PWV-1 7 <sup>7</sup> / <sub>8</sub> -R	1 7 <sup>7</sup> / <sub>8</sub>	210	2 3 <sup>3</sup> / <sub>16</sub>	2 1 <sup>4</sup> / <sub>4</sub>	4 7 <sup>1</sup> / <sub>16</sub>	4 1 <sup>2</sup> / <sub>2</sub>	2 15 <sup>5</sup> / <sub>32</sub>	4 1 <sup>2</sup> / <sub>2</sub>	6 1 <sup>4</sup> / <sub>4</sub>	8	2 1 <sup>4</sup> / <sub>4</sub>
§ PWV-1 15 <sup>15</sup> / <sub>16</sub> -R	1 15 <sup>15</sup> / <sub>16</sub>	210	2 3 <sup>3</sup> / <sub>16</sub>	2 1 <sup>4</sup> / <sub>4</sub>	4 7 <sup>1</sup> / <sub>16</sub>	4 1 <sup>2</sup> / <sub>2</sub>	2 15 <sup>5</sup> / <sub>32</sub>	4 1 <sup>2</sup> / <sub>2</sub>	6 1 <sup>4</sup> / <sub>4</sub>	8	2 1 <sup>4</sup> / <sub>4</sub>
§ PWV-2-2R	2	210	2 3 <sup>3</sup> / <sub>16</sub>	2 1 <sup>4</sup> / <sub>4</sub>	4 7 <sup>1</sup> / <sub>16</sub>	4 1 <sup>2</sup> / <sub>2</sub>	2 15 <sup>5</sup> / <sub>32</sub>	4 1 <sup>2</sup> / <sub>2</sub>	6 1 <sup>4</sup> / <sub>4</sub>	8	2 1 <sup>4</sup> / <sub>4</sub>

ⓐ DIMENSIONS FOR HIGH CENTERLINE; ADD SUFFIX "S" TO UNIT NUMBER AND HOUSING NUMBER.

ⓑ HEX BORE, NO COLLAR REQUIRED.

§ NOT NECESSARILY A STOCK ITEM – CHECK FOR AVAILABILITY.

## PHV & PWV—Cast Iron Pillow Blocks



VANGUARD® "V" SEAL

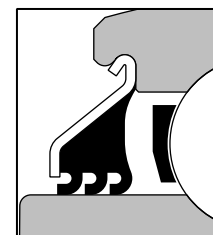
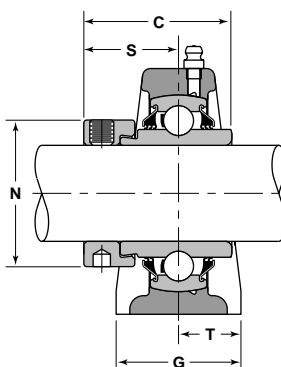
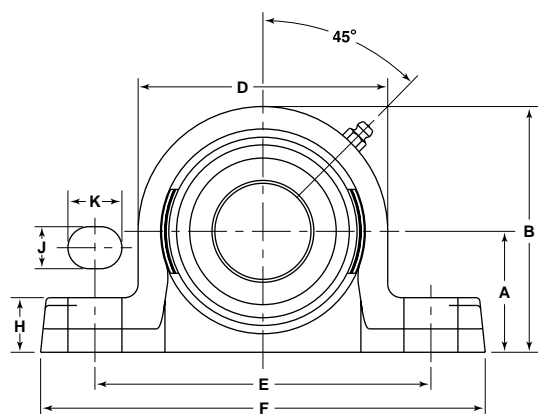
H	J	K	N	S	T	Bolt Size	Basic Load Ratings		Bearing Number <sup>Ⓢ</sup>	Housing Number	Collar Number
							Dynamic C	Static C <sub>0</sub>			
Inch							lbs/N				
1	9/16	3/4	3 3/4	1 1/2	1 1/8	1/8	7890 35070	5210 23180	WPS-113-VRC	P-90-R	C-113
1	9/16	3/4	3 3/4	1 1/2	1 1/8	1/8	7890 35070	5210 23180	WPS-114-VRC	P-90-R	C-114
1	9/16	3/4	3 3/4	1 1/2	1 1/8	1/8	7890 35070	5210 23180	WPS-115-VRC	P-90-R	C-115
1	9/16	3/4	3 3/4	1 1/2	1 1/8	1/8	7890 35070	5210 23180	WPS-115-VR2C	P-90-R	C-115-2

① DIMENSIONS FOR HIGH CENTERLINE; ADD SUFFIX "S" TO UNIT NUMBER AND HOUSING NUMBER.

Ⓢ HEX BORE, NO COLLAR REQUIRED.

§ NOT NECESSARILY A STOCK ITEM – CHECK FOR AVAILABILITY.

PWT—Cast Iron Pillow Blocks



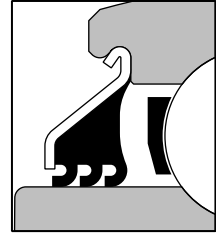
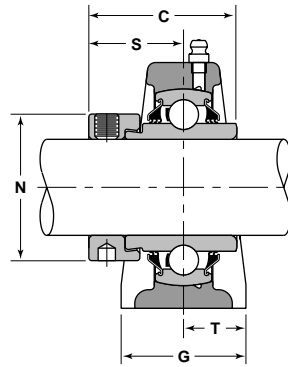
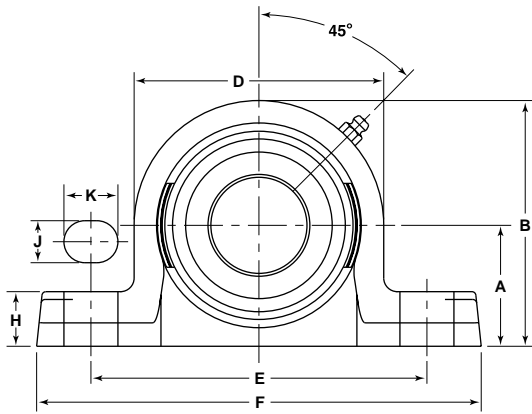
VANGUARD® "T" SEAL

Unit With Vanguard "G" Seal	Shaft Diameter	Basic Outer Ring	A	A $\ominus$	B	B $\ominus$	C	D	E	F	G
§ PWT-1 $\frac{1}{16}$ -R	$\frac{13}{16}$	205	1 $\frac{5}{16}$	1 $\frac{7}{16}$	2 $\frac{11}{16}$	2 $\frac{13}{16}$	1 $\frac{3}{4}$	2 $\frac{3}{4}$	4 $\frac{1}{8}$	5 $\frac{1}{2}$	1 $\frac{5}{8}$
§ PWT- $\frac{7}{8}$ -R	$\frac{7}{8}$	205	1 $\frac{5}{16}$	1 $\frac{7}{16}$	2 $\frac{11}{16}$	2 $\frac{13}{16}$	1 $\frac{3}{4}$	2 $\frac{3}{4}$	4 $\frac{1}{8}$	5 $\frac{1}{2}$	1 $\frac{5}{8}$
§ PWT-1 $\frac{5}{16}$ -R	$\frac{15}{16}$	205	1 $\frac{5}{16}$	1 $\frac{7}{16}$	2 $\frac{11}{16}$	2 $\frac{13}{16}$	1 $\frac{3}{4}$	2 $\frac{3}{4}$	4 $\frac{1}{8}$	5 $\frac{1}{2}$	1 $\frac{5}{8}$
PWT-1-R	1	205	1 $\frac{5}{16}$	1 $\frac{7}{16}$	2 $\frac{11}{16}$	2 $\frac{13}{16}$	1 $\frac{3}{4}$	2 $\frac{3}{4}$	4 $\frac{1}{8}$	5 $\frac{1}{2}$	1 $\frac{5}{8}$
§ PWT-1 $\frac{1}{16}$ -RM	1 $\frac{1}{16}$	206	1 $\frac{9}{16}$	1 $\frac{11}{16}$	3 $\frac{5}{32}$	3 $\frac{9}{32}$	1 $\frac{29}{32}$	3 $\frac{3}{16}$	4 $\frac{3}{4}$	6 $\frac{5}{16}$	1 $\frac{3}{4}$
§ PWT-1 $\frac{1}{8}$ -R	1 $\frac{1}{8}$	206	1 $\frac{9}{16}$	1 $\frac{11}{16}$	3 $\frac{5}{32}$	3 $\frac{9}{32}$	1 $\frac{29}{32}$	3 $\frac{3}{16}$	4 $\frac{3}{4}$	6 $\frac{5}{16}$	1 $\frac{3}{4}$
§ PWT-1 $\frac{3}{16}$ -RM	1 $\frac{3}{16}$	206	1 $\frac{9}{16}$	1 $\frac{11}{16}$	3 $\frac{5}{32}$	3 $\frac{9}{32}$	1 $\frac{29}{32}$	3 $\frac{3}{16}$	4 $\frac{3}{4}$	6 $\frac{5}{16}$	1 $\frac{3}{4}$
§ PWT-1 $\frac{1}{4}$ -2R	1 $\frac{1}{4}$	206	1 $\frac{9}{16}$	1 $\frac{11}{16}$	3 $\frac{5}{32}$	3 $\frac{9}{32}$	1 $\frac{29}{32}$	3 $\frac{3}{16}$	4 $\frac{3}{4}$	6 $\frac{5}{16}$	1 $\frac{3}{4}$
PWT-1 $\frac{1}{4}$ -R	1 $\frac{1}{4}$	207	1 $\frac{13}{16}$	1 $\frac{7}{8}$	3 $\frac{5}{8}$	3 $\frac{11}{16}$	2 $\frac{1}{64}$	3 $\frac{5}{8}$	5	6 $\frac{9}{16}$	1 $\frac{7}{8}$
§ PWT-1 $\frac{5}{16}$ -RM	1 $\frac{5}{16}$	207	1 $\frac{13}{16}$	1 $\frac{7}{8}$	3 $\frac{5}{8}$	3 $\frac{11}{16}$	2 $\frac{1}{64}$	3 $\frac{5}{8}$	5	6 $\frac{9}{16}$	1 $\frac{7}{8}$
§ PWT-1 $\frac{3}{8}$ -R	1 $\frac{3}{8}$	207	1 $\frac{13}{16}$	1 $\frac{7}{8}$	3 $\frac{5}{8}$	3 $\frac{11}{16}$	2 $\frac{1}{64}$	3 $\frac{5}{8}$	5	6 $\frac{9}{16}$	1 $\frac{7}{8}$
PWT-1 $\frac{7}{16}$ -R	1 $\frac{7}{16}$	207	1 $\frac{13}{16}$	1 $\frac{7}{8}$	3 $\frac{5}{8}$	3 $\frac{11}{16}$	2 $\frac{1}{64}$	3 $\frac{5}{8}$	5	6 $\frac{9}{16}$	1 $\frac{7}{8}$
§ PWT-1 $\frac{1}{2}$ -R	1 $\frac{1}{2}$	208	1 $\frac{15}{16}$	2	3 $\frac{15}{16}$	4	2 $\frac{7}{32}$	4	5 $\frac{1}{2}$	7 $\frac{1}{8}$	2
§ PWT-1 $\frac{9}{16}$ -R	1 $\frac{9}{16}$	208	1 $\frac{15}{16}$	2	3 $\frac{15}{16}$	4	2 $\frac{7}{32}$	4	5 $\frac{1}{2}$	7 $\frac{1}{8}$	2
§ PWT-1 $\frac{5}{8}$ -R	1 $\frac{5}{8}$	209	2 $\frac{1}{16}$	2 $\frac{1}{8}$	4 $\frac{3}{16}$	4 $\frac{1}{4}$	2 $\frac{7}{32}$	4 $\frac{1}{4}$	5 $\frac{3}{4}$	7 $\frac{1}{2}$	2 $\frac{1}{8}$
PWT-1 $\frac{11}{16}$ -R	1 $\frac{11}{16}$	209	2 $\frac{1}{16}$	2 $\frac{1}{8}$	4 $\frac{3}{16}$	4 $\frac{1}{4}$	2 $\frac{7}{32}$	4 $\frac{1}{4}$	5 $\frac{3}{4}$	7 $\frac{1}{2}$	2 $\frac{1}{8}$
§ PWT-1 $\frac{3}{4}$ -R	1 $\frac{3}{4}$	209	2 $\frac{1}{16}$	2 $\frac{1}{8}$	4 $\frac{3}{16}$	4 $\frac{1}{4}$	2 $\frac{7}{32}$	4 $\frac{1}{4}$	5 $\frac{3}{4}$	7 $\frac{1}{2}$	2 $\frac{1}{8}$
§ PWT-1 $\frac{13}{16}$ -R	1 $\frac{13}{16}$	210	2 $\frac{3}{16}$	2 $\frac{1}{4}$	4 $\frac{7}{16}$	4 $\frac{1}{2}$	2 $\frac{15}{32}$	4 $\frac{1}{2}$	6 $\frac{1}{4}$	8	2 $\frac{1}{4}$
§ PWT-1 $\frac{15}{16}$ -R	1 $\frac{15}{16}$	210	2 $\frac{3}{16}$	2 $\frac{1}{4}$	4 $\frac{7}{16}$	4 $\frac{1}{2}$	2 $\frac{15}{32}$	4 $\frac{1}{2}$	6 $\frac{1}{4}$	8	2 $\frac{1}{4}$

⊖ DIMENSIONS FOR HIGH CENTERLINE; ADD SUFFIX "S" TO UNIT NUMBER AND HOUSING NUMBER.

§ NOT NECESSARILY A STOCK ITEM – CHECK FOR AVAILABILITY.

# PWT—Cast Iron Pillow Blocks



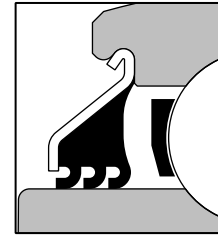
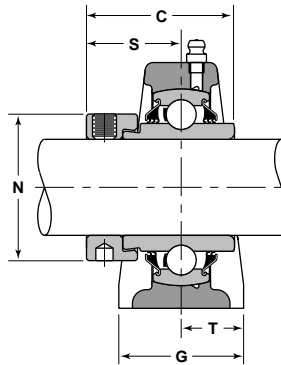
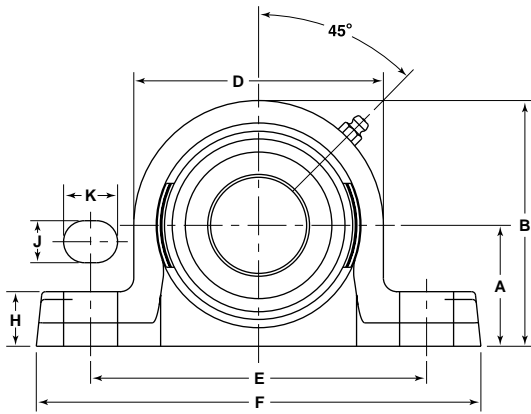
VANGUARD® "T" SEAL

H	J	K	N	S	T	Bolt Size	Basic Load Ratings		Bearing Number®	Housing Number	Collar Number
							Dynamic C	Static C <sub>0</sub>			
Inch							lbs/N				
5/8	7/16	5/8	1 1/2	1 1/16	1 3/16	3/8	3150 14010	1760 7830	WPS-013-TRC	P-52-R	C-013
5/8	7/16	5/8	1 1/2	1 1/16	1 3/16	3/8	3150 14010	1760 7830	WPS-014-TRC	P-52-R	C-014
5/8	7/16	5/8	1 1/2	1 1/16	1 3/16	3/8	3150 14010	1760 7830	WPS-015-TRC	P-52-R	C-015
5/8	7/16	5/8	1 1/2	1 1/16	1 3/16	3/8	3150 14010	1760 7830	WPS-100-TRC	P-52-R	C-100
3/4	9/16	3/4	1 3/4	1 3/16	7/8	1/2	4370 19450	2530 11260	WPS-101-TRC	P-62-R	C-101
3/4	9/16	3/4	1 3/4	1 3/16	7/8	1/2	4370 19450	2530 11260	WPS-102-TRC	P-62-R	C-102
3/4	9/16	3/4	1 3/4	1 3/16	7/8	1/2	4370 19450	2530 11260	WPS-103-TRC	P-62-R	C-103
3/4	9/16	3/4	1 3/4	1 3/16	7/8	1/2	4370 19450	2530 11260	WPS-103-TR2C	P-62-R	C-103-2
13/16	9/16	3/4	2 1/8	1 9/32	15/16	1/2	5770 25670	3440 15300	WPS-104-TRC	P-72-R	C-104
13/16	9/16	3/4	2 1/8	1 9/32	15/16	1/2	5770 25670	3440 15300	WPS-105-TRC	P-72-R	C-105
13/16	9/16	3/4	2 1/8	1 9/32	15/16	1/2	5770 25670	3440 15300	WPS-106-TRC	P-72-R	C-106
13/16	9/16	3/4	2 1/8	1 9/32	15/16	1/2	5770 25670	3440 15300	WPS-107-TRC	P-72-R	C-107
7/8	9/16	3/4	2 3/8	1 3/8	1	1/2	6540 29110	4020 17900	WPS-108-TRC	P-80-R	C-108
7/8	9/16	3/4	2 3/8	1 3/8	1	1/2	6540 29110	4020 17900	WPS-109-TRC	P-80-R	C-109
15/16	9/16	3/4	2 1/2	1 3/8	1 1/16	1/2	7020 31240	4570 20320	WPS-110-TRC	P-85-R	C-110
15/16	9/16	3/4	2 1/2	1 3/8	1 1/16	1/2	7020 31240	4570 20320	WPS-111-TRC	P-85-R	C-111
15/16	9/16	3/4	2 1/2	1 3/8	1 1/16	1/2	7020 31240	4570 20320	WPS-112-TRC	P-85-R	C-112
1	9/16	3/4	3 3/4	1 1/2	1 1/8	1/2	7890 35070	5210 23180	WPS-113-TRC	P-90-R	C-113
1	9/16	3/4	3 3/4	1 1/2	1 1/8	1/2	7890 35070	5210 23180	WPS-115-TRC	P-90-R	C-115

① DIMENSIONS FOR HIGH CENTERLINE; ADD SUFFIX "S" TO UNIT NUMBER AND HOUSING NUMBER.

§ NOT NECESSARILY A STOCK ITEM – CHECK FOR AVAILABILITY.

PWT—Cast Iron Pillow Blocks



VANGUARD® "T" SEAL

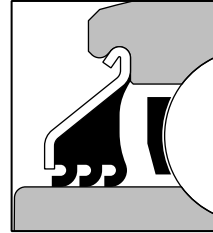
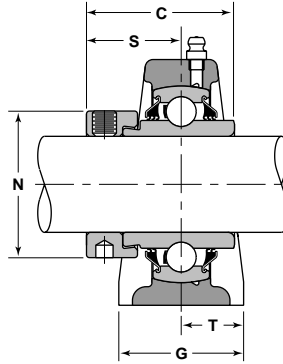
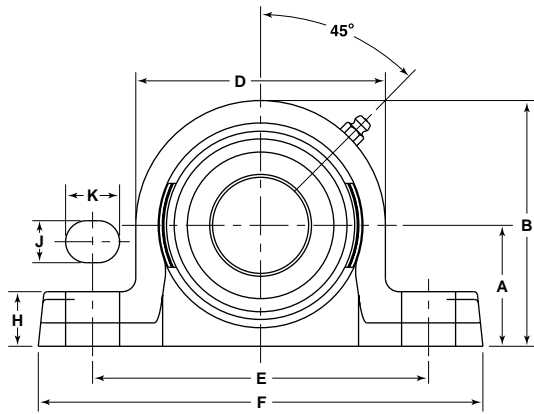
Unit With Vanguard "G" Seal	Shaft Diameter	Basic Outer Ring	A	A <sup>ⓐ</sup>	B	B <sup>ⓐ</sup>	C	D	E	F	G
§ PWT-2-2R	2	210	2 3/16	2 1/4	4 7/16	4 1/2	2 15/32	4 1/2	6 1/4	8	2 1/4
§ PWT-2-R	2	211	2 7/16	2 1/2	4 29/32	4 31/32	2 13/16	4 15/16	7 1/8	9 1/8	2 3/8
§ PWT-2 1/8-R	2 1/8	211	2 7/16	2 1/2	4 29/32	4 31/32	2 13/16	4 15/16	7 1/8	9 1/8	2 3/8
§ PWT-2 3/16-R	2 3/16	211	2 7/16	2 1/2	4 29/32	4 31/32	2 13/16	4 15/16	7 1/8	9 1/8	2 3/8
§ PWT-2 1/4-R	2 1/4	212	2 11/16	2 3/4	5 3/8	5 7/16	3 1/16	5 3/8	7 1/2	9 1/2	2 1/2
§ PWT-2 7/16-R	2 7/16	212	2 11/16	2 3/4	5 3/8	5 7/16	3 1/16	5 3/8	7 1/2	9 1/2	2 1/2

ⓐ DIMENSIONS FOR HIGH CENTERLINE; ADD SUFFIX "S" TO UNIT NUMBER AND HOUSING NUMBER.

ⓑ HEX BORE, NO COLLAR REQUIRED.

§ NOT NECESSARILY A STOCK ITEM – CHECK FOR AVAILABILITY.

## PWT—Cast Iron Pillow Blocks



VANGUARD® "T" SEAL

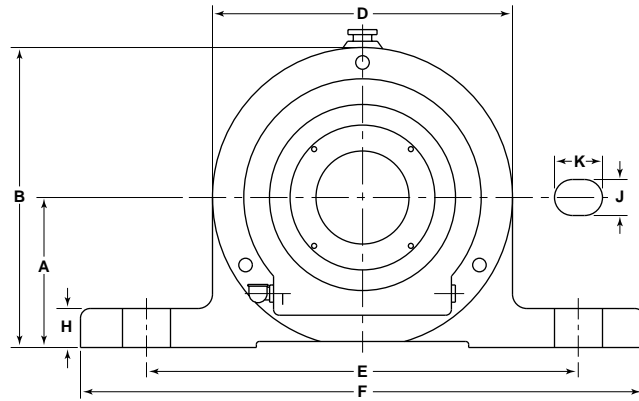
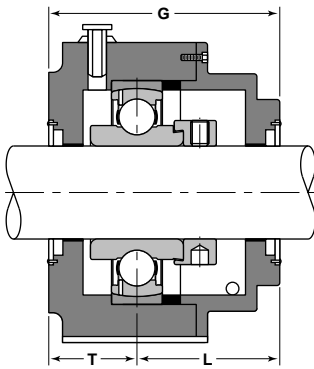
H	J	K	N	S	T	Bolt Size	Basic Load Ratings		Bearing Number <sup>ⓐ</sup>	Housing Number	Collar Number
							Dynamic C	Static C <sub>0</sub>			
Inch							lbs/N				
1	9/16	3/4	3 3/4	1 1/2	1 1/8	1/2	7890 35070	5210 23180	WPS-115-TR2C	P-90-R	C-115-2
1 1/16	11/16	15/16	3	1 23/32	1 3/16	5/8	9750 43380	6570 29220	WPS-200-TRC	P-100-R	C-200
1 1/16	11/16	15/16	3	1 23/32	1 3/16	5/8	9750 43380	6570 29220	WPS-202-TRC	P-100-R	C-202
1 1/16	11/16	15/16	3	1 23/32	1 3/16	5/8	9750 43380	6570 29220	WPS-203-TRC	P-100-R	C-203
1 1/8	11/16	15/16	3 5/16	1 27/32	1 1/4	5/8	10740 47760	7400 32930	WPS-204-TRC	P-110-R	C-204
1 1/8	11/16	15/16	3 5/16	1 27/32	1 1/4	5/8	10740 47760	7400 32930	WPS-207-TRC	P-110-R	C-207

ⓐ DIMENSIONS FOR HIGH CENTERLINE; ADD SUFFIX "S" TO UNIT NUMBER AND HOUSING NUMBER.

ⓑ HEX BORE, NO COLLAR REQUIRED.

§ NOT NECESSARILY A STOCK ITEM – CHECK FOR AVAILABILITY.

**PWOL—Fixed and Floating Heavy Series Pillow Block Units**

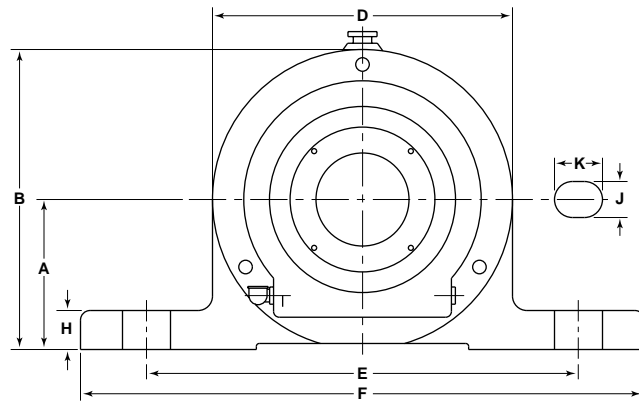
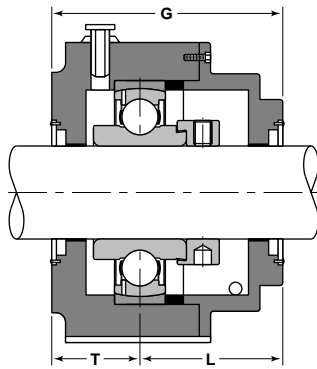


Unit Number	Shaft Diameter	Basic Outer Ring	A	B	D	E	F	G	H	J	K
PWOL-1 15/16-R	1 15/16	310	3 1/8	6 1/4	5 7/16	9	11 3/8	4 13/16	13/16	3/4	1
§ PWOL-2-R	2	311	3 3/4	7 1/8	6 3/4	10 1/4	12 5/8	5 1/2	1 1/16	7/8	1 1/4
PWOL-2 3/16-R	2 3/16	311	3 3/4	7 1/8	6 3/4	10 1/4	12 5/8	5 1/2	1 1/16	7/8	1 1/4
PWOL-2 7/16-R	2 7/16	312	4 1/8	7 7/8	7 1/2	11 1/4	13 3/4	5 29/32	1 1/16	7/8	1 1/4
PWOL-2 11/16-R	2 11/16	314	4 9/16	8 13/16	8 1/2	12	15 3/8	6 7/8	1 1/4	1	1 1/4
PWOL-2 15/16-R	2 15/16	315	4 9/16	9	8 7/8	12 3/8	15 3/8	7	1 1/4	1	1 1/4
PWOL-3 3/16-R	3 3/16	316	4 9/16	9 5/16	9 1/2	12 3/8	15 3/8	7 1/4	1 1/4	1	1 1/4
PWOL-3 7/16-R	3 7/16	318	5 1/8	10 1/4	10 1/4	13 3/8	16 1/8	7 1/2	1 1/4	1	1 1/4
PWOL-3 15/16-R	3 15/16	320	6	11 7/8	11 3/4	15 1/2	18 1/2	8 21/32	1 3/8	1 1/8	1 1/2

● INCLUDES WPSH-C BEARING ASSEMBLED WITH ALIGNING RING (SEE PAGE 178).

§ NOT NECESSARILY A STOCK ITEM – CHECK FOR AVAILABILITY.

## PWOL—Fixed and Floating Heavy Series Pillow Block Units

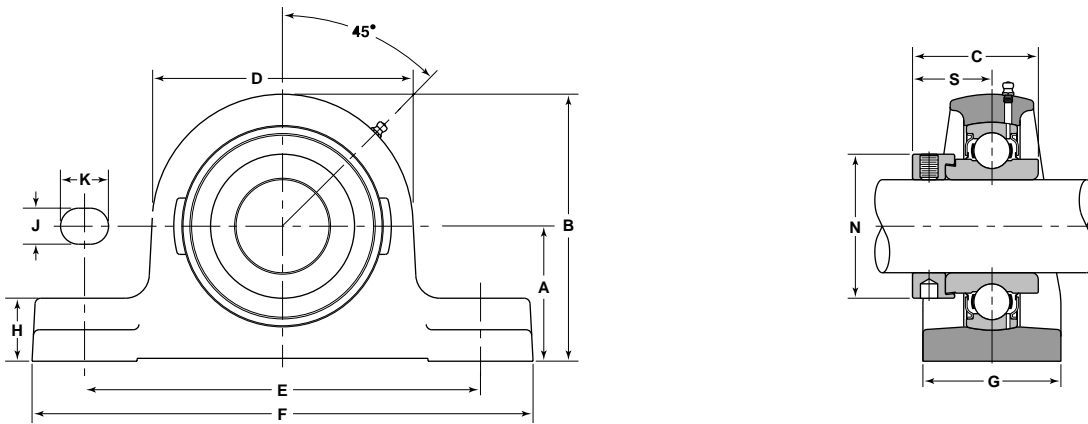


L	T	Axial Float	Basic Load Ratings		Bearing Number <sup>①</sup>	Collar Number
			Dynamic C	Static C <sub>0</sub>		
Inch			lbs/N			
2 <sup>29</sup> / <sub>32</sub>	1 <sup>29</sup> / <sub>32</sub>	<sup>3</sup> / <sub>8</sub>	13900 61810	8510 37850	WPSH-115-AC	CH-115
3 <sup>1</sup> / <sub>4</sub>	2 <sup>1</sup> / <sub>4</sub>	<sup>23</sup> / <sub>64</sub>	16070 71470	10020 44570	WPSH-200-AC	CH-200
3 <sup>1</sup> / <sub>4</sub>	2 <sup>1</sup> / <sub>4</sub>	<sup>23</sup> / <sub>64</sub>	16070 71470	10020 44570	WPSH-203-AC	CH-203
3 <sup>19</sup> / <sub>32</sub>	2 <sup>5</sup> / <sub>16</sub>	<sup>11</sup> / <sub>32</sub>	18380 81750	11660 51850	WPSH-207-AC	CH-207
4 <sup>5</sup> / <sub>16</sub>	2 <sup>9</sup> / <sub>16</sub>	<sup>3</sup> / <sub>8</sub>	23410 104130	15300 68040	WPSH-211-AC	CH-211
4 <sup>1</sup> / <sub>8</sub>	2 <sup>7</sup> / <sub>8</sub>	<sup>1</sup> / <sub>2</sub>	25500 113420	17300 76960	WPSH-215-AC	CH-215
4 <sup>1</sup> / <sub>4</sub>	3	<sup>33</sup> / <sub>64</sub>	27640 122940	19450 86500	WPSH-303-AC	CH-303
4 <sup>3</sup> / <sub>8</sub>	3 <sup>1</sup> / <sub>8</sub>	<sup>17</sup> / <sub>32</sub>	32060 142610	24110 107230	WPSH-307-AC	CH-307
5	3 <sup>21</sup> / <sub>32</sub>	<sup>11</sup> / <sub>16</sub>	38890 173000	31560 140400	WPSH-315-AC	CH-315

① INCLUDES WPSH-C BEARING ASSEMBLED WITH ALIGNING RING (SEE PAGE 178).

§ NOT NECESSARILY A STOCK ITEM – CHECK FOR AVAILABILITY.

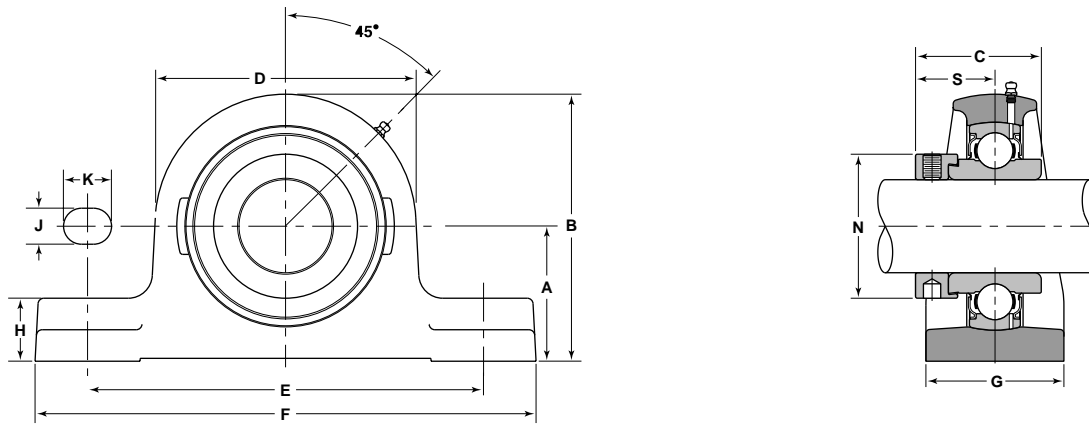
**PWRH-R—Heavy Series  
Low Base-To-Center Pillow Block Units**



Unit Number	Shaft Diameter	Basic Outer Ring	A	B	C	D	E	F	G	H	J
PWRH-1 1 <sup>5</sup> / <sub>16</sub> -R	1 1 <sup>5</sup> / <sub>16</sub>	310	2 1 <sup>3</sup> / <sub>16</sub>	5 9/ <sub>16</sub>	2 5/ <sub>8</sub>	5 7/ <sub>16</sub>	8 1/ <sub>4</sub>	10 7/ <sub>16</sub>	2 7/ <sub>8</sub>	1 5/ <sub>16</sub>	3/ <sub>4</sub>
PWRH-2-R	2	311	3 1/ <sub>16</sub>	6 1/ <sub>32</sub>	2 7/ <sub>8</sub>	5 1 <sup>5</sup> / <sub>16</sub>	9	11 5/ <sub>16</sub>	3 1/ <sub>8</sub>	1 7/ <sub>16</sub>	7/ <sub>8</sub>
PWRH-2 3/ <sub>16</sub> -R	2 3/ <sub>16</sub>	311	3 1/ <sub>16</sub>	6 1/ <sub>32</sub>	2 7/ <sub>8</sub>	5 1 <sup>5</sup> / <sub>16</sub>	9	11 5/ <sub>16</sub>	3 1/ <sub>8</sub>	1 7/ <sub>16</sub>	7/ <sub>8</sub>
PWRH-2 7/ <sub>16</sub> -R	2 7/ <sub>16</sub>	312	3 5/ <sub>16</sub>	6 1 <sup>7</sup> / <sub>32</sub>	3 1/ <sub>8</sub>	6 7/ <sub>16</sub>	9 3/ <sub>4</sub>	12 5/ <sub>16</sub>	3 5/ <sub>16</sub>	1 1/ <sub>2</sub>	7/ <sub>8</sub>
PWRH-2 1 <sup>1</sup> / <sub>16</sub> -R	2 1 <sup>1</sup> / <sub>16</sub>	314	3 1 <sup>3</sup> / <sub>16</sub>	7 9/ <sub>16</sub>	3 1/ <sub>2</sub>	7 7/ <sub>16</sub>	11 1/ <sub>4</sub>	14 3/ <sub>16</sub>	3 1 <sup>5</sup> / <sub>16</sub>	1 3/ <sub>4</sub>	1
PWRH-2 1 <sup>5</sup> / <sub>16</sub> -R	2 1 <sup>5</sup> / <sub>16</sub>	315	4 1/ <sub>8</sub>	8 1/ <sub>16</sub>	3 1 <sup>5</sup> / <sub>16</sub>	7 1 <sup>5</sup> / <sub>16</sub>	12	15 1/ <sub>8</sub>	4 1/ <sub>2</sub>	1 7/ <sub>8</sub>	1

§ NOT NECESSARILY A STOCK ITEM – CHECK FOR AVAILABILITY.

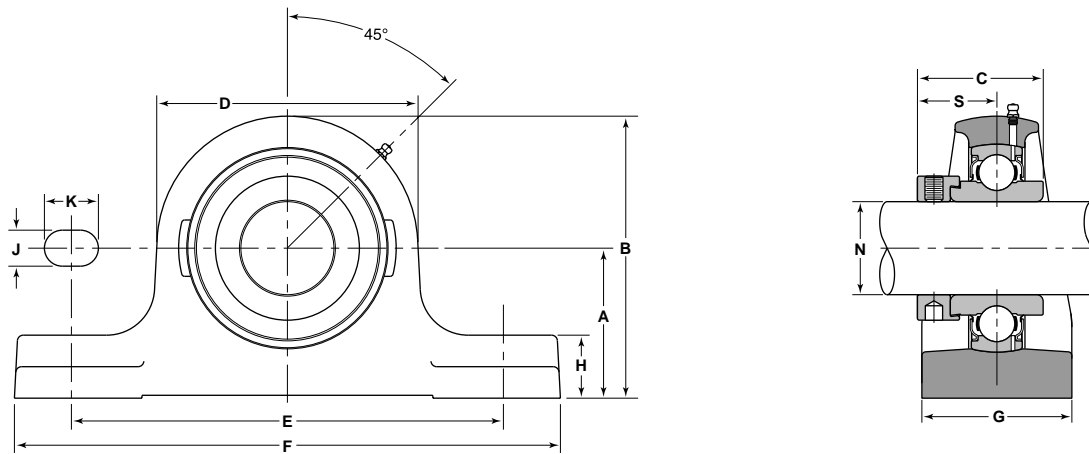
## PWRH-R—Heavy Series Low Base-To-Center Pillow Block Units



K	N	S	Bolt Size	Basic Load Ratings		Bearing Number <sup>§</sup>	§ Collar Number
				Dynamic C	Static C <sub>0</sub>		
Inch				lbs/N			
1	3	1 21/32	5/8	13900 61810	8510 37850	WPSH-115-RRC	CH-115
1 1/8	3 1/4	1 25/32	3/4	16070 71470	10020 44570	WPSH-200-RRC	CH-200
1 1/8	3 1/4	1 29/32	3/4	16070 71470	10020 44570	WPSH-203-RRC	CH-203
1 1/8	3 1/2	1 29/32	3/4	18380 81750	11660 51850	WPSH-207-RRC	CH-207
1 5/16	4	2 5/32	7/8	23410 104130	15300 68040	WPSH-211-RRC	CH-211
1 5/16	4 7/16	2 5/32	7/8	25500 113420	17300 76960	WPSH-215-RRC	CH-215

§ NOT NECESSARILY A STOCK ITEM – CHECK FOR AVAILABILITY.

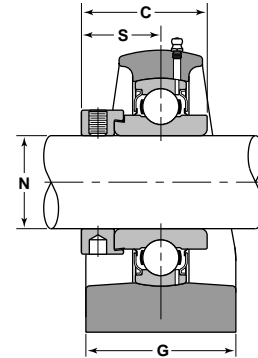
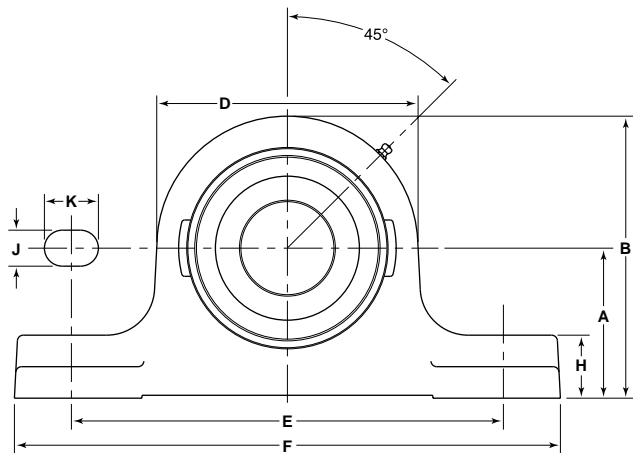
**PWRH-RS—Heavy Series  
High Base-To-Center Pillow Block Units**



Unit Number	Shaft Diameter	Basic Outer Ring	A	B	C	D	E	F	G	H	J
PWRH-1 15/16-RS	1 15/16	310	3 1/8	5 27/32	2 5/8	5 7/16	9	11 3/8	3 1/8	1 5/16	3/4
PWRH-2-RS	2	311	3 3/4	6 23/32	2 7/8	5 15/16	10 1/4	12 5/8	3 1/2	1 7/16	7/8
PWRH-2 3/16-RS	2 3/16	311	3 3/4	6 23/32	2 7/8	5 15/16	10 1/4	12 5/8	3 1/2	1 7/16	7/8
PWRH-2 7/16-RS	2 7/16	312	4 1/8	7 11/32	3 1/8	6 7/16	11 1/4	13 3/4	4	1 1/2	7/8
PWRH-2 11/16-RS	2 11/16	314	4 9/16	8 9/32	3 1/2	7 7/16	12	15 3/8	4 3/8	1 3/4	1
PWRH-2 15/16-RS	2 15/16	315	4 9/16	8 9/16	3 15/16	8	12 3/8	15 3/8	4 3/8	1 7/8	1
PWRH-3 3/16-RS	3 3/16	316	4 9/16	8 25/32	4 3/16	8 7/16	12 3/8	15 3/8	4 3/8	1 15/16	1
PWRH-3 7/16-RS	3 7/16	318	5 1/8	9 7/8	4 9/16	9 1/2	13 3/8	16 1/8	4 3/4	2 1/4	1 1/8
PWRH-3 15/16-RS	3 15/16	320	5 11/16	11 1/16	5 1/16	10 3/4	14 3/4	17 5/16	5 1/8	2 9/16	1 1/8

§ NOT NECESSARILY A STOCK ITEM – CHECK FOR AVAILABILITY.

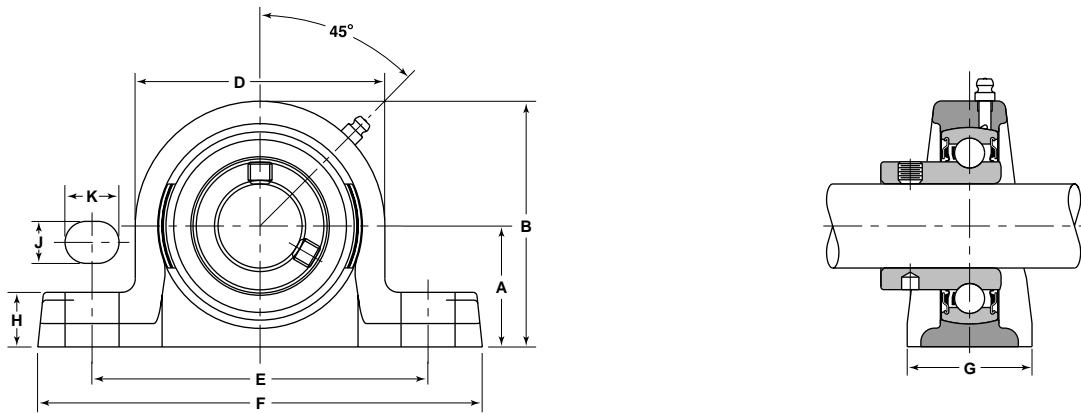
## PWRH-RS—Heavy Series High Base-To-Center Pillow Block Units



K	N	S	Bolt Size	Basic Load Ratings		Bearing Number <sup>§</sup>	§ Collar Number
				Dynamic C	Static C <sub>0</sub>		
Inch				lbs/N			
1 1/8	3	1 21/32	5/8	13900 61810	8510 37850	WPSH-115-RRC	CH-115
1 3/8	3 1/4	1 25/32	3/4	16070 71470	10020 44570	WPSH-200-RRC	CH-200
1 3/8	3 1/4	1 25/32	3/4	16070 71470	10020 44570	WPSH-203-RRC	CH-203
1 3/8	3 1/2	1 29/32	3/4	18380 81750	11660 51850	WPSH-207-RRC	CH-207
1 3/8	4	2 5/32	7/8	23410 104130	15300 68040	WPSH-211-RRC	CH-211
1 3/8	4 7/16	2 15/32	7/8	25500 113420	17300 76960	WPSH-215-RRC	CH-215
1 3/4	4 11/16	2 19/32	7/8	27640 122940	19450 86500	WPSH-303-RRC	CH-303
2 1/8	5 1/4	2 27/32	1	32060 142610	24110 107230	WPSH-307-RRC	CH-307
1 3/4	5 3/4	3 3/32	1	38890 173000	31560 140400	WPSH-315-RRC	CH-315

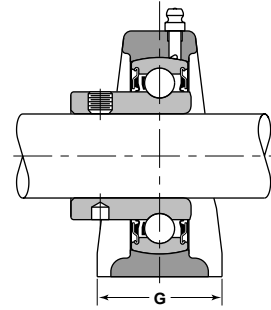
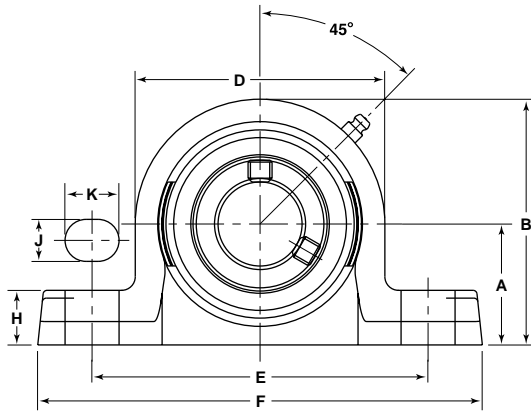
§ NOT NECESSARILY A STOCK ITEM – CHECK FOR AVAILABILITY.

## SPNR Pillow Block Set Screw Units



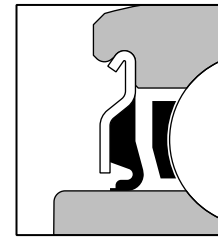
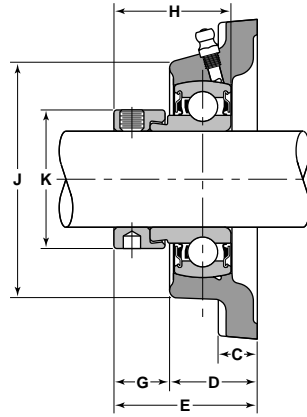
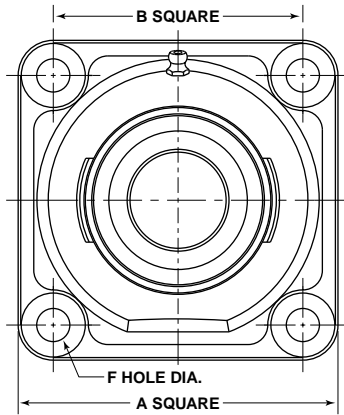
Unit Number	Shaft Diameter	Basic Outer Ring	A	B	D	H	J	K	E	F	G
SPNR-1/2-RS	1/2	203	1 3/16	2 1/4	2 1/8	1/2	7/16	9/16	3 1/2	4 3/4	1 1/4
SPNR-5/8-RS	5/8	203	1 3/16	2 1/4	2 1/8	1/2	7/16	9/16	3 1/2	4 3/4	1 1/4
SPNR-3/4-RS	3/4	204	1 5/16	2 9/16	2 1/2	9/16	7/16	5/8	3 7/8	5 1/4	1 1/2
SPNR-7/8-RS	7/8	205	1 7/16	2 13/16	2 3/4	5/8	7/16	5/8	4 1/8	5 1/2	1 5/8
SPNR-15/16-RS	15/16	205	1 7/16	2 13/16	2 3/4	5/8	7/16	5/8	4 1/8	5 1/2	1 5/8
SPNR-1-RS	1	206	1 7/16	2 13/16	2 3/4	5/8	7/16	5/8	4 1/8	5 1/2	1 5/8
SPNR-1 1/8-RS	1 1/8	206	1 11/16	3 9/32	3 3/16	3/4	9/16	3/4	4 3/4	6 5/16	1 3/4
SPNR-1 3/16-RS	1 3/16	206	1 11/16	3 9/32	3 3/16	3/4	9/16	3/4	4 3/4	6 5/16	1 3/4
SPNR-1 1/4-2RS	1 1/4	206	1 11/16	3 9/32	3 3/16	3/4	9/16	3/4	4 3/4	6 5/16	1 3/4
SPNR-1 1/4-RS	1 1/4	207	1 7/8	3 11/16	3 5/8	13/16	9/16	3/4	5	6 9/16	1 7/8
SPNR-1 3/8-RS	1 3/8	207	1 7/8	3 11/16	3 5/8	13/16	9/16	3/4	5	6 9/16	1 7/8
SPNR-1 7/16-RS	1 7/16	207	1 7/8	3 11/16	3 5/8	13/16	9/16	3/4	5	6 9/16	1 7/8
SPNR-1 1/2-RS	1 1/2	208	1 15/16	3 15/16	4	7/8	9/16	3/4	5 1/2	7 1/8	2

## SPNR Pillow Block Set Screw Units



Basic Load Ratings		Bearing Number	Housing Number
Dynamic C	Static C <sub>0</sub>		
lbs/N			
2150 9550	1070 4760	SNPS-008-RR	P-40-RS
2150 9550	1070 4760	SNPS-010-RR	P-40-RS
2880 12790	1480 6580	SNPS-012-RR	P-47-RS
3150 14010	1760 7830	SNPS-014-RR	P-52-RS
3150 14010	1760 7830	SNPS-015-RR	P-52-RS
4370 19450	2530 11260	SNPS-100-RR	P-52-RS
4370 19450	2530 11260	SNPS-102-RR	P-62-RS
4370 19450	2530 11260	SNPS-103-RR	P-62-RS
4370 19450	2530 11260	SNPS-103-RR2	P-62-RS
5770 25670	3440 15300	SNPS-104-RR	P-72-RS
5770 25670	3440 15300	SNPS-106-RR	P-72-RS
5770 25670	3440 15300	SNPS-107-RR	P-72-RS
6540 29110	4020 17900	SNPS-108-RR	P-80-RS

**FNR—4-Bolt Cast Iron Flange Units  
Extended Inner Ring Bearings  
VANGUARD® Narrow Single Lip Seals**

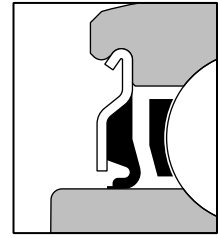
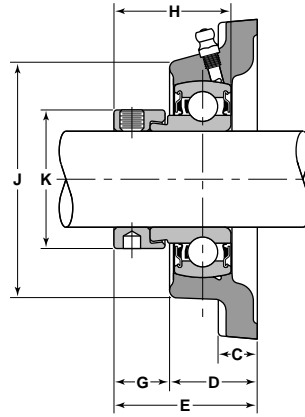
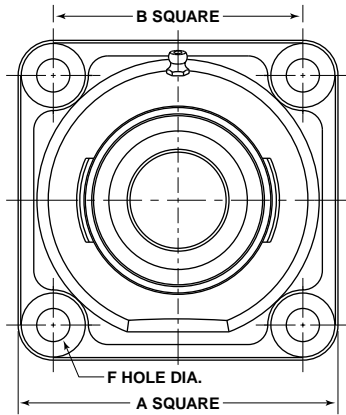


VANGUARD® "R" SEAL

Unit Number	Shaft Diameter	Basic Outer Ring	A	B	C	D	E	F	G	H	J
FNR-1/2-R	1/2	203	3	2 1/8	7/16	1 1/64	1 17/32	13/32	33/64	1 1/8	1 7/8
§ FNR-9/16-R	9/16	203	3	2 1/8	7/16	1 1/64	1 17/32	13/32	33/64	1 1/8	1 7/8
FNR-5/8-R	5/8	203	3	2 1/8	7/16	1 1/64	1 17/32	13/32	33/64	1 1/8	1 7/8
FNR-3/4-R	3/4	204	3 3/8	2 1/2	7/16	1 3/32	1 39/64	13/32	33/64	1 7/32	2 1/8
§ FNR-13/16-R	13/16	205	3 3/4	2 3/4	1/2	1 5/32	1 41/64	15/32	31/64	1 7/32	2 11/32
§ FNR-7/8-R	7/8	205	3 3/4	2 3/4	1/2	1 5/32	1 41/64	15/32	31/64	1 7/32	2 11/32
§ FNR-15/16-R	15/16	205	3 3/4	2 3/4	1/2	1 5/32	1 41/64	15/32	31/64	1 7/32	2 11/32
FNR-1-R	1	205	3 3/4	2 3/4	1/2	1 5/32	1 41/64	15/32	31/64	1 7/32	2 11/32
§ FNR-1 1/16-R	1 1/16	206	4 1/4	3 1/4	9/16	1 5/16	1 57/64	15/32	37/64	1 13/32	3
§ FNR-1 1/8-R	1 1/8	206	4 1/4	3 1/4	9/16	1 5/16	1 57/64	15/32	37/64	1 13/32	3
FNR-1 3/16-R	1 3/16	206	4 1/4	3 1/4	9/16	1 5/16	1 57/64	15/32	37/64	1 13/32	3
FNR-1 1/4-R	1 1/4	206	4 1/4	3 1/4	9/16	1 5/16	1 57/64	15/32	37/64	1 13/32	3
FNR-1 1/4-R	1 1/4	207	4 5/8	3 5/8	5/8	1 15/32	2 3/32	17/32	5/8	1 17/32	3 13/32
§ FNR-1 5/16-R	1 5/16	207	4 5/8	3 5/8	5/8	1 15/32	2 3/32	17/32	5/8	1 17/32	3 13/32
FNR-1 3/8-R	1 3/8	207	4 5/8	3 5/8	5/8	1 15/32	2 3/32	17/32	5/8	1 17/32	3 13/32
FNR-1 7/16-R	1 7/16	207	4 5/8	3 5/8	5/8	1 15/32	2 3/32	17/32	5/8	1 17/32	3 13/32
FNR-1 1/2-R	1 1/2	208	5 1/8	4	5/8	1 13/32	2 5/32	17/32	3/4	1 23/32	3 23/32
§ FNR-1 9/16-R	1 9/16	208	5 1/8	4	5/8	1 13/32	2 5/32	17/32	3/4	1 23/32	3 23/32

§ NOT NECESSARILY A STOCK ITEM – CHECK FOR AVAILABILITY.

## FNR—4-Bolt Cast Iron Flange Units Extended Inner Ring Bearings VANGUARD® Narrow Single Lip Seals

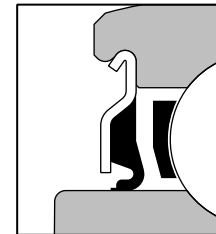
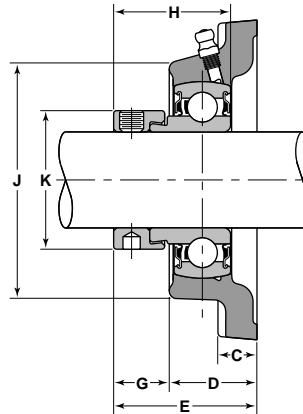
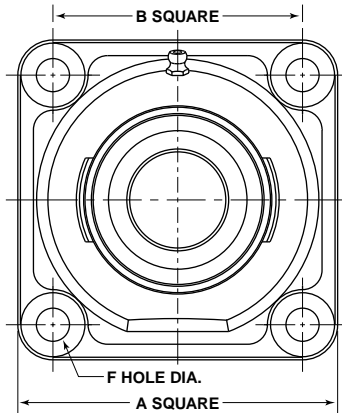


VANGUARD® "R" SEAL

K Inch	Basic Load Ratings		Bearing Number <sup>Ø</sup>	Housing Number	Collar Number
	Dynamic C	Static C <sub>0</sub>			
	lbs/N				
1 1/8	2150 9550	1070 4760	NPS-008-RRC	F-40-R	C-008
1 1/8	2150 9550	1070 4760	NPS-009-RRC	F-40-R	C-009
1 1/8	2150 9550	1070 4760	NPS-010-RRC	F-40-R	C-010
1 5/16	2880 12790	1480 6580	NPS-012-RRC	F-47-R	C-012
1 1/2	3150 14010	1760 7830	NPS-013-RRC	F-52-R	C-013
1 1/2	3150 14010	1760 7830	NPS-014-RRC	F-52-R	C-014
1 1/2	3150 14010	1760 7830	NPS-015-RRC	F-52-R	C-015
1 1/2	3150 14010	1760 7830	NPS-100-RRC	F-52-R	C-100
1 3/4	4370 19450	2530 11260	NPS-101-RRC	F-62-R	C-101
1 3/4	4370 19450	2530 11260	NPS-102-RRC	F-62-R	C-102
1 3/4	4370 19450	2530 11260	NPS-103-RRC	F-62-R	C-103
1 3/4	4370 19450	2530 11260	NPS-103-RR2C	F-62-R	C-103-2
2 1/8	5770 25670	3440 15300	NPS-104-RRC	F-72-R	C-104
2 1/8	5770 25670	3440 15300	NPS-105-RRC	F-72-R	C-105
2 1/8	5770 25670	3440 15300	NPS-106-RRC	F-72-R	C-106
2 1/8	5770 25670	3440 15300	NPS-107-RRC	F-72-R	C-107
2 3/8	6540 29110	4020 17900	NPS-108-RRC	F-80-R	C-108
2 3/8	6540 29110	4020 17900	NPS-109-RRC	F-80-R	C-109

§ NOT NECESSARILY A STOCK ITEM – CHECK FOR AVAILABILITY.

**FNR—4-Bolt Cast Iron Flange Units  
Extended Inner Ring Bearings  
VANGUARD® Narrow Single Lip Seals**

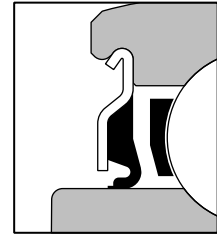
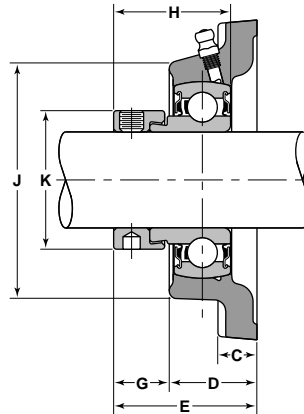
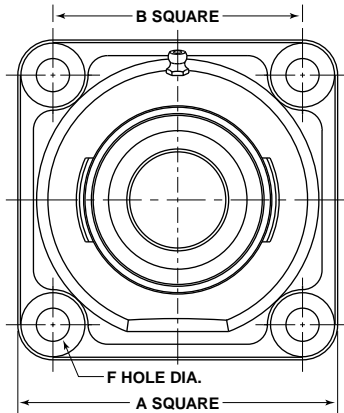


VANGUARD® "R" SEAL

Unit Number	Shaft Diameter	Basic Outer Ring	A	B	C	D	E	F	G	H	J
§ FNR-1 5/8-R	1 5/8	209	5 3/8	4 1/8	11/16	1 17/32	2 7/32	19/32	1 21/32	1 23/32	4 1/8
§ FNR-1 11/16-R	1 11/16	209	5 3/8	4 1/8	11/16	1 17/32	2 7/32	19/32	1 21/32	1 23/32	4 1/8
§ FNR-1 3/4-R	1 3/4	209	5 3/8	4 1/8	11/16	1 17/32	2 7/32	19/32	1 21/32	1 23/32	4 1/8
§ FNR-1 13/16-R	1 13/16	210	5 5/8	4 3/8	23/32	1 7/8	2 3/8	19/32	1 21/32	1 23/32	4 7/16
§ FNR-1 7/8-R	1 7/8	210	5 5/8	4 3/8	23/32	1 7/8	2 3/8	19/32	1 21/32	1 23/32	4 7/16
§ FNR-1 15/16-R	1 15/16	210	5 5/8	4 3/8	23/32	1 7/8	2 3/8	19/32	1 21/32	1 23/32	4 7/16
§ FNR-2-2R	2	210	5 5/8	4 3/8	23/32	1 7/8	2 3/8	19/32	1 21/32	1 23/32	4 7/16

§ NOT NECESSARILY A STOCK ITEM – CHECK FOR AVAILABILITY.

## FNR—4-Bolt Cast Iron Flange Units Extended Inner Ring Bearings VANGUARD® Narrow Single Lip Seals

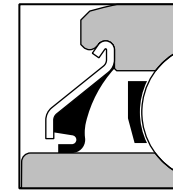
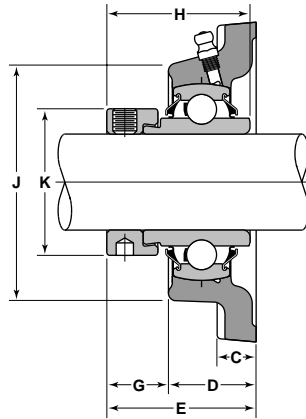
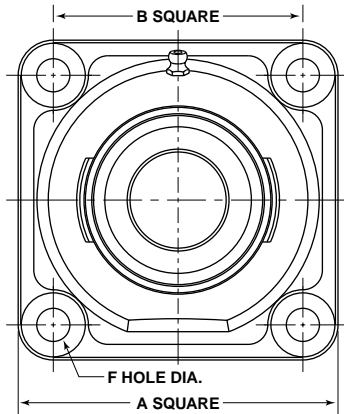


VANGUARD® "R" SEAL

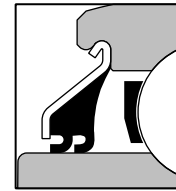
Bolt Inch	Basic Load Ratings Dynamic C   Static C <sub>o</sub>		Bearing Number	Housing Number	Collar Number
	lbs/N				
2 ½	7020	4570	NPS-110-RRC	F-85-R	C-110
	31240	20320			
2 ½	7020	4570	NPS-111-RRC	F-85-R	C-111
	31240	20320			
2 ½	7020	4570	NPS-112-RRC	F-85-R	C-112
	31240	20320			
2 ¾	7890	5210	NPS-113-RRC	F-90-R	C-113
	35070	23180			
2 ¾	7890	5210	NPS-114-RRC	F-90-R	C-114
	35070	23180			
2 ¾	7890	5210	NPS-115-RRC	F-90-R	C-115
	35070	23180			
2 ¾	7890	5210	NPS-115-RR2C	F-90-R	C-115-2
	35070	23180			

§ NOT NECESSARILY A STOCK ITEM – CHECK FOR AVAILABILITY.

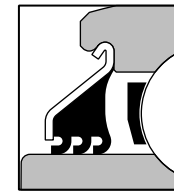
**FWG, FWV & FWT—4-Bolt Cast Iron Flange Units  
Wide Inner Ring Bearings  
VANGUARD® Wide Single, Double and Triple Lip Seals**



VANGUARD® "G" SEAL



VANGUARD® "V" SEAL

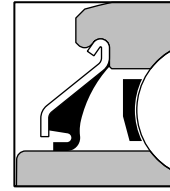
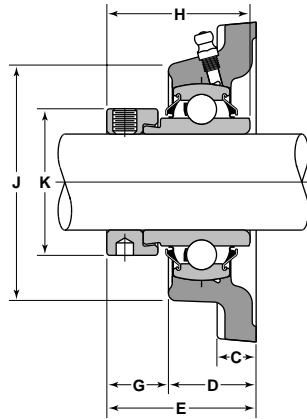
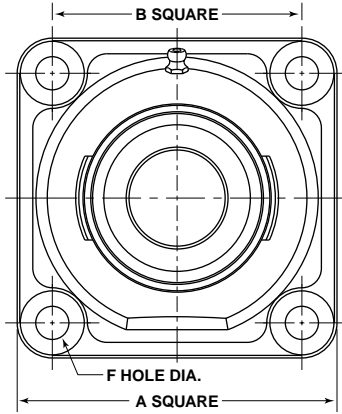


VANGUARD® "T" SEAL

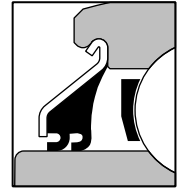
Unit With Vanguard "G" Seal	Unit With Vanguard "V" Seal	Unit With Vanguard "T" Seal	Shaft Diameter	Basic Outer Ring	A	B	C	D
					Inch			
FWG-3/4-R	§ FWV-3/4-R	§ FWT-3/4-R	3/4	204	3 3/8	2 1/2	7/16	1 3/32
§ FWG-13/16-R	§ FWV-13/16-R	§ FWT-13/16-R	13/16	205	3 3/4	2 3/4	1/2	1 5/32
FWG-7/8-R	§ FWV-7/8-R	§ FWT-7/8-R	7/8	205	3 3/4	2 3/4	1/2	1 5/32
FWG-15/16-R	§ FWV-15/16-R	§ FWT-15/16-R	15/16	205	3 3/4	2 3/4	1/2	1 5/32
FWG-1-R	§ FWV-1-R	§ FWT-1-R	1	205	3 3/4	2 3/4	1/2	1 5/32
FWG-1 1/16-RM	§ FWV-1 1/16-RM	§ FWT-1 1/16-RM	1 1/16	206	4 1/4	3 1/4	9/16	1 15/16
FWG-1 1/8-R	§ FWV-1 1/8-R	§ FWT-1 1/8-R	1 1/8	206	4 1/4	3 1/4	9/16	1 15/16
FWG-1 3/16-RM	§ FWV-1 3/16-RM	§ FWT-1 3/16-RM	1 3/16	206	4 1/4	3 1/4	9/16	1 15/16
§ FWG-1 1/4-2R	§ FWV-1 1/4-2R	§ FWT-1 1/4-2R	1 1/4	206	4 1/4	3 1/4	9/16	1 15/16
FWG-1 1/4-R	§ FWV-1 1/4-R	FWT-1 1/4-R	1 1/4	207	4 5/8	3 5/8	5/8	1 15/32
FWG-1 5/16-RM	§ FWV-1 5/16-RM	§ FWT-1 5/16-RM	1 5/16	207	4 5/8	3 5/8	5/8	1 15/32
FWG-1 3/8-R	§ FWV-1 3/8-R	§ FWT-1 3/8-R	1 3/8	207	4 5/8	3 5/8	5/8	1 15/32
FWG-1 7/16-R	§ FWV-1 7/16-R	FWT-1 7/16-R	1 7/16	207	4 5/8	3 5/8	5/8	1 15/32
FWG-1 1/2-R	§ FWV-1 1/2-R	§ FWT-1 1/2-R	1 1/2	208	5 1/8	4	5/8	1 13/32
FWG-1 9/16-R	§ FWV-1 9/16-R	§ FWT-1 9/16-R	1 9/16	208	5 1/8	4	5/8	1 13/32
FWG-1 5/8-R		§ FWT-1 5/8-R	1 5/8	209	5 3/8	4 1/8	11/16	1 17/32
FWG-1 11/16-R		§ FWT-1 11/16-R	1 11/16	209	5 3/8	4 1/8	11/16	1 17/32
FWG-1 3/4-R		§ FWT-1 3/4-R	1 3/4	209	5 3/8	4 1/8	11/16	1 17/32
§ FWG-1 13/16-R		§ FWT-1 13/16-R	1 13/16	210	5 5/8	4 3/8	23/32	1 7/8
FWG-1 7/8-R		§ FWT-1 7/8-R	1 7/8	210	5 5/8	4 3/8	23/32	1 7/8

Ⓢ BEARING NUMBER FOR FWG UNIT ONLY. FWV UNIT USES WPS-VRC SERIES AND FWT UNIT USES WPS-TRC SERIES.  
§ NOT NECESSARILY A STOCK ITEM – CHECK FOR AVAILABILITY.

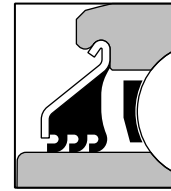
## FWG, FWV & FWT—4-Bolt Cast Iron Flange Units Wide Inner Ring Bearings VANGUARD® Wide Single, Double and Triple Lip Seals



VANGUARD® "G" SEAL



VANGUARD® "V" SEAL



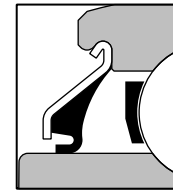
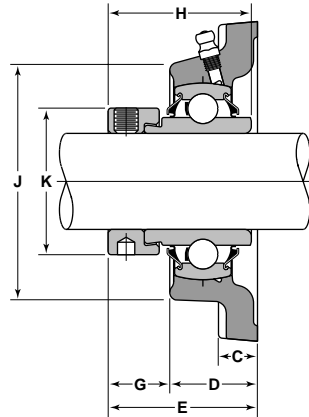
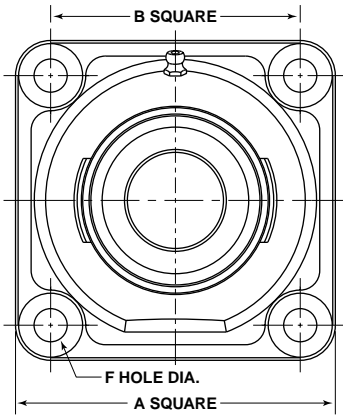
VANGUARD® "T" SEAL

E	F	G	H	J	K	Basic Load Ratings		Bearing Number ①	Housing Number	Collar Number
						Dynamic C	Static C <sub>0</sub>			
Inch						lbs/N				
1 47/64	1 13/32	41/64	1 23/32	2 1/8	1 5/16	2880 12790	1480 6580	WPS-012-GRC	F-47-R	C-012
1 25/32	1 15/32	5/8	1 3/4	2 11/32	2 1/2	3150 14010	1760 7830	WPS-013-GRC	F-52-R	§ C-013
1 25/32	1 15/32	5/8	1 3/4	2 11/32	2 1/2	3150 14010	1760 7830	WPS-014-GRC	F-52-R	C-014
1 25/32	1 15/32	5/8	1 3/4	2 11/32	2 1/2	3150 14010	1760 7830	WPS-015-GRC	F-52-R	C-015
1 25/32	1 15/32	5/8	1 3/4	2 11/32	2 1/2	3150 14010	1760 7830	WPS-100-GRC	F-52-R	C-100
2 1/32	1 15/32	23/32	1 29/32	3	1 3/4	4370 19450	2530 11260	WPS-101-GRC	F-62-R	C-101
2 1/32	1 15/32	23/32	1 29/32	3	1 3/4	4370 19450	2530 11260	WPS-102-GRC	F-62-R	C-102
2 1/32	1 15/32	23/32	1 29/32	3	1 3/4	4370 19450	2530 11260	WPS-103-GRC	F-62-R	C-103
2 1/32	1 15/32	23/32	1 29/32	3	1 3/4	4370 19450	2530 11260	WPS-103-GR2C	F-62-R	C-103-2
2 13/64	1 17/32	47/64	2 1/64	3 13/32	2 1/8	5770 25670	3440 15300	WPS-104-GRC	F-72-R	C-104
2 13/64	1 17/32	47/64	2 1/64	3 13/32	2 1/8	5770 25670	3440 15300	WPS-105-GRC	F-72-R	C-105
2 13/64	1 17/32	47/64	2 1/64	3 13/32	2 1/8	5770 25670	3440 15300	WPS-106-GRC	F-72-R	C-106
2 13/64	1 17/32	47/64	2 1/64	3 13/32	2 1/8	5770 25670	3440 15300	WPS-107-GRC	F-72-R	C-107
2 1/4	1 17/32	27/32	2 7/32	3 23/32	2 3/8	6540 29110	4020 17900	WPS-108-GRC	F-80-R	C-108
2 1/4	1 17/32	27/32	2 7/32	3 23/32	2 3/8	6540 29110	4020 17900	WPS-109-GRC	F-80-R	§ C-109
2 5/16	1 19/32	11/16	2 7/32	4 1/8	2 1/2	7020 31240	4570 20320	WPS-110-GRC	F-85-R	C-110
2 5/16	1 19/32	11/16	2 7/32	4 1/8	2 1/2	7020 31240	4570 20320	WPS-111-GRC	F-85-R	C-111
2 5/16	1 19/32	11/16	2 7/32	4 1/8	2 1/2	7020 31240	4570 20320	WPS-112-GRC	F-85-R	C-112
2 5/8	1 19/32	1 3/32	2 15/32	4 7/16	2 3/4	7890 35070	5210 23180	WPS-113-GRC	F-90-R	§ C-113
2 5/8	1 19/32	1 3/32	2 15/32	4 7/16	2 3/4	7890 35070	5210 23180	WPS-114-GRC	F-90-R	§ C-114

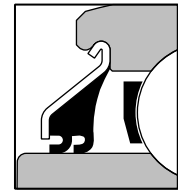
① BEARING NUMBER FOR FWG UNIT ONLY. FWV UNIT USES WPS-VRC SERIES AND FWT UNIT USES WPS-TRC SERIES.

§ NOT NECESSARILY A STOCK ITEM – CHECK FOR AVAILABILITY.

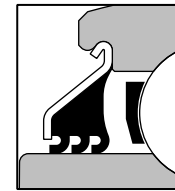
**FWG, FWV & FWT—4-Bolt Cast Iron Flange Units  
Wide Inner Ring Bearings  
VANGUARD® Wide Single, Double and Triple Lip Seals**



VANGUARD® "G" SEAL



VANGUARD® "V" SEAL

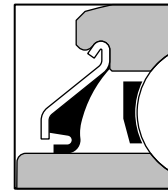
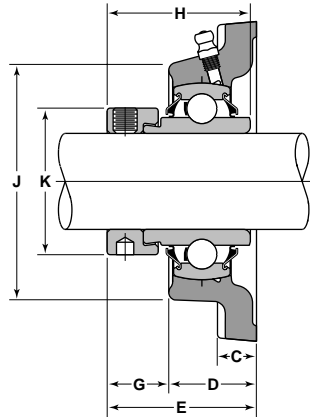
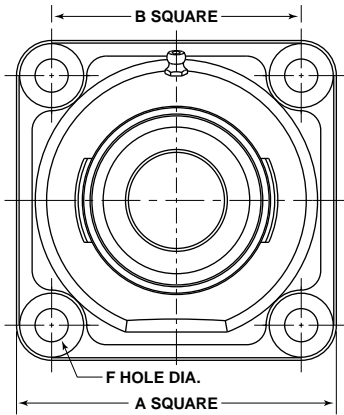


VANGUARD® "T" SEAL

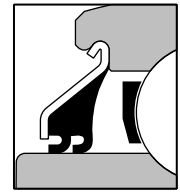
Unit With Vanguard "G" Seal	Unit With Vanguard "V" Seal	Unit With Vanguard "T" Seal	Shaft Diameter	Basic Outer Ring	Inch			
					A	B	C	D
FWG-1 1 <sup>5</sup> / <sub>16</sub> -R	FWV-1 1 <sup>5</sup> / <sub>16</sub> -R	FWT-1 1 <sup>5</sup> / <sub>16</sub> -R	1 1 <sup>5</sup> / <sub>16</sub>	210	5 5/8	4 3/8	23/32	1 7/8
§ FWG-2-2R	FWV-2-2R	§ FWT-2-2R	2	210	5 5/8	4 3/8	23/32	1 7/8
FWG-2-R	FWV-2-R	§ FWT-2-R	2	211	6 3/8	5 1/8	25/32	1 15/16
FWG-2 3/16-R	FWV-2 3/16-R	§ FWT-2 3/16-R	2 3/16	211	6 3/8	5 1/8	25/32	1 15/16
§ FWG-2 1/4-R	FWV-2 1/4-R	§ FWT-2 1/4-R	2 1/4	212	6 7/8	5 5/8	27/32	2 1/16
FWG-2 7/16-R	FWV-2 7/16-R	§ FWT-2 7/16-R	2 7/16	212	6 7/8	5 5/8	27/32	2 1/16

ⓘ BEARING NUMBER FOR FWG UNIT ONLY. FWV UNIT USES WPS-VRC SERIES AND FWT UNIT USES WPS-TRC SERIES.  
§ NOT NECESSARILY A STOCK ITEM – CHECK FOR AVAILABILITY.

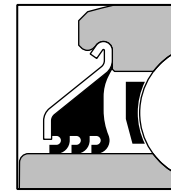
## FWG, FWV & FWT—4-Bolt Cast Iron Flange Units Wide Inner Ring Bearings VANGUARD® Wide Single, Double and Triple Lip Seals



VANGUARD® "G" SEAL



VANGUARD® "V" SEAL

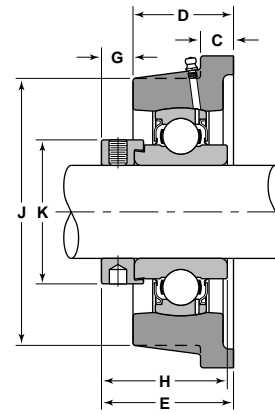
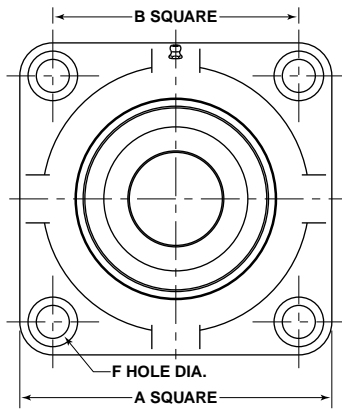


VANGUARD® "T" SEAL

E	F	G	H	J	K	Basic Load Ratings		Bearing Number <sup>①</sup>	Housing Number	Collar Number
						Dynamic C	Static C <sub>0</sub>			
Inch						lbs/N				
2 5/8	19/32	1 3/32	2 15/32	4 7/16	2 3/4	7890 35070	5210 23180	WPS-115-GRC	F-90-R	C-115
2 5/8	19/32	1 3/32	2 15/32	4 7/16	2 3/4	7890 35070	5210 23180	§ WPS-115-GR2C	F-90-R	§ C-115-2
2 31/32	21/32	1 1/32	2 13/16	4 3/4	3	9750 43380	6570 29220	WPS-200-GRC	F-100-R	C-200
2 31/32	21/32	1 1/32	2 13/16	4 3/4	3	9750 43380	6570 29220	WPS-203-GRC	F-100-R	C-203
3 1/4	21/32	1 3/16	3 1/16	5 3/8	3 5/16	10740 47760	7400 32930	WPS-204-GRC	F-110-R	C-204
3 1/4	21/32	1 3/16	3 1/16	5 3/8	3 5/16	10740 47760	7400 32930	WPS-207-GRC	F-110-R	C-207

① BEARING NUMBER FOR FWG UNIT ONLY. FWV UNIT USES WPS-VRC SERIES AND FWT UNIT USES WPS-TRC SERIES.  
§ NOT NECESSARILY A STOCK ITEM – CHECK FOR AVAILABILITY.

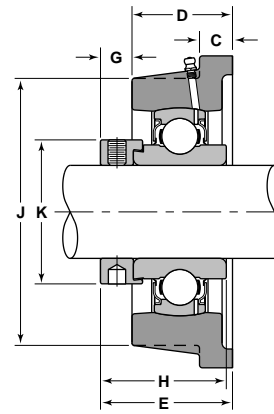
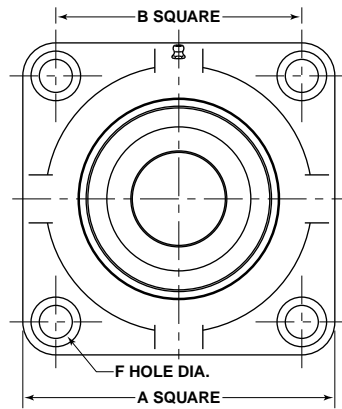
**FWRH-R—Heavy Series Four Bolt Flanged Unit**



Unit Number	Shaft Diameter	Basic Outer Ring	A	B	C	D	E	F	G	H	J
FWRH-1 1 <sup>5</sup> / <sub>16</sub> -R	1 1 <sup>5</sup> / <sub>16</sub>	310	6 1/2	5 1/8	11/16	2 3/32	2 3/4	11/16	2 1/32	2 5/8	5 9/16
FWRH-2-R	2	311	7	5 5/8	11/16	2 5/16	3	11/16	11/16	2 7/8	6 1/16
FWRH-2 3/16-R	2 3/16	311	7	5 5/8	11/16	2 5/16	3	11/16	11/16	2 7/8	6 1/16
FWRH-2 7/16-R	2 7/16	312	7 1/2	5 7/8	3/4	2 9/16	3 5/16	13/16	3/4	3 1/8	6 5/16
FWRH-2 11/16-R	2 11/16	314	8 7/8	7	7/8	2 27/32	3 11/16	15/16	27/32	3 1/2	7 5/16
FWRH-2 15/16-R	2 15/16	315	9 1/8	7 1/4	7/8	3 1/16	4 1/8	15/16	1 1/16	3 15/16	7 13/16
FWRH-3 7/16-R	3 7/16	318	11	8 1/2	1 1/8	3 5/16	4 3/4	1 1/16	1 7/16	4 9/16	9
FWRH-3 15/16-R	3 15/16	320	12 1/2	9 1/2	1 1/4	3 13/16	5 1/4	1 3/16	1 7/16	5 1/16	10 1/2

§ NOT NECESSARILY A STOCK ITEM – CHECK FOR AVAILABILITY.

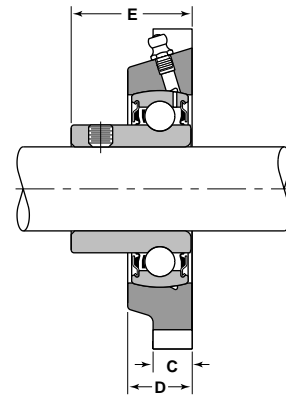
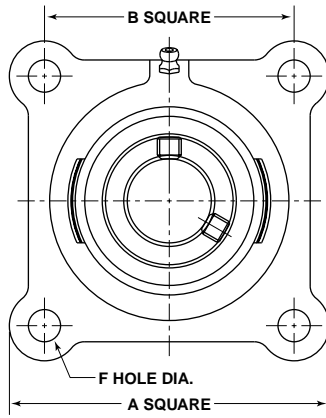
## FWRH-R—Heavy Series Four Bolt Flanged Unit



K Inch	Basic Load Ratings		Bearing Number	§ Collar Number
	Dynamic C	Static C <sub>o</sub>		
3	13900 61810	8510 37850	WPSH-115-RRC	CH-115
3 ¼	16070 71470	10020 44570	WPSH-200-RRC	CH-200
3 ¼	16070 71470	10020 44570	WPSH-203-RRC	CH-203
3 ½	18380 81750	11660 51850	WPSH-207-RRC	CH-207
4	23410 104130	15300 68040	WPSH-211-RRC	CH-211
4 7/16	25500 113420	17300 76960	WPSH-215-RRC	CH-215
5 13/64	32060 142610	24110 107230	WPSH-307-RRC	CH-307
5 47/64	38890 173000	31560 140400	WPSH-315-RRC	CH-315

§ NOT NECESSARILY A STOCK ITEM – CHECK FOR AVAILABILITY.

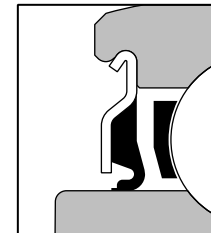
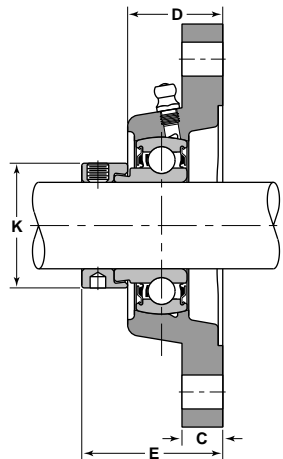
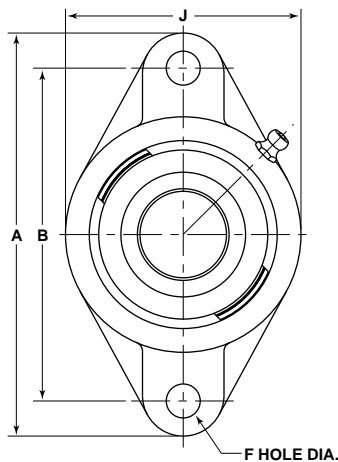
**SAFNR—Four Bolt Flanged Set Screw Units**



Unit Number	Shaft Diameter	Basic Outer Ring	A	B	F	D	C	E	Basic Load Ratings		Bearing Number
									Dynamic C	Static C <sub>0</sub>	
									lbs/N		
SAFNR-1/2-R	1/2	203	3	2 1/8	25/64	45/64	7/16	1	2150 9550	1070 4760	SNPS-008-RR
SAFNR-5/8-R	5/8	203	3	2 1/8	25/64	45/64	7/16	1	2150 9550	1070 4760	SNPS-010-RR
SAFNR-3/4-R	3/4	204	3 3/8	2 1/2	25/64	3/4	7/16	1 1/8	2880 12790	1480 6580	SNPS-012-RR
SAFNR-7/8-R	7/8	205	3 3/4	2 3/4	29/64	25/32	17/32	1 11/64	3150 14010	1760 7830	SNPS-014-RR
SAFNR-15/16-R	15/16	205	3 3/4	2 3/4	29/64	25/32	17/32	1 11/64	3150 14010	1760 7830	SNPS-015-RR
SAFNR-1-R	1	205	3 3/4	2 3/4	29/64	25/32	17/32	1 11/64	3150 14010	1760 7830	SNPS-100-RR
SAFNR-1 1/8-R	1 1/8	206	4 1/4	3 1/4	29/64	27/32	9/16	1 11/32	4370 19450	2530 11260	SNPS-102-RR
SAFNR-1 3/16-R	1 3/16	206	4 1/4	3 1/4	29/64	27/32	9/16	1 11/32	4370 19450	2530 11260	SNPS-103-RR
SAFNR-1 1/4-2R	1 1/4	206	4 1/4	3 1/4	29/64	27/32	9/16	1 11/32	4370 19450	2530 11260	SNPS-103-RR2
SAFNR-1 1/4-R	1 1/4	207	4 5/8	3 5/8	33/64	31/32	19/32	1 1/2	5770 25670	3440 15300	SNPS-104-RR
SAFNR-1 3/8-R	1 3/8	207	4 5/8	3 5/8	33/64	31/32	19/32	1 1/2	5770 25670	3440 15300	SNPS-106-RR
SAFNR-1 7/16-R	1 7/16	207	4 5/8	3 5/8	33/64	31/32	19/32	1 1/2	5770 25670	3440 15300	SNPS-107-RR
SAFNR-1 1/2-R	1 1/2	208	5 1/8	4	33/64	1 1/32	33/64	1 39/64	6540 29110	4020 17900	SNPS-108-RR



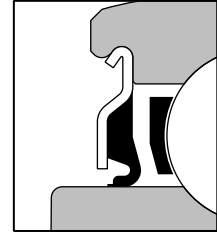
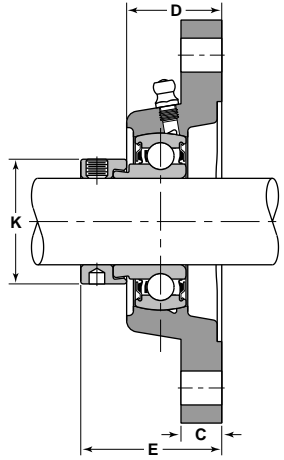
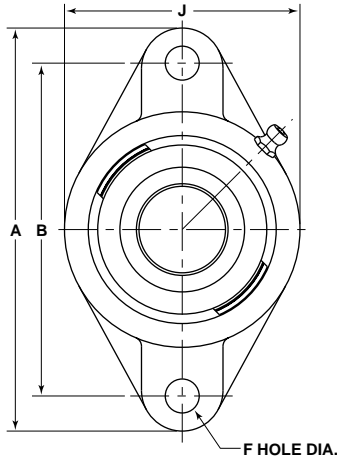
**TNR—2-Bolt Cast Iron Flange Units  
Extended Inner Ring Bearings  
VANGUARD® Narrow Single Lip Seals**



Unit Number	Shaft Diameter	Basic Outer Ring	J	A	D	B	F	E	C	K
TNR-1/2-R	1/2	203	2 5/16	3 7/8	1 1/64	3	13/32	1 17/32	7/16	1 1/8
§ TNR-9/16-R	9/16	203	2 5/16	3 7/8	1 1/64	3	13/32	1 17/32	7/16	1 1/8
TNR-5/8	5/8	203	2 5/16	3 7/8	1 1/64	3	13/32	1 17/32	7/16	1 1/8
TNR-3/4-R	3/4	204	2 3/8	4 13/32	1 3/32	3 17/32	13/32	1 39/64	7/16	1 5/16
§ TNR-13/16-R	13/16	205	2 3/4	4 7/8	1 5/32	3 57/64	15/32	1 41/64	1/2	1 1/2
TNR-7/8-R	7/8	205	2 3/4	4 7/8	1 5/32	3 57/64	15/32	1 41/64	1/2	1 1/2
§ TNR-15/16	15/16	205	2 3/4	4 7/8	1 5/32	3 57/64	15/32	1 41/64	1/2	1 1/2
TNR-1-R	1	205	2 3/4	4 7/8	1 5/32	3 57/64	15/32	1 41/64	1/2	1 1/2
§ TNR-1 1/16-RM	1 1/16	206	3 1/4	5 9/16	1 5/16	4 19/32	15/32	1 57/64	9/16	1 3/4
TNR-1 1/8-R	1 1/8	206	3 1/4	5 9/16	1 5/16	4 19/32	15/32	1 57/64	9/16	1 3/4
TNR-1 3/16-RM	1 3/16	206	3 1/4	5 9/16	1 5/16	4 19/32	15/32	1 57/64	9/16	1 3/4
§ TNR-1 1/4-2R	1 1/4	206	3 1/4	5 9/16	1 5/16	4 19/32	15/32	1 57/64	9/16	1 3/4
TNR-1 1/4-R	1 1/4	207	3 3/4	6 1/8	1 15/32	5 1/8	17/32	2 3/32	5/8	2 1/8
TNR-1 5/16-RM	1 5/16	207	3 3/4	6 1/8	1 15/32	5 1/8	17/32	2 3/32	5/8	2 1/8
TNR-1 3/8-R	1 3/8	207	3 3/4	6 1/8	1 15/32	5 1/8	17/32	2 3/32	5/8	2 1/8
TNR-1 7/16-R	1 7/16	207	3 3/4	6 1/8	1 15/32	5 1/8	17/32	2 3/32	5/8	2 1/8
TNR-1 1/2-R	1 1/2	208	4 1/8	6 3/4	1 13/32	5 21/32	17/32	2 5/32	5/8	2 3/8
§ TNR-1 9/16-R	1 9/16	208	4 1/8	6 3/4	1 13/32	5 21/32	17/32	2 5/32	5/8	2 3/8

§ NOT NECESSARILY A STOCK ITEM – CHECK FOR AVAILABILITY.

## TNR—2-Bolt Cast Iron Flange Units Extended Inner Ring Bearings VANGUARD® Narrow Single Lip Seals

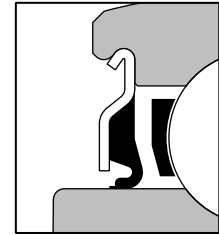
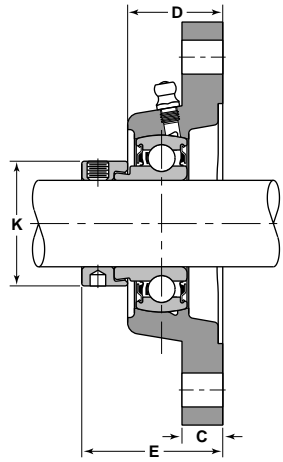
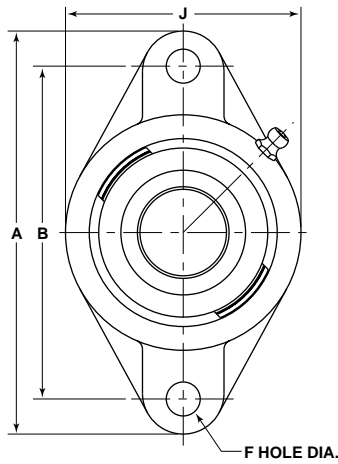


VANGUARD® "R" SEAL

Basic Load Ratings		Bearing Number <sup>§</sup>	Housing Number	Collar Number
Dynamic C	Static C <sub>0</sub>			
lbs/N				
2150 9550	1070 4760	NPS-008-RRC	T-40-R	C-008
2150 9550	1070 4760	§ NPS-009-RRC	T-40-R	§ C-009
2150 9550	1070 4760	NPS-010-RRC	T-40-R	C-010
2880 12790	1480 6580	NPS-012-RRC	T-47-R	C-012
3150 14010	1760 7830	§ NPS-013-RRC	T-52-R	§ C-013
3150 14010	1760 7830	NPS-014-RRC	T-52-R	C-014
3150 14010	1760 7830	NPS-015-RRC	T-52-R	C-015
3150 14010	1760 7830	NPS-100-RRC	T-52-R	C-100
4370 19450	2530 11260	NPS-101-RRC	T-62-R	C-101
4370 19450	2530 11260	NPS-102-RRC	T-62-R	C-102
4370 19450	2530 11260	NPS-103-RRC	T-62-R	C-103
4370 19450	2530 11260	NPS-103-RR2C	T-62-R	C-103-2
5770 25670	3440 15300	NPS-104-RRC	T-72-R	C-104
5770 25670	3440 15300	NPS-105-RRC	T-72-R	C-105
5770 25670	3440 15300	NPS-106-RRC	T-72-R	C-106
5770 25670	3440 15300	NPS-107-RRC	T-72-R	C-107
6540 29110	4020 17900	NPS-108-RRC	T-80-R	C-108
6540 29110	4020 17900	NPS-109-RRC	T-80-R	§ C-109

§ NOT NECESSARILY A STOCK ITEM – CHECK FOR AVAILABILITY.

**TNR—2-Bolt Cast Iron Flange Units  
Extended Inner Ring Bearings  
VANGUARD® Narrow Single Lip Seals**

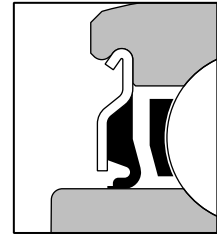
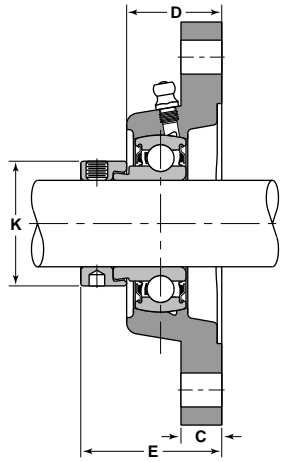
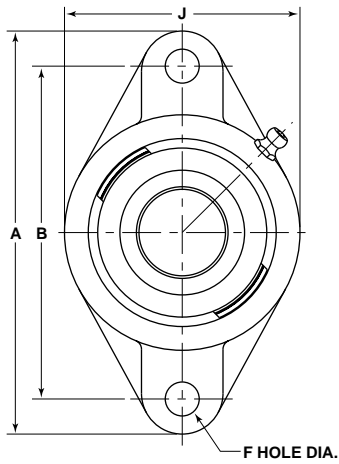


VANGUARD® "R" SEAL

Unit Number	Shaft Diameter	Basic Outer Ring	J	A	D	B	F	E	C	K
§ TNR-1 5/8-R	1 5/8	209	4 3/8	7 1/16	1 17/32	5 27/32	19/32	2 7/32	11/16	2 31/64
§ TNR-1 11/16-R	1 11/16	209	4 3/8	7 1/16	1 17/32	5 27/32	19/32	2 7/32	11/16	2 31/64
§ TNR-1 3/4-R	1 3/4	209	4 3/8	7 1/16	1 17/32	5 27/32	19/32	2 7/32	11/16	2 31/64
§ TNR-1 13/16-R	1 13/16	210	4 9/16	7 7/16	1 7/8	6 3/16	19/32	2 3/8	23/32	2 47/64
§ TNR-1 7/8-R	1 7/8	210	4 9/16	7 7/16	1 7/8	6 3/16	19/32	2 3/8	23/32	2 47/64
§ TNR-1 15/16-R	1 15/16	210	4 9/16	7 7/16	1 7/8	6 3/16	19/32	2 3/8	23/32	2 47/64
§ TNR-2-2R	2	210	4 9/16	7 7/16	1 7/8	6 3/16	19/32	2 3/8	23/32	2 47/64

§ NOT NECESSARILY A STOCK ITEM – CHECK FOR AVAILABILITY.

## TNR—2-Bolt Cast Iron Flange Units Extended Inner Ring Bearings VANGUARD® Narrow Single Lip Seals

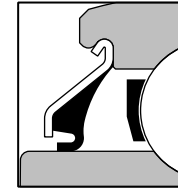
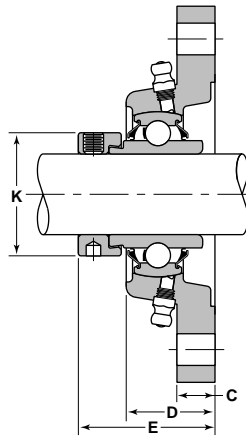
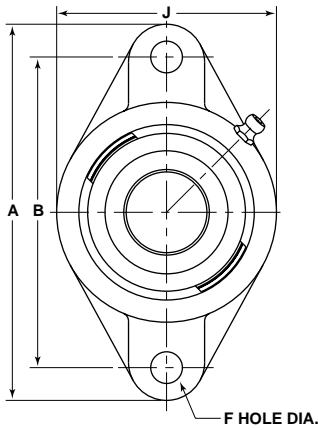


VANGUARD® "R" SEAL

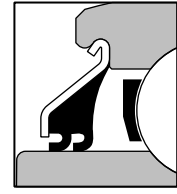
Basic Load Ratings		Bearing Number®	Housing Number	Collar Number
Dynamic C	Static C <sub>0</sub>			
lbs/N				
7020 31240	4570 20320	§ NPS-110-RRC	T-85-R	C-110
7020 31240	4570 20320	§ NPS-111-RRC	T-85-R	C-111
7020 31240	4570 20320	§ NPS-112-RRC	T-85-R	C-112
7890 35070	5210 23180	§ NPS-113-RRC	T-90-R	§ C-113
7890 35070	5210 23180	§ NPS-114-RRC	T-90-R	§ C-114
7890 35070	5210 23180	§ NPS-115-RRC	T-90-R	C-115
7890 35070	5210 23180	§ NPS-115-RR2C	T-90-R	§ C-115-2

§ NOT NECESSARILY A STOCK ITEM – CHECK FOR AVAILABILITY.

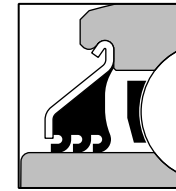
**TWG, TWV & TWT—2-Bolt Cast Iron Flange Units  
Wide Inner Ring Bearings  
VANGUARD® Wide Single, Double and Triple Lip Seals**



VANGUARD® "G" SEAL



VANGUARD® "V" SEAL

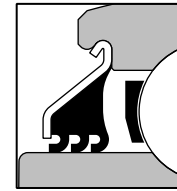
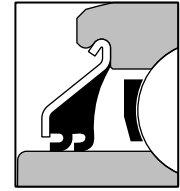
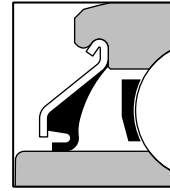
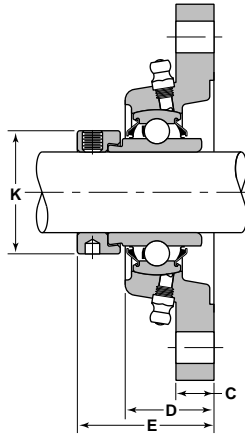
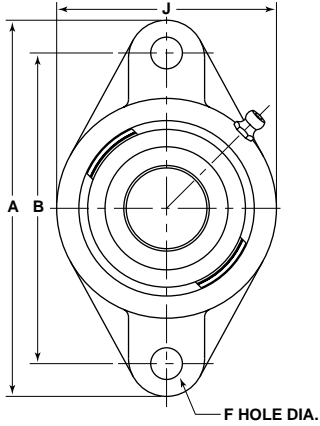


VANGUARD® "T" SEAL

Unit With Vanguard "G" Seal	Unit With Vanguard "V" Seal	Unit With Vanguard "T" Seal	Shaft Diameter	Basic Outer Ring	J	A	D	B
TWG-3/4-R	§ TWV-3/4-R		3/4	204	2 3/8	4 13/32	1 3/32	3 17/32
§ TWG-13/16-R	§ TWV-13/16-R	§ TWT-13/16-R	13/16	205	2 3/4	4 7/8	1 5/32	3 57/64
§ TWG-7/8-R	§ TWV-7/8-R	§ TWT-7/8-R	7/8	205	2 3/4	4 7/8	1 5/32	3 57/64
§ TWG-15/16-R	§ TWV-15/16-R	§ TWT-15/16-R	15/16	205	2 3/4	4 7/8	1 5/32	3 57/64
TWG-1-R	§ TWV-1-R	TWT-1-R	1	205	2 3/4	4 7/8	1 5/32	3 57/64
§ TWG-1 1/16-RM	§ TWV-1 1/16-RM	§ TWT-1 1/16-RM	1 1/16	206	3 1/4	5 9/16	1 5/16	4 19/32
§ TWG-1 1/8-R	§ TWV-1 1/8-R	§ TWT-1 1/8-R	1 1/8	206	3 1/4	5 9/16	1 5/16	4 19/32
TWG-1 3/16-RM	§ TWV-1 3/16-RM	TWT-1 3/16-RM	1 3/16	206	3 1/4	5 9/16	1 5/16	4 19/32
§ TWG-1 1/4-2R	§ TWV-1 1/4-2R	§ TWT-1 1/4-2R	1 1/4	206	3 1/4	5 9/16	1 5/16	4 19/32
TWG-1 1/4-R	§ TWV-1 1/4-R	TWT-1 1/4-R	1 1/4	207	3 3/4	6 1/8	1 15/32	5 1/8
§ TWG-1 5/16-RM	§ TWV-1 5/16-RM	§ TWT-1 5/16-RM	1 5/16	207	3 3/4	6 1/8	1 15/32	5 1/8
TWG-1 3/8-R	§ TWV-1 3/8-R	§ TWT-1 3/8-R	1 3/8	207	3 3/4	6 1/8	1 15/32	5 1/8
TWG-1 7/16-R	§ TWV-1 7/16-R	TWT-1 7/16-R	1 7/16	207	3 3/4	6 1/8	1 15/32	5 1/8
TWG-1 1/2-R	§ TWV-1 1/2-R	§ TWT-1 1/2-R	1 1/2	208	4 1/8	6 3/4	1 13/32	5 21/32
§ TWG-1 9/16-R	§ TWV-1 9/16-R	§ TWT-1 9/16-R	1 9/16	208	4 1/8	6 3/4	1 13/32	5 21/32
§ TWG-1 5/8-R		§ TWT-1 5/8-R	1 5/8	209	4 3/8	7 1/16	1 17/32	5 27/32
§ TWG-1 11/16-R		TWT-1 11/16-R	1 11/16	209	4 3/8	7 1/16	1 17/32	5 27/32
TWG-1 3/4-R		§ TWT-1 3/4-R	1 3/4	209	4 3/8	7 1/16	1 17/32	5 27/32

ⓘ BEARING NUMBER FOR TWG UNIT ONLY. TWV UNIT USES WPS-VRC SERIES AND TWT UNIT USES WPS-TRC SERIES.  
§ NOT NECESSARILY A STOCK ITEM – CHECK FOR AVAILABILITY.

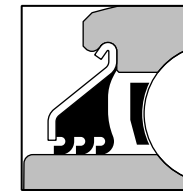
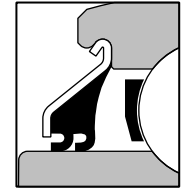
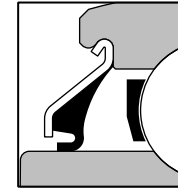
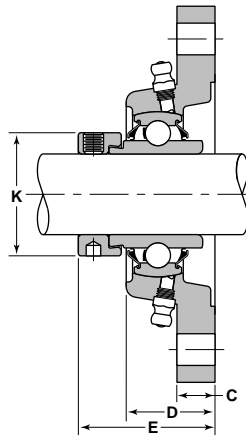
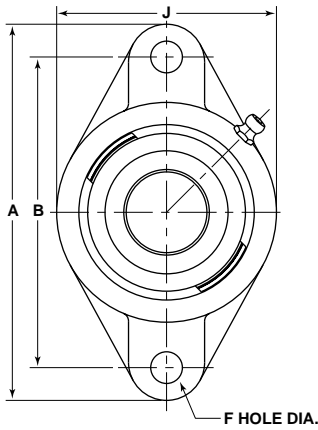
## TWG, TWV & TWT—2-Bolt Cast Iron Flange Units Wide Inner Ring Bearings VANGUARD® Wide Single, Double and Triple Lip Seals



F	E	C	K	Basic Load Ratings		Bearing Number <sup>①</sup>	Housing Number	Collar Number
				Dynamic C	Static C <sub>0</sub>			
Inch				lbs/N				
1 <sup>3</sup> / <sub>32</sub>	1 47 <sup>7</sup> / <sub>64</sub>	7 <sup>1</sup> / <sub>16</sub>	1 5 <sup>1</sup> / <sub>16</sub>	2880 12790	1480 6580	WPS-012-GRC	T-47-R	C-012
1 <sup>5</sup> / <sub>32</sub>	1 25 <sup>5</sup> / <sub>32</sub>	1 <sup>1</sup> / <sub>2</sub>	1 1 <sup>1</sup> / <sub>2</sub>	3150 14010	1760 7830	WPS-013-GRC	T-52-R	§ C-013
1 <sup>5</sup> / <sub>32</sub>	1 25 <sup>5</sup> / <sub>32</sub>	1 <sup>1</sup> / <sub>2</sub>	1 1 <sup>1</sup> / <sub>2</sub>	3150 14010	1760 7830	WPS-014-GRC	T-52-R	C-014
1 <sup>5</sup> / <sub>32</sub>	1 25 <sup>5</sup> / <sub>32</sub>	1 <sup>1</sup> / <sub>2</sub>	1 1 <sup>1</sup> / <sub>2</sub>	3150 14010	1760 7830	WPS-015-GRC	T-52-R	C-015
1 <sup>5</sup> / <sub>32</sub>	1 25 <sup>5</sup> / <sub>32</sub>	1 <sup>1</sup> / <sub>2</sub>	1 1 <sup>1</sup> / <sub>2</sub>	3150 14010	1760 7830	WPS-100-GRC	T-52-R	C-100
1 <sup>5</sup> / <sub>32</sub>	2 1 <sup>1</sup> / <sub>32</sub>	9 <sup>1</sup> / <sub>16</sub>	1 3 <sup>3</sup> / <sub>4</sub>	4370 19450	2530 11260	WPS-101-GRC	T-62-R	C-101
1 <sup>5</sup> / <sub>32</sub>	2 1 <sup>1</sup> / <sub>32</sub>	9 <sup>1</sup> / <sub>16</sub>	1 3 <sup>3</sup> / <sub>4</sub>	4370 19450	2530 11260	WPS-102-GRC	T-62-R	C-102
1 <sup>5</sup> / <sub>32</sub>	2 1 <sup>1</sup> / <sub>32</sub>	9 <sup>1</sup> / <sub>16</sub>	1 3 <sup>3</sup> / <sub>4</sub>	4370 19450	2530 11260	WPS-103-GRC	T-62-R	C-103
1 <sup>5</sup> / <sub>32</sub>	2 1 <sup>1</sup> / <sub>32</sub>	9 <sup>1</sup> / <sub>16</sub>	1 3 <sup>3</sup> / <sub>4</sub>	4370 19450	2530 11260	WPS-103-GR2C	T-62-R	C-103-2
1 <sup>7</sup> / <sub>32</sub>	2 13 <sup>3</sup> / <sub>64</sub>	5 <sup>5</sup> / <sub>8</sub>	2 1 <sup>1</sup> / <sub>8</sub>	5770 25670	3440 15300	WPS-104-GRC	T-72-R	C-104
1 <sup>7</sup> / <sub>32</sub>	2 13 <sup>3</sup> / <sub>64</sub>	5 <sup>5</sup> / <sub>8</sub>	2 1 <sup>1</sup> / <sub>8</sub>	5770 25670	3440 15300	WPS-105-GRC	T-72-R	C-105
1 <sup>7</sup> / <sub>32</sub>	2 13 <sup>3</sup> / <sub>64</sub>	5 <sup>5</sup> / <sub>8</sub>	2 1 <sup>1</sup> / <sub>8</sub>	5770 25670	3440 15300	WPS-106-GRC	T-72-R	C-106
1 <sup>7</sup> / <sub>32</sub>	2 13 <sup>3</sup> / <sub>64</sub>	5 <sup>5</sup> / <sub>8</sub>	2 1 <sup>1</sup> / <sub>8</sub>	5770 25670	3440 15300	WPS-107-GRC	T-72-R	C-107
1 <sup>7</sup> / <sub>32</sub>	2 1 <sup>1</sup> / <sub>4</sub>	5 <sup>5</sup> / <sub>8</sub>	2 3 <sup>3</sup> / <sub>8</sub>	6540 29110	4020 17900	WPS-108-GRC	T-80-R	C-108
1 <sup>7</sup> / <sub>32</sub>	2 1 <sup>1</sup> / <sub>4</sub>	5 <sup>5</sup> / <sub>8</sub>	2 3 <sup>3</sup> / <sub>8</sub>	6540 29110	4020 17900	WPS-109-GRC	T-80-R	§ C-109
1 <sup>9</sup> / <sub>32</sub>	2 7 <sup>1</sup> / <sub>32</sub>	11 <sup>1</sup> / <sub>16</sub>	2 1 <sup>1</sup> / <sub>2</sub>	7020 31240	4570 20320	WPS-110-GRC	T-85-R	C-110
1 <sup>9</sup> / <sub>32</sub>	2 7 <sup>1</sup> / <sub>32</sub>	11 <sup>1</sup> / <sub>16</sub>	2 1 <sup>1</sup> / <sub>2</sub>	7020 31240	4570 20320	WPS-111-GRC	T-85-R	C-111
1 <sup>9</sup> / <sub>32</sub>	2 7 <sup>1</sup> / <sub>32</sub>	11 <sup>1</sup> / <sub>16</sub>	2 1 <sup>1</sup> / <sub>2</sub>	7020 31240	4570 20320	WPS-112-GRC	T-85-R	C-112

① BEARING NUMBER FOR TWG UNIT ONLY. TWV UNIT USES WPS-VRC SERIES AND TWT UNIT USES WPS-TRC SERIES.  
§ NOT NECESSARILY A STOCK ITEM – CHECK FOR AVAILABILITY.

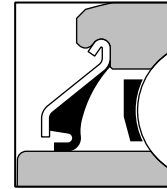
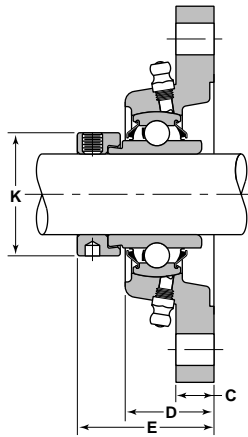
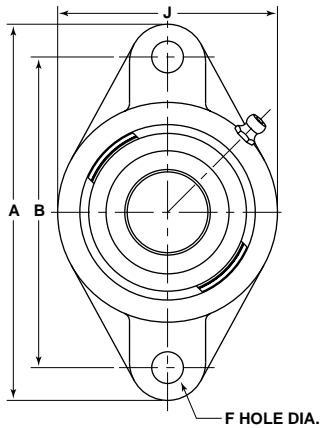
**TWG, TWV & TWT—2-Bolt Cast Iron Flange Units  
Wide Inner Ring Bearings  
VANGUARD® Wide Single, Double and Triple Lip Seals**



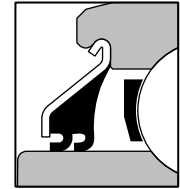
Unit With Vanguard "G" Seal	Unit With Vanguard "V" Seal	Unit With Vanguard "T" Seal	Shaft Diameter	Basic Outer Ring	J	A	D	B
					Inch			
§ TWG-1 1 <sup>3</sup> / <sub>16</sub> -R		§ TWT-1 1 <sup>3</sup> / <sub>16</sub> -R	1 1 <sup>3</sup> / <sub>16</sub>	210	4 9/ <sub>16</sub>	7 7/ <sub>16</sub>	1 7/ <sub>8</sub>	6 3/ <sub>16</sub>
§ TWG-1 7/ <sub>8</sub> -R		§ TWT-1 7/ <sub>8</sub> -R	1 7/ <sub>8</sub>	210	4 9/ <sub>16</sub>	7 7/ <sub>16</sub>	1 7/ <sub>8</sub>	6 3/ <sub>16</sub>
§ TWG-1 1 <sup>5</sup> / <sub>16</sub> -R		§ TWT-1 1 <sup>5</sup> / <sub>16</sub> -R	1 1 <sup>5</sup> / <sub>16</sub>	210	4 9/ <sub>16</sub>	7 7/ <sub>16</sub>	1 7/ <sub>8</sub>	6 3/ <sub>16</sub>
§ TWG-2-2R		§ TWT-2-2R	2	210	4 9/ <sub>16</sub>	7 7/ <sub>16</sub>	1 7/ <sub>8</sub>	6 3/ <sub>16</sub>

ⓘ BEARING NUMBER FOR TWG UNIT ONLY. TWV UNIT USES WPS-VRC SERIES AND TWT UNIT USES WPS-TRC SERIES.  
§ NOT NECESSARILY A STOCK ITEM – CHECK FOR AVAILABILITY.

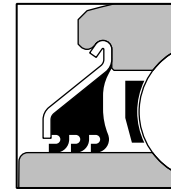
## TWG, TWV & TWT—2-Bolt Cast Iron Flange Units Wide Inner Ring Bearings VANGUARD® Wide Single, Double and Triple Lip Seals



VANGUARD® "G" SEAL



VANGUARD® "V" SEAL

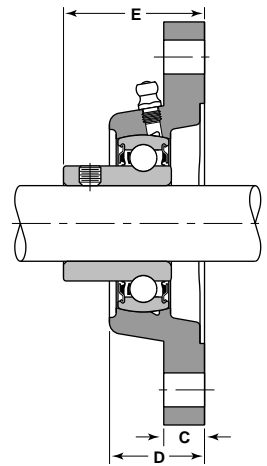
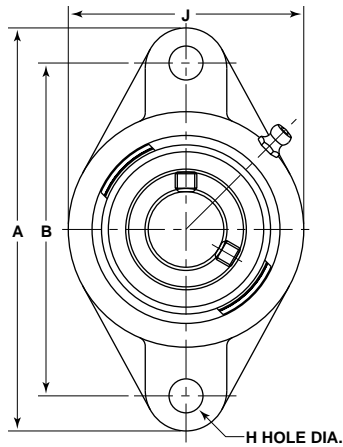


VANGUARD® "T" SEAL

F	E	C	K	Basic Load Ratings		Bearing Number <sup>①</sup>	Housing Number	Collar Number
				Dynamic C	Static C <sub>0</sub>			
Inch				lbs/N				
1 <sup>9</sup> / <sub>32</sub>	2 1 <sup>3</sup> / <sub>32</sub>	2 <sup>3</sup> / <sub>32</sub>	2 3 <sup>4</sup> / <sub>4</sub>	7890 35070	5210 23180	WPS-113-GRC	T-90-R	§ C-113
1 <sup>9</sup> / <sub>32</sub>	2 1 <sup>3</sup> / <sub>32</sub>	2 <sup>3</sup> / <sub>32</sub>	2 3 <sup>4</sup> / <sub>4</sub>	7890 35070	5210 23180	WPS-114-GRC	T-90-R	§ C-114
1 <sup>9</sup> / <sub>32</sub>	2 1 <sup>3</sup> / <sub>32</sub>	2 <sup>3</sup> / <sub>32</sub>	2 3 <sup>4</sup> / <sub>4</sub>	7890 35070	5210 23180	WPS-115-GRC	T-90-R	C-115
1 <sup>9</sup> / <sub>32</sub>	2 1 <sup>3</sup> / <sub>32</sub>	2 <sup>3</sup> / <sub>32</sub>	2 3 <sup>4</sup> / <sub>4</sub>	7890 35070	5210 23180	§ WPS-115-GR2C	T-90-R	§ C-115-2

① BEARING NUMBER FOR TWG UNIT ONLY. TWV UNIT USES WPS-VRC SERIES AND TWT UNIT USES WPS-TRC SERIES.  
§ NOT NECESSARILY A STOCK ITEM – CHECK FOR AVAILABILITY.

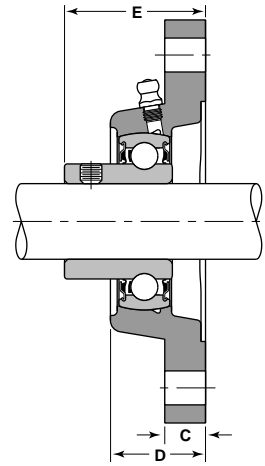
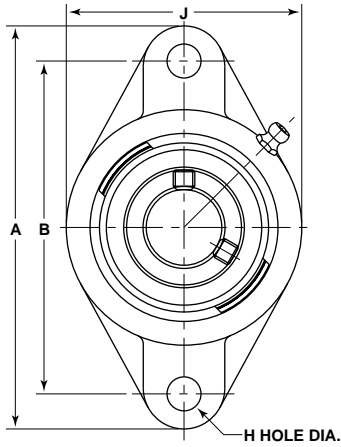
**SATNR—2-Bolt Flanged Set Screw Units**



Unit Number	Shaft Diameter	Basic Outer Ring	A	B	H	D	C	J
	Inch/mm							
SATNR-1/2-R	1/2	203	3 7/8	3	25/64	45/64	7/16	2 3/8
SATNR-5/8-R	5/8	203	3 7/8	3	25/64	45/64	7/16	2 3/8
SATNR-3/4-R	3/4	204	4 13/32	3 17/32	25/64	3/4	7/16	2 9/16
SATNR-7/8-R	7/8	205	4 7/8	3 57/64	15/32	25/32	7/16	2 3/4
SATNR-15/16-R	15/16	205	4 7/8	3 57/64	15/32	25/32	7/16	2 3/4
SATNR-1-R	1	206	4 7/8	3 57/64	15/32	25/32	7/16	2 3/4
SATNR-1 1/8-R	1 1/8	206	5 9/16	4 19/32	29/64	27/32	17/32	3 1/8
SATNR-1 3/16-R	1 3/16	206	5 9/16	4 19/32	29/64	27/32	17/32	3 1/8
SATNR-1 1/4-2R	1 1/4	206	5 9/16	4 19/32	29/64	27/32	17/32	3 1/8
SATNR-1 1/4-R	1 1/4	207	6 1/8	5 1/8	33/64	31/32	9/16	3 5/8
SATNR-1 3/8-R	1 3/8	207	6 1/8	5 1/8	33/64	31/32	9/16	3 5/8
SATNR-1 7/16-R	1 7/16	207	6 1/8	5 1/8	33/64	31/32	9/16	3 5/8
SATNR-1 1/2-R	1 1/2	208	6 3/4	5 21/32	33/64	1 1/32	9/16	4 1/8
§ SATNR-40-MRA	40	208	6 3/4	5 21/32	.490	1 1/32	9/16	4 1/8

§ NOT NECESSARILY A STOCK ITEM – CHECK FOR AVAILABILITY.

## SATNR—2-Bolt Flanged Set Screw Units



E	Basic Load Ratings		Bearing Number	Housing Number
	Dynamic C	Static C <sub>0</sub>		
Inch	lbs/N			
1	2150 9550	1070 4760	SNPS-008-RR	T-40-R
1	2150 9550	1070 4760	SNPS-010-RR	T-40-R
1 1/8	2880 12790	1480 6580	SNPS-012-RR	T-47-R
1 11/64	3150 14010	1760 7830	SNPS-014-RR	T-52-R
1 11/64	3150 14010	1760 7830	SNPS-015-RR	T-52-R
1 11/64	4370 19450	2530 11260	SNPS-100-RR	T-52-R
1 11/32	4370 19450	2530 11260	SNPS-102-RR	T-62-R
1 11/32	4370 19450	2530 11260	SNPS-103-RR	T-62-R
1 11/32	4370 19450	2530 11260	SNPS-103-RR2	T-62-R
1 1/2	5770 25670	3440 15300	SNPS-104-RR	T-72-R
1 1/2	5770 25670	3440 15300	SNPS-106-RR	T-72-R
1 1/2	5770 25670	3440 15300	SNPS-107-RR	T-72-R
1 39/64	6540 29110	4020 17900	SNPS-108-RR	T-80-R
1 19/32	6540 29110	4020 17900	SNPS-40-RR	T-80-R

§ NOT NECESSARILY A STOCK ITEM – CHECK FOR AVAILABILITY.

## NTN-BCA® Cast Iron Housings

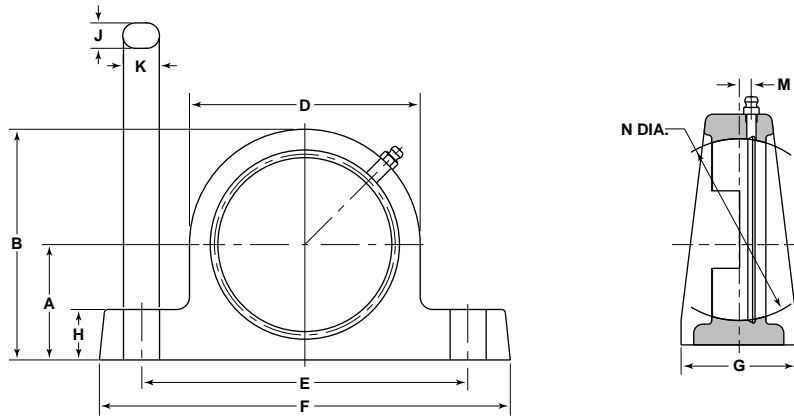
### Housing Part Numbers\*

Basic Outer Ring	Shaft Size	Standard Pillow Block	High C.L. Pillow Block	2-Bolt Flange	4-Bolt Flange	Take-Up Housing	Hanger Unit Housing	Light 2-Bolt Flange	Light 3-Bolt Flange
	Inch/mm								
203	1/2	P40R	P40RS	T40R	F40R	—	BS40R	FB40R	—
	9/16								
204	5/8	P47R	P47RS	T47R	F47R	—	—	—	FB3-47R
	17								
205	3/4	P52R	P52RS	T52R	F52R	TU52R	BS52R	FB52R	FB3-52R
	13/16								
206	7/8	P62R	P62RS	T62R	F62R	—	BS62R	FB62R	FB3-62R
	15/16								
207	1	P72R	P72RS	T72R	F72R	—	—	FB72R	FB3-72R
	1 1/16								
208	1 1/8	P80R	P80RS	T80R	F80R	—	—	—	—
	1 1/4								
209	1 1/4	P85R	P85RS	T85R	F85R	—	—	—	—
	1 5/8								
210	1 3/4	P90R	P90RS	T90R	F90R	—	—	—	—
	1 7/8								
211	1 15/16	P100R	—	—	F100R	—	—	—	—
	2								
212	2	P110R	—	—	F110R	—	—	—	—
	2 1/4								

① PAINTED, MACHINED HOUSINGS WITH STANDARD GREASE FITTING INCLUDED, BOXED.

⊗ EXPANDED BORE

## Cast Iron Pillow Blocks



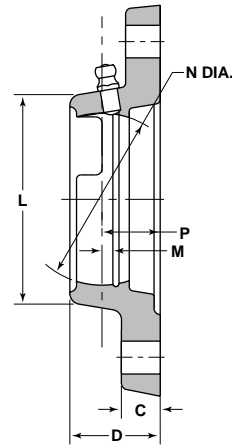
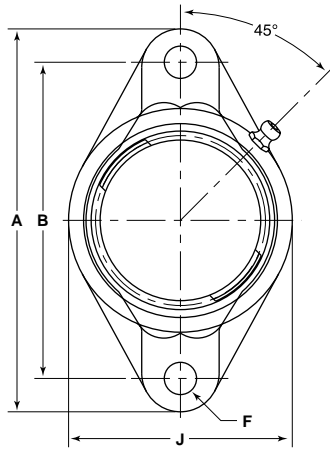
Part Number	Basic Outer Ring	A	B	D	J	N	M	K	E	F	H	G
P40R	203	1 1/16	2 1/8	2 1/8	7/8	1.5748	0.098	9/16	3 1/2	4 3/4	1/2	1 1/4
P40RS	203	1 3/16	2 1/4	2 1/8	7/8	1.5748	0.098	9/16	3 1/2	4 3/4	1/2	1 1/4
P47R❶	204	1 1/4	2 1/2	2 1/2	7/16	1.8504	0.12	5/8	3 7/8	5 1/4	9/16	1 1/2
P47RS❶	204	1 5/16	2 9/16	2 1/2	7/16	1.8504	0.12	5/8	3 7/8	5 1/4	9/16	1 1/2
P52R❶	205	1 5/16	2 11/16	2 3/4	7/16	2.0472	0.12	5/8	4 1/8	5 1/2	5/8	1 5/8
P52RS❶	205	1 7/16	2 13/16	2 3/4	7/16	2.0472	0.12	5/8	4 1/8	5 1/2	5/8	1 5/8
P62R❶	206	1 9/16	3 5/32	3 3/16	9/16	2.4409	0.144	3/4	4 3/4	6 5/16	3/4	1 3/4
P62RS❶	206	1 11/16	3 9/32	3 3/16	9/16	2.4409	0.144	3/4	4 3/4	6 5/16	3/4	1 3/4
P72R❶	207	1 13/16	3 5/8	3 5/8	9/16	2.8346	0.164	3/4	5	6 9/16	13/16	1 7/8
P72RS❶	207	1 7/8	3 11/16	3 5/8	9/16	2.8346	0.164	3/4	5	6 9/16	13/16	1 7/8
P80R	208	1 15/16	3 15/16	4	9/16	3.1496	0.238	3/4	5 1/2	7 1/8	7/8	2
P80RS	208	2	4	4	9/16	3.1496	0.238	3/4	5 1/2	7 1/8	7/8	2
P85R	209	2 1/16	4 3/16	4 1/4	9/16	3.3465	0.213	3/4	5 3/4	7 1/2	15/16	2 1/8
P85RS	209	2 1/8	4 1/4	4 1/4	9/16	3.3465	0.213	3/4	5 3/4	7 1/2	15/16	2 1/8
P90R	210	2 3/16	4 7/16	4 1/2	11/16	3.5433	0.213	15/16	6 1/4	8	1	2 1/4
P90RS	210	2 1/4	4 1/2	4 1/2	11/16	3.5433	0.213	15/16	6 1/4	8	1	2 1/4
P100R	211	2 7/16	4 29/32	4 15/16	11/16	3.9370	0.295	15/16	7 1/8	9 1/8	1 1/16	2 3/8
P110R	212	2 11/16	5 3/8	5 3/8	11/16	4.3307	0.330	15/16	7 1/2	9 1/2	1 1/8	2 1/2

❶ INCLUDES GREASE GROOVE IN BEARING SEAT.

R SUFFIX STANDARD BASE-TO-CENTER LINE.

RS SUFFIX HIGH BASE-TO-CENTER LINE.

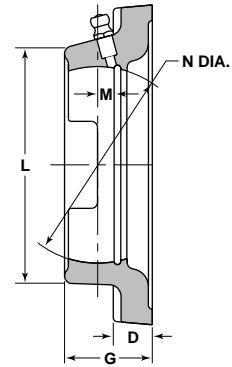
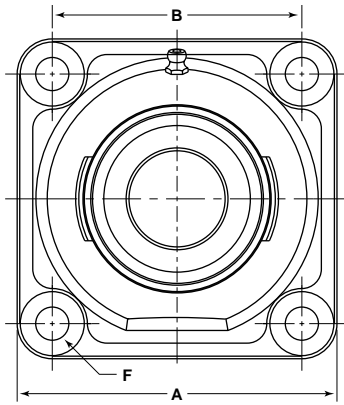
### Two Bolt Flange Housings



Part Number	Basic Outer Ring	A	B	M	L	N	P	F		D	C	J
								Hole	Bolt			
Inch												
T40R	203	3 7/8	3	.098	1 7/8	1.5748	21/32	13/32	3/8	1 1/64	7/16	2 5/16
T47R ❶	204	4 13/32	3 17/32	.152	2 5/32	1.8504	11/16	13/32	3/8	1 3/32	7/16	2 3/8
T52R ❶	205	4 7/8	3 57/64	.152	2 15/32	2.0472	23/32	15/32	7/16	1 5/32	1/2	2 3/4
T62R ❶	206	5 9/16	4 19/32	.190	3	2.4409	27/32	15/32	7/16	1 5/16	9/16	3 1/4
T72R ❶	207	6 1/8	5 1/8	.203	3 13/32	2.8346	15/16	17/32	1/2	1 15/32	5/8	3 3/4
T80R	208	6 3/4	5 21/32	.224	3 23/32	3.1496	7/8	17/32	1/2	1 13/32	5/8	4 1/8
T85R	209	7 1/16	5 27/32	.248	3 7/8	3.3465	15/16	19/32	9/16	1 17/32	11/16	4 3/8
T90R	210	7 7/16	6 3/16	.240	4 9/32	3.5433	1 1/8	19/32	9/16	1 7/8	23/32	4 9/16

❶ INCLUDES GREASE GROOVE IN BEARING SEAT.

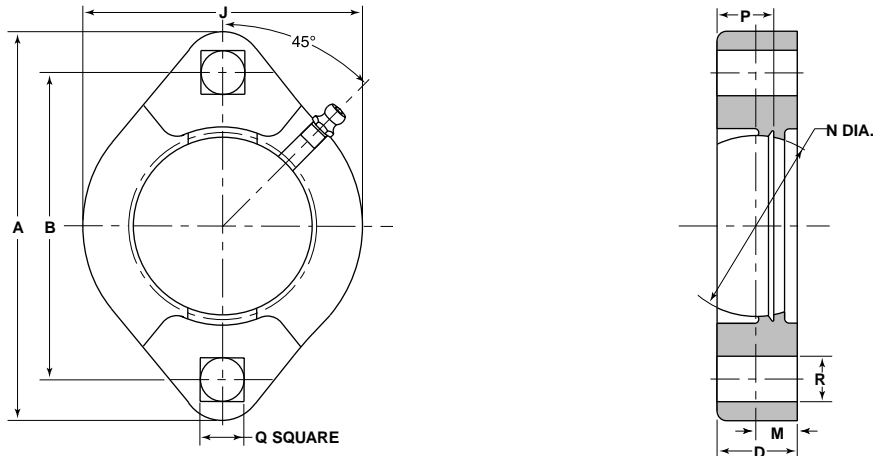
## Four Bolt Flange Housings



Part Number	Basic Outer Ring	A	B	N	L	M	F		D	G
							Hole	Bolt		
Inch										
F40R	203	3	2 1/8	1.5748	1 7/8	.098	13/32	3/8	7/16	1 1/64
F47R ❶	204	3 3/8	2 1/2	1.8504	2 3/16	.120	13/32	3/8	7/16	1 3/32
F52R ❶	205	3 3/4	2 3/4	2.0472	2 17/32	.120	15/32	7/16	1/2	1 5/32
F62R ❶	206	4 1/4	3 1/4	2.4409	3	.144	15/32	7/16	9/16	1 5/16
F72R ❶	207	4 5/8	3 5/8	2.8346	3 7/16	.164	17/32	1/2	5/8	1 15/32
F80R	208	5 1/8	4	3.1496	3 3/4	.238	17/32	1/2	5/8	1 13/32
F85R	209	5 3/8	4 1/8	3.3465	4	.213	19/32	9/16	11/16	1 17/32
F90R	210	5 5/8	4 3/8	3.5431	4 9/32	.213	19/32	9/16	23/32	1 7/8
F100R	211	6 3/8	5 1/8	3.9370	4 3/4	.295	21/32	5/8	25/32	1 15/16
F110R	212	6 7/8	5 5/8	4.3307	5 1/4	.330	21/32	5/8	27/32	2 1/16

❶ INCLUDES GREASE GROOVE IN BEARING SEAT.

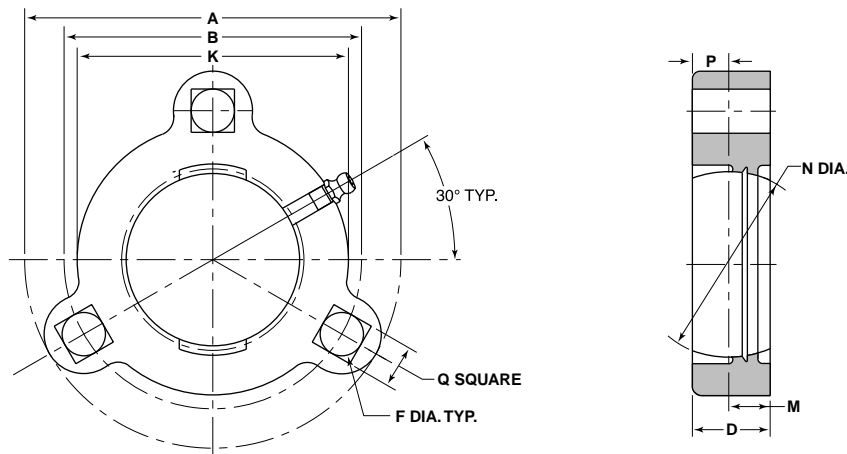
### Two Bolt Light Duty Flange Housings



Part Number	Basic Outer Ring	A	B	Q	R	N	J	M	P	D
FB40R ①	203	3 3/16	2 1/2	5/16	9/32	1.5748	2 5/16	3/8	11/32	11/16
FB52R ①	205	3 3/4	3	3/8	11/32	2.0472	2 51/64	3/8	11/32	11/16
FB62R ①	206	4 7/16	3 9/16	7/16	13/32	2.4409	3 5/16	15/32	13/32	13/16
FB72R ①	207	4 15/16	3 15/16	7/16	13/32	2.8346	3 11/16	1/2	7/16	7/8

① INCLUDES GREASE GROOVE IN BEARING SEAT.

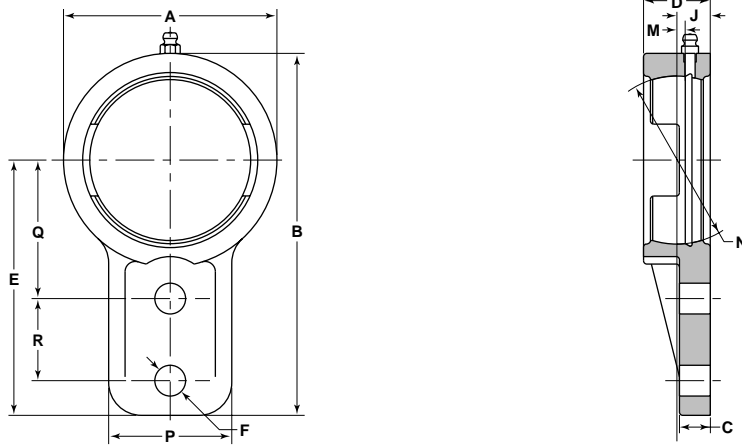
### Three Bolt Light Duty Flange Housings



Part Number	Basic Outer Ring	A	B	Q	F	N	K	M	P	D
FB3-47R ①	204	3 9/16	2 3/16	3/8	11/32	1.8504	2 5/8	3/8	11/32	11/16
FB3-52R ①	205	3 3/4	3	3/8	11/32	2.0472	2 51/64	3/8	11/32	11/16
FB3-62R ①	206	4 7/16	3 9/16	7/16	13/32	2.4409	3 5/16	15/32	13/32	13/16
FB3-72R ①	207	4 15/16	3 15/16	7/16	13/32	2.8346	3 11/16	1/2	7/16	7/8

① INCLUDES GREASE GROOVE IN BEARING SEAT.

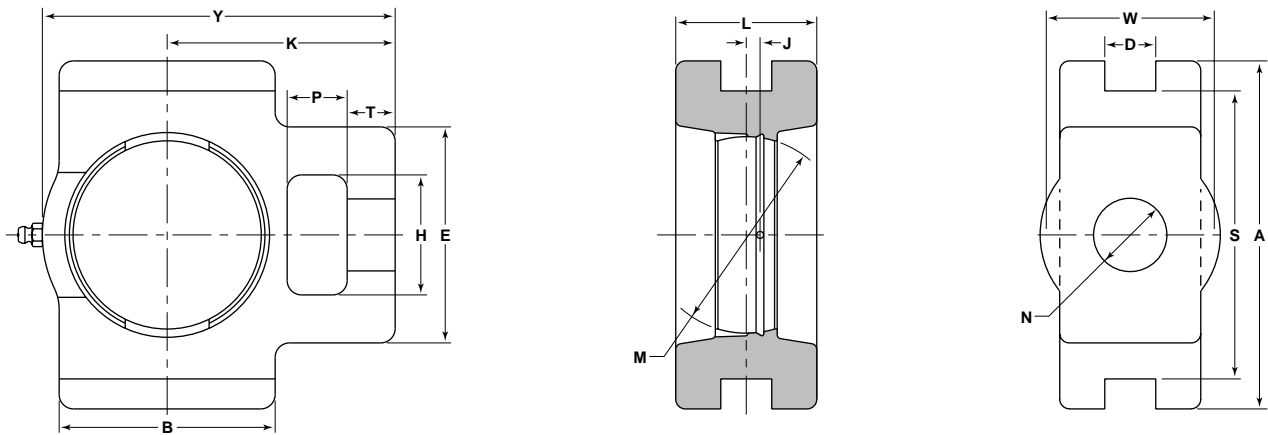
## Hanger Unit Housings



Part Number	Basic Outer Ring	B	A	E	R	F		J	M	Q	P	N	C	D
						Hole	Bolt							
Inch														
BS40RZ ①	203	3 7/8	2 3/16	2 25/32	1	13/32	3/8	3/8	.098	1 7/16	1 5/16	1.5748	3/8	3/4
BS52RZ ①	205	4 7/16	2 21/32	3 7/64	1	13/32	3/8	13/32	.120	1 11/16	1 1/2	2.0472	3/8	13/16
BS62RZ ①	206	5 11/32	3 3/16	3 3/4	1 1/4	13/32	3/8	7/16	.144	2	1 7/8	2.4409	1/2	7/8

① INCLUDES GREASE GROOVE IN BEARING SEAT.

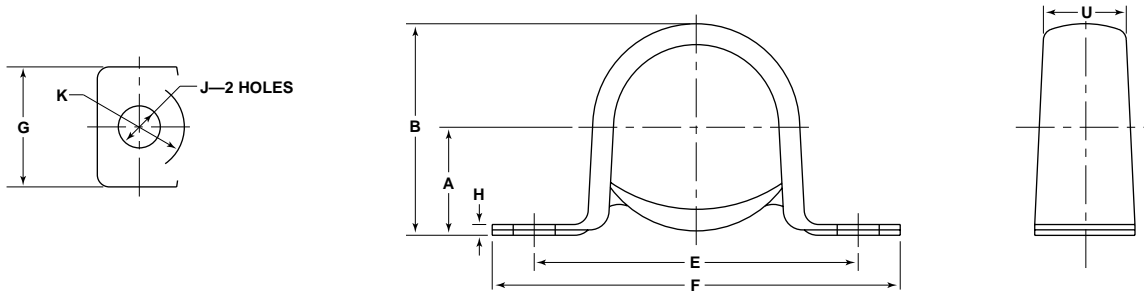
## Take Up Housings



Part Number	Basic Outer Ring	A	B	D	E	H	J	K	L	M	N	P	S	T	W	Y
TU52R ①	205	3 5/8	2 1/4	.531	2 1/4	1 1/4	.120	2 12/32	1 15/32	2.0472	3/4	5/8	3	1/2	1 3/4	4 1/32

① INCLUDES GREASE GROOVE IN BEARING SEAT.

## Stamped Steel Pillow Block Housings



Part Number	Basic Outer Ring	A	B	E	F	G	H	J	K	U
40-MPB	203	$\frac{7}{8}$	$1 \frac{23}{32}$	$2 \frac{11}{16}$	$3 \frac{3}{8}$	1	.100	$\frac{3}{8}$	$\frac{13}{32}$	.718
47-MPB	204	1	$1 \frac{63}{64}$	3	$3 \frac{7}{8}$	$1 \frac{1}{4}$	.100	$\frac{3}{8}$	$\frac{13}{32}$	.859
52-MPB	205	$1 \frac{1}{8}$	$2 \frac{13}{64}$	$3 \frac{3}{8}$	$4 \frac{1}{4}$	$1 \frac{1}{4}$	.112	$\frac{7}{16}$	$\frac{15}{32}$	.859
62-MPB	206	$1 \frac{5}{16}$	$2 \frac{19}{32}$	$3 \frac{3}{4}$	$4 \frac{5}{8}$	$1 \frac{1}{2}$	.133	$\frac{7}{16}$	$\frac{15}{32}$	1.000



**Cast Iron Housings For Re-lubricatable Adapter Bearings**

**Housing To Bearing Chart**

**Mounting Flange To Bearing Chart**

Housing Number	Wide Inner Ring Bearing Number	Wide Inner Ring—Triple Lip Bearing Number	Hex Bore & Disc Harrow Bearing Number <sup>Ⓢ</sup>
P-40-R P-40-RS T-40-R F-40-R BS-40-R FB-40-R	WPS-012-GRC		
P-47-R P-47-RS P-47-R T-47-R FB3-47-R			
P-52-R P-52-RS F-52-R T-52-R TU-52-R BS-52-R FB-52-R FB3-52-R	WPS-013-GRC WPS-014-GRC WPS-015-GRC WPS-100-GPDC WPS-100-GRC	WPS-100-TRC	Ⓢ HPS-014-GP
P-62-R P-62-RS F-62-R T-62-R BS-62-R FB-62-R FB3-62-R	WPS-101-GRC WPS-102-GRC WPS-103-GRC WPS-103-GR2C	WPS-103-TRC WPS-103-TR2C	Ⓢ HPS-100-GP Ⓢ HPS-100-TPD HPS-100-TR
P-72-R P-72-RS F-72-R T-72-R FB-72-R FB3-72-R	WPS-104-GRC WPS-105-GRC WPS-106-GRC WPS-107-GRC	WPS-104-TRC WPS-107-TRC	Ⓢ HPS-102-GPE HPS-102-GR Ⓢ HPS-103-GP3 Ⓢ HPS-103-TP2
P-80-R P-80-RS F-80-R T-80-R	WPS-108-GRC WPS-109-GRC	WPS-108-TRC	DS-208-TTR5 DS-208-TTR6 DS-208-TTR21 HPS-104-TR Ⓢ HPS-106-GP Ⓢ DS-208-TT5 Ⓢ DS-208-TT6 Ⓢ DS-208-TT7 Ⓢ DS-208-TT13
P-85-R P-85-RS F-85-R T-85-R	WPS-110-GRC WPS-111-GRC WPS-112-GRC	WPS-111-TRC WPS-112-TRC	Ⓢ HPS-108-GPA Ⓢ HPS-108-GPH DS-209-TTR8 DS-209-TTR10
P-90-R P-90-RS F-90-R T-90-R	WPS-113-GRC WPS-114-GRC WPS-115-GRC WPS-115-GR2C	WPS-115-TRC	Ⓢ HPS-102-GPB
P-100-R F-100-R	WPS-200-GRC WPS-203-GRC	WPS-200-TRC WPS-203-TRC	DS-TTR8R DS-211-TTR9 DS-211-TTR13
P-110-R F-110-R	WPS-204-GRC WPS-207-GRC		

Mounting Flange Number	Wide Inner Ring Bearing Number <sup>Ⓢ</sup>	Disc Harrow Bearing Number	Hex Bore Bearing Number
40-MPB 40-MS 40-MST 40-MSTR	WPS-012-GPC		HPS-010-GP HPS-011-GP HPS-011-GPA
47-MPB 47-MS 47-MST 47-MSTR			
52-MPB 52-MS 52-MST 52-MSTR	WPS-013-GPC WPS-014-GPC WPS-015-GPC WPS-100-GPC		HPS-012-GP HPS-014-GP
G-52-MSA <sup>Ⓢ</sup>	WPS-013-GRC WPS-014-GRC WPS-015-GRC WPS-100-GRC		
62-MPB 62-MS 62-MST 62-MSTR	WPS-101-GPC WPS-102-GPC WPS-103-GPC WPS-103-GP2C	DS-206-GG	HPS-100-GP
G-62-MSA <sup>Ⓢ</sup>	WPS-101-GRC WPS-102-GRC WPS-103-GRC WPS-103-GR2C		HPS-100-GR
72-MS 72-MST	WPS-104-GPC WPS-105-GPC WPS-106-GPC WPS-107-GPC		HPS-102-GP HPS-102-GPE HPS-102-GPN HPS-103-GP2 HPS-103-GP3
G-72-MSA <sup>Ⓢ</sup>	WPS-104-GRC WPS-105-GRC WPS-106-GRC WPS-107-GRC		HPS-102-GR
80-MS	WPS-108-GPC WPS-109-GPC	DS-208-TT2A DS-208-TT4 DS-208-TT5 DS-208-TT6 DS-208-TT7 DS-208-TT8 DS-208-TT13 DS-208-TT13B	HPS-106-GP
G-80-MSA <sup>Ⓢ</sup>	WPS-108-GRC WPS-109-GRC SWPS-108-GR	DS-208-TTR5 DS-208-TTR6 DS-208-TTR8 DS-208-TTR21	HPS-104-GR
85-MS	WPS-110-GPC WPS-111-GPC WPS-112-GPC	DS-209-TTGB DS-209-TT2 DS-209-TT4 DS-209-TT4A DS-209-TT5 DS-209-TT6E DS-209-TT7J DS-209-TT7K	HPS-108-GPA HPS-108-GPH

Ⓢ CONSULT NTN SALES OR ENGINEERING FOR COMPATIBILITY OF OTHER DISC BEARINGS, WIDER OUTER RING STYLES MAY ONLY FIT INTO MOUNTING FLANGES.

Ⓢ NOT RE-LUBRICATABLE.

Ⓢ AVAILABLE LESS COLLAR—OMIT SUFFIX "C"

Ⓢ RE-LUBRICATABLE

NOTE: PRE-LUBRICATED BEARING INSERTS MAY BE USED IN NTN-BCA® CAST IRON HOUSINGS ONLY IF RELUBRICATION IS NOT REQUIRED.

## Mounting Flange To Bearing Chart

Mounting Flange Number	Wide Inner Ring Bearing Number <sup>②</sup>	Disc Harrow Bearing Number	Hex Bore Bearing Number
G-85-MSA <sup>①</sup>	WPS-110-GRC WPS-111-GRC WPS-112-GRC	DS-209-TTR2 DS-209-TTR4 DS-209-TTR5 DS-209-TTR5B DS-209-TTR8 DS-209-TTR8A DS-209-TTR10 DS-209-TTR12 DS-209-TTR13 DS-209-TTR13A	
87-MS		DS-208-TT3 DS-208-T3 DS-208-TT11 DS-208-TT11A DS-208-TT12 DS-208-TT12A DS-208-TT12B DS-208-TT14 DS-209-TT6 DS-209-TT6H DS-209-TT7 DS-209-TT7M DS-209-TT7P	
90-MS	WPS-113-GPC WPS-114-GPC WPS-115-GPC WPS-115-GP2C	DS-210-TT2 DS-210-TT4 DS-210-TT5 DS-210-TT6	HPS-108-GPB
G-90-MSA <sup>①</sup>	WPS-113-GRC WPS-114-GRC WPS-115-GRC WPS-115-GR2C	DS-210-TTR2 DS-210-TTR4 DS-210-TTR5R DS-210-TTR5S	
100-MS		DS-211-TT2 DS-211-TT3 DS-211-TT4	
G-100-MSA <sup>①</sup>	WPS-200-GRC WPS-203-GRC	DS-211-TTR2 DS-211-TTR3 DS-211-TTR3B DS-211-TTR7A DS-211-TTR8 DS-211-TTR8R DS-211-TTR9 DS-211-TTR10A DS-211-TTR11 DS-211-TTR11A DS-211-TTR12 DS-211-TTR12A DS-211-TTR13 DS-211-TTR20 DS-211-TTR21A DS-211-TTR22 DS-211-TTR-24	HPS-112-TRA

① CONSULT NTN SALES OR ENGINEERING FOR COMPATIBILITY OF OTHER DISC BEARINGS, WIDER OUTER RING STYLES MAY ONLY FIT INTO MOUNTING FLANGES.

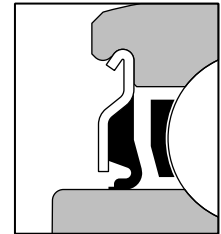
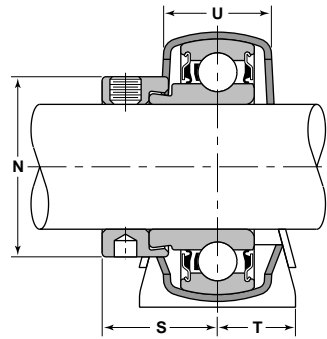
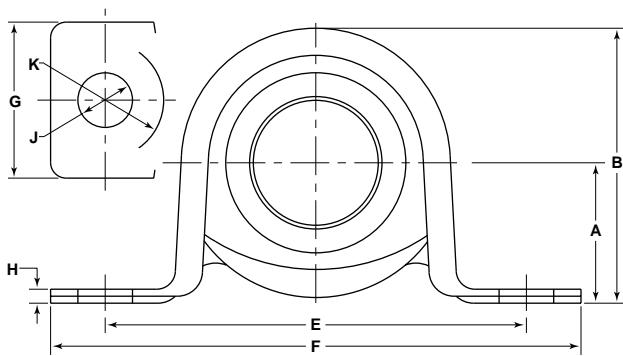
② NOT RE-LUBRICATABLE.

③ AVAILABLE LESS COLLAR—OMIT SUFFIX “C”

④ RE-LUBRICATABLE

NOTE: PRE-LUBRICATED BEARING INSERTS MAY BE USED IN NTN-BCA® CAST IRON HOUSINGS ONLY IF RELUBRICATION IS NOT REQUIRED.

**SPB—Stamped Pillow Blocks  
Extended Inner Ring Bearings  
VANGUARD® Narrow Single Lip Seals**



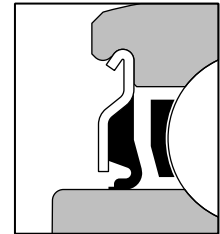
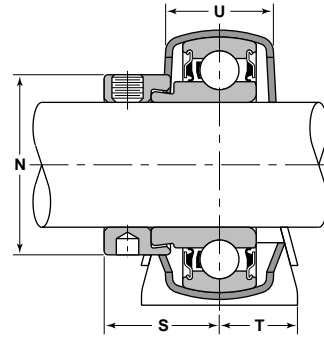
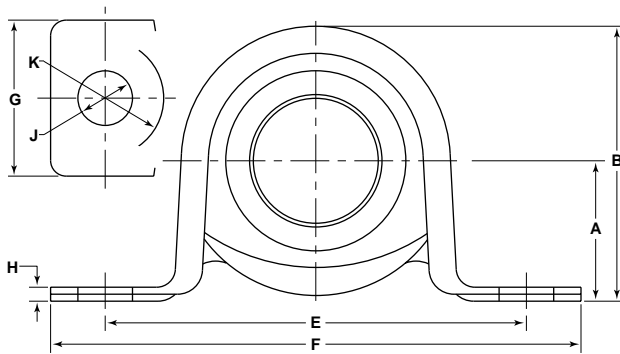
VANGUARD® "R" SEAL

Unit Number	Shaft Diameter	Basic Outer Ring	A	B	E	F	G	H	J	K
SPB-1/2	1/2	203	7/8	1 23/32	2 11/16	3 3/8	1	.100	3/8	13/32
SPB-9/16	9/16	203	7/8	1 23/32	2 11/16	3 3/8	1	.100	3/8	13/32
SPB-5/8	5/8	203	7/8	1 23/32	2 11/16	3 3/8	1	.100	3/8	13/32
SPB-3/4	3/4	204	1	1 63/64	3	3 3/8	1 1/4	.100	3/8	13/32
SPB-13/16	13/16	205	1 1/8	2 13/64	3 3/8	4 1/4	1 1/4	.112	7/16	15/32
SPB-7/8	7/8	205	1 1/8	2 13/64	3 3/8	4 1/4	1 1/4	.112	7/16	15/32
SPB-15/16	15/16	205	1 1/8	2 13/64	3 3/8	4 1/4	1 1/4	.112	7/16	15/32
SPB-1	1	205	1 1/8	2 13/64	3 3/8	4 1/4	1 1/4	.112	7/16	15/32
SPB-1 1/16	1 1/16	206	1 15/16	2 19/32	3 3/4	4 5/8	1 1/2	.133	7/16	15/32
§ SPB-1 1/8	1 1/8	206	1 15/16	2 19/32	3 3/4	4 5/8	1 1/2	.133	7/16	15/32
SPB-1 3/16	1 3/16	206	1 15/16	2 19/32	3 3/4	4 5/8	1 1/2	.133	7/16	15/32
SPB-1 1/4	1 1/4	206	1 15/16	2 19/32	3 3/4	4 5/8	1 1/2	.133	7/16	15/32

ⓘ DIMENSIONS FOR HIGH CENTERLINE; ADD SUFFIX "S" TO UNIT NUMBER AND HOUSING NUMBER.

§ NOT NECESSARILY A STOCK ITEM – CHECK FOR AVAILABILITY.

## SPB—Stamped Pillow Blocks Extended Inner Ring Bearings VANGUARD® Narrow Single Lip Seals



VANGUARD® "R" SEAL

N	U	S	T	Housing Load Ratings		Bearing Number <sup>①</sup>	Housing Number	Collar Number
				Radial	Thrust			
Inch				lbs				
1 1/8	.718	7/8	1/2	300	100	NPS-008-RPC	40-MPB	C-008
1 1/8	.718	7/8	1/2	300	100	NPS-009-RPC	40-MPB	C-009
1 1/8	.718	7/8	1/2	300	100	NPS-010-RPC	40-MPB	C-010
1 5/16	.859	59/64	5/8	350	115	NPS-012-RPC	47-MPB	C-012
1 1/2	.859	59/64	5/8	400	130	NPS-013-RPC	52-MPB	C-013
1 1/2	.859	59/64	5/8	400	130	NPS-014-RPC	52-MPB	C-014
1 1/2	.859	59/64	5/8	400	130	NPS-015-RPC	52-MPB	C-015
1 1/2	.859	59/64	5/8	400	130	NPS-100-RPC	52-MPB	C-100
1 3/4	1.000	1 3/64	3/4	600	200	NPS-101-RPC	62-MPB	C-101
1 3/4	1.000	1 3/64	3/4	600	200	NPS-102-RPC	62-MPB	C-102
1 3/4	1.000	1 3/64	3/4	600	200	NPS-103-RPC	62-MPB	C-103
1 3/4	1.000	1 3/64	3/4	600	200	NPS-104-RPC	62-MPB	C-104

① DIMENSIONS FOR HIGH CENTERLINE; ADD SUFFIX "S" TO UNIT NUMBER AND HOUSING NUMBER.