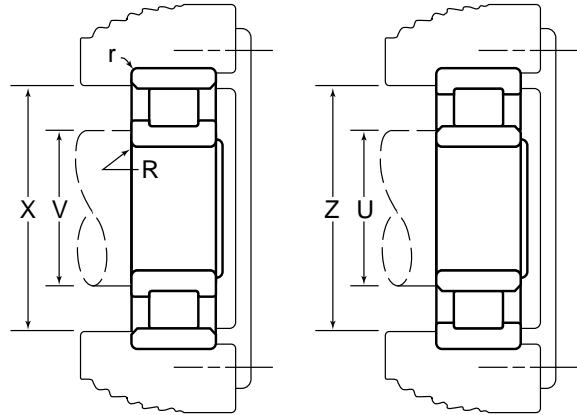


DIMENSIONS

The basic boundary dimensions (bore, outside diameter, width) in the following tables conform to the standards established by AFBMA/ANSI.

A description of dimensions represented by various letters is given below:

- B** Maximum bearing bore diameter. The minus tolerance is given on page 76 and the range in "Fitting Practice" section
- D** Maximum bearing O.D. The minus tolerance is given on page 76 and the range in "Fitting Practice" section
- W** Maximum bearing width. The minus tolerance is given on page 76
- A** Maximum O.D. of the inner ring raceway
- C** Minimum I.D. of the outer ring raceway
- F** Maximum rib O.D. of the inner ring
- H** Minimum rib I.D. of the outer ring
- R** Maximum fillet on the shaft that the bearing corner will clear
- r** Maximum fillet in the housing that the bearing corner will clear



- X** Recommended maximum housing shoulder diameter for plain outer rings
- V** Recommended minimum shaft shoulder diameter for ribbed inner rings
- Z** Recommended maximum housing shoulder diameter for ribbed outer rings
- U** Recommended minimum shaft shoulder diameter for plain inner rings

Dimensions shown in tables are given in both inch and metric units and are based on:

- 1 inch = 25.4 mm exactly
- 1 micrometre = $1\mu\text{m} = 10^{-6}\text{m}$
- 1 micrometre = .001 mm

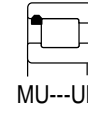
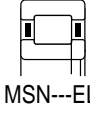
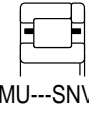
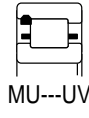
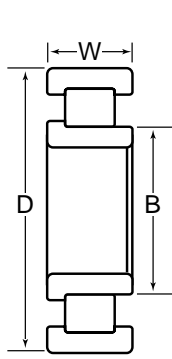
LOAD RATINGS

The radial load ratings in this catalog are based on 3000 hrs L10 life at 500 rpm or 90 million cycles for either inner or outer ring rotation. To convert this rating to 500 hrs L10 life at 33-1/3 rpm or 1 million cycles basis, multiply by 3.857.

The load ratings, dynamic and static, are shown in both pounds and newtons, i.e.,

- 1 pound = 4.448 newtons

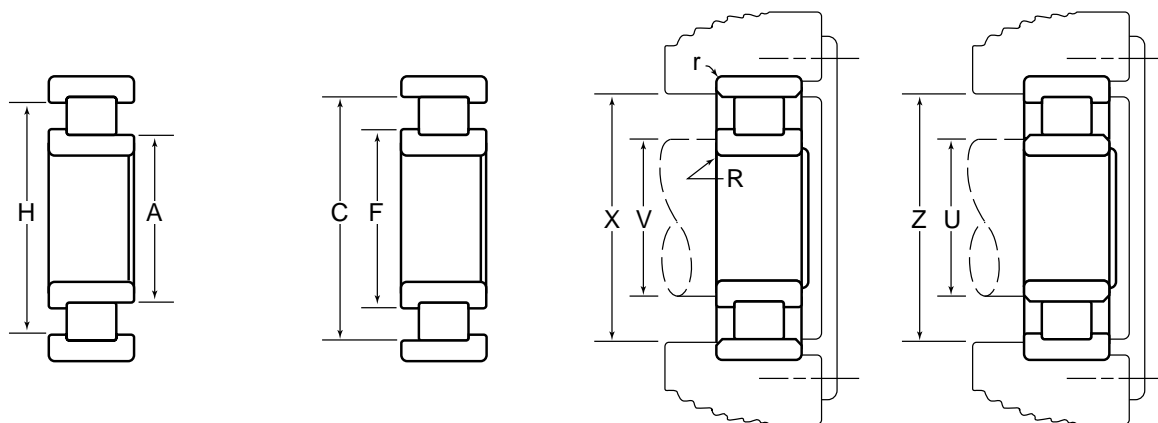
Cylindrical Roller Bearings



| Basic Bearing Number | Dimensions | | | Radial Load Ratings — lbs./N | | | | | | | | | | |
|----------------------|------------------|------------------|------------------|------------------------------|-----------------------|----------------|-----------------------|----------------|----------------------|----------------|------------------|----------------|---------------------------|--------|
| | B | D | | W | One Piece Steel Cage | | | | Composite Steel Cage | | X Bar Steel Cage | | Full Complement (No Cage) | |
| | | Bore Diameter | Outside Diameter | | Outer Ring Assemblies | | Inner Ring Assemblies | | Dynamic | Static | Dynamic | Static | Dynamic | Static |
| | Standard Style | | "A" * Style | Width | Dynamic | Static | Dynamic | Static | | | | | | |
| Inch/mm | | | | Dynamic | Static | Dynamic | Static | Dynamic | Static | Dynamic | Static | Dynamic | Static | |
| 1203 | 0.6693 17.000 | 1.5748 40.000 | | 0.4724 12.000 | 3950 17500 | 3300 14700 | | | | | | | | |
| 1204 | 0.7874 20.000 | 1.8504 47.000 | 1.8514 47.026 | 0.5512 14.000 | 4500 20000 | 4100 183000 | | | | | | | | |
| 5204 | 0.7874 20.000 | 1.8504 47.000 | 1.8514 47.026 | 0.8125 20.638 | 7400 33000 | 7750 34500 | | | | | | 9000 40000 | 10100 45000 | |
| 1304 | 0.7874 20.000 | 2.0472 52.000 | 2.0482 52.024 | 0.5906 15.000 | 5950 | 5150 | | | 6350 28100 | 5600 24900 | | | | |
| 7304 | 0.7874 20.000 | 2.0472 52.000 | 2.0482 52.024 | 0.7087 18.000 | | | | | | | | | | |
| 5304 | 0.7874 20.000 | 2.0472 52.000 | 2.0482 52.024 | 0.8750 22.225 | | | | | | | | | | |
| 1205 | 0.9843 25.000 | 2.0472 52.000 | 2.0482 52.024 | 0.5906 15.000 | 5700 25400 | 5750 25600 | 5700 25400 | 5750 25600 | 6300 28100 | 6600 29300 | | 7200 32000 | 7800 35000 | |
| 5205 | 0.9843 25.000 | 2.0472 52.000 | 2.0482 52.024 | 0.8125 20.638 | | | | | 8600 38500 | 9750 43500 | | 9800 43500 | 11600 51500 | |
| 1305 | 0.9843 25.000 | 2.4409 62.000 | 2.4421 62.029 | 0.6693 17.000 | 8000 31000 | 7000 35500 | 8000 31000 | 7000 38000 | 8550 34000 | 7650 | | 9600 42500 | 8900 39500 | |
| 7305 | 0.9843 25.000 | 2.4409 62.000 | 2.4421 62.029 | 0.8268 21.000 | | | | | 11300 50500 | 11000 49000 | | | | |
| 5305 | 0.9843 25.000 | 2.4409 62.000 | 2.4421 62.029 | 1.0000 25.400 | 12900 57000 | 12900 57500 | | | 13700 61000 | 14100 62500 | | | | |
| 1006 | 1.1811 30.000 | 2.1654 55.000 | 2.1665 55.029 | 0.5118 13.000 | | | | | | | | | | |
| 1206 | 1.1811 30.000 | 2.4409 62.000 | 2.4421 62.029 | 0.6299 16.000 | 7900 35000 | 7900 35000 | 7900 35000 | 7900 35000 | 8300 37000 | 8450 37500 | | 9550 42500 | 10100 45000 | |
| 5206 | 1.1811 30.000 | 2.4409 62.000 | 2.4421 62.029 | 0.9375 23.812 | | | | | 12400 55500 | 14200 63000 | | 14300 63500 | 17100 76000 | |
| 1306 | 1.1811 30.000 | 2.8346 72.000 | 2.8359 72.032 | 0.7480 19.000 | 10500 47000 | 10200 45500 | 10500 47000 | 10200 45500 | 11100 49500 | 11000 49000 | | 12300 54500 | 12600 56000 | |
| 7306 | 1.1811 30.000 | 2.8346 72.000 | 2.8359 72.032 | 0.9055 23.000 | | | | | 14600 65000 | 15600 69500 | | | | |
| 5306 | 1.1811 30.000 | 2.8346 72.000 | 2.8359 72.032 | 1.1875 23.000 | | | | | 17800 79000 | 20100 89500 | | 19600 87500 | 23000 102000 | |
| 1007 | 1.3780 35.000 | 2.4409 62.000 | 2.4421 62.029 | 0.5512 14.000 | | | | | | | | | | |

* Oversize outer ring for heavy press fit in standard housing bore.

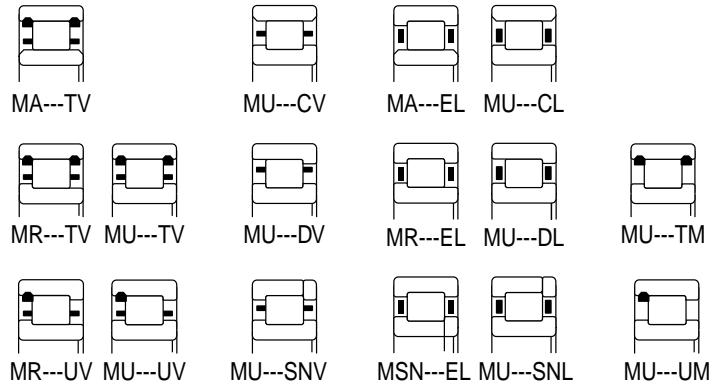
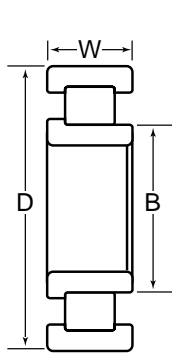
Dimensions and Ratings



| Basic Bearing Number | A | C | F | H | R | r | U | V | X | Z | Basic Bearing Number |
|----------------------|-----------------|-----------------|---------------------|---------------------|-------------------------|---------------|---------------------------------|--------------|-----------------------------------|--------------|----------------------|
| | Inner Ring O.D. | Outer Ring I.D. | Inner Ring Rib O.D. | Outer Ring Rib O.D. | Maximum * Fillet Radius | | Minimum Shaft Shoulder Diameter | | Maximum Housing Shoulder Diameter | | |
| | | | | | Shaft | Housing | Plain Rings | Rib Rings | Plain Rings | Rib Rings | |
| Inch/mm | | | | | | | | | | | |
| 1203 | | | | | | | | | | | 1203 |
| 1204 | 1.108 28.14 | 1.608 40.84 | 1.193 30.30 | 1.523 38.68 | 0.040 1.02 | 0.040 1.02 | 1.02 25.9 | 1.10 27.9 | 1.68 42.7 | 1.60 40.6 | 1204 |
| 5204 | 1.108 28.14 | 1.608 40.84 | 1.193 30.30 | 1.523 38.68 | 0.040 1.02 | 0.040 1.02 | 1.02 25.9 | 1.10 27.9 | 1.68 42.7 | 1.60 40.6 | 5204 |
| 1304 | 1.101 27.97 | 1.731 43.97 | 1.211 30.76 | 1.629 41.38 | 0.040 1.02 | 0.040 1.02 | 1.02 25.9 | 1.10 27.9 | 1.82 46.2 | 1.73 43.9 | 1304 |
| 7304 | 1.101 27.97 | 1.731 43.97 | 1.211 30.76 | 1.629 41.38 | 0.040 1.02 | 0.040 1.02 | 1.02 25.9 | 1.10 27.9 | 1.82 46.2 | 1.73 43.9 | 7304 |
| 5304 | 1.101 27.97 | 1.731 43.97 | 1.211 30.76 | 1.629 41.38 | 0.040 1.02 | 0.040 1.02 | 1.02 25.9 | 1.10 27.9 | 1.82 46.2 | 1.73 43.9 | 5304 |
| 1205 | 1.266 32.16 | 1.766 44.86 | 1.351 34.32 | 1.691 42.95 | 0.040 1.02 | 0.040 1.02 | 1.20 30.5 | 1.26 32.0 | 1.85 47.0 | 1.76 44.7 | 1205 |
| 5205 | 1.266 32.16 | 1.766 44.86 | 1.351 34.32 | 1.691 42.95 | 0.040 1.02 | 0.040 1.02 | 1.20 30.5 | 1.26 32.0 | 1.85 47.0 | 1.76 44.7 | 5205 |
| 1305 | 1.338 33.99 | 2.103 53.42 | 1.476 37.49 | 1.974 50.14 | 0.040 1.02 | 0.040 1.02 | 1.24 31.5 | 1.33 33.8 | 2.20 55.9 | 2.10 53.3 | 1305 |
| 7305 | 1.338 33.99 | 2.103 53.42 | 1.476 37.49 | 1.974 50.14 | 0.040 1.02 | 0.040 1.02 | 1.24 31.5 | 1.33 33.8 | 2.20 55.9 | 2.10 53.3 | 7305 |
| 5305 | 1.338 33.99 | 2.103 53.42 | 1.476 37.49 | 1.974 50.14 | 0.040 1.02 | 0.040 1.02 | 1.24 31.5 | 1.33 33.8 | 2.20 55.9 | 2.10 53.3 | 5305 |
| 1006 | 1.451 36.86 | 1.909 48.49 | 1.551 39.40 | 1.810 45.97 | 0.040 1.02 | 0.040 1.02 | 1.38 35.1 | 1.45 36.8 | 1.98 50.3 | 1.90 48.3 | 1006 |
| 1206 | 1.499 38.07 | 2.129 54.08 | 1.609 40.87 | 2.027 51.49 | 0.040 1.02 | 0.040 1.02 | 1.42 36.1 | 1.49 37.8 | 2.22 56.4 | 2.12 53.8 | 1206 |
| 5206 | 1.499 38.07 | 2.129 54.08 | 1.609 40.87 | 2.027 51.49 | 0.040 1.02 | 0.040 1.02 | 1.42 36.1 | 1.49 37.8 | 2.22 56.4 | 2.12 53.8 | 5206 |
| 1306 | 1.602 40.69 | 2.378 60.40 | 1.742 44.25 | 2.239 56.87 | 0.060 1.52 | 0.040 1.02 | 1.49 37.8 | 1.60 40.6 | 2.52 64.0 | 2.37 60.2 | 1306 |
| 7306 | 1.602 40.69 | 2.378 60.40 | 1.742 44.25 | 2.239 56.87 | 0.060 1.52 | 0.040 1.02 | 1.49 37.8 | 1.60 40.6 | 2.52 64.0 | 2.37 60.2 | 7306 |
| 5306 | 1.602 40.69 | 2.378 60.40 | 1.742 44.25 | 2.239 56.87 | 0.060 1.52 | 0.040 1.02 | 1.49 37.8 | 1.60 40.6 | 2.52 64.0 | 2.37 60.2 | 5306 |
| 1007 | 1.660 42.16 | 2.160 54.86 | 1.760 44.70 | 2.060 52.32 | 0.040 1.02 | 0.040 1.02 | 1.59 40.4 | 1.66 42.2 | 2.24 56.9 | 2.16 54.9 | 1007 |

* The maximum fillet on the shaft or in the housing that the bearing corner will clear.

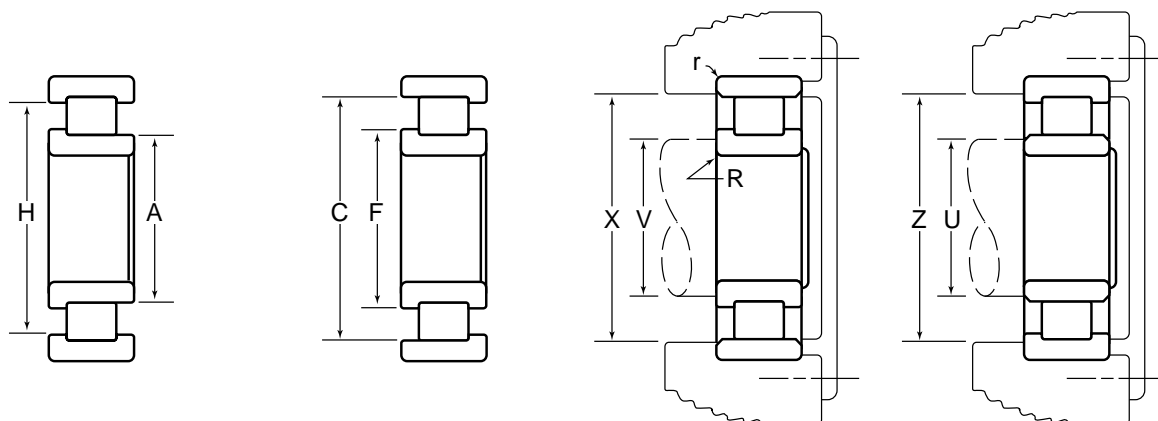
Cylindrical Roller Bearings



| Basic Bearing Number | B | D | | W | Radial Load Ratings — lbs./N | | | | | | | | | | | |
|----------------------|------------------|-------------------|-------------------|------------------|------------------------------|----------------|-----------------------|----------------|----------------------|------------------|------------------|-----------------|---------------------------|-----------------|---------|--------|
| | | Outside Diameter | | | One Piece Steel Cage | | | | Composite Steel Cage | | X Bar Steel Cage | | Full Complement (No Cage) | | | |
| | Bore Diameter | Standard Style | "A" * Style | Width | Outer Ring Assemblies | | Inner Ring Assemblies | | Dynamic | Static | Dynamic | Static | Dynamic | Static | Dynamic | Static |
| | | Inch/mm | | | Dynamic | Static | Dynamic | Static | | | | | | | | |
| 1207 | 1.3780 35.000 | 2.8346 72.000 | 2.8359 72.032 | 0.6693 17.000 | 9050 40500 | 8900 39500 | 9050 40500 | 8900 39500 | 9550 42500 | 9550 42500 | 9550 42500 | 9550 42500 | 10900 48500 | 11400 51000 | | |
| 5207 | 1.3780 35.000 | 2.8346 72.000 | 2.8359 72.032 | 1.0625 26.988 | | | | | 15600 69000 | 17900 79500 | 15600 69000 | 17900 79500 | 17800 79500 | 21400 95500 | | |
| 1307 | 1.3780 35.000 | 3.1496 80.000 | 3.1510 80.035 | 0.8268 21.000 | 13200 59000 | 13500 60000 | 14000 62000 | 14600 65000 | 14000 62000 | 14600 65000 | 14000 62000 | 14600 65000 | 16200 72000 | 17700 78500 | | |
| 7307 | 1.3780 35.000 | 3.1496 80.000 | 3.1510 80.035 | 1.0236 26.000 | | | | | | | | | | | | |
| 5307 | 1.3780 35.000 | 3.1496 80.000 | 3.1510 80.035 | 1.3750 34.925 | | | | | 20800 92500 | 24300 108000 | | | 24000 107000 | 29500 131000 | | |
| 1008 | 1.5748 40.000 | 2.6772 68.000 | 2.6785 68.034 | 0.5906 15.000 | | | | | | | | | | | | |
| 1208 | 1.5748 40.000 | 3.1496 80.000 | 3.1510 80.035 | 0.7087 18.000 | | | 10800 48000 | 11000 49000 | 11300 505000 | 11700 52000 | 11300 50500 | 11700 52000 | 12900 57000 | 13900 62000 | | |
| 5208 | 1.5748 40.000 | 3.1496 80.000 | 3.1510 80.035 | 1.1875 30.162 | | | | | 19600 87000 | 23800 106000 | 19600 87000 | 23800 106000 | 22300 99000 | 28300 126000 | | |
| 1308 | 1.5748 40.000 | 3.5433 90.000 | 3.5449 90.040 | 0.9055 23.000 | 16700 74000 | 16800 74500 | 16700 74000 | 16800 74500 | 17600 78500 | 18100 80500 | 16700 74000 | 16800 74500 | 19500 86500 | 20600 92000 | | |
| 7308 | 1.5748 40.000 | 3.5433 90.000 | 3.5449 90.040 | 1.1811 30.000 | | | | | 24700 110000 | 27800 1240000 | | | | | | |
| 5308 | 1.5748 40.000 | 3.5433 90.000 | 3.5449 90.040 | 1.4375 36.512 | | | | | 27800 124000 | 32500 145000 | 26300 117000 | 30000 134000 | | | | |
| 1009 | 1.7717 45.000 | 2.9528 75.000 | 2.9542 75.037 | 0.6299 16.000 | | | | | | | | | | | | |
| 1209 | 1.7717 45.000 | 3.3465 85.000 | 3.3480 85.039 | 0.7480 19.000 | 11900 53000 | 13000 57500 | 12500 55500 | 13800 61500 | 13000 58000 | 14600 65000 | | | 14600 65000 | 17000 76000 | | |
| 5209 | 1.7717 45.000 | 3.3465 85.000 | 3.3480 85.039 | 1.1875 30.162 | | | | | 21200 94500 | 27300 122000 | | | | | | |
| 1309 | 1.7717 45.000 | 3.9370 100.000 | 3.9388 100.046 | 0.9843 25.000 | 19600 87000 | 20500 91000 | 20700 92000 | 22000 98000 | 21800 97000 | 23600 105000 | 20700 92000 | 22000 98000 | 23900 106000 | 26800 119000 | | |
| 7309 | 1.7717 45.000 | 3.9370 100.000 | 3.9388 100.046 | 1.2205 31.000 | | | | | 27700 123000 | 32000 143000 | 263000 117000 | 30000 133000 | 30500 135000 | 36500 162000 | | |
| 5309 | 1.7717 45.000 | 3.9370 100.000 | 3.9388 100.046 | 1.5625 39.688 | | | | | | | | | | | | |
| 1010 | 1.9685 50.000 | 3.1496 80.000 | 3.1510 80.035 | 0.6299 16.000 | | | 8600 38000 | 10600 47000 | 8600 38000 | 10600 47000 | | | | | | |

* Oversize outer ring for heavy press fit in standard housing bore.

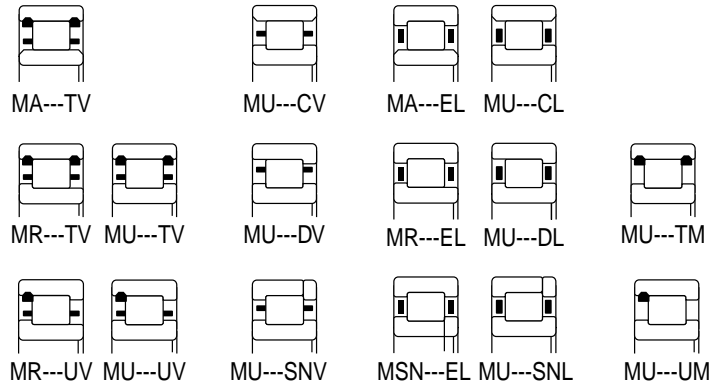
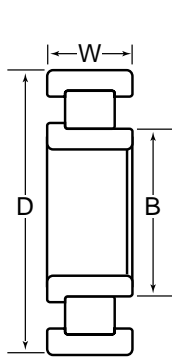
Dimensions and Ratings



| Basic Bearing Number | A | C | F | H | R | r | U | V | X | Z | Basic Bearing Number |
|----------------------|-----------------|-----------------|---------------------|---------------------|-------------------------|---------------|---------------------------------|--------------|-----------------------------------|--------------|----------------------|
| | Inner Ring O.D. | Outer Ring I.D. | Inner Ring Rib O.D. | Outer Ring Rib O.D. | Maximum * Fillet Radius | | Minimum Shaft Shoulder Diameter | | Maximum Housing Shoulder Diameter | | |
| | | | | | Shaft | Housing | Plain Rings | Rib Rings | Plain Rings | Rib Rings | |
| | | | | | | | | | | | |
| 1207 | 1.731 43.97 | 2.460 62.48 | 1.862 47.29 | 2.343 59.51 | 0.040 1.02 | 0.040 1.02 | 1.64 41.7 | 1.73 43.9 | 2.57 65.3 | 2.46 62.5 | 1207 |
| 5207 | 1.731 43.97 | 2.460 62.48 | 1.862 47.29 | 2.343 59.51 | 0.040 1.02 | 0.040 1.02 | 1.64 41.7 | 1.73 43.9 | 2.57 65.3 | 2.46 62.5 | 5207 |
| 1307 | 1.844 46.84 | 2.675 67.94 | 1.995 50.67 | 2.538 64.47 | 0.060 1.52 | 0.060 1.52 | 1.72 43.7 | 1.84 46.7 | 2.81 71.4 | 2.67 67.8 | 1307 |
| 7307 | 1.844 46.84 | 2.675 67.94 | 1.995 50.67 | 2.538 64.47 | 0.060 1.52 | 0.060 1.52 | 1.72 43.7 | 1.84 46.7 | 2.81 71.4 | 2.67 67.8 | 7307 |
| 5307 | 1.844 46.84 | 2.675 67.94 | 1.995 50.67 | 2.538 64.47 | 0.060 1.52 | 0.060 1.52 | 1.72 43.7 | 1.84 46.7 | 2.81 71.4 | 2.67 67.8 | 5307 |
| 1008 | 1.877 47.68 | 2.377 60.38 | 1.976 50.19 | 2.276 57.81 | 0.040 1.02 | 0.040 1.02 | 1.80 45.7 | 1.87 47.5 | 2.47 62.7 | 2.37 60.2 | 1008 |
| 1208 | 1.966 49.94 | 2.741 69.62 | 2.104 53.44 | 2.615 66.42 | 0.060 1.52 | 0.040 1.02 | 1.86 47.2 | 1.96 49.8 | 2.87 72.9 | 2.74 69.6 | 1208 |
| 5208 | 1.966 49.94 | 2.741 69.62 | 2.104 53.44 | 2.615 66.42 | 0.060 1.52 | 0.040 1.02 | 1.86 47.2 | 1.96 49.8 | 2.87 72.9 | 2.74 69.6 | 5208 |
| 1308 | 2.059 52.30 | 3.058 77.67 | 2.244 57.00 | 2.887 73.33 | 0.060 1.52 | 0.060 1.52 | 1.93 49.0 | 2.05 52.1 | 3.20 81.3 | 3.05 77.5 | 1308 |
| 7308 | 2.059 52.30 | 3.058 77.67 | 2.244 57.00 | 2.887 73.33 | 0.060 1.52 | 0.060 1.52 | 1.93 49.0 | 2.05 52.1 | 3.20 81.3 | 3.05 77.5 | 7308 |
| 5308 | 2.059 52.30 | 3.058 77.67 | 2.244 57.00 | 2.887 73.33 | 0.060 1.52 | 0.060 1.52 | 1.93 49.0 | 2.05 52.1 | 3.20 81.3 | 3.05 77.5 | 5308 |
| 1009 | 2.082 52.88 | 2.644 67.16 | 2.182 55.42 | 2.544 64.62 | 0.040 1.02 | 0.040 1.02 | 2.00 50.8 | 2.08 52.8 | 2.73 69.3 | 2.64 67.1 | 1009 |
| 1209 | 2.186 55.52 | 2.952 74.98 | 2.324 59.03 | 2.827 71.81 | 0.060 1.52 | 0.040 1.02 | 2.08 52.8 | 2.18 55.4 | 3.08 78.2 | 2.95 74.9 | 1209 |
| 5209 | 2.186 55.52 | 2.952 74.98 | 2.324 59.03 | 2.827 71.81 | 0.060 1.52 | 0.040 1.02 | 2.08 52.8 | 2.18 55.4 | 3.08 78.2 | 2.95 74.9 | 5209 |
| 1309 | 2.337 59.36 | 3.390 86.11 | 2.532 64.31 | 3.208 81.48 | 0.080 2.03 | 0.060 1.52 | 2.20 55.9 | 2.33 59.2 | 3.56 90.4 | 3.39 86.1 | 1309 |
| 7309 | 2.337 59.36 | 3.390 86.11 | 2.532 64.31 | 3.208 81.48 | 0.080 2.03 | 0.060 1.52 | 2.20 55.9 | 2.33 59.2 | 3.56 90.4 | 3.39 86.1 | 7309 |
| 5309 | 2.337 59.36 | 3.390 86.11 | 2.532 64.31 | 3.208 81.48 | 0.080 2.03 | 0.060 1.52 | 2.20 55.9 | 2.33 59.2 | 3.56 90.4 | 3.39 86.1 | 5309 |
| 1010 | 2.279 57.89 | 2.841 72.16 | 2.379 60.43 | 2.741 69.62 | 0.060 1.52 | 0.040 1.02 | 2.21 56.1 | 2.27 57.7 | 2.93 74.4 | 2.84 72.1 | 1010 |

* The maximum fillet on the shaft or in the housing that the bearing corner will clear.

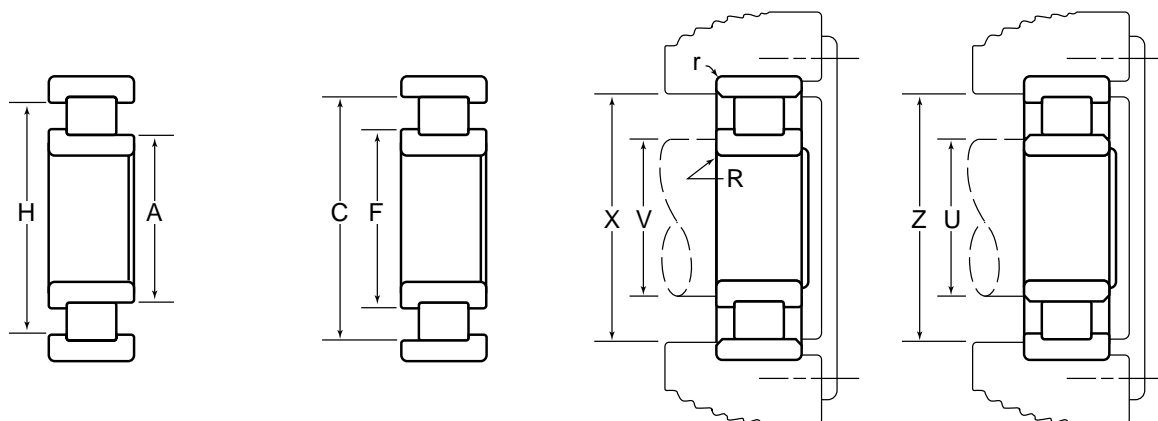
Cylindrical Roller Bearings



| Basic Bearing Number | B | | D | | W | Radial Load Ratings — lbs./N | | | | | | | | | |
|----------------------|------------------|-------------------|-------------------|------------------|-----------------------|------------------------------|-----------------------|-----------------|----------------------|-----------------|------------------|-----------------|---------------------------|-----------------|----------------|
| | Bore Diameter | Outside Diameter | | Width | One Piece Steel Cage | | | | Composite Steel Cage | | X Bar Steel Cage | | Full Complement (No Cage) | | |
| | | Standard Style | "A" * Style | | Outer Ring Assemblies | | Inner Ring Assemblies | | Dynamic | Static | Dynamic | Static | Dynamic | Static | Dynamic |
| | Inch/mm | | | | | Dynamic | Static | Dynamic | Static | Dynamic | Static | Dynamic | Static | Dynamic | Static |
| 1210 | 1.9685 50.000 | 3.5433 90.000 | 3.5449 90.040 | 1.7874 20.000 | | | | | | 13200 58500 | 15300 68000 | 13200 58500 | 15300 68000 | 15200 67500 | 18600 82500 |
| 5210 | 1.9685 50.000 | 3.5433 90.000 | 3.5449 90.040 | 1.1875 30.162 | | | 19400 86500 | 25100 112000 | 21100 94000 | 28100 125000 | 21100 94000 | 28100 125000 | | | |
| 1310 | 1.9685 50.000 | 4.3307 110.000 | 4.3329 110.056 | 1.0630 27.000 | | | 24500 109000 | 26500 118000 | 24500 109000 | 26500 118000 | 24500 109000 | 26500 118000 | 28400 126000 | 32000 143000 | |
| 7310 | 1.9685 50.000 | 4.3307 110.000 | 4.3329 110.056 | 1.2992 33.000 | | | | | | 37500 167000 | 46000 204000 | | | | |
| 5310 | 1.9685 50.000 | 4.3307 110.000 | 4.3329 110.056 | 1.7500 44.450 | | | | | | | | | | | |
| 1911 | 2.1654 55.000 | 3.1496 80.000 | 3.1510 80.035 | 0.5118 13.000 | | | | | | | | | | | |
| 1011 | 2.1654 55.000 | 3.5433 90.000 | 3.5449 90.040 | 0.7087 18.000 | | | | | 10700 47500 | 13300 59500 | | | | | |
| 1211 | 2.1654 55.000 | 3.9370 100.000 | 3.9388 100.046 | 0.8268 21.000 | | | | | 15800 70500 | 18600 83000 | 15800 70500 | 18600 83000 | 18200 81000 | 22600 100000 | |
| 5211 | 2.1654 55.000 | 3.9370 100.000 | 3.9388 100.046 | 1.3125 33.338 | | | | | 25700 114000 | 35000 155000 | 25700 114000 | 35000 155000 | | | |
| 1311 | 2.1654 55.000 | 4.7244 120.000 | 4.7266 120.056 | 1.1417 29.000 | 253000 113000 | 26600 118000 | 26800 119000 | 28600 127000 | 28200 126000 | 30500 137000 | | | 31000 138000 | 35000 155000 | |
| 7311 | 2.1654 55.000 | 4.7244 120.000 | 4.7266 120.056 | 1.4173 36.000 | | | | | 38500 170000 | 45500 202000 | | | | | |
| 5311 | 2.1654 55.000 | 4.7244 120.000 | 4.7266 120.056 | 1.9375 49.212 | | | | | 49000 218000 | 62500 277000 | | | | | |
| 1912 | 2.3622 60.000 | 3.3465 85.000 | 3.3480 85.039 | 0.5118 13.000 | | | | | | | | | | | |
| 1012 | 2.3622 60.000 | 3.7402 95.000 | 3.7419 95.044 | 0.7087 18.000 | | | 11300 50000 | 14700 65000 | 11300 50000 | 14700 65000 | | | | | |
| 1212 | 2.3622 60.000 | 4.3307 110.000 | 4.3329 110.056 | 0.8661 22.000 | | | 19300 86000 | 21900 97500 | 19300 86000 | 21900 97500 | | | | | |
| 5212 | 2.3622 60.000 | 4.3307 110.000 | 4.3329 110.056 | 1.4375 36.512 | | | | | 33500 148000 | 44000 196000 | | | | | |
| 1312 | 2.3622 60.000 | 5.1181 130.000 | 5.1204 130.058 | 1.2205 31.000 | | | 32500 144000 | 35500 158000 | 34000 152000 | 38000 169000 | | | 37500 167000 | 43000 192000 | |
| 7312 | 2.3622 60.000 | 5.1181 130.000 | 5.1204 130.058 | 1.4961 38.000 | | | | | | | | | | | |

* Oversize outer ring for heavy press fit in standard housing bore.

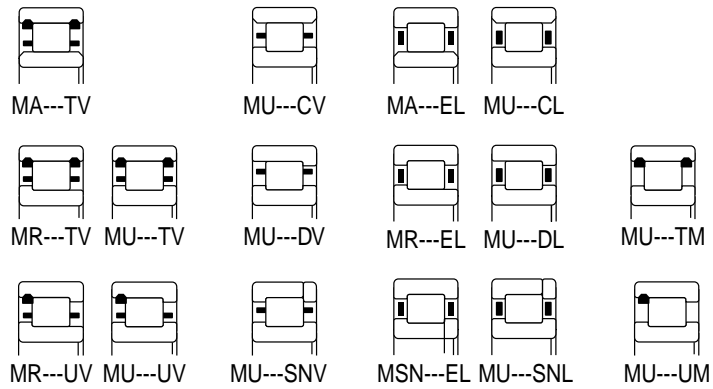
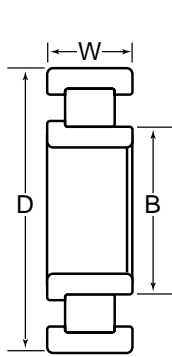
Dimensions and Ratings



| Basic Bearing Number | A | C | F | H | R | r | U | V | X | Z | Basic Bearing Number |
|----------------------|-----------------|-----------------|---------------------|---------------------|-------------------------|---------------|---------------------------------|--------------|-----------------------------------|---------------|----------------------|
| | Inner Ring O.D. | Outer Ring I.D. | Inner Ring Rib O.D. | Outer Ring Rib O.D. | Maximum * Fillet Radius | | Minimum Shaft Shoulder Diameter | | Maximum Housing Shoulder Diameter | | |
| | | | | | Shaft | Housing | Plain Rings | Rib Rings | Plain Rings | Rib Rings | |
| | | | | | | | | | | | |
| 1210 | 2.380 60.45 | 3.132 79.55 | 2.518 63.96 | 3.018 76.66 | 0.060 1.52 | 0.040 1.02 | 2.27 57.7 | 2.38 60.5 | 3.26 82.8 | 3.13 79.5 | 1210 |
| 5210 | 2.380 60.45 | 3.132 79.55 | 2.518 63.96 | 3.018 76.66 | 0.060 1.52 | 0.040 1.02 | 2.27 57.7 | 2.38 60.5 | 3.26 82.8 | 3.13 79.5 | 5210 |
| 1310 | 2.565 65.15 | 3.720 94.49 | 2.781 70.64 | 3.518 89.36 | 0.080 2.03 | 0.080 2.03 | 2.40 61.0 | 2.56 65.0 | 3.90 99.1 | 3.72 94.5 | 1310 |
| 7310 | 2.565 65.15 | 3.720 94.49 | 2.781 70.64 | 3.518 89.36 | 0.080 2.03 | 0.080 2.03 | 2.40 61.0 | 2.56 65.0 | 3.90 99.1 | 3.72 94.5 | 7310 |
| 5310 | 2.565 65.15 | 3.720 94.49 | 2.781 70.64 | 3.518 89.36 | 0.080 2.03 | 0.080 2.03 | 2.40 61.0 | 2.56 65.0 | 3.90 99.1 | 3.72 94.5 | 5310 |
| 1911 | 2.430 61.72 | 2.889 73.38 | 2.530 64.26 | 2.789 70.84 | 0.040 1.02 | 0.040 1.02 | 2.36 59.9 | 2.43 61.7 | 2.96 75.2 | 2.88 73.2 | 1911 |
| 1011 | 2.539 64.49 | 3.171 80.54 | 2.665 67.69 | 3.045 77.34 | 0.060 1.52 | 0.040 1.02 | 2.44 62.0 | 2.53 64.3 | 3.29 83.6 | 3.17 80.5 | 1011 |
| 1211 | 2.634 66.90 | 3.465 88.01 | 2.785 70.74 | 3.328 84.53 | 0.080 2.03 | 0.060 1.52 | 2.52 64.0 | 2.63 66.8 | 3.60 91.4 | 3.46 87.9 | 1211 |
| 5211 | 2.634 66.90 | 3.465 88.01 | 2.785 70.74 | 3.328 84.53 | 0.080 2.03 | 0.060 1.52 | 2.52 64.0 | 2.63 66.8 | 3.60 91.4 | 3.46 87.9 | 5211 |
| 1311 | 2.812 71.42 | 4.079 103.61 | 3.045 77.34 | 3.860 98.04 | 0.080 2.03 | 0.080 2.03 | 2.62 66.5 | 2.81 71.4 | 4.28 108.7 | 4.07 103.4 | 1311 |
| 7311 | 2.812 71.42 | 4.079 103.61 | 3.045 77.34 | 3.860 98.04 | 0.080 2.03 | 0.080 2.03 | 2.62 66.5 | 2.81 71.4 | 4.28 108.7 | 4.07 103.4 | 7311 |
| 5311 | 2.812 71.42 | 4.079 103.61 | 3.045 77.34 | 3.860 98.04 | 0.080 2.03 | 0.080 2.03 | 2.62 66.5 | 2.81 71.4 | 4.28 108.7 | 4.07 103.4 | 5311 |
| 1912 | 2.630 66.80 | 3.089 78.46 | 2.730 69.34 | 2.989 75.92 | 0.040 1.02 | 0.040 1.02 | 2.56 65.0 | 2.63 66.8 | 3.16 80.3 | 3.08 78.2 | 1912 |
| 1012 | 2.736 69.49 | 3.368 85.55 | 2.862 72.69 | 3.242 82.35 | 0.060 1.52 | 0.040 1.02 | 2.64 67.1 | 2.73 69.3 | 3.49 88.6 | 3.36 85.3 | 1012 |
| 1212 | 2.850 72.39 | 3.849 97.76 | 3.029 76.94 | 3.681 93.50 | 0.080 2.03 | 0.060 1.52 | 2.73 69.3 | 2.85 72.4 | 3.99 101.3 | 3.84 97.5 | 1212 |
| 5212 | 2.850 72.39 | 3.849 97.76 | 3.029 76.94 | 3.681 93.50 | 0.080 2.03 | 0.060 1.52 | 2.73 69.3 | 2.85 72.4 | 3.99 101.3 | 3.84 97.5 | 5212 |
| 1312 | 3.053 77.55 | 4.429 112.50 | 3.308 84.02 | 4.187 106.35 | 0.100 2.54 | 0.080 2.03 | 2.87 72.9 | 3.05 77.5 | 4.64 117.9 | 4.42 112.3 | 1312 |
| 7312 | 3.053 77.55 | 4.429 112.50 | 3.308 84.02 | 4.187 106.35 | 0.100 2.54 | 0.080 2.03 | 2.87 72.9 | 3.05 77.5 | 4.64 117.9 | 4.42 112.3 | 7312 |

* The maximum fillet on the shaft or in the housing that the bearing corner will clear.

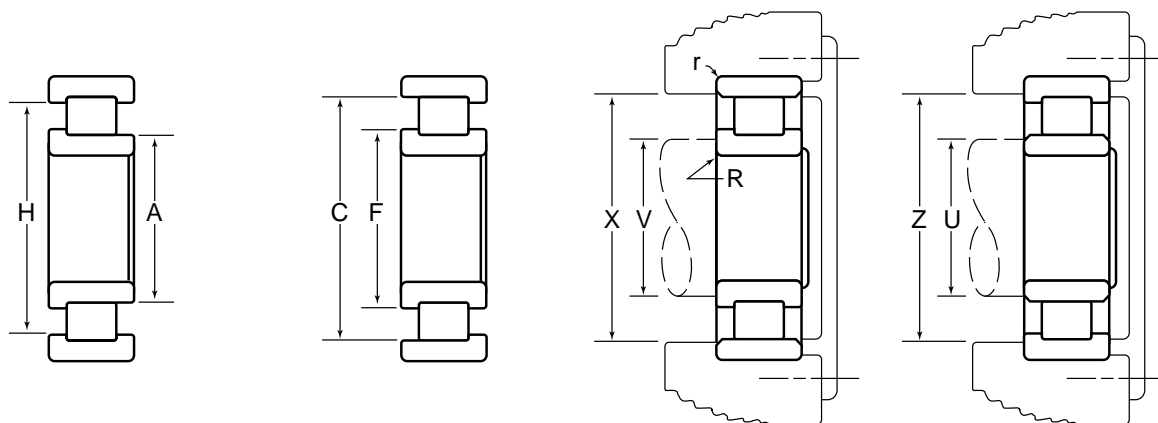
Cylindrical Roller Bearings



| Basic Bearing Number | B | | D | | W | Radial Load Ratings — lbs./N | | | | | | | | | |
|----------------------|------------------|-------------------|-------------------|------------------|-----------------------|------------------------------|-----------------------|-----------------|----------------------|-----------------|------------------|-----------------|---------------------------|-----------------|-----------------|
| | Bore Diameter | Outside Diameter | | Width | One Piece Steel Cage | | | | Composite Steel Cage | | X Bar Steel Cage | | Full Complement (No Cage) | | |
| | | Standard Style | "A" * Style | | Outer Ring Assemblies | | Inner Ring Assemblies | | Dynamic | Static | Dynamic | Static | Dynamic | Static | Dynamic |
| | Inch/mm | | | | | Dynamic | Static | Dynamic | Static | Dynamic | Static | Dynamic | Static | Dynamic | Static |
| 5312 | 2.3622 60.000 | 5.1181 130.000 | 5.1204 130.058 | 2.1250 53.975 | | | | | | 60000 266000 | 78000 350000 | | | | |
| 1913 | 2.5591 65.000 | 3.5433 90.000 | 3.5449 90.040 | 0.5118 13.000 | | | | | | | | | | | |
| 1013 | 2.5591 65.000 | 3.9370 100.000 | 3.9388 100.046 | 0.7087 18.000 | | | 10900 48500 | 14300 63500 | | 11900 53000 | 16000 71000 | | | | |
| 1213 | 2.5591 65.000 | 4.7244 120.000 | 4.7266 120.056 | 0.9055 23.000 | | | | | | 21800 97000 | 26300 117000 | 21800 97000 | 26300 117000 | | |
| 5213 | 2.5591 65.000 | 4.7244 120.000 | 4.7266 120.056 | 1.5000 38.100 | | | | | | 34500 153000 | 47500 211000 | 34500 153000 | 47500 211000 | | |
| 1313 | 2.5591 65.000 | 5.5118 140.000 | 5.5141 140.058 | 1.2992 33.000 | | | 38000 170000 | 42500 189000 | | 38000 170000 | 42500 189000 | 38000 170000 | 42500 189000 | 44000 196000 | 51500 230000 |
| 7313 | 2.5591 65.000 | 5.5118 140.000 | 5.5141 140.058 | 1.5748 40.000 | | | | | | 48500 215000 | 57500 256000 | | | | |
| 5313 | 2.5591 65.000 | 5.5118 140.000 | 5.5141 140.058 | 2.3125 58.738 | | | | | | 67500 300000 | 88500 395000 | | | | |
| 1914 | 2.7559 70.000 | 3.9370 100.000 | 3.9388 100.046 | 0.6299 16.000 | | | | | | | | | | | |
| 1014 | 2.7559 70.000 | 4.3307 110.000 | 4.3329 110.056 | 0.7874 20.000 | | | | | | 14300 63500 | 18000 80000 | | | | |
| 1214 | 2.7559 70.000 | 4.9213 125.000 | 4.9236 125.059 | 0.9449 24.000 | | | | | | 23200 103000 | 27800 124000 | 23200 103000 | 27800 124000 | | |
| 5214 | 2.7559 70.000 | 4.9213 125.000 | 4.9236 125.059 | 1.5625 39.688 | | | | | | 38000 170000 | 53000 235000 | | | | |
| 1314 | 2.7559 70.000 | 5.9055 150.000 | 5.9081 150.066 | 1.3780 35.000 | | | 43000 191000 | 48500 215000 | | 43000 191000 | 48500 215000 | 43000 191000 | 48500 215000 | 49500 221000 | 58500 261000 |
| 7314 | 2.7559 70.000 | 5.9055 150.000 | 5.9081 150.066 | 1.6929 43.000 | | | | | | 54500 242000 | 65500 291000 | | | | |
| 5314 | 2.7559 70.000 | 5.9055 150.000 | 5.9081 150.066 | 2.5000 63.500 | | | | | | | | | | | |
| 1915 | 2.9528 75.000 | 4.1339 105.000 | 4.1358 105.049 | 0.6299 16.000 | | | | | | | | | | | |
| 1015 | 2.9528 75.000 | 4.5276 115.000 | 4.5298 115.057 | 0.7874 20.000 | | | 14600 65000 | 18900 84000 | | 14600 65000 | 18900 84000 | | | | |
| 1215 | 2.9528 75.000 | 5.1181 130.000 | 5.1204 130.058 | 0.9843 25.000 | 24000 107000 | 29500 131000 | | | | 25000 111000 | 31000 138000 | | | 28700 127000 | 37500 166000 |

* Oversize outer ring for heavy press fit in standard housing bore.

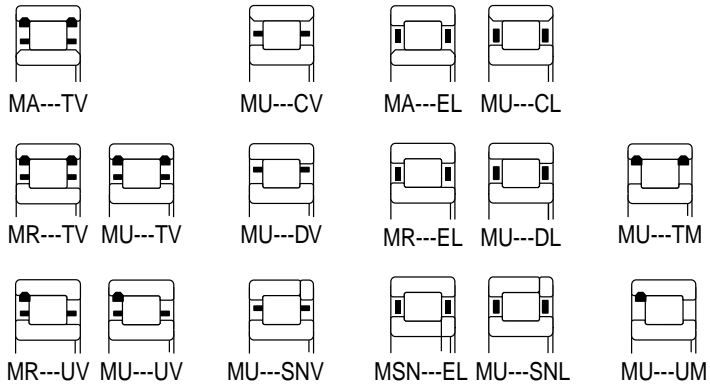
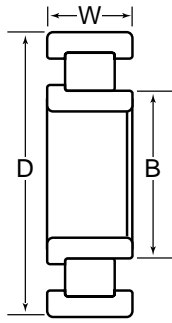
Dimensions and Ratings



| Basic Bearing Number | A | C | F | H | R | r | U | V | X | Z | Basic Bearing Number |
|----------------------|-----------------|-----------------|---------------------|---------------------|-------------------------|---------------|---------------------------------|--------------|-----------------------------------|---------------|----------------------|
| | Inner Ring O.D. | Outer Ring I.D. | Inner Ring Rib O.D. | Outer Ring Rib O.D. | Maximum * Fillet Radius | | Minimum Shaft Shoulder Diameter | | Maximum Housing Shoulder Diameter | | |
| | | | | | Shaft | Housing | Plain Rings | Rib Rings | Plain Rings | Rib Rings | |
| Inch/mm | | | | | | | | | | | |
| 5312 | 3.053 77.55 | 4.429 112.50 | 3.308 84.02 | 4.187 106.35 | 0.100 2.54 | 0.080 2.03 | 2.87 72.9 | 3.05 77.5 | 4.64 117.9 | 4.42 112.3 | 5312 |
| 1913 | 2.875 71.76 | 3.284 83.41 | 2.925 74.30 | 3.184 80.87 | 0.040 1.02 | 0.040 1.02 | 2.76 70.1 | 2.82 71.6 | 3.36 85.3 | 3.28 83.3 | 1913 |
| 1013 | 2.933 74.50 | 3.565 90.55 | 3.060 77.72 | 3.439 87.35 | 0.060 1.52 | 0.040 1.02 | 2.84 72.1 | 2.93 74.4 | 3.69 93.7 | 3.56 90.4 | 1013 |
| 1213 | 3.166 80.42 | 4.166 105.82 | 3.360 85.34 | 3.986 101.24 | 0.100 2.54 | 0.060 1.52 | 3.03 77.0 | 3.16 80.3 | 4.33 110.0 | 4.16 105.7 | 1213 |
| 5213 | 3.166 80.42 | 4.166 105.82 | 3.360 85.34 | 3.986 101.24 | 0.100 2.54 | 0.060 1.52 | 3.03 77.0 | 3.16 80.3 | 4.33 110.0 | 4.16 105.7 | 5213 |
| 1313 | 3.294 83.67 | 4.778 121.36 | 3.571 90.70 | 4.515 114.68 | 0.100 2.54 | 0.080 2.03 | 3.10 78.7 | 3.29 83.6 | 5.00 127.0 | 4.77 121.2 | 1313 |
| 7313 | 3.294 83.67 | 4.778 121.36 | 3.571 90.70 | 4.515 114.68 | 0.100 2.54 | 0.080 2.03 | 3.10 78.7 | 3.29 83.6 | 5.00 127.0 | 4.77 121.2 | 7313 |
| 5313 | 3.294 83.67 | 4.778 121.36 | 3.571 90.70 | 4.515 114.68 | 0.100 2.54 | 0.080 2.03 | 3.10 78.7 | 3.29 83.6 | 5.00 127.0 | 4.77 121.2 | 5313 |
| 1914 | 3.070 77.98 | 3.633 92.28 | 3.182 80.82 | 3.520 89.41 | 0.040 1.02 | 0.040 1.02 | 2.99 75.9 | 3.07 78.0 | 3.72 94.5 | 3.63 92.2 | 1914 |
| 1014 | 3.157 80.19 | 3.933 99.90 | 3.312 84.12 | 3.779 95.99 | 0.080 2.03 | 0.040 1.02 | 3.05 77.5 | 3.15 80.0 | 4.07 103.4 | 3.93 99.8 | 1014 |
| 1214 | 3.338 84.79 | 4.391 111.53 | 3.528 89.61 | 4.213 107.01 | 0.100 2.54 | 0.060 1.52 | 3.22 81.8 | 3.33 84.6 | 4.55 115.6 | 4.39 111.5 | 1214 |
| 5214 | 3.338 84.79 | 4.391 111.53 | 3.528 89.61 | 4.213 107.01 | 0.100 2.54 | 0.060 1.52 | 3.22 81.8 | 3.33 84.6 | 4.55 115.6 | 4.39 111.5 | 5214 |
| 1314 | 3.512 89.20 | 5.094 129.39 | 3.808 96.72 | 4.811 122.20 | 0.125 3.18 | 0.080 2.03 | 3.32 84.3 | 3.51 89.2 | 5.34 135.6 | 5.09 129.3 | 1314 |
| 7314 | 3.512 89.20 | 5.094 129.39 | 3.808 96.72 | 4.811 122.20 | 0.125 3.18 | 0.080 2.03 | 3.32 84.3 | 3.51 89.2 | 5.34 135.6 | 5.09 129.3 | 7314 |
| 5314 | 3.512 89.20 | 5.094 129.39 | 3.808 96.72 | 4.811 122.20 | 0.125 3.18 | 0.080 2.03 | 3.32 84.3 | 3.51 89.2 | 5.34 135.6 | 5.09 129.3 | 5314 |
| 1915 | 3.265 82.93 | 3.828 97.23 | 3.377 85.78 | 3.716 94.39 | 0.040 1.02 | 0.040 1.02 | 3.18 80.8 | 3.26 82.8 | 3.92 99.6 | 3.82 97.0 | 1915 |
| 1015 | 3.355 85.22 | 4.131 104.93 | 3.510 89.15 | 3.977 101.02 | 0.080 2.03 | 0.040 1.02 | 3.25 82.6 | 3.35 85.1 | 4.27 108.5 | 4.13 104.9 | 1015 |
| 1215 | 3.505 89.03 | 4.558 115.77 | 3.695 93.85 | 4.380 111.25 | 0.100 2.54 | 0.060 1.52 | 3.37 85.6 | 3.50 88.9 | 4.73 120.1 | 4.55 115.6 | 1215 |

* The maximum fillet on the shaft or in the housing that the bearing corner will clear.

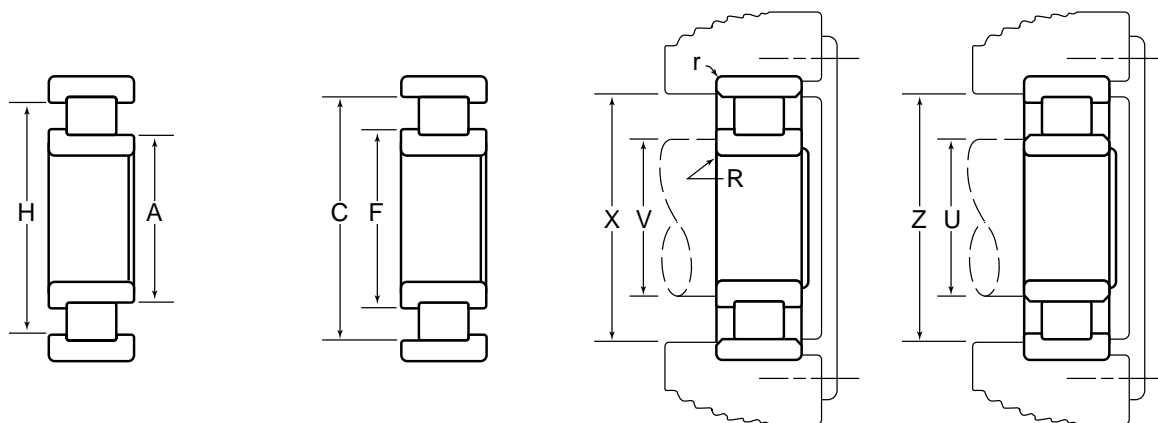
Cylindrical Roller Bearings



| Basic Bearing Number | B | | D | | W | Radial Load Ratings — lbs./N | | | | | | | | | |
|----------------------|------------------|-------------------|-------------------|------------------|-----------------------|------------------------------|-----------------------|---------|----------------------|-----------------|------------------|-----------------|---------------------------|-----------------|-----------------|
| | Bore Diameter | Outside Diameter | | Width | One Piece Steel Cage | | | | Composite Steel Cage | | X Bar Steel Cage | | Full Complement (No Cage) | | |
| | | Standard Style | "A" * Style | | Outer Ring Assemblies | | Inner Ring Assemblies | | Dynamic | Static | Dynamic | Static | Dynamic | Static | Dynamic |
| | Inch/mm | | | | | Dynamic | Static | Dynamic | Static | Dynamic | Static | Dynamic | Static | Dynamic | Static |
| 5215 | 2.9528 75.000 | 5.1181 130.000 | 5.1204 130.058 | 1.6250 41.275 | | | | | | 43000 191000 | 62500 278000 | 43000 191000 | 62500 278000 | | |
| 1315 | 2.9528 75.000 | 6.2992 160.000 | 6.3020 160.071 | 1.4567 37.000 | | | | | | 45500 202000 | 50500 224000 | | | | |
| 7315 | 2.9528 75.000 | 6.2992 160.000 | 6.3020 160.071 | 1.8110 46.000 | | | | | | 60000 267000 | 72500 320000 | | | | |
| 5315 | 2.9528 75.000 | 6.2992 160.000 | 6.3020 160.071 | 2.6875 68.262 | | | | | | | | | | | |
| 1916 | 3.1496 80.000 | 4.3307 110.000 | 4.3329 110.056 | 0.6299 16.000 | | | | | | | | | | | |
| 1016 | 3.1496 80.000 | 4.9213 125.000 | 4.9236 125.059 | 0.8661 22.000 | | | | | | 18500 82500 | 23900 107000 | 17600 78500 | 23400 104000 | | |
| 1216 | 3.1496 80.000 | 5.5118 140.000 | 5.5141 140.058 | 1.0236 26.000 | | | | | | 26700 119000 | 32500 144000 | 27700 123000 | 34000 151000 | | |
| 5216 | 3.1496 80.000 | 5.5118 140.000 | 5.5141 140.058 | 1.7500 44.450 | | | | | | 46500 207000 | 66000 294000 | 48500 215000 | 69500 310000 | | |
| 1316 | 3.1496 80.000 | 6.6929 170.000 | 6.6957 170.071 | 1.5354 39.000 | | | | | | 54000 241000 | 62000 276000 | | | | |
| 7316 | 3.1496 80.000 | 6.6929 170.000 | 6.6957 170.071 | 1.9291 49.000 | | | | | | | | | | | |
| 5316 | 3.1496 80.000 | 6.6929 170.000 | 6.6957 170.071 | 2.6875 68.262 | | | | | | | | | | | |
| 1917 | 3.3465 85.000 | 4.7244 120.000 | 4.7266 120.056 | 0.7087 18.000 | | | | | | | | | | | |
| 1017 | 3.3465 85.000 | 5.1181 130.000 | 5.1204 130.058 | 0.8661 22.000 | | | | | | 19000 84500 | 25100 112000 | | | | |
| 1217 | 3.3465 85.000 | 5.9055 150.000 | 5.9081 150.066 | 1.1024 28.000 | | | | | | 31000 139000 | 38000 169000 | | | 37500 167000 | 48500 216000 |
| 5217 | 3.3465 85.000 | 5.9055 150.000 | 5.9081 150.066 | 1.9375 49.212 | | | | | | 55500 246000 | 79000 350000 | 57500 256000 | 83500 370000 | | |
| 1317 | 3.3465 85.000 | 7.0866 180.000 | 7.0894 180.071 | 1.6142 41.000 | | | | | | 54500 243000 | 61000 272000 | | | | |
| 7317 | 3.3465 85.000 | 7.0866 180.000 | 7.0894 180.071 | 2.0079 51.000 | | | | | | | | | | | |
| 5317 | 3.3465 85.000 | 7.0866 180.000 | 7.0894 180.071 | 2.8750 73.025 | | | | | | | | | | | |

* Oversize outer ring for heavy press fit in standard housing bore.

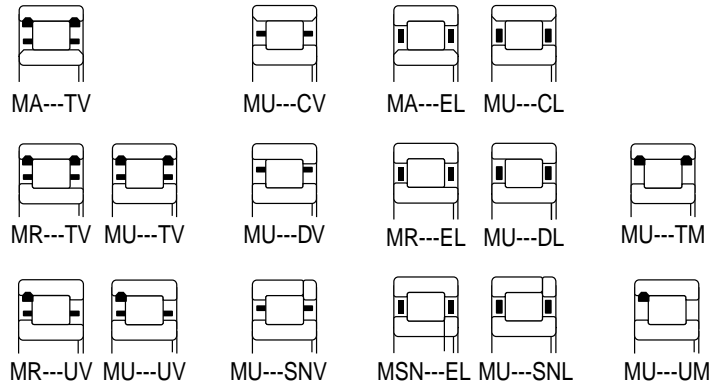
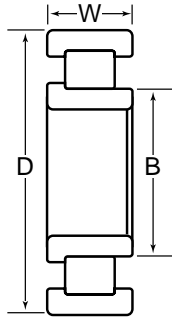
Dimensions and Ratings



| Basic Bearing Number | A | C | F | H | R | r | U | V | X | Z | Basic Bearing Number |
|----------------------|-----------------|-----------------|---------------------|---------------------|-------------------------|---------------|---------------------------------|---------------|-----------------------------------|---------------|----------------------|
| | Inner Ring O.D. | Outer Ring I.D. | Inner Ring Rib O.D. | Outer Ring Rib O.D. | Maximum * Fillet Radius | | Minimum Shaft Shoulder Diameter | | Maximum Housing Shoulder Diameter | | |
| | | | | | Shaft | Housing | Plain Rings | Rib Rings | Plain Rings | Rib Rings | |
| | Inch/mm | | | | | | | | | | |
| 5215 | 3.505 89.03 | 4.558 115.77 | 3.695 93.85 | 4.380 111.25 | 0.100 2.54 | 0.060 1.52 | 3.37 85.6 | 3.50 88.9 | 4.73 120.1 | 4.55 115.6 | 5215 |
| 1315 | 3.776 95.91 | 5.478 139.14 | 4.096 104.04 | 5.172 131.37 | 0.125 3.18 | 0.080 2.03 | 3.56 90.4 | 3.77 95.8 | 5.74 145.8 | 5.47 138.9 | 1315 |
| 7315 | 3.776 95.91 | 5.478 139.14 | 4.096 104.04 | 5.172 131.37 | 0.125 3.18 | 0.080 2.03 | 3.56 90.4 | 3.77 95.8 | 5.74 145.8 | 5.47 138.9 | 7315 |
| 5315 | 3.776 95.91 | 5.478 139.14 | 4.096 104.04 | 5.172 131.37 | 0.125 3.18 | 0.080 2.03 | 3.56 90.4 | 3.77 95.8 | 5.74 145.8 | 5.47 138.9 | 5315 |
| 1916 | 3.460 87.88 | 4.023 102.18 | 3.572 90.73 | 3.911 99.34 | 0.040 1.02 | 0.040 1.02 | 3.38 85.9 | 3.46 87.9 | 4.11 104.4 | 4.02 102.1 | 1916 |
| 1016 | 3.595 91.31 | 4.454 113.13 | 3.771 95.78 | 4.303 109.30 | 0.080 2.03 | 0.040 1.02 | 3.48 88.4 | 3.59 91.2 | 4.63 117.6 | 4.47 113.5 | 1016 |
| 1216 | 3.751 95.28 | 4.908 124.66 | 3.968 100.79 | 4.700 119.38 | 0.100 2.54 | 0.080 2.03 | 3.59 91.2 | 3.75 95.2 | 5.09 129.3 | 4.90 124.5 | 1216 |
| 5216 | 3.751 95.28 | 4.908 124.66 | 3.968 100.79 | 4.700 119.38 | 0.100 2.54 | 0.080 2.03 | 3.59 91.2 | 3.75 95.2 | 5.09 129.3 | 4.90 124.5 | 5216 |
| 1316 | 4.001 101.63 | 5.804 147.42 | 4.342 110.29 | 5.480 139.19 | 0.125 3.18 | 0.080 2.03 | 3.78 96.0 | 4.00 101.6 | 6.08 154.4 | 5.80 147.3 | 1316 |
| 7316 | 4.001 101.63 | 5.804 147.42 | 4.342 110.29 | 5.480 139.19 | 0.125 3.18 | 0.080 2.03 | 3.78 96.0 | 4.00 101.6 | 6.08 154.4 | 5.80 147.3 | 7316 |
| 5316 | 4.001 101.63 | 5.804 147.42 | 4.342 110.29 | 5.480 139.19 | 0.125 3.18 | 0.080 2.03 | 3.78 96.0 | 4.00 101.6 | 6.08 154.4 | 5.80 147.3 | 5316 |
| 1917 | 3.725 94.62 | 4.357 110.67 | 3.851 97.82 | 4.231 107.47 | 0.060 1.52 | 0.040 1.02 | 3.63 92.2 | 3.72 94.5 | 4.48 113.8 | 4.35 110.5 | 1917 |
| 1017 | 3.792 96.32 | 4.654 118.21 | 3.968 100.79 | 4.500 114.30 | 0.080 2.03 | 0.040 1.02 | 3.68 93.5 | 3.79 96.3 | 4.83 122.7 | 4.67 118.6 | 1017 |
| 1217 | 4.016 102.01 | 5.284 134.21 | 4.254 108.05 | 5.056 128.42 | 0.125 3.18 | 0.080 2.03 | 3.86 98.0 | 4.01 101.9 | 5.48 139.2 | 5.28 134.1 | 1217 |
| 5217 | 4.016 102.01 | 5.284 134.21 | 4.254 108.05 | 5.056 128.42 | 0.125 3.18 | 0.080 2.03 | 3.86 98.0 | 4.01 101.9 | 5.48 139.2 | 5.28 134.1 | 5217 |
| 1317 | 4.273 108.53 | 6.198 157.43 | 4.655 118.24 | 5.852 148.64 | 0.156 3.96 | 0.100 2.54 | 4.05 102.9 | 4.27 108.5 | 6.47 164.3 | 6.19 157.2 | 1317 |
| 7317 | 4.273 108.53 | 6.198 157.43 | 4.655 118.24 | 5.852 148.64 | 0.156 3.96 | 0.100 2.54 | 4.05 102.9 | 4.27 108.5 | 6.47 164.3 | 6.19 157.2 | 7317 |
| 5317 | 4.273 108.53 | 6.198 157.43 | 4.655 118.24 | 5.852 148.64 | 0.156 3.96 | 0.100 2.54 | 4.05 102.9 | 4.27 108.5 | 6.47 164.3 | 6.19 157.2 | 5317 |

* The maximum fillet on the shaft or in the housing that the bearing corner will clear.

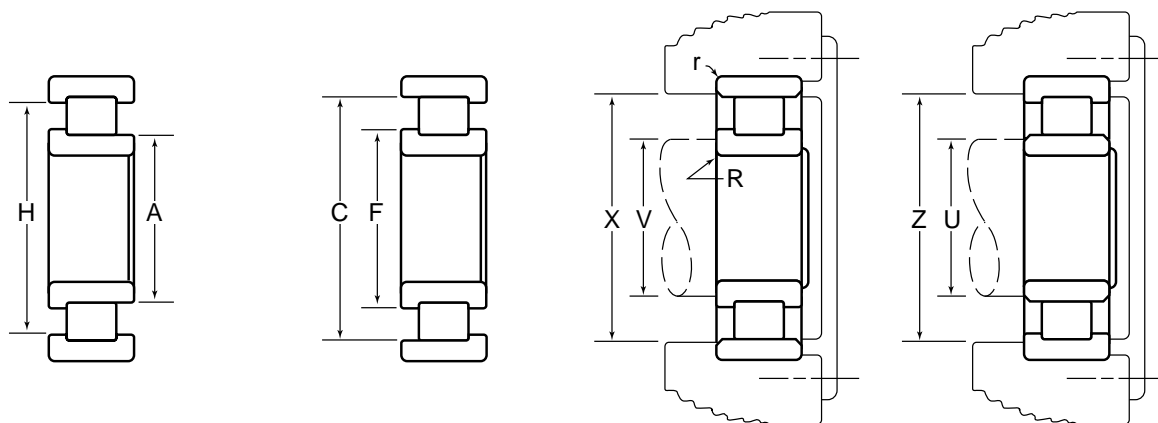
Cylindrical Roller Bearings



| Basic Bearing Number | B | | D | | W | Radial Load Ratings — lbs./N | | | | | | | | | |
|----------------------|-------------------|-------------------|-------------------|------------------|-----------------------|------------------------------|-----------------------|-----------------|----------------------|------------------|------------------|------------------|---------------------------|-----------------|---------|
| | Bore Diameter | Outside Diameter | | Width | One Piece Steel Cage | | | | Composite Steel Cage | | X Bar Steel Cage | | Full Complement (No Cage) | | |
| | | Standard Style | "A" * Style | | Outer Ring Assemblies | | Inner Ring Assemblies | | Dynamic | Static | Dynamic | Static | Dynamic | Static | Dynamic |
| | Inch/mm | | | | | Dynamic | Static | Dynamic | Static | Dynamic | Static | Dynamic | Static | Dynamic | Static |
| 1918 | 3.5433 90.000 | 4.9213 125.000 | 4.9236 125.059 | 0.7087 18.000 | | | | | | | | | | | |
| 1018 | 3.5433 90.000 | 5.5118 140.000 | 5.5141 140.058 | 0.9449 24.000 | | | | | | | | | | | |
| 1218 | 3.5433 90.000 | 6.2992 160.000 | 6.3020 160.071 | 1.1811 30.000 | | | 36500 163000 | 45000 200000 | 35000 156000 | 42500 189000 | 38000 170000 | 47500 211000 | 43000 192000 | 55000 246000 | |
| 5218 | 3.5433 90.000 | 6.2992 160.000 | 6.3020 160.071 | 2.0625 52.388 | 65000 290000 | 94000 420000 | | | | | | 68000 300000 | 99000 440000 | | |
| 1318 | 3.5433 90.000 | 7.4803 190.000 | 7.4833 190.076 | 1.6929 43.000 | | | 68500 305000 | 80000 355000 | 61500 273000 | 69500 310000 | 68500 305000 | 80000 355000 | | | |
| 7318 | 3.5433 90.000 | 7.4803 190.000 | 7.4833 190.076 | 2.1260 54.000 | | | | | | | | | | | |
| 5318 | 3.5433 90.000 | 7.4803 190.000 | 7.4833 190.076 | 2.8750 73.025 | | | | | | | | | | | |
| 1919 | 3.7402 95.000 | 5.1181 130.000 | 5.1204 130.058 | 0.7087 18.000 | | | | | | | | | | | |
| 1019 | 3.7402 95.000 | 5.7087 145.000 | 5.7113 145.067 | 0.9449 24.000 | | | | | | | | | | | |
| 1219 | 3.7402 95.000 | 6.6929 170.000 | 6.6957 170.071 | 1.2598 32.000 | | | | | | | | | | | |
| 5219 | 3.7402 95.000 | 6.6929 170.000 | 6.6957 170.071 | 2.1875 55.562 | | | | | 72000 320000 | 103000 460000 | | | | | |
| 1319 | 3.7402 95.000 | 7.8740 200.000 | 7.8771 200.078 | 1.7717 45.000 | | | | | 65000 289000 | 75500 335000 | | | | | |
| 7319 | 3.7402 95.000 | 7.8740 200.000 | 7.8771 200.078 | 2.2047 56.000 | | | | | | | | | | | |
| 5319 | 3.7402 95.000 | 7.8740 200.000 | 7.8771 200.078 | 3.0625 77.788 | | | | | | | | | | | |
| 1920 | 3.9370 100.000 | 5.5118 140.000 | 5.5141 140.058 | 0.7874 20.000 | | | | | | | | | | | |
| 1020 | 3.9370 100.000 | 5.9055 150.000 | 5.9081 150.066 | 0.9499 24.000 | | | 20300 90000 | 28700 128000 | | | | | | | |
| 1220 | 3.9370 100.000 | 7.0866 180.000 | 7.0894 180.071 | 1.3386 34.000 | | | | | 47500 211000 | 59000 263000 | | | | | |
| 5220 | 3.9370 100.000 | 7.0866 180.000 | 7.0894 180.071 | 2.3750 60.325 | 83000 370000 | 121000 540000 | | | | | 83000 370000 | 121000 540000 | | | |

* Oversize outer ring for heavy press fit in standard housing bore.

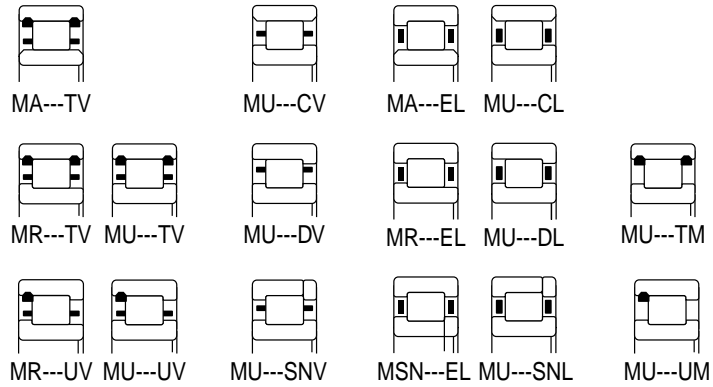
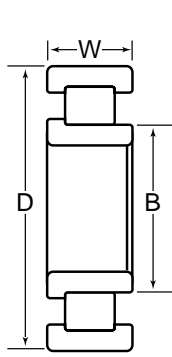
Dimensions and Ratings



| Basic Bearing Number | A | C | F | H | R | r | U | V | X | Z | Basic Bearing Number |
|----------------------|-----------------|-----------------|---------------------|---------------------|-------------------------|---------------|---------------------------------|---------------|-----------------------------------|---------------|----------------------|
| | Inner Ring O.D. | Outer Ring I.D. | Inner Ring Rib O.D. | Outer Ring Rib O.D. | Maximum * Fillet Radius | | Minimum Shaft Shoulder Diameter | | Maximum Housing Shoulder Diameter | | |
| | | | | | Shaft | Housing | Plain Rings | Rib Rings | Plain Rings | Rib Rings | |
| | | | | | | | | | | | |
| 1918 | 3.920 99.57 | 4.553 115.65 | 4.046 102.77 | 4.426 112.42 | 0.060 1.52 | 0.040 1.02 | 3.82 97.0 | 3.92 99.6 | 4.67 118.6 | 4.55 115.6 | 1918 |
| 1018 | 4.030 102.36 | 5.031 127.79 | 4.229 107.42 | 4.831 122.71 | 0.100 2.54 | 0.060 1.52 | 3.92 99.6 | 4.03 102.4 | 5.18 131.6 | 5.03 127.8 | 1018 |
| 1218 | 4.221 107.21 | 5.598 142.19 | 4.495 114.17 | 5.350 135.89 | 0.125 3.18 | 0.080 2.03 | 4.06 103.1 | 4.22 107.2 | 5.81 147.6 | 5.59 142.0 | 1218 |
| 5218 | 4.221 107.21 | 5.598 142.19 | 4.495 114.17 | 5.350 135.89 | 0.125 3.18 | 0.080 2.03 | 4.06 103.1 | 4.22 107.2 | 5.81 147.6 | 5.59 142.0 | 5218 |
| 1318 | 4.489 114.02 | 6.512 165.40 | 4.895 124.33 | 6.148 156.16 | 0.156 3.96 | 0.100 2.54 | 4.26 108.2 | 4.48 113.8 | 6.80 172.7 | 6.51 165.4 | 1318 |
| 7318 | 4.489 114.02 | 6.512 165.40 | 4.895 124.33 | 6.148 156.16 | 0.156 3.96 | 0.100 2.54 | 4.26 108.2 | 4.48 113.8 | 6.80 172.7 | 6.51 165.4 | 7318 |
| 5318 | 4.489 114.02 | 6.512 165.40 | 4.895 124.33 | 6.148 156.16 | 0.156 3.96 | 0.100 2.54 | 4.26 108.2 | 4.48 113.8 | 6.80 172.7 | 6.51 165.4 | 5318 |
| 1919 | 4.115 104.52 | 4.748 120.60 | 4.241 107.72 | 4.622 117.40 | 0.060 1.52 | 0.040 1.02 | 4.02 102.1 | 4.11 104.4 | 4.87 123.7 | 4.74 120.4 | 1919 |
| 1019 | 4.226 107.34 | 5.227 132.77 | 4.425 112.40 | 5.027 127.69 | 0.100 2.54 | 0.060 1.52 | 4.11 104.4 | 4.22 107.2 | 5.38 136.7 | 5.22 132.6 | 1019 |
| 1219 | 4.469 113.51 | 5.954 151.23 | 4.765 121.03 | 5.688 144.48 | 0.125 3.18 | 0.080 2.03 | 4.29 109.0 | 4.46 113.3 | 6.18 157.0 | 5.95 151.1 | 1219 |
| 5219 | 4.469 113.51 | 5.954 151.23 | 4.765 121.03 | 5.688 144.48 | 0.125 3.18 | 0.080 2.03 | 4.29 109.0 | 4.46 113.3 | 6.18 157.0 | 5.95 151.1 | 5219 |
| 1319 | 4.809 122.15 | 6.832 173.53 | 5.215 132.46 | 6.468 164.29 | 0.156 3.96 | 0.100 2.54 | 4.53 155.1 | 4.80 121.9 | 7.16 181.9 | 6.83 173.5 | 1319 |
| 7319 | 4.809 122.15 | 6.832 173.53 | 5.215 132.46 | 6.468 164.29 | 0.156 3.96 | 0.100 2.54 | 4.53 155.1 | 4.80 121.9 | 7.16 181.9 | 6.83 173.5 | 7319 |
| 5319 | 4.809 122.15 | 6.832 173.53 | 5.215 132.46 | 6.468 164.29 | 0.156 3.96 | 0.100 2.54 | 4.53 155.1 | 4.80 121.9 | 7.16 181.9 | 6.83 173.5 | 5319 |
| 1920 | 4.331 110.01 | 5.108 129.74 | 4.485 113.92 | 4.953 125.81 | 0.060 1.52 | 0.040 1.02 | 4.22 107.2 | 4.33 110.0 | 5.25 133.4 | 5.10 129.5 | 1920 |
| 1020 | 4.423 112.34 | 5.424 137.77 | 4.622 117.40 | 5.224 132.69 | 0.100 2.54 | 0.060 1.52 | 4.31 109.5 | 4.42 112.3 | 5.58 141.7 | 5.42 137.7 | 1020 |
| 1220 | 4.764 121.01 | 6.347 161.21 | 5.057 128.45 | 6.070 154.18 | 0.156 3.96 | 0.080 2.03 | 4.57 116.1 | 4.76 120.9 | 6.58 167.1 | 6.34 161.0 | 1220 |
| 5220 | 4.764 121.01 | 6.347 161.21 | 5.057 128.45 | 6.070 154.18 | 0.156 3.96 | 0.080 2.03 | 4.57 116.1 | 4.76 120.9 | 6.58 167.1 | 6.34 161.0 | 5220 |

* The maximum fillet on the shaft or in the housing that the bearing corner will clear.

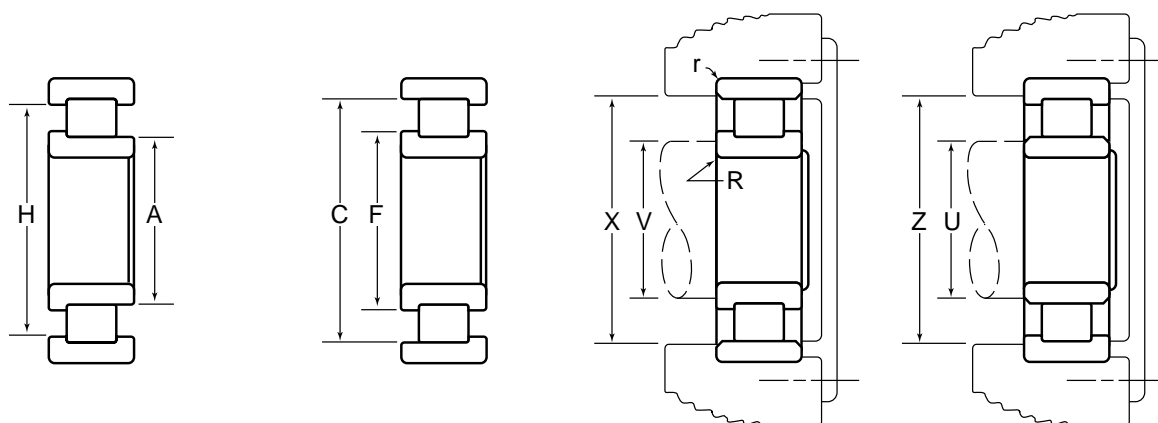
Cylindrical Roller Bearings



| Basic Bearing Number | B | | D | | W | Radial Load Ratings — lbs./N | | | | | | | | | |
|----------------------|-------------------|-------------------|-------------------|------------------|-----------------------|------------------------------|-----------------------|------------------|----------------------|------------------|------------------|-----------------|---------------------------|-----------------|---------|
| | Bore Diameter | Outside Diameter | | Width | One Piece Steel Cage | | | | Composite Steel Cage | | X Bar Steel Cage | | Full Complement (No Cage) | | |
| | | Standard Style | "A" * Style | | Outer Ring Assemblies | | Inner Ring Assemblies | | Dynamic | Static | Dynamic | Static | Dynamic | Static | Dynamic |
| | Inch/mm | | | | | Dynamic | Static | Dynamic | Static | Dynamic | Static | Dynamic | Static | Dynamic | Static |
| 1320 | 3.9370 100.000 | 8.4646 215.000 | 8.4680 215.087 | 1.8504 47.000 | | | | | | 71500 320000 | 84000 375000 | | | | |
| 7320 | 3.9370 100.000 | 8.4646 215.000 | 8.4680 215.087 | 2.3622 60.000 | | | | | | | | | | | |
| 5320 | 3.9370 100.000 | 8.4646 215.000 | 8.4680 215.087 | 3.2500 82.550 | | | | | | | | | | | |
| 1921 | 4.1339 105.000 | 5.7087 145.000 | 5.7113 145.067 | 0.7874 20.000 | | | 17400 77000 | 25900 115000 | | | | | | | |
| 1021 | 4.1339 105.000 | 6.2992 160.000 | 6.3020 160.071 | 1.0236 26.000 | | | 30500 135000 | 43500 193000 | | | | | | | |
| 1221 | 4.1339 105.000 | 7.4803 190.000 | 7.4833 190.076 | 1.4173 36.000 | | | 50500 225000 | 63000 280000 | | | | | 59000 262000 | 77000 340000 | |
| 5221 | 4.1339 105.000 | 7.4803 190.000 | 7.4833 190.076 | 2.5625 65.088 | | | | | | | | | | | |
| 1321 | 4.1339 105.000 | 8.8583 225.000 | 8.8618 225.090 | 1.9291 49.000 | | | 89500 400000 | 110000 490000 | 85000 380000 | 103000 455000 | | | | | |
| 7321 | 4.1339 105.000 | 8.8583 225.000 | 8.8618 225.090 | 2.4803 63.000 | | | | | | | | | | | |
| 5321 | 4.1339 105.000 | 8.8583 225.000 | 8.8618 225.090 | 3.4375 87.312 | | | | | | | | | | | |
| 1922 | 4.3307 110.000 | 5.9055 150.000 | 5.9081 150.066 | 0.7874 20.000 | | | 17600 78500 | 26800 119000 | 17600 78500 | 26800 119000 | 17600 78500 | 26800 119000 | | | |
| 1022 | 4.3307 110.000 | 6.6929 170.000 | 6.6957 170.071 | 1.1024 28.000 | | | | | | | | | | | |
| 1222 | 4.3307 110.000 | 7.8740 200.000 | 7.8771 200.078 | 1.4961 38.000 | | | 54000 240000 | 68000 305000 | 52000 230000 | 64500 287000 | | | | | |
| 5222 | 4.3307 110.000 | 7.8740 200.000 | 7.8771 200.078 | 2.7500 69.850 | | | | | 94000 420000 | 139000 620000 | | | | | |
| 1322 | 4.3307 110.000 | 9.4488 240.000 | 9.4526 240.096 | 1.9685 50.000 | | | | | | | | | | | |
| 7322 | 4.3307 110.000 | 9.4488 240.000 | 9.4526 240.096 | 2.5591 65.000 | | | | | | | | | | | |
| 5322 | 4.3307 110.000 | 9.4488 240.000 | 9.4526 240.096 | 3.6250 92.075 | | | | | | | | | | | |
| 1924 | 4.7244 120.000 | 6.4961 165.000 | 6.4989 165.072 | 0.8661 22.000 | | | 22000 98000 | 33500 148000 | | | | | | | |

* Oversize outer ring for heavy press fit in standard housing bore.

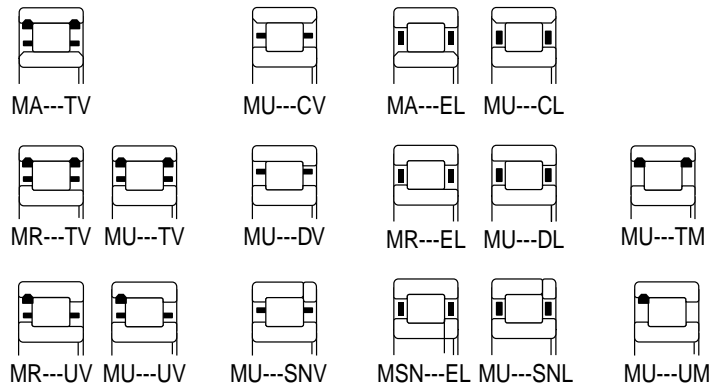
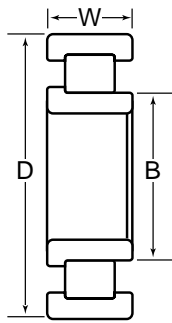
Dimensions and Ratings



| Basic Bearing Number | A | C | F | H | R | r | U | V | X | Z | Basic Bearing Number |
|----------------------|-----------------|-----------------|---------------------|---------------------|-------------------------|---------------|---------------------------------|---------------|-----------------------------------|---------------|----------------------|
| | Inner Ring O.D. | Outer Ring I.D. | Inner Ring Rib O.D. | Outer Ring Rib O.D. | Maximum * Fillet Radius | | Minimum Shaft Shoulder Diameter | | Maximum Housing Shoulder Diameter | | |
| | | | | | Shaft | Housing | Plain Rings | Rib Rings | Plain Rings | Rib Rings | |
| | | | | | | | | | | | |
| 1320 | 5.125 130.18 | 7.280 184.91 | 5.530 140.46 | 6.892 175.06 | 0.187 4.75 | 0.100 2.54 | 4.82 122.4 | 5.12 130.0 | 7.66 194.6 | 7.28 184.9 | 1320 |
| 7320 | 5.125 130.18 | 7.280 184.91 | 5.530 140.46 | 6.892 175.06 | 0.187 4.75 | 0.100 2.54 | 4.82 122.4 | 5.12 130.0 | 7.66 194.6 | 7.28 184.9 | 7320 |
| 5320 | 5.125 130.18 | 7.280 184.91 | 5.530 140.46 | 6.892 175.06 | 0.187 4.75 | 0.100 2.54 | 4.82 122.4 | 5.12 130.0 | 7.66 194.6 | 7.28 184.9 | 5320 |
| 1921 | 4.527 114.99 | 5.305 134.75 | 4.682 118.92 | 5.150 130.81 | 0.060 1.52 | 0.040 1.02 | 4.41 112.0 | 4.52 114.8 | 5.44 138.2 | 5.30 134.6 | 1921 |
| 1021 | 4.691 119.15 | 5.746 145.95 | 4.901 124.49 | 5.536 140.61 | 0.100 2.54 | 0.080 2.03 | 4.56 115.8 | 4.69 119.1 | 5.91 150.1 | 5.74 145.8 | 1021 |
| 1221 | 4.981 126.52 | 6.636 168.55 | 5.310 134.87 | 6.339 161.01 | 0.156 3.96 | 0.080 2.03 | 4.78 121.4 | 4.98 126.5 | 6.90 175.3 | 6.63 168.4 | 1221 |
| 5221 | 4.981 126.52 | 6.636 168.55 | 5.310 134.87 | 6.339 161.01 | 0.156 3.96 | 0.080 2.03 | 4.78 121.4 | 4.98 126.5 | 6.90 175.3 | 6.63 168.4 | 5221 |
| 1321 | 5.362 136.19 | 7.616 193.45 | 5.794 147.17 | 7.211 183.16 | 0.187 4.75 | 0.100 2.54 | 5.04 128.0 | 5.36 136.1 | 8.01 203.5 | 7.61 193.3 | 1321 |
| 7321 | 5.362 136.19 | 7.616 193.45 | 5.794 147.17 | 7.211 183.16 | 0.187 4.75 | 0.100 2.54 | 5.04 128.0 | 5.36 136.1 | 8.01 203.5 | 7.61 193.3 | 7321 |
| 5321 | 5.362 136.19 | 7.616 193.45 | 5.794 147.17 | 7.211 183.16 | 0.187 4.75 | 0.100 2.54 | 5.04 128.0 | 5.36 136.1 | 8.01 203.5 | 7.61 193.3 | 5321 |
| 1922 | 4.724 119.99 | 5.502 139.75 | 4.879 123.93 | 5.347 135.81 | 0.060 1.52 | 0.040 1.02 | 4.61 117.1 | 4.72 119.9 | 5.64 143.3 | 5.50 139.7 | 1922 |
| 1022 | 4.935 125.35 | 6.092 154.74 | 5.166 131.22 | 5.862 148.89 | 0.100 2.54 | 0.080 2.03 | 4.80 121.9 | 4.93 125.2 | 6.27 159.3 | 6.09 154.7 | 1022 |
| 1222 | 5.234 132.94 | 6.937 176.20 | 5.575 141.60 | 6.631 168.43 | 0.156 3.96 | 0.080 2.03 | 5.01 127.3 | 5.23 132.8 | 7.24 183.9 | 6.93 176.0 | 1222 |
| 5222 | 5.234 132.94 | 6.937 176.20 | 5.575 141.60 | 6.631 168.43 | 0.156 3.96 | 0.080 2.03 | 5.01 127.3 | 5.23 132.8 | 7.24 183.9 | 6.93 176.0 | 5222 |
| 1322 | 5.719 145.26 | 8.124 206.35 | 6.200 157.48 | 7.692 195.38 | 0.187 4.75 | 0.100 2.54 | 5.35 135.9 | 5.71 145.0 | 8.55 217.2 | 8.12 206.2 | 1322 |
| 7322 | 5.719 145.26 | 8.124 206.35 | 6.200 157.48 | 7.692 195.38 | 0.187 4.75 | 0.100 2.54 | 5.35 135.9 | 5.71 145.0 | 8.55 217.2 | 8.12 206.2 | 7322 |
| 5322 | 5.719 145.26 | 8.124 206.35 | 6.200 157.48 | 7.692 195.38 | 0.187 4.75 | 0.100 2.54 | 5.35 135.9 | 5.71 145.0 | 8.55 217.2 | 8.12 206.2 | 5322 |
| 1924 | 5.177 131.50 | 6.062 153.97 | 5.353 135.97 | 5.886 149.50 | 0.080 2.03 | 0.040 1.02 | 5.11 129.8 | 5.17 131.3 | 6.21 157.7 | 6.06 153.9 | 1924 |

* The maximum fillet on the shaft or in the housing that the bearing corner will clear.

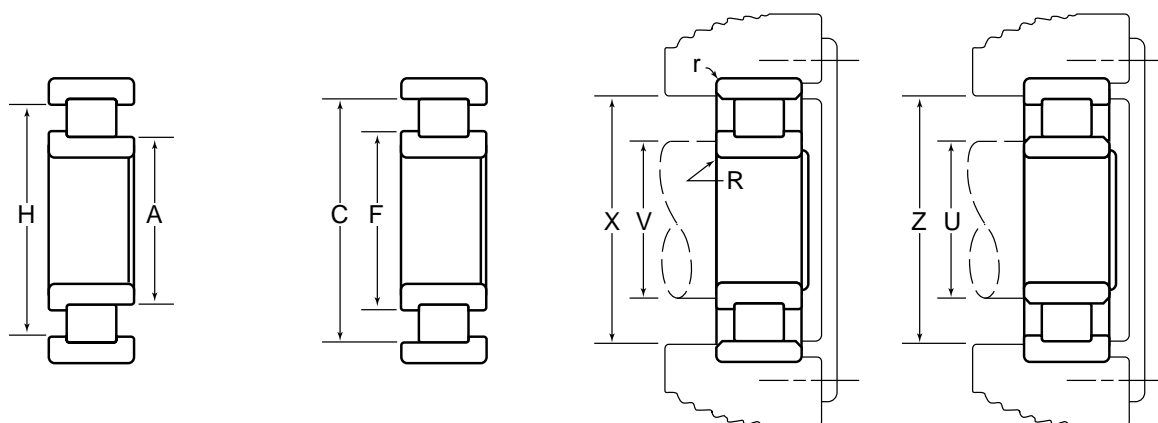
Cylindrical Roller Bearings



| Basic Bearing Number | B | | D | | W | Radial Load Ratings — lbs./N | | | | | | | | | |
|----------------------|-------------------|--------------------|--------------------|-------------------|-----------------------|------------------------------|-----------------------|-----------------|----------------------|------------------|------------------|------------------|---------------------------|---------|---------|
| | Bore Diameter | Outside Diameter | | Width | One Piece Steel Cage | | | | Composite Steel Cage | | X Bar Steel Cage | | Full Complement (No Cage) | | |
| | | Standard Style | "A" * Style | | Outer Ring Assemblies | | Inner Ring Assemblies | | Dynamic | Static | Dynamic | Static | Dynamic | Static | Dynamic |
| | Inch/mm | | | | | Dynamic | Static | Dynamic | Static | Dynamic | Static | Dynamic | Static | Dynamic | Static |
| 1024 | 4.7244 120.000 | 7.0866 180.000 | 7.0894 180.071 | 1.1024 28.000 | | | | | | | | | | | |
| 1224 | 4.7244 120.000 | 8.4646 215.000 | 8.4680 215.087 | 1.5748 40.000 | | | | | | | | | | | |
| 5224 | 4.7244 120.000 | 8.4646 215.000 | 8.4680 215.087 | 3.0000 76.200 | | | | | 128000 570000 | 204000 905000 | 133000 595000 | 215000 955000 | | | |
| 1324 | 4.7244 120.000 | 10.2362 260.000 | 10.2402 260.101 | 2.1654 55.000 | | | | | | | | | | | |
| 7324 | 4.7244 120.000 | 10.2362 260.000 | 10.2402 260.101 | 2.7953 71.000 | | | | | | | | | | | |
| 5324 | 4.7244 120.000 | 10.2362 260.000 | 10.2402 260.101 | 4.1250 4.775 | | | | | | | | | | | |
| 1926 | 5.1181 130.000 | 7.0866 180.000 | 7.0894 180.071 | 0.9449 24.000 | | | 29400 131000 | 45500 203000 | 30000 134000 | 47000 209000 | | | | | |
| 1026 | 5.1181 130.000 | 7.8740 200.000 | 7.8771 200.078 | 1.2992 33.000 | | | | | 46500 207000 | 66500 296000 | | | | | |
| 1226 | 5.1181 130.000 | 9.0551 230.000 | 9.0587 230.091 | 1.5748 40.000 | | | | | | | | | | | |
| 5226 | 5.1181 130.000 | 9.0551 230.000 | 9.0587 230.091 | 3.1250 79.375 | | | | | 116000 515000 | 174000 775000 | 126000 560000 | 195000 865000 | | | |
| 1326 | 5.1181 130.000 | 11.0236 280.000 | 11.0276 280.101 | 2.2835 58.000 | | | | | | | | | | | |
| 7326 | 5.1181 130.000 | 11.0236 280.000 | 11.0276 280.101 | 2.9528 75.000 | | | | | | | | | | | |
| 5326 | 5.1181 130.000 | 11.0236 280.000 | 11.0276 280.101 | 4.3750 111.125 | | | | | | | | | | | |
| 1928 | 5.5118 140.000 | 7.4803 190.000 | 7.4833 190.076 | 0.9449 24.000 | | | | | | | | | | | |
| 1028 | 5.5118 140.000 | 8.2677 210.000 | 8.2709 210.081 | 1.2992 33.000 | | | | | | | | | | | |
| 1228 | 5.5118 140.000 | 9.8425 250.000 | 9.8463 250.096 | 1.6535 42.000 | 78000 345000 | 98500 435000 | 78000 345000 | 98500 435000 | | | | | | | |
| 5228 | 5.5118 140.000 | 9.8425 250.000 | 9.8463 250.096 | 3.2500 82.550 | | | | | | | | | | | |
| 1328 | 5.5118 140.000 | 11.8110 300.000 | 11.8154 300.111 | 2.4409 62.000 | | | | | | | | | | | |

* Oversize outer ring for heavy press fit in standard housing bore.

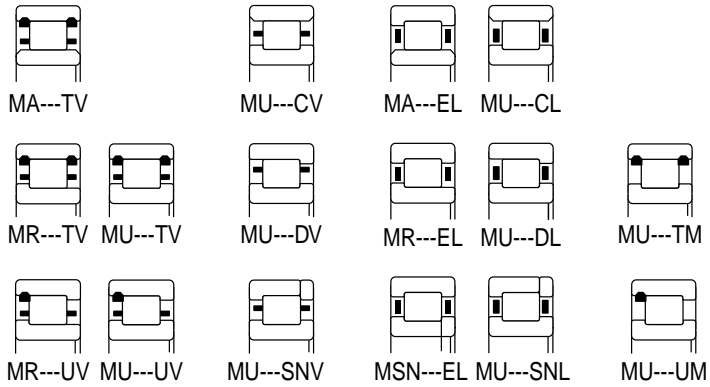
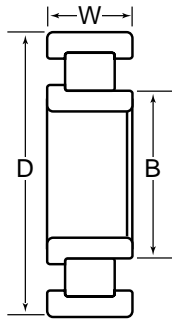
Dimensions and Ratings



| Basic Bearing Number | A | C | F | H | R | r | U | V | X | Z | Basic Bearing Number |
|----------------------|-----------------|------------------|---------------------|---------------------|-------------------------|---------------|---------------------------------|---------------|-----------------------------------|----------------|----------------------|
| | Inner Ring O.D. | Outer Ring I.D. | Inner Ring Rib O.D. | Outer Ring Rib O.D. | Maximum * Fillet Radius | | Minimum Shaft Shoulder Diameter | | Maximum Housing Shoulder Diameter | | |
| | | | | | Shaft | Housing | Plain Rings | Rib Rings | Plain Rings | Rib Rings | |
| | Inch/mm | | | | | | | | | | |
| 1024 | 5.329 135.36 | 6.486 164.74 | 5.560 141.22 | 6.256 158.90 | 0.125 3.18 | 0.080 2.03 | 5.20 132.1 | 5.32 135.1 | 6.66 169.2 | 6.48 164.6 | 1024 |
| 1224 | 5.714 145.14 | 7.518 190.96 | 6.075 154.30 | 7.194 182.73 | 0.187 4.75 | 0.080 2.03 | 5.48 139.2 | 5.71 145.0 | 7.83 198.9 | 7.51 190.8 | 1224 |
| 5224 | 5.714 145.14 | 7.518 190.96 | 6.075 154.30 | 7.194 182.73 | 0.187 4.75 | 0.080 2.03 | 5.48 139.2 | 5.71 145.0 | 7.83 198.9 | 7.51 190.8 | 5224 |
| 1324 | 6.182 157.02 | 8.782 223.06 | 6.700 170.18 | 8.315 211.20 | 0.250 6.35 | 0.100 2.54 | 5.82 147.8 | 6.18 157.0 | 9.26 235.2 | 8.78 223.0 | 1324 |
| 7324 | 6.182 157.02 | 8.782 223.06 | 6.700 170.18 | 8.315 211.20 | 0.250 6.35 | 0.100 2.54 | 5.82 147.8 | 6.18 157.0 | 9.26 235.2 | 8.78 223.0 | 7324 |
| 5324 | 6.182 157.02 | 8.782 223.06 | 6.700 170.18 | 8.315 211.20 | 0.250 6.35 | 0.100 2.54 | 5.82 147.8 | 6.18 157.0 | 9.26 235.2 | 8.78 223.0 | 5324 |
| 1926 | 5.605 142.37 | 6.607 167.82 | 5.804 147.42 | 6.407 162.74 | 0.080 2.03 | 0.060 1.52 | 5.48 139.2 | 5.60 142.2 | 6.76 171.7 | 6.60 167.6 | 1926 |
| 1026 | 5.810 147.57 | 7.188 182.58 | 6.085 154.56 | 6.913 175.59 | 0.125 3.18 | 0.080 2.03 | 5.63 143.0 | 5.81 147.6 | 7.41 188.2 | 7.18 182.4 | 1026 |
| 1226 | 6.101 154.97 | 8.125 206.38 | 6.485 164.72 | 7.761 197.13 | 0.187 4.75 | 0.100 2.54 | 5.87 149.1 | 6.10 154.9 | 8.42 213.9 | 8.12 206.2 | 1226 |
| 5226 | 6.101 154.97 | 8.125 206.38 | 6.485 164.72 | 7.761 197.13 | 0.187 4.75 | 0.100 2.54 | 5.87 149.1 | 6.10 154.9 | 8.42 213.9 | 8.12 206.2 | 5226 |
| 1326 | 6.714 170.54 | 9.557 242.75 | 7.280 184.91 | 9.046 229.77 | 0.250 6.35 | 0.125 3.18 | 6.31 160.3 | 6.71 170.4 | 10.02 254.5 | 9.55 242.6 | 1326 |
| 7326 | 6.714 170.54 | 9.557 242.75 | 7.280 184.91 | 9.046 229.77 | 0.250 6.35 | 0.125 3.18 | 6.31 160.3 | 6.71 170.4 | 10.02 254.5 | 9.55 242.6 | 7326 |
| 5326 | 6.714 170.54 | 9.557 242.75 | 7.280 184.91 | 9.046 229.77 | 0.250 6.35 | 0.125 3.18 | 6.31 160.3 | 6.71 170.4 | 10.02 254.5 | 9.55 242.6 | 5326 |
| 1928 | 6.001 152.43 | 7.003 177.88 | 6.200 157.48 | 6.803 172.80 | 0.080 2.03 | 0.060 1.52 | 5.87 149.1 | 6.00 152.4 | 7.15 181.6 | 7.00 177.8 | 1928 |
| 1028 | 6.203 157.56 | 7.581 192.56 | 6.478 164.54 | 7.307 185.60 | 0.156 3.96 | 0.080 2.03 | 6.05 153.7 | 6.20 157.5 | 7.80 198.1 | 7.58 192.5 | 1028 |
| 1228 | 6.632 168.45 | 8.835 224.41 | 7.050 179.07 | 8.440 214.38 | 0.187 4.75 | 0.100 2.54 | 6.36 161.5 | 6.63 168.4 | 9.15 232.4 | 8.83 224.3 | 1228 |
| 5228 | 6.632 168.45 | 8.835 224.41 | 7.050 179.07 | 8.440 214.38 | 0.187 4.75 | 0.100 2.54 | 6.36 161.5 | 6.63 168.4 | 9.15 232.4 | 8.83 224.3 | 5228 |
| 1328 | 7.153 181.69 | 10.161 258.09 | 7.755 196.98 | 9.620 244.35 | 0.312 7.92 | 0.125 3.18 | 6.77 172.0 | 7.15 181.6 | 10.68 271.3 | 10.16 258.1 | 1328 |

* The maximum fillet on the shaft or in the housing that the bearing corner will clear.

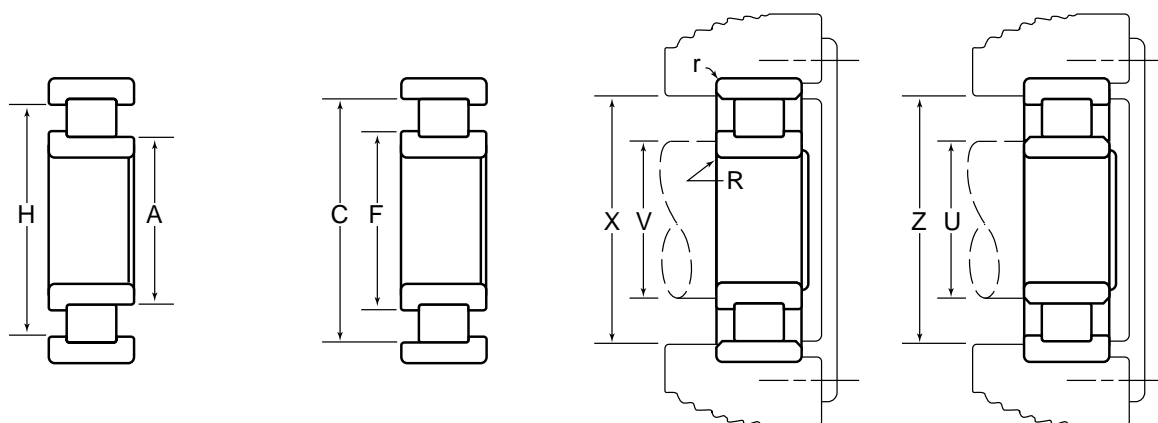
Cylindrical Roller Bearings



| Basic Bearing Number | B | | D | | W | Radial Load Ratings — lbs./N | | | | | | | | | | |
|----------------------|-------------------|--------------------|--------------------|-------------------|-----------------------|------------------------------|-----------------------|-----------------|----------------------|-----------------|------------------|-------------------|---------------------------|---------|---------|--------|
| | Bore Diameter | Outside Diameter | | Width | One Piece Steel Cage | | | | Composite Steel Cage | | X Bar Steel Cage | | Full Complement (No Cage) | | | |
| | | Standard Style | "A" * Style | | Outer Ring Assemblies | | Inner Ring Assemblies | | Dynamic | Static | Dynamic | Static | Dynamic | Static | Dynamic | Static |
| | Inch/mm | | | | | Dynamic | Static | Dynamic | Static | Dynamic | Static | Dynamic | Static | Dynamic | Static | |
| 7328 | 5.5118 140.000 | 11.8110 300.000 | 11.8154 300.111 | 3.2677 83.000 | | | | | | | | | | | | |
| 5328 | 5.5118 140.000 | 11.8110 300.000 | 11.8154 300.111 | 4.5000 114.300 | | | | | | | | | | | | |
| 1930 | 5.9055 150.000 | 8.2677 210.000 | 8.2709 210.081 | 1.1024 28.000 | | | | | | | | | | | | |
| 1030 | 5.9055 150.000 | 8.8583 225.000 | 8.8618 225.090 | 1.3780 35.000 | | | | | 57500 256000 | 87000 385000 | | | | | | |
| 1230 | 5.9055 150.000 | 10.6299 270.000 | 10.6339 270.101 | 1.7717 45.000 | | | | | | | | | | | | |
| 5230 | 5.9055 150.000 | 10.6299 270.000 | 10.6339 270.101 | 3.5000 88.900 | | | | | | | 185000 825000 | 292000 1300000 | | | | |
| 1330 | 5.9055 150.000 | 12.5984 320.000 | 12.6032 320.121 | 2.5591 65.000 | | | | | | | | | | | | |
| 7330 | 5.9055 150.000 | 12.5984 320.000 | 12.6032 320.121 | 3.4252 87.000 | | | | | | | | | | | | |
| 5330 | 5.9055 150.000 | 12.5984 320.000 | 12.6032 320.121 | 4.8750 123.825 | | | | | | | | | | | | |
| 1932 | 6.2992 160.000 | 8.6614 220.000 | 8.6649 220.088 | 1.1024 28.000 | | | | | | | | | | | | |
| 1032 | 6.2992 160.000 | 9.4488 240.000 | 9.4526 240.096 | 1.4961 38.000 | | | | | | | | | | | | |
| 1232 | 6.2992 160.000 | 11.4173 290.000 | 11.4216 290.109 | 1.8898 48.000 | | | | | | | | | | | | |
| 5232 | 6.2992 160.000 | 11.4173 290.000 | 11.4216 290.109 | 3.8750 98.425 | | | | | | | | | | | | |
| 1332 | 6.2992 160.000 | 13.3858 340.000 | 13.3906 340.121 | 2.6772 68.000 | | | | | | | | | | | | |
| 7332 | 6.2992 160.000 | 13.3858 340.000 | 13.3906 340.121 | 3.5433 90.000 | | | | | | | | | | | | |
| 5332 | 6.2992 160.000 | 13.3858 340.000 | 13.3906 340.121 | 5.2500 133.350 | | | | | | | | | | | | |
| 1934 | 6.6929 170.000 | 9.0551 230.000 | 9.0587 230.091 | 1.1024 28.000 | | | 43000 191000 | 73000 325000 | | | | | | | | |
| 1034 | 6.6929 170.000 | 10.2362 260.000 | 10.2402 260.101 | 1.6535 42.000 | | | | | | | | | | | | |

* Oversize outer ring for heavy press fit in standard housing bore.

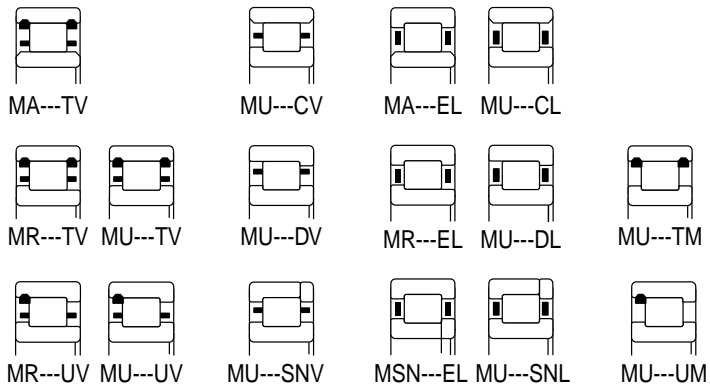
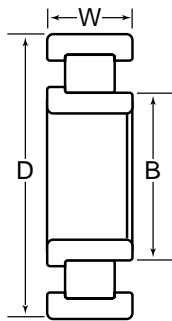
Dimensions and Ratings



| Basic Bearing Number | A | C | F | H | R | r | U | V | X | Z | Basic Bearing Number |
|----------------------|-----------------|------------------|---------------------|---------------------|-------------------------|---------------|---------------------------------|---------------|-----------------------------------|----------------|----------------------|
| | Inner Ring O.D. | Outer Ring I.D. | Inner Ring Rib O.D. | Outer Ring Rib O.D. | Maximum * Fillet Radius | | Minimum Shaft Shoulder Diameter | | Maximum Housing Shoulder Diameter | | |
| | | | | | Shaft | Housing | Plain Rings | Rib Rings | Plain Rings | Rib Rings | |
| | Inch/mm | | | | | | | | | | |
| 7328 | 7.153 181.69 | 10.161 258.09 | 7.755 196.98 | 9.620 244.35 | 0.312 7.92 | 0.125 3.18 | 6.77 172.0 | 7.15 181.6 | 10.68 271.3 | 10.16 258.1 | 7328 |
| 5328 | 7.153 181.69 | 10.161 258.09 | 7.755 196.98 | 9.620 244.35 | 0.312 7.92 | 0.125 3.18 | 6.77 172.0 | 7.15 181.6 | 10.68 271.3 | 10.16 258.1 | 5328 |
| 1930 | 6.510 165.35 | 7.669 194.79 | 6.741 171.22 | 7.438 188.93 | 0.125 3.18 | 0.080 2.03 | 6.36 161.5 | 6.51 165.4 | 7.84 199.1 | 7.66 194.6 | 1930 |
| 1030 | 6.641 168.68 | 8.128 206.45 | 6.937 176.20 | 7.832 198.93 | 0.156 3.96 | 0.080 2.03 | 6.47 164.3 | 6.64 168.7 | 8.36 212.3 | 8.12 206.2 | 1030 |
| 1230 | 7.147 181.53 | 9.522 241.86 | 7.600 193.04 | 9.095 231.01 | 0.250 6.35 | 0.100 2.54 | 6.86 174.2 | 7.14 181.4 | 9.88 251.0 | 9.52 241.8 | 1230 |
| 5230 | 7.147 181.53 | 9.522 241.86 | 7.600 193.04 | 9.095 231.01 | 0.250 6.35 | 0.100 2.54 | 6.86 174.2 | 7.14 181.4 | 9.88 251.0 | 9.52 241.8 | 5230 |
| 1330 | 7.516 190.91 | 10.992 279.20 | 8.210 208.53 | 10.367 263.32 | 0.312 7.92 | 0.125 3.18 | 7.13 181.1 | 7.51 190.8 | 11.50 292.1 | 10.99 279.1 | 1330 |
| 7330 | 7.516 190.91 | 10.992 279.20 | 8.210 208.53 | 10.367 263.32 | 0.312 7.92 | 0.125 3.18 | 7.13 181.1 | 7.51 190.8 | 11.50 292.1 | 10.99 279.1 | 7330 |
| 5330 | 7.516 190.91 | 10.992 279.20 | 8.210 208.53 | 10.367 263.32 | 0.312 7.92 | 0.125 3.18 | 7.13 181.1 | 7.51 190.8 | 11.50 292.1 | 10.99 279.1 | 5330 |
| 1932 | 6.905 175.39 | 8.064 204.83 | 7.136 181.25 | 7.833 198.96 | 0.125 3.18 | 0.080 2.03 | 6.76 171.7 | 6.90 175.3 | 8.24 209.3 | 8.06 204.7 | 1932 |
| 1032 | 7.084 179.93 | 8.669 220.19 | 7.400 187.96 | 8.353 212.17 | 0.156 3.96 | 0.080 2.03 | 6.91 175.5 | 7.08 179.8 | 8.92 226.6 | 8.66 220.0 | 1032 |
| 1232 | 7.623 193.62 | 10.225 259.72 | 8.105 205.87 | 9.757 247.83 | 0.250 6.35 | 0.100 2.54 | 7.31 185.7 | 7.62 193.5 | 10.61 269.5 | 10.22 259.6 | 1232 |
| 5232 | 7.623 193.62 | 10.225 259.72 | 8.105 205.87 | 9.757 247.83 | 0.250 6.35 | 0.100 2.54 | 7.31 185.7 | 7.62 193.5 | 10.61 269.5 | 10.22 259.6 | 5232 |
| 1332 | 8.106 205.89 | 11.582 294.18 | 8.800 223.52 | 10.958 278.33 | 0.375 9.52 | 0.125 3.18 | 7.70 195.6 | 8.10 205.7 | 12.16 308.9 | 11.58 294.1 | 1332 |
| 7332 | 8.106 205.89 | 11.582 294.18 | 8.800 223.52 | 10.958 278.33 | 0.375 9.52 | 0.125 3.18 | 7.70 195.6 | 8.10 205.7 | 12.16 308.9 | 11.58 294.1 | 7332 |
| 5332 | 8.106 205.89 | 11.582 294.18 | 8.800 223.52 | 10.958 278.33 | 0.375 9.52 | 0.125 3.18 | 7.70 195.6 | 8.10 205.7 | 12.16 308.9 | 11.58 294.1 | 5332 |
| 1934 | 7.300 185.42 | 8.459 214.86 | 7.531 191.29 | 8.228 208.99 | 0.125 3.18 | 0.080 2.03 | 7.15 181.6 | 7.30 185.4 | 8.63 219.2 | 8.45 214.6 | 1934 |
| 1034 | 7.615 193.42 | 9.319 236.70 | 7.955 202.06 | 8.980 228.09 | 0.187 4.75 | 0.080 2.03 | 7.41 188.2 | 7.61 193.3 | 9.61 244.1 | 9.31 236.5 | 1034 |

* The maximum fillet on the shaft or in the housing that the bearing corner will clear.

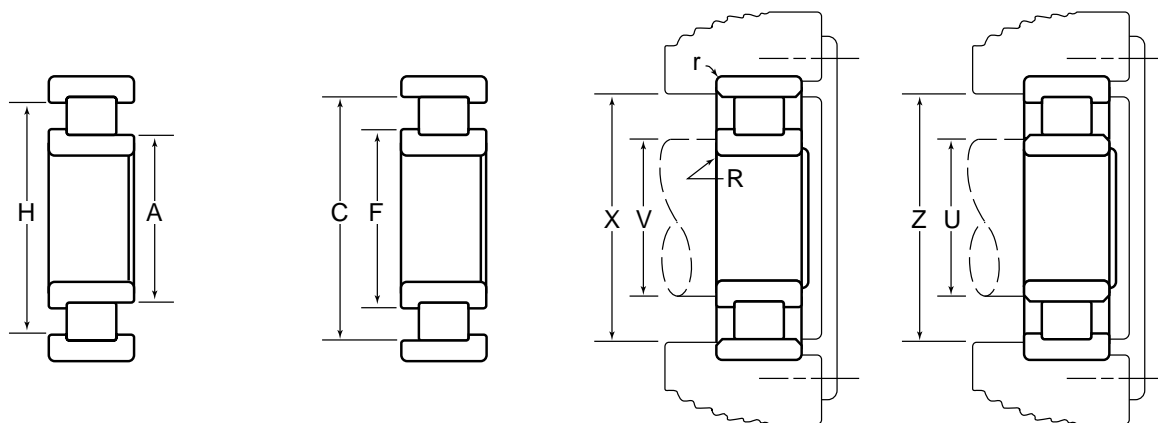
Cylindrical Roller Bearings



| Basic Bearing Number | B | D | | W | Radial Load Ratings — lbs./N | | | | | | | | | | | | | | |
|----------------------|-------------------|--------------------|--------------------|-------------------|------------------------------|---------|-----------------------|--|----------------------|--------|------------------|--------|---------------------------|--------|--|--|--|--|--|
| | | Bore Diameter | Outside Diameter | | One Piece Steel Cage | | | | Composite Steel Cage | | X Bar Steel Cage | | Full Complement (No Cage) | | | | | | |
| | Standard Style | | "A" * Style | Width | Outer Ring Assemblies | | Inner Ring Assemblies | | Dynamic | Static | Dynamic | Static | Dynamic | Static | | | | | |
| | | Dynamic | | | Static | Dynamic | Static | | | | | | | | | | | | |
| 1234 | 6.6929 170.000 | 12.2047 310.000 | 12.2091 310.111 | 2.0472 52.000 | | | | | | | | | | | | | | | |
| 5234 | 6.6929 170.000 | 12.2047 310.000 | 12.2091 310.111 | 4.1250 104.775 | | | | | | | | | | | | | | | |
| 1334 | 6.6929 170.000 | 14.1732 360.000 | 14.1781 360.124 | 2.8346 72.000 | | | | | | | | | | | | | | | |
| 7334 | 6.6929 170.000 | 14.1732 360.000 | 14.1781 360.124 | 3.7402 95.000 | | | | | | | | | | | | | | | |
| 5334 | 6.6929 170.000 | 14.1732 360.000 | 14.1781 360.124 | 5.5000 139.700 | | | | | | | | | | | | | | | |
| 1936 | 7.0866 180.000 | 9.8425 250.000 | 9.8463 250.096 | 1.2992 33.000 | | | | | | | | | | | | | | | |
| 1036 | 7.0866 180.000 | 11.0236 280.000 | 11.0276 280.101 | 1.8110 46.000 | | | | | | | | | | | | | | | |
| 1236 | 7.0866 180.000 | 12.5984 320.000 | 12.6032 320.121 | 2.0472 52.000 | | | | | | | | | | | | | | | |
| 5236 | 7.0866 180.000 | 12.5984 320.000 | 12.6032 320.121 | 4.2500 107.950 | | | | | | | | | | | | | | | |
| 1336 | 7.0866 180.000 | 14.9606 380.000 | 14.9655 380.124 | 2.9528 75.000 | | | | | | | | | | | | | | | |
| 7336 | 7.0866 180.000 | 14.9606 380.000 | 14.9655 380.124 | 3.9370 100.000 | | | | | | | | | | | | | | | |
| 5336 | 7.0866 180.000 | 14.9606 380.000 | 14.9655 380.124 | 5.7500 146.050 | | | | | | | | | | | | | | | |
| 1938 | 7.4803 190.000 | 10.2362 260.000 | 10.2402 260.101 | 1.2992 33.000 | | | | | | | | | | | | | | | |
| 1038 | 7.4803 190.000 | 11.4173 290.000 | 11.4216 290.109 | 1.8110 46.000 | | | | | | | | | | | | | | | |
| 1238 | 7.4803 190.000 | 13.3858 340.000 | 13.3906 340.121 | 2.1654 55.000 | | | | | | | | | | | | | | | |
| 5238 | 7.4803 190.000 | 13.3858 340.000 | 13.3906 340.121 | 4.5000 114.300 | | | | | | | | | | | | | | | |
| 1338 | 7.4803 190.000 | 15.7480 400.000 | 15.7529 400.124 | 3.0709 78.000 | | | | | | | | | | | | | | | |
| 7338 | 7.4803 190.000 | 15.7480 400.000 | 15.7529 400.124 | 4.1339 105.000 | | | | | | | | | | | | | | | |

* Oversize outer ring for heavy press fit in standard housing bore.

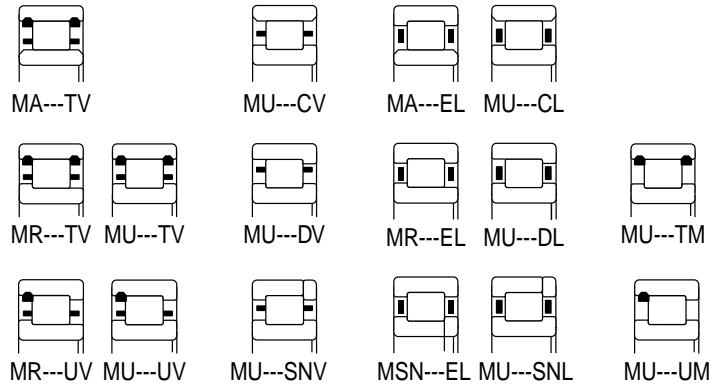
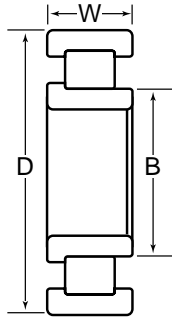
Dimensions and Ratings



| Basic Bearing Number | A | C | F | H | R | r | U | V | X | Z | Basic Bearing Number |
|----------------------|-----------------|------------------|---------------------|---------------------|-------------------------|---------------|---------------------------------|---------------|-----------------------------------|----------------|----------------------|
| | Inner Ring O.D. | Outer Ring I.D. | Inner Ring Rib O.D. | Outer Ring Rib O.D. | Maximum * Fillet Radius | | Minimum Shaft Shoulder Diameter | | Maximum Housing Shoulder Diameter | | |
| | | | | | Shaft | Housing | Plain Rings | Rib Rings | Plain Rings | Rib Rings | |
| | Inch/mm | | | | | | | | | | |
| 1234 | 8.090 205.49 | 10.934 277.72 | 8.625 219.08 | 10.423 264.74 | 0.250 6.35 | 0.125 3.18 | 7.76 197.1 | 8.09 205.5 | 11.32 287.5 | 10.93 227.6 | 1234 |
| 5234 | 8.090 205.49 | 10.934 277.72 | 8.625 219.08 | 10.423 264.74 | 0.250 6.35 | 0.125 3.18 | 7.76 197.1 | 8.09 205.5 | 11.32 287.5 | 10.93 227.6 | 5234 |
| 1334 | 8.532 216.71 | 12.338 313.39 | 9.290 235.97 | 11.654 296.01 | 0.375 9.52 | 0.125 3.18 | 8.12 206.2 | 8.53 216.7 | 12.93 328.4 | 12.33 313.2 | 1334 |
| 7334 | 8.532 216.71 | 12.338 313.39 | 9.290 235.97 | 11.654 296.01 | 0.375 9.52 | 0.125 3.18 | 8.12 206.2 | 8.53 216.7 | 12.93 328.4 | 12.33 313.2 | 7334 |
| 5334 | 8.532 216.71 | 12.338 313.39 | 9.290 235.97 | 11.654 296.01 | 0.375 9.52 | 0.125 3.18 | 8.12 206.2 | 8.53 216.7 | 12.93 328.4 | 12.33 313.2 | 5334 |
| 1936 | 7.780 197.61 | 9.159 232.64 | 8.055 204.60 | 8.885 225.68 | 0.156 3.96 | 0.080 2.03 | 7.60 193.0 | 7.78 197.6 | 9.38 238.3 | 9.15 232.4 | 1936 |
| 1036 | 8.094 205.59 | 10.022 254.56 | 8.478 215.34 | 9.638 244.81 | 0.187 4.75 | 0.080 2.03 | 7.86 199.6 | 8.09 205.5 | 10.35 262.9 | 10.02 254.5 | 1036 |
| 1236 | 8.515 216.28 | 11.360 288.54 | 9.050 229.87 | 10.849 275.56 | 0.250 6.35 | 0.125 3.18 | 8.17 207.5 | 8.51 216.2 | 11.74 298.2 | 11.36 288.5 | 1236 |
| 5236 | 8.515 216.28 | 11.360 288.54 | 9.050 229.87 | 10.849 275.56 | 0.250 6.35 | 0.125 3.18 | 8.17 207.5 | 8.51 216.2 | 11.74 298.2 | 11.36 288.5 | 5236 |
| 1336 | 9.123 231.72 | 12.930 328.42 | 9.885 251.08 | 12.246 311.05 | 0.375 9.52 | 0.125 3.18 | 8.63 219.2 | 9.12 231.6 | 13.60 345.4 | 12.93 328.4 | 1336 |
| 7336 | 9.123 231.72 | 12.930 328.42 | 9.885 251.08 | 12.246 311.05 | 0.375 9.52 | 0.125 3.18 | 8.63 219.2 | 9.12 231.6 | 13.60 345.4 | 12.93 328.4 | 7336 |
| 5336 | 9.123 231.72 | 12.930 328.42 | 9.885 251.08 | 12.246 311.05 | 0.375 9.52 | 0.125 3.18 | 8.63 219.2 | 9.12 231.6 | 13.60 345.4 | 12.93 328.4 | 5336 |
| 1938 | 8.178 207.72 | 9.558 242.77 | 9.453 214.71 | 9.283 235.79 | 0.156 3.96 | 0.080 2.03 | 7.99 202.9 | 8.17 207.5 | 9.78 248.4 | 9.55 242.6 | 1938 |
| 1038 | 8.488 215.60 | 10.416 264.57 | 8.872 225.35 | 10.032 254.81 | 0.187 4.75 | 0.080 2.03 | 8.25 209.6 | 8.48 215.4 | 10.74 272.8 | 10.41 264.4 | 1038 |
| 1238 | 9.013 228.93 | 12.023 305.38 | 9.580 243.33 | 11.482 291.64 | 0.312 7.92 | 0.125 3.18 | 8.67 220.2 | 9.01 228.9 | 12.46 316.5 | 12.02 305.3 | 1238 |
| 5238 | 9.013 228.93 | 12.023 305.38 | 9.580 243.33 | 11.482 291.64 | 0.312 7.92 | 0.125 3.18 | 8.67 220.2 | 9.01 228.9 | 12.46 316.5 | 12.02 305.3 | 5238 |
| 1338 | 9.534 242.16 | 13.699 347.95 | 10.365 263.27 | 12.951 328.96 | 0.375 9.52 | 0.156 3.96 | 9.04 229.6 | 9.53 242.1 | 14.07 357.4 | 13.69 347.7 | 1338 |
| 7338 | 9.534 242.16 | 13.699 347.95 | 10.365 263.27 | 12.951 328.96 | 0.375 9.52 | 0.156 3.96 | 9.04 229.6 | 9.53 242.1 | 14.07 357.4 | 13.69 347.7 | 7338 |

* The maximum fillet on the shaft or in the housing that the bearing corner will clear.

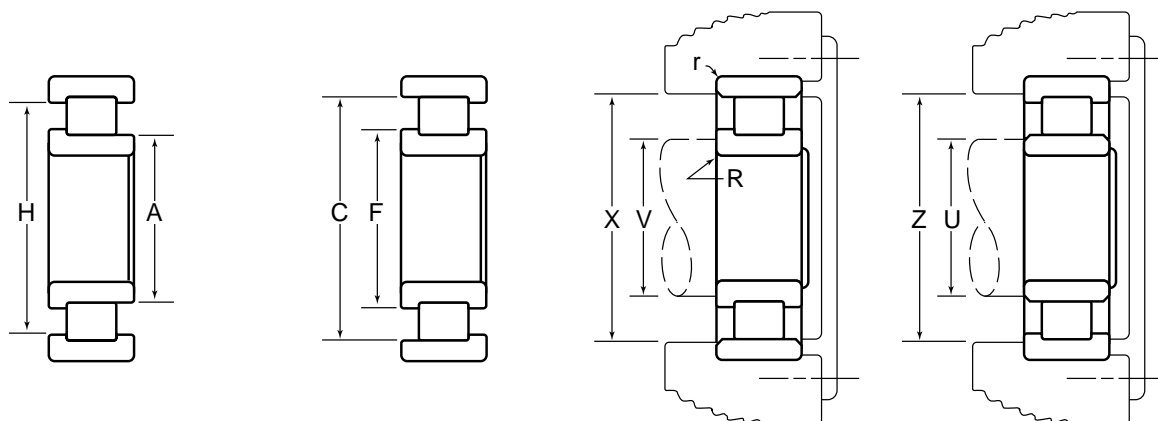
Cylindrical Roller Bearings



| Basic Bearing Number | B | | D | | W | Radial Load Ratings — lbs./N | | | | | | | | | |
|----------------------|---------------|------------------|-------------|---------|-----------------------|------------------------------|-----------------------|---------|----------------------|---------|------------------|---------|---------------------------|---------|---------|
| | Bore Diameter | Outside Diameter | | Width | One Piece Steel Cage | | | | Composite Steel Cage | | X Bar Steel Cage | | Full Complement (No Cage) | | |
| | | Standard Style | "A" * Style | | Outer Ring Assemblies | | Inner Ring Assemblies | | Dynamic | Static | Dynamic | Static | Dynamic | Static | Dynamic |
| | Inch/mm | | | | | Dynamic | Static | Dynamic | Static | Dynamic | Static | Dynamic | Static | Dynamic | Static |
| 5338 | 7.4803 | 15.7480 | 15.7529 | 6.0000 | | | | | | | | | | | |
| | 190.000 | 400.000 | 400.124 | 152.400 | | | | | | | | | | | |
| 1940 | 7.8740 | 11.0236 | 11.0276 | 1.4961 | | | | | | | | | | | |
| | 200.000 | 280.000 | 280.101 | 38.000 | | | | | | | | | | | |
| 1040 | 7.8740 | 12.2047 | 12.2091 | 2.0079 | | | | | | | | | | | |
| | 200.000 | 310.000 | 310.111 | 51.000 | | | | | | | | | | | |
| 1240 | 7.8740 | 14.1732 | 14.1781 | 2.2835 | | | | | | | | | | | |
| | 200.000 | 360.000 | 360.124 | 58.000 | | | | | | | | | | | |
| 5240 | 7.8740 | 14.1732 | 14.1781 | 4.7500 | | | | | | | | | | | |
| | 200.000 | 360.000 | 360.124 | 120.650 | | | | | | | | | | | |
| 1340 | 7.8740 | 16.5354 | 16.5406 | 3.1496 | | | | | | | | | | | |
| | 200.000 | 420.000 | 420.131 | 80.000 | | | | | | | | | | | |
| 7340 | 7.8740 | 16.5354 | 16.5406 | 4.2913 | | | | | | | | | | | |
| | 200.000 | 420.000 | 420.131 | 109.000 | | | | | | | | | | | |
| 5340 | 7.8740 | 16.5354 | 16.5406 | 6.5000 | | | | | | | | | | | |
| | 200.000 | 420.000 | 420.131 | 165.100 | | | | | | | | | | | |
| 1944 | 8.6614 | 11.8110 | 11.8154 | 1.4961 | | | | | | | | | | | |
| | 220.000 | 300.000 | 300.111 | 38.000 | | | | | | | | | | | |
| 1044 | 8.6614 | 13.3858 | 13.3906 | 2.2047 | | | | | | | | | | | |
| | 220.000 | 340.000 | 340.121 | 56.000 | | | | | | | | | | | |
| 1244 | 8.6614 | 15.7480 | 15.7529 | 2.5591 | | | | | | | | | | | |
| | 220.000 | 400.000 | 400.124 | 65.000 | | | | | | | | | | | |
| 5244 | 8.6614 | 15.7480 | 15.7529 | 5.2500 | | | | | | | | | | | |
| | 220.000 | 400.000 | 400.124 | 133.350 | | | | | | | | | | | |
| 1948 | 9.4488 | 12.5984 | 12.6032 | 1.4961 | | | | | | | | | | | |
| | 240.000 | 320.000 | 320.121 | 38.000 | | | | | | | | | | | |
| 1048 | 9.4488 | 14.1732 | 14.1781 | 2.2047 | | | | | | | | | | | |
| | 240.000 | 360.000 | 360.124 | 56.000 | | | | | | | | | | | |
| 1248 | 9.4488 | 17.3228 | 17.3280 | 2.8346 | | | | | | | | | | | |
| | 240.000 | 440.000 | 440.131 | 72.000 | | | | | | | | | | | |
| 5248 | 9.4488 | 17.3228 | 17.3280 | 5.7500 | | | | | | | | | | | |
| | 240.000 | 440.000 | 440.131 | 146.050 | | | | | | | | | | | |
| 1952 | 10.2362 | 14.1732 | 14.1781 | 1.8110 | | | | | | | | | | | |
| | 260.000 | 360.000 | 360.124 | 46.000 | | | | | | | | | | | |
| 1052 | 10.2362 | 15.7480 | 15.7529 | 2.5591 | | | | | | | | | | | |
| | 260.000 | 400.000 | 400.124 | 65.000 | | | | | | | | | | | |

* Oversize outer ring for heavy press fit in standard housing bore.

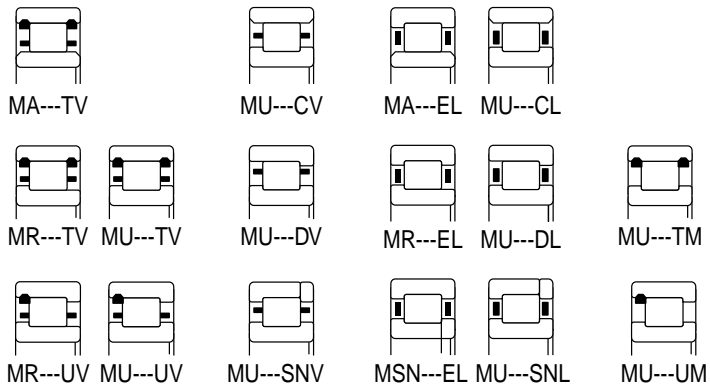
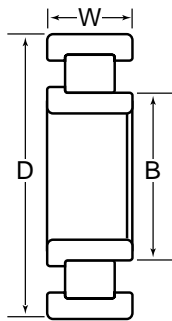
Dimensions and Ratings



| Basic Bearing Number | A | C | F | H | R | r | U | V | X | Z | Basic Bearing Number |
|----------------------|------------------|------------------|---------------------|---------------------|-------------------------|---------------|---------------------------------|----------------|-----------------------------------|----------------|----------------------|
| | Inner Ring O.D. | Outer Ring I.D. | Inner Ring Rib O.D. | Outer Ring Rib O.D. | Maximum * Fillet Radius | | Minimum Shaft Shoulder Diameter | | Maximum Housing Shoulder Diameter | | |
| | | | | | Shaft | Housing | Plain Rings | Rib Rings | Plain Rings | Rib Rings | |
| | | | | | Inch/mm | | | | | | |
| 5338 | 9.534 242.16 | 13.699 347.95 | 10.365 263.27 | 12.951 328.96 | 0.375 9.52 | 0.156 3.96 | 9.04 229.6 | 9.53 242.1 | 14.07 357.4 | 13.69 347.7 | 5338 |
| 1940 | 8.660 219.96 | 10.246 260.25 | 8.976 227.99 | 9.930 252.22 | 0.187 4.75 | 0.080 2.03 | 8.48 215.4 | 8.66 220.0 | 10.49 266.4 | 10.24 260.1 | 1940 |
| 1040 | 8.964 227.69 | 11.122 282.50 | 9.394 238.61 | 10.692 271.58 | 0.187 4.75 | 0.080 2.03 | 8.70 221.0 | 8.96 227.6 | 11.47 291.3 | 11.12 282.4 | 1040 |
| 1240 | 9.535 242.19 | 12.703 322.66 | 10.135 257.43 | 12.134 308.20 | 0.312 7.92 | 0.125 3.18 | 9.15 232.4 | 9.53 242.1 | 13.17 334.5 | 12.70 322.6 | 1240 |
| 5240 | 9.535 242.19 | 12.703 322.66 | 10.135 257.43 | 12.134 308.20 | 0.312 7.92 | 0.125 3.18 | 9.15 232.4 | 9.53 242.1 | 13.17 334.5 | 12.70 322.6 | 5240 |
| 1340 | 10.125 257.18 | 14.290 362.97 | 10.955 278.26 | 13.542 343.97 | 0.375 9.52 | 0.156 3.96 | 9.57 243.1 | 10.12 257.0 | 14.72 373.9 | 14.29 363.0 | 1340 |
| 7340 | 10.125 257.18 | 14.290 362.97 | 10.955 278.26 | 13.542 343.97 | 0.375 9.52 | 0.156 3.96 | 9.57 243.1 | 10.12 257.0 | 14.72 373.9 | 14.29 363.0 | 7340 |
| 5340 | 10.125 257.18 | 14.290 362.97 | 10.955 278.26 | 13.542 343.97 | 0.375 9.52 | 0.156 3.96 | 9.57 243.1 | 10.12 257.0 | 14.72 373.9 | 14.29 363.0 | 5340 |
| 1944 | 9.450 240.03 | 11.037 280.34 | 9.766 248.06 | 10.721 272.31 | 0.187 4.75 | 0.080 2.03 | 9.27 235.5 | 9.45 240.0 | 11.28 286.5 | 11.03 280.2 | 1944 |
| 1044 | 9.898 251.41 | 12.156 308.76 | 10.348 262.84 | 11.706 297.33 | 0.250 6.35 | 0.100 2.54 | 9.62 244.3 | 9.89 251.2 | 12.55 318.8 | 12.15 308.6 | 1044 |
| 1244 | 10.469 265.91 | 14.138 359.11 | 11.201 284.51 | 13.479 342.37 | 0.375 9.52 | 0.125 3.18 | 10.08 256.0 | 10.46 265.7 | 14.65 372.1 | 14.13 358.9 | 1244 |
| 5244 | 10.469 265.91 | 14.138 359.11 | 11.201 284.51 | 13.479 342.37 | 0.375 9.52 | 0.125 3.18 | 10.08 256.0 | 10.46 265.7 | 14.65 372.1 | 14.13 358.9 | 5244 |
| 1948 | 10.236 259.99 | 11.823 300.30 | 10.552 268.02 | 11.508 292.30 | 0.187 4.75 | 0.080 2.03 | 10.05 255.3 | 10.23 259.8 | 12.07 306.6 | 11.82 300.2 | 1948 |
| 1048 | 10.685 271.40 | 12.944 328.78 | 11.135 282.83 | 12.494 317.35 | 0.250 6.35 | 0.100 2.54 | 10.40 264.2 | 10.68 271.3 | 13.37 339.6 | 12.94 328.7 | 1048 |
| 1248 | 11.464 291.19 | 15.482 393.24 | 12.266 311.56 | 14.760 374.90 | 0.375 9.52 | 0.125 3.18 | 11.00 279.4 | 11.46 291.1 | 16.08 408.4 | 15.48 393.2 | 1248 |
| 5248 | 11.464 291.19 | 15.482 393.24 | 12.266 311.56 | 14.760 374.90 | 0.375 9.52 | 0.125 3.18 | 11.00 279.4 | 11.46 291.1 | 16.08 408.4 | 15.48 393.2 | 5248 |
| 1952 | 11.250 285.75 | 13.180 334.77 | 11.634 295.50 | 12.796 325.02 | 0.281 7.14 | 0.080 2.03 | 11.01 279.7 | 11.25 285.8 | 13.50 342.9 | 13.18 334.8 | 1952 |
| 1052 | 11.651 295.94 | 14.341 364.26 | 12.187 309.55 | 13.806 350.67 | 0.312 7.92 | 0.125 3.18 | 11.35 288.3 | 11.65 295.9 | 14.82 376.4 | 14.34 364.2 | 1052 |

* The maximum fillet on the shaft or in the housing that the bearing corner will clear.

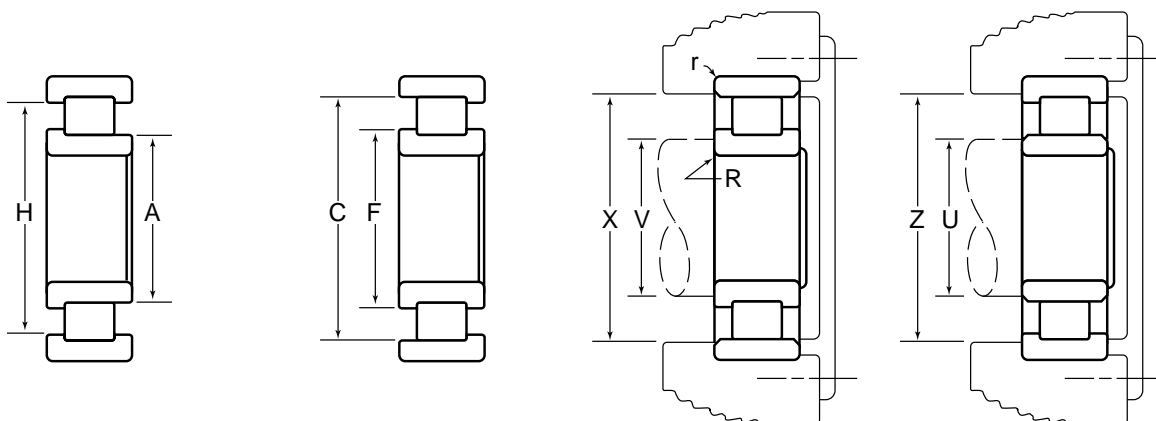
Cylindrical Roller Bearings



| Basic Bearing Number | Dimensions | | | Radial Load Ratings — lbs./N | | | | | | | | | | | |
|----------------------|--------------------|--------------------|--------------------|------------------------------|-----------------------|-----------------------|------------------|-------------------|----------------------|---------|------------------|---------|---------------------------|---------|--------|
| | B | D | | W | One Piece Steel Cage | | | | Composite Steel Cage | | X Bar Steel Cage | | Full Complement (No Cage) | | |
| | Bore Diameter | Outside Diameter | | | Outer Ring Assemblies | Inner Ring Assemblies | | Dynamic | Static | Dynamic | Static | Dynamic | Static | Dynamic | Static |
| | | Standard Style | "A" * Style | | | Dynamic | Static | | | | | | | | |
| Inch/mm | | | | Dynamic | Static | Dynamic | Static | Dynamic | Static | Dynamic | Static | Dynamic | Static | | |
| 1252 | 10.2362 260.000 | 18.8976 480.000 | 18.9029 480.134 | 3.1496 80.000 | | | | | | | | | | | |
| 5252 | 10.2362 260.000 | 18.8976 480.000 | 18.9029 480.134 | 6.2500 158.750 | | | | | | | | | | | |
| 1956 | 11.0236 280.000 | 14.9606 380.000 | 14.9655 380.124 | 1.8110 46.000 | | | 129000 575000 | 230000 1020000 | | | | | | | |
| 1056 | 11.0236 280.000 | 16.5354 420.000 | 16.5406 420.131 | 2.5591 65.000 | | | | | | | | | | | |
| 1256 | 11.0236 280.000 | 19.6850 500.000 | 19.6903 500.134 | 3.1496 80.000 | | | | | | | | | | | |
| 5256 | 11.0236 280.000 | 19.6850 500.000 | 19.6903 500.134 | 6.5000 165.100 | | | | | | | | | | | |
| 1960 | 11.8110 300.000 | 16.5354 420.000 | 16.5406 420.131 | 2.2047 56.000 | | | | | | | | | | | |
| 1964 | 12.5984 320.000 | 17.3228 440.000 | 17.3280 440.131 | 2.2047 56.000 | | | | | | | | | | | |

* Oversize outer ring for heavy press fit in standard housing bore.

Dimensions and Ratings



| Basic Bearing Number | A | C | F | H | R | r | U | V | X | Z | Basic Bearing Number |
|----------------------|------------------|------------------|---------------------|---------------------|-------------------------|---------------|---------------------------------|----------------|-----------------------------------|----------------|----------------------|
| | Inner Ring O.D. | Outer Ring I.D. | Inner Ring Rib O.D. | Outer Ring Rib O.D. | Maximum * Fillet Radius | | Minimum Shaft Shoulder Diameter | | Maximum Housing Shoulder Diameter | | |
| | | | | | Shaft | Housing | Plain Rings | Rib Rings | Plain Rings | Rib Rings | |
| | | | | | Inch/mm | | | | | | |
| 1252 | 12.543 318.59 | 16.928 429.97 | 13.419 340.84 | 16.140 409.96 | 0.375 9.52 | 0.156 3.96 | 11.97 304.0 | 12.54 318.5 | 17.56 446.0 | 16.92 429.8 | 1252 |
| 5252 | 12.543 318.59 | 16.928 429.97 | 13.419 340.84 | 16.140 409.96 | 0.375 9.52 | 0.156 3.96 | 11.97 304.0 | 12.54 318.5 | 17.56 446.0 | 16.92 429.8 | 5252 |
| 1956 | 12.040 305.82 | 13.970 354.84 | 12.424 315.57 | 13.586 345.08 | 0.281 7.14 | 0.080 2.03 | 11.80 299.7 | 12.04 305.8 | 14.29 363.0 | 13.97 354.8 | 1956 |
| 1056 | 12.438 315.93 | 15.129 384.28 | 12.974 329.54 | 14.593 370.66 | 0.312 7.92 | 0.125 3.18 | 12.14 308.4 | 12.43 315.7 | 15.61 396.5 | 15.12 384.0 | 1056 |
| 1256 | 13.203 335.36 | 17.589 446.76 | 14.079 357.61 | 16.801 426.75 | 0.375 9.52 | 0.156 3.96 | 12.67 321.8 | 13.20 335.3 | 18.26 463.8 | 17.58 446.5 | 1256 |
| 5256 | 13.203 335.36 | 17.589 446.76 | 14.079 357.61 | 16.801 426.75 | 0.375 9.52 | 0.156 3.96 | 12.67 321.8 | 13.20 335.3 | 18.26 463.8 | 17.58 446.5 | 5256 |
| 1960 | 13.050 331.47 | 15.310 388.87 | 13.500 342.90 | 14.861 377.47 | 0.312 7.92 | 0.100 2.54 | 12.77 324.4 | 13.05 331.5 | 15.72 399.3 | 15.31 388.9 | 1960 |
| 1964 | 13.840 351.54 | 16.101 408.97 | 14.290 362.97 | 15.652 397.56 | 0.312 7.92 | 0.100 2.54 | 13.56 344.4 | 13.84 351.5 | 16.51 419.4 | 16.10 408.9 | 1964 |

* The maximum fillet on the shaft or in the housing that the bearing corner will clear.