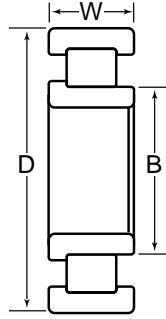


Max-Pak Cylindrical Roller Bearings

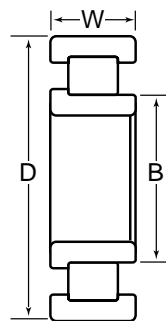
**MAX-PAK
(Maximum Capacity)
W60000 Series**



Basic Bearing Number	B	D		W	Radial Load Ratings — lbs./N									
		Bore Diameter	Outside Diameter		One Piece Steel Cage				Composite Steel Cage		X Bar Steel Cage		Full Complement (No Cage)	
	Standard Style		"A" * Style	Width	Outer Ring Assemblies		Inner Ring Assemblies		Dynamic	Static	Dynamic	Static	Dynamic	Static
	Inch/mm				Dynamic	Static	Dynamic	Static						
61007	1.3780 35.000		2.4421 62.029	0.5512 14.000										
61207	1.3780 35.000		2.8359 72.032	0.6693 17.000										
67207	1.3780 35.000		2.8359 72.032	0.7480 19.000										
61307	1.3780 35.000		3.1510 80.035	0.8268 21.000										
67307	1.3780 35.000		3.1510 80.035	1.0236 26.000										
61008	1.5748 40.000		2.6785 68.034	0.5906 15.000										
61208	1.5748 40.000		3.1510 80.035	0.7087 18.000										
67208	1.5748 40.000		3.1510 80.035	0.8268 21.000										
61308	1.5748 40.000		3.5449 90.040	0.9055 23.000										
67308	1.5748 40.000		3.5449 90.040	1.1811 30.000										
61009	1.7717 45.000		2.9542 75.037	0.6299 16.000										
61209	1.7717 45.000		3.3480 85.039	0.7480 19.000						14700 65500	15300 68000			
67209	1.7717 45.000		3.3480 85.039	0.9055 23.000										
61309	1.7717 45.000		3.9388 100.046	0.9843 25.000										
67309	1.7717 45.000		3.9388 100.046	1.2205 31.000										
61010	1.9685 50.000		3.1510 80.035	0.6299 16.000										
61210	1.9685 50.000		3.5449 90.040	0.7874 20.000										
67210	1.9685 50.000		3.5449 90.040	0.9055 23.000										

* Oversize outer ring for heavy press fit in standard housing bore.

**MAX-PAK
(Maximum Capacity)
W60000 Series**

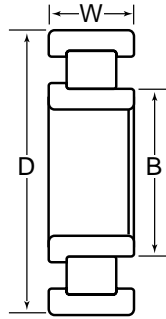


Basic Bearing Number	B	D		W	Radial Load Ratings — lbs./N									
		Outside Diameter			One Piece Steel Cage				Composite Steel Cage		X Bar Steel Cage		Full Complement (No Cage)	
	Bore Diameter	Standard Style	"A" * Style	Width	Outer Ring Assemblies		Inner Ring Assemblies		Dynamic	Static	Dynamic	Static	Dynamic	Static
		Inch/mm			Dynamic	Static	Dynamic	Static						
61310	1.9685 50.000		4.3329 110.056	1.0630 27.000										
67310	1.9685 50.000		4.3329 110.056	1.2992 33.000										
61911	2.1654 55.000		3.1510 80.035	0.5118 13.000										
61011	2.1654 55.000		3.5449 90.040	0.7087 18.000										
61211	2.1654 55.000		3.9388 100.046	0.8268 21.000										
67211	2.1654 55.000		3.9388 100.046	0.9843 25.000						41500 186000	49000 217000			
61311	2.1654 55.000		4.7266 120.056	1.1417 29.000										
67311	2.1654 55.000		4.7266 120.056	1.4173 36.000						42500 189000	47500 212000			
61912	2.3622 60.000		3.3480 85.039	0.5118 13.000										
61012	2.3622 60.000		3.7419 95.044	0.7087 18.000										
61212	2.3622 60.000		4.3329 110.056	0.8661 22.000										
67212	2.3622 60.000		4.3329 110.056	1.0630 27.000										
65212	2.3622 60.000		4.3329 110.056	1.4375 36.512			39000 174000	50000 222000						
61312	2.3622 60.000		5.1204 130.058	1.2205 31.000						37000 164000	37500 167000			
67312	2.3622 60.000		5.1204 130.058	1.4961 38.000										
61913	2.5591 65.000		3.5449 90.040	0.5118 13.000										
61013	2.5591 65.000		3.9388 100.046	0.7087 18.000										
61213	2.5591 65.000		4.7266 120.056	0.9055 23.000			25400 113000	27900 124000						

* Oversize outer ring for heavy press fit in standard housing bore.

Max-Pak Cylindrical Roller Bearings

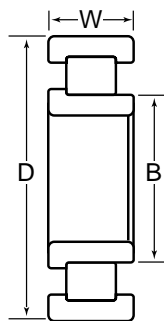
**MAX-PAK
(Maximum Capacity)
W60000 Series**



Basic Bearing Number	B	D		W	Radial Load Ratings — lbs./N											
		Bore Diameter	Outside Diameter		One Piece Steel Cage				Composite Steel Cage		X Bar Steel Cage		Full Complement (No Cage)			
	Standard Style		"A" * Style	Width	Outer Ring Assemblies		Inner Ring Assemblies		Dynamic	Static	Dynamic	Static	Dynamic	Static	Dynamic	Static
	Inch/mm				Dynamic	Static	Dynamic	Static								
67213	2.5591 65.000		4.7266 120.056	1.1417 29.000												
61313	2.5591 65.000		5.5141 140.058	1.2992 33.000												
67313	2.5591 65.000		5.5141 140.058	1.5748 40.000												
61914	2.7559 70.000		3.9388 100.046	0.6299 16.000												
61014	2.7559 70.000		4.3329 110.056	0.7874 20.000												
61214	2.7559 70.000		4.9236 125.059	0.9449 24.000												
67214	2.7559 70.000		4.9236 125.059	1.2205 31.000												
61314	2.7559 70.000		5.9081 150.066	1.3780 35.000							49500 219000	53000 236000				
67314	2.7559 70.000		5.9081 150.066	1.6929 43.000							62000 275000	71000 315000				
61915	2.9528 75.000		4.1358 105.049	0.6299 16.000												
61015	2.9528 75.000		4.5298 115.057	0.7874 20.000												
61215	2.9528 75.000		5.1204 130.058	0.9843 25.000												
67215	2.9528 75.000		5.1204 130.058	1.2205 31.000												
68215	2.9528 75.000		5.1204 130.058	1.4961 38.000							47000 209000	65000 289000				
61315	2.9528 75.000		6.3020 160.071	1.4567 37.000												
67315	2.9528 75.000		6.3020 160.071	1.8110 46.000							70000 310000	81000 360000				
61916	3.1496 80.000		4.3329 110.056	0.6299 16.000												
61016	3.1496 80.000		4.9236 125.059	0.8661 22.000												

* Oversize outer ring for heavy press fit in standard housing bore.

**MAX-PAK
(Maximum Capacity)
W60000 Series**

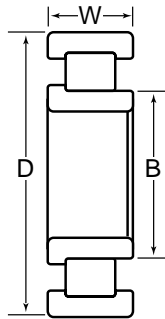


Basic Bearing Number	B	D		W	Radial Load Ratings — lbs./N										
		Outside Diameter			One Piece Steel Cage				Composite Steel Cage		X Bar Steel Cage		Full Complement (No Cage)		
	Bore Diameter	Standard Style	"A" * Style	Width	Outer Ring Assemblies		Inner Ring Assemblies		Dynamic	Static	Dynamic	Static	Dynamic	Static	
		Inch/mm			Dynamic	Static	Dynamic	Static							
61216	3.1496 80.000		5.5141 140.058	1.0236 26.000								33500 150000	40000 178000		
67216	3.1496 80.000		5.5141 140.058	1.2992 33.000											
61316	3.1496 80.000		6.6957 170.071	1.5354 39.000											
67316	3.1496 80.000		6.6957 170.071	1.9291 49.000											
61917	3.3465 85.000		4.7266 120.056	0.7087 18.000											
61017	3.3465 85.000		5.1204 130.058	0.8661 22.000											
61217	3.3465 85.000		5.9081 150.066	1.1024 28.000											
67217	3.3465 85.000		5.9081 150.066	1.3780 35.000								49500 220000	62500 279000		
61317	3.3465 85.000		7.0894 180.071	1.6142 41.000											
67317	3.3465 85.000		7.0894 180.071	2.0079 51.000											
61918	3.5433 90.000		4.9236 125.059	0.7087 18.000								17600 78000	24500 109000		
61018	3.5433 90.000		5.5141 140.058	0.9449 24.000			27800 124000	35000 156000				27800 124000	35000 156000		
61218	3.5433 90.000		6.3020 160.071	1.1811 30.000											
67218	3.5433 90.000		6.3020 160.071	1.4567 37.000	54500 241000	66000 293000						54500 241000	66000 293000		
61318	3.5433 90.000		7.4833 190.076	1.6929 43.000											
67318	3.5433 90.000		7.4833 190.076	2.1260 54.000											
61919	3.7402 95.000		5.1204 130.058	0.7087 18.000			17900 79500	25500 113000							
61019	3.7402 95.000		5.7113 145.067	0.9449 24.000								28700 128000	37000 165000		

* Oversize outer ring for heavy press fit in standard housing bore.

Max-Pak Cylindrical Roller Bearings

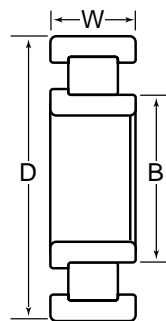
**MAX-PAK
(Maximum Capacity)
W60000 Series**



Basic Bearing Number	B	D		W	Radial Load Ratings — lbs./N											
		Bore Diameter	Outside Diameter		One Piece Steel Cage				Composite Steel Cage		X Bar Steel Cage		Full Complement (No Cage)			
	Standard Style		"A" * Style	Width	Outer Ring Assemblies		Inner Ring Assemblies		Dynamic	Static	Dynamic	Static	Dynamic	Static	Dynamic	Static
	Inch/mm				Dynamic	Static	Dynamic	Static								
61219	3.7402 95.000		6.6957 170.071	1.2598 32.000	48000 214000	57500 255000	48000 214000	57500 255000								
67219	3.7402 95.000		6.6957 170.071	1.5354 39.000												
61319	3.7402 95.000		7.8771 200.078	1.7717 45.000												
67319	3.7402 95.000		7.8771 200.078	2.2047 56.000												
61920	3.9370 100.000		5.5141 140.058	0.7874 20.000			22000 98000	31500 139000								
61020	3.9370 100.000		5.9081 150.066	0.9449 24.000												
61220	3.9370 100.000		7.0894 180.071	1.3386 34.000												
67220	3.9370 100.000		7.0894 180.071	1.6142 41.000						69500 310000	86000 385000					
68220	3.9370 100.000		7.0894 180.071	2.0866 53.000						91500 405000	123000 550000					
61320	3.9370 100.000		8.4680 215.087	1.8504 47.000												
67320	3.9370 100.000		8.4680 215.087	2.3622 60.000						122000 540000	146000 650000					
61921	4.1339 105.000		5.7113 145.067	0.7874 20.000												
61021	4.1339 105.000		6.3020 160.071	1.0236 26.000												
61221	4.1339 105.000		7.4833 190.076	1.4173 36.000												
67221	4.1339 105.000		7.4833 190.076	1.6929 43.000			76000 340000	98500 440000								
61321	4.1339 105.000		8.8618 225.090	1.9291 49.000												
67321	4.1339 105.000		8.8618 225.090	2.4803 63.000												
61922	4.3307 110.000		5.9081 150.066	0.7874 20.000												

* Oversize outer ring for heavy press fit in standard housing bore.

**MAX-PAK
(Maximum Capacity)
W60000 Series**

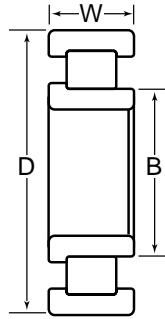


Basic Bearing Number	B		D		W		Radial Load Ratings — lbs./N							
	Bore Diameter	Standard Style	Outside Diameter		Width	One Piece Steel Cage		Composite Steel Cage		X Bar Steel Cage		Full Complement (No Cage)		
			“A” * Style	“A” * Style		Outer Ring Assemblies	Inner Ring Assemblies							
	Inch/mm					Dynamic	Static	Dynamic	Static	Dynamic	Static	Dynamic	Static	
61022	4.3307 110.000		6.6957 170.071		1.1024 28.000									
61222	4.3307 110.000		7.8771 200.078		1.4961 38.000									
67222	4.3307 110.000		7.8771 200.078		1.7717 45.000			83500 370000	105000 465000	83500 370000	105000 465000			
62222	4.3307 110.000		7.8771 200.078		2.0866 53.000					101000 450000	134000 595000			
61322	4.3307 110.000		9.4526 240.096		1.9685 50.000									
67322	4.3307 110.000		9.4526 240.096		2.5591 65.000									
61924	4.7244 120.000		6.4989 165.072		0.8661 22.000									
61024	4.7244 120.000		7.0894 180.071		1.1024 28.000									
61224	4.7244 120.000		8.4680 215.087		1.5748 40.000									
67224	4.7244 120.000		8.4680 215.087		1.8504 47.000									
68224	4.7244 120.000		8.4680 215.087		2.3622 60.000			120000 535000	169000 750000					
61324	4.7244 120.000		10.2402 260.101		2.1654 55.000									
67324	4.7244 120.000		10.2402 260.101		2.7953 71.000									
61926	5.1181 130.000		7.0894 180.071		0.9449 24.000									
61026	5.1181 130.000		7.8771 200.078		1.2992 33.000									
61226	5.1181 130.000		9.0587 230.091		1.5748 40.000									
67226	5.1181 130.000		9.0587 230.091		1.9685 50.000									
61326	5.1181 130.000		11.0276 280.101		2.2835 58.000									

* Oversize outer ring for heavy press fit in standard housing bore.

Max-Pak Cylindrical Roller Bearings

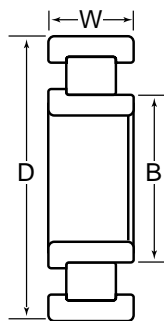
**MAX-PAK
(Maximum Capacity)
W60000 Series**



Basic Bearing Number	B	D		W	Radial Load Ratings — lbs./N										
		Bore Diameter	Outside Diameter		One Piece Steel Cage		Composite Steel Cage	X Bar Steel Cage		Full Complement (No Cage)					
	Standard Style		"A" * Style	Width	Outer Ring Assemblies			Inner Ring Assemblies		Dynamic	Static	Dynamic	Static	Dynamic	Static
	Inch/mm				Dynamic	Static	Dynamic	Static	Dynamic						
67326	5.1181 130.000		11.0276 280.101	2.9528 75.000											
61928	5.5118 140.000		7.4833 190.076	0.9449 24.000			34500 154000	52500 233000			34500 154000	52500 233000			
61028	5.5118 140.000		8.2709 210.081	1.2992 33.000											
61228	5.5118 140.000		9.8463 250.096	1.6535 42.000											
67228	5.5118 140.000		9.8463 250.096	2.1654 55.000											
61328	5.5118 140.000		11.8154 300.111	2.4409 62.000											
67328	5.5118 140.000		11.8154 300.111	3.2677 83.000											
61930	5.9055 150.000		8.2709 210.081	1.1024 28.000											
61030	5.9055 150.000		8.8618 225.090	1.3780 35.000											
61230	5.9055 150.000		10.6339 270.101	1.7717 45.000											
67230	5.9055 150.000		10.6339 270.101	2.2835 58.000											
61330	5.9055 150.000		12.6032 320.121	2.5591 65.000											
67330	5.9055 150.000		12.6032 320.121	3.4252 87.000											
61932	6.2992 160.000		8.6649 220.088	1.1024 28.000											
61032	6.2992 160.000		9.4526 240.096	1.4961 38.000											
61232	6.2992 160.000		11.4216 290.109	1.8898 48.000											
67232	6.2992 160.000		11.4216 290.109	2.4409 62.000											
61332	6.2992 160.000		13.3906 340.121	2.6772 68.000											

* Oversize outer ring for heavy press fit in standard housing bore.

**MAX-PAK
(Maximum Capacity)
W60000 Series**

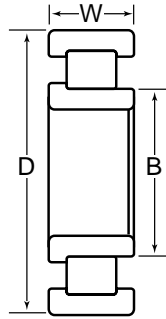


Basic Bearing Number	B	D		W	Radial Load Ratings — lbs./N									
		Outside Diameter			One Piece Steel Cage				Composite Steel Cage		X Bar Steel Cage		Full Complement (No Cage)	
	Bore Diameter	Standard Style	"A" * Style	Width	Outer Ring Assemblies		Inner Ring Assemblies		Dynamic	Static	Dynamic	Static	Dynamic	Static
		Inch/mm			Dynamic	Static	Dynamic	Static						
67332	6.2992 160.000		13.3906 340.121	3.5433 90.000										
61934	6.6929 170.000		9.0587 230.091	1.1024 28.000										
61034	6.6929 170.000		10.2402 260.101	1.6535 42.000										
61234	6.6929 170.000		12.2091 310.111	2.0472 52.000										
67234	6.6929 170.000		12.2091 310.111	2.4409 62.000										
61334	6.6929 170.000		14.1781 360.124	2.8346 72.000										
67334	6.6929 170.000		14.1781 360.124	3.7402 95.000										
61936	7.0866 180.000		9.8463 250.096	1.2992 33.000										
61036	7.0866 180.000		11.0276 280.101	1.8110 46.000			110000 490000	158000 705000						
61236	7.0866 180.000		12.6032 320.121	2.0472 52.000										
67236	7.0866 180.000		12.6032 320.121	2.5591 65.000										
61336	7.0866 180.000		14.9655 380.124	2.9528 75.000										
67336	7.0866 180.000		14.9655 380.124	3.9370 100.000										
61938	7.4803 190.000		10.2402 260.101	1.2992 33.000			67500 300000	105000 470000			67500 300000	105000 470000		
61038	7.4803 190.000		11.4216 290.109	1.8110 46.000										
61238	7.4803 190.000		13.3906 340.121	2.1654 55.000										
67238	7.4803 190.000		13.3906 340.121	2.6772 68.000										
61338	7.4803 190.000		15.7529 400.124	3.0709 78.000										

* Oversize outer ring for heavy press fit in standard housing bore.

Max-Pak Cylindrical Roller Bearings

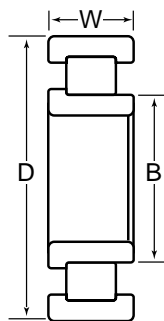
**MAX-PAK
(Maximum Capacity)
W60000 Series**



Basic Bearing Number	B	D		W	Radial Load Ratings — lbs./N																	
		Bore Diameter	Outside Diameter		One Piece Steel Cage		Composite Steel Cage	X Bar Steel Cage		Full Complement (No Cage)												
	Standard Style		"A" * Style	Width	Outer Ring Assemblies	Inner Ring Assemblies		Dynamic	Static	Dynamic	Static	Dynamic	Static									
	Inch/mm				Dynamic	Static	Dynamic							Static	Dynamic	Static						
67338	7.4803 190.000		15.7529 400.124	4.1339 105.000																		
61940	7.8740 200.000		11.0276 280.101	1.4961 38.000																		
61040	7.8740 200.000		12.2091 310.111	2.0079 51.000																		
61240	7.8740 200.000		14.1781 360.124	2.2835 58.000																		
67240	7.8740 200.000		14.1781 360.124	2.8346 72.000																		
61340	7.8740 200.000		16.5406 420.131	3.1496 80.000																		
67340	7.8740 200.000		16.5406 420.131	4.2913 109.000																		
61944	8.6614 220.000		11.8154 300.111	1.4961 38.000																		
61044	8.6614 220.000		13.3906 340.121	2.2047 56.000																		
61244	8.6614 220.000		15.7529 400.124	2.5591 65.000																		
67244	8.6614 220.000		15.7529 400.124	3.0709 78.000																		
61948	9.4488 240.000		12.6032 320.121	1.4961 38.000			89500 395000	151000 670000														
61048	9.4488 240.000		14.1781 360.124	2.2047 56.000																		
61248	9.4488 240.000		17.3280 440.131	2.8346 72.000																		
67248	9.4488 240.000		17.3280 440.131	3.3465 85.000																		
61952	10.2362 260.000		14.1781 360.124	1.8110 46.000																		
61052	10.2362 260.000		15.7529 400.124	2.5591 65.000																		
61252	10.2362 260.000		18.9029 480.134	3.1496 80.000																		

* Oversize outer ring for heavy press fit in standard housing bore.

**MAX-PAK
(Maximum Capacity)
W60000 Series**



Basic Bearing Number	B		D		W		Radial Load Ratings — lbs./N							
	Bore Diameter	Outside Diameter		Width	One Piece Steel Cage				Composite Steel Cage		X Bar Steel Cage		Full Complement (No Cage)	
		Standard Style	"A" * Style		Outer Ring Assemblies	Inner Ring Assemblies								
	Inch/mm				Dynamic	Static	Dynamic	Static	Dynamic	Static	Dynamic	Static	Dynamic	Static
67252	10.2362 260.000		18.9029 480.134	3.5433 90.000										
61956	11.0236 280.000		14.9655 380.124	1.8110 46.000										
61056	11.0236 280.000		16.5406 420.131	2.5591 65.000										
61256	11.0236 280.000		19.6903 500.134	3.1496 80.000										
67256	11.0236 280.000		19.6903 500.134	3.7402 95.000										
61960	11.8110 300.000		16.5406 420.131	2.2047 56.000										
61964	12.5984 320.000		17.3280 440.131	2.2047 56.000										

* Oversize outer ring for heavy press fit in standard housing bore.